

WHITE LAKE SUBDIVISION

SECTION 4, TOWNSHIP 3 SOUTH, RANGE 14 EAST

SUNWANEE COUNTY, FLORIDA

SHEET 2 OF 2

SITUATED IN

UNPLATTED

UNPLATTED

UNPLATTED

UNPLATTED

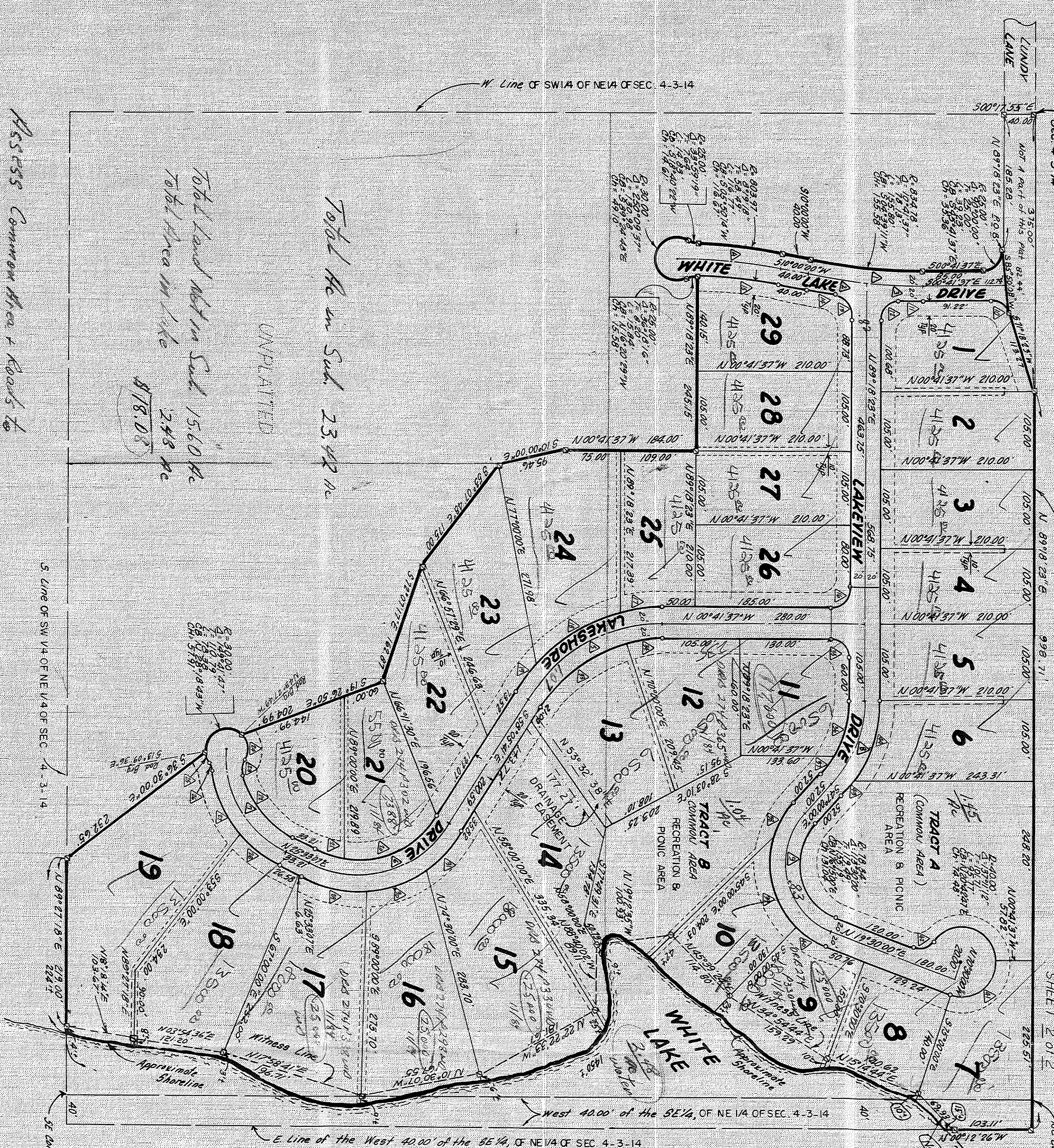
UNPLATTED

UNPLATTED

UNPLATTED

UNPLATTED

UNPLATTED



Homeowners Assoc.
Common Area Roads
Total

Common Area 2.48 ac

Roads 2.22 ac

Total 5.21 ac

Total Area in Sub. 23.48 ac

UNPLATTED

Total Land Not in Sub. 15.60 ac

Total Area in Lake 2.48 ac

878.03

11-8-84

SPLIT OUT Subdivision #DS 591 - revised TRM # 2591-00290

Road & Common Area to White Lake Sub. div. Homeowners Association

SOLD lots with front - 18000

SOLD lots No water - 6500

SOLD lots No water - 6500

UNsold lots water front - 13500

UNsold lots No water - 41250

MAF cards checked

6-14-85

LEGEND

- Permanent Reference Monument Set
- Permanent Control Point Set
- Utility Easement along lot line
- Utility Easement along DLW
- DRAINAGE EASEMENT ALONG THE LOT LINE BETWEEN LOTS 13 AND 14

NOTES

- Bearings shown hereon were prepared from eight of the points for U.S. Hwy. 90

CURVE DATA

NO.	RADIUS	DELTA	LENGTH	TANGENT	CHORD	CHORD BEARING
1	854.78	104.37	189.64	80.00	139.90	N00°39'11"E
2	854.78	57.19	79.42	39.73	74.58	N07°20'18"E
3	854.78	57.19	79.42	39.73	74.58	N07°20'18"E
4	854.78	104.37	189.64	80.00	139.90	N00°39'11"E
5	854.78	104.37	189.64	80.00	139.90	N00°39'11"E
6	854.78	104.37	189.64	80.00	139.90	N00°39'11"E
7	854.78	104.37	189.64	80.00	139.90	N00°39'11"E
8	854.78	104.37	189.64	80.00	139.90	N00°39'11"E
9	854.78	104.37	189.64	80.00	139.90	N00°39'11"E
10	854.78	104.37	189.64	80.00	139.90	N00°39'11"E
11	854.78	104.37	189.64	80.00	139.90	N00°39'11"E
12	854.78	104.37	189.64	80.00	139.90	N00°39'11"E
13	854.78	104.37	189.64	80.00	139.90	N00°39'11"E
14	854.78	104.37	189.64	80.00	139.90	N00°39'11"E
15	854.78	104.37	189.64	80.00	139.90	N00°39'11"E
16	854.78	104.37	189.64	80.00	139.90	N00°39'11"E
17	854.78	104.37	189.64	80.00	139.90	N00°39'11"E
18	854.78	104.37	189.64	80.00	139.90	N00°39'11"E
19	854.78	104.37	189.64	80.00	139.90	N00°39'11"E
20	854.78	104.37	189.64	80.00	139.90	N00°39'11"E
21	854.78	104.37	189.64	80.00	139.90	N00°39'11"E
22	854.78	104.37	189.64	80.00	139.90	N00°39'11"E
23	854.78	104.37	189.64	80.00	139.90	N00°39'11"E
24	854.78	104.37	189.64	80.00	139.90	N00°39'11"E
25	854.78	104.37	189.64	80.00	139.90	N00°39'11"E
26	854.78	104.37	189.64	80.00	139.90	N00°39'11"E
27	854.78	104.37	189.64	80.00	139.90	N00°39'11"E
28	854.78	104.37	189.64	80.00	139.90	N00°39'11"E
29	854.78	104.37	189.64	80.00	139.90	N00°39'11"E