

ADOPTION & DEDICATION

This is to certify that we, the undersigned, are the lawful owners of the lands described in the caption hereof, and that we have caused the same to be surveyed and subdivided, and this plat made in accordance with said survey is hereby adopted as the true and correct plat of said lands, and all streets, roads and other public places shown upon said plat are hereby irrevocably and without reservation, dedicated to the County of Suwannee, State of Florida, and its successors.

In witness whereof we have hereunto set our hands and seals this day of June one thousand nine hundred and forty-six.

Signed in our presence:

(Seal)
(Seal)

State of Florida,
County of Suwannee.

On this day personally appeared before me George E. Arth and his wife Dorothy E. Arth, to me well known as the persons described in and who executed the foregoing instrument, and severally acknowledged that they executed the same voluntarily for the purpose therein expressed.

In witness whereof I have hereunto affixed my hand and official seal at Live Oak, Florida, this day of June, 1946.

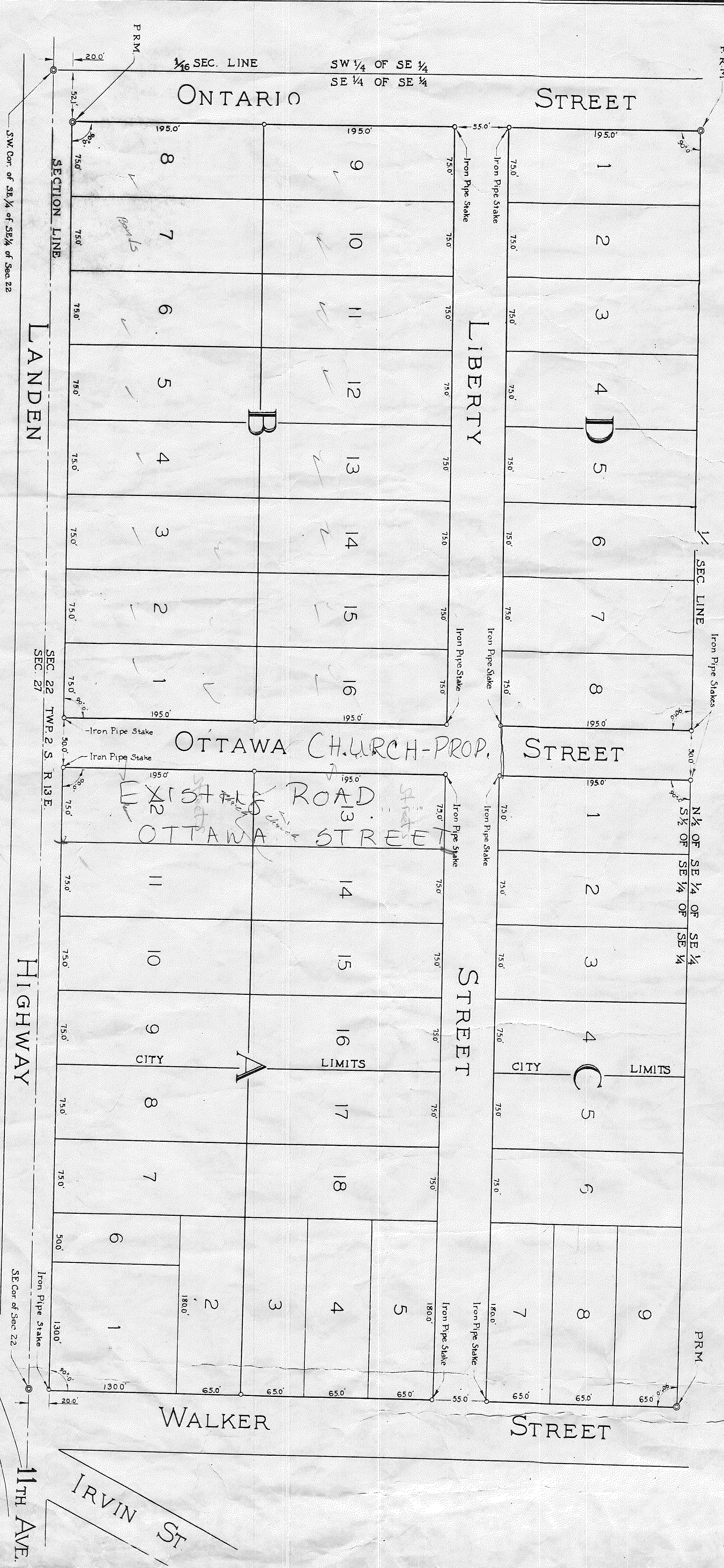
My commission expires _____
Notary Public.

I hereby certify that this Plat has been examined and approved by the County Commissioners of Suwannee County, Florida, this day AD 1946.

I hereby certify that this Plat has been examined by me and that it complies in form with all the requirements of Article 2, Title X of the Compiled General Laws of Florida, 1927; and that it has been filed for record and recorded in Plat Book No. _____ of the Public Records of Suwannee County, Florida, at _____ day of June, A.D. 1946.

Chairman
Clerk

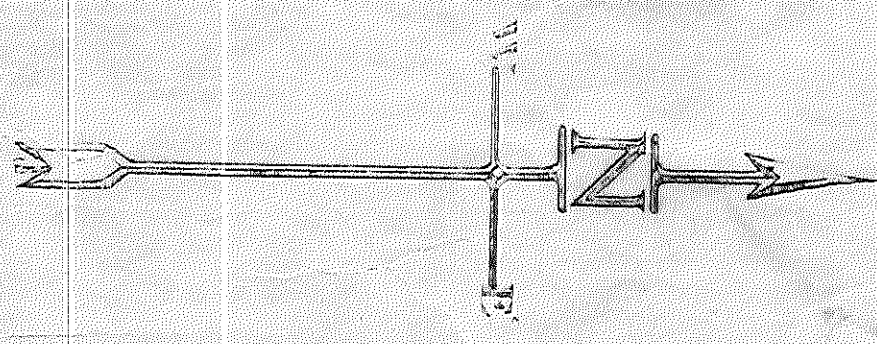
County Clerk



I hereby certify that the above plat is a correct representation of the land surveyed and described and platted hereon, and that permanent reference monuments have been placed at the boundary corners as called for under Section 3107 of the Compiled General Laws of Florida, 1927; and also that bounds, consisting of iron pipe one to one and one-half inches in diameter, have been set at all other Block corners as indicated hereon.

Live Oak, Florida, June 28, 1946.
Surveyor

WESTWOOD
SUBDIVISION
OF THE CITY OF
LIVE OAK FLORIDA
COMPRISING THE SOUTH HALF OF THE SOUTHEAST
QUARTER OF THE SOUTHEAST QUARTER OF SECTION
22, TOWNSHIP 2 SOUTH, RANGE 13 EAST.
SUWANNEE COUNTY FLORIDA



SCALE: 1 INCH = 60 FEET

PLATE 34A