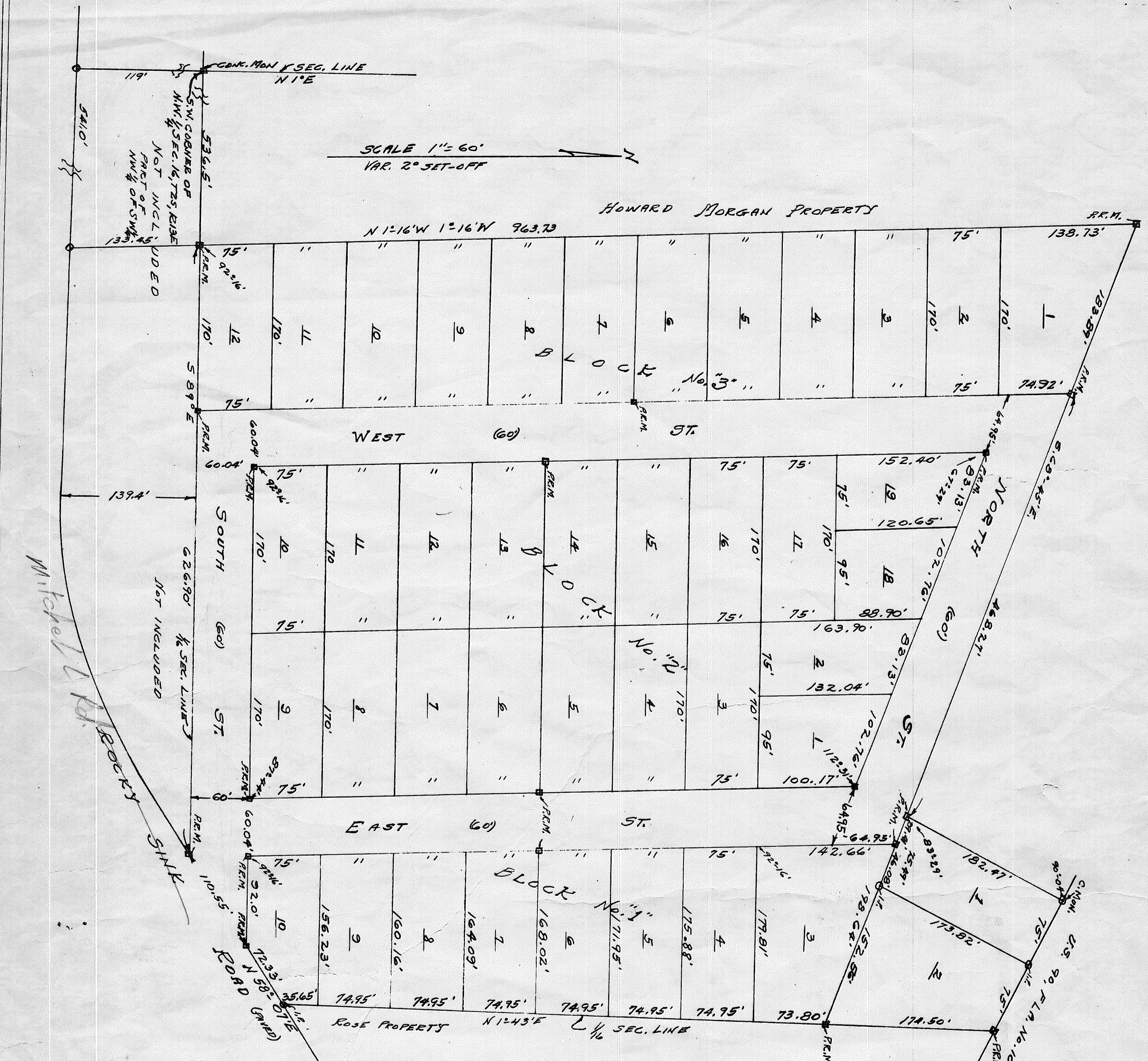


WEST OAK GARDENS ESTATES
 A PART OF SW 1/4 OF NW 1/4 OF SEC 16, T25, R13E



STATE OF FLORIDA
 COUNTY OF SUWANNEE

KNOW ALL MEN BY THESE PRESENTS:
 THAT JAMES W. WALLACE AND HIS WIFE JANELOUIE H. WALLACE, THE OWNERS OF THE LAND SHOWN HERE-ON, HAVE CAUSED SAID LAND TO BE SURVEYED AND PLATTED AND THE 60' STREETS, AS SHOWN, ARE HEREBY DEDICATED TO THE USE OF THE PUBLIC.

James W. Wallace
JaneLouie H. Wallace
 OWNERS

STATE OF FLORIDA
 COUNTY OF SUWANNEE

BEFORE ME THIS DAY HAVE PERSONALLY APPEARED JAMES W. WALLACE AND HIS WIFE, JANELOUIE H. WALLACE AND ACKNOWLEDGED THAT THEY EXECUTED THE ABOVE DECLARATION.
 WITNESS MY HAND AND SEAL THIS 2ND DAY OF April, 1962.

Charles M. Stewart
 Notary Public, State of Florida at Large
 My Commission Expires Dec. 28, 1963

STATE OF FLORIDA
 COUNTY OF SUWANNEE

APPROVED BY THE BOARD OF COUNTY COMMISSIONERS THIS 2ND DAY OF April, 1962.

Edward H. Stewart
 Chairman

George A. ...
 Clerk

STATE OF FLORIDA
 COUNTY OF SUWANNEE

ACCEPTED FOR FILE AND RECORDED IN PL. 1 PAGE 105 THIS 2ND DAY OF April, 1962.

George A. ...
 Clerk

STATE OF FLORIDA
 COUNTY OF SUWANNEE

I HEREBY CERTIFY THAT THIS IS A CORRECT REPRESENTATION OF THE LAND SURVEYED AS SHOWN HERE-ON AND THAT PERMANENT REFERENCE POINTS HAVE BEEN PLACED AS PRESCRIBED BY LAW.

John W. ...
 Reg. Surveyor - Fla. Reg. No. 897