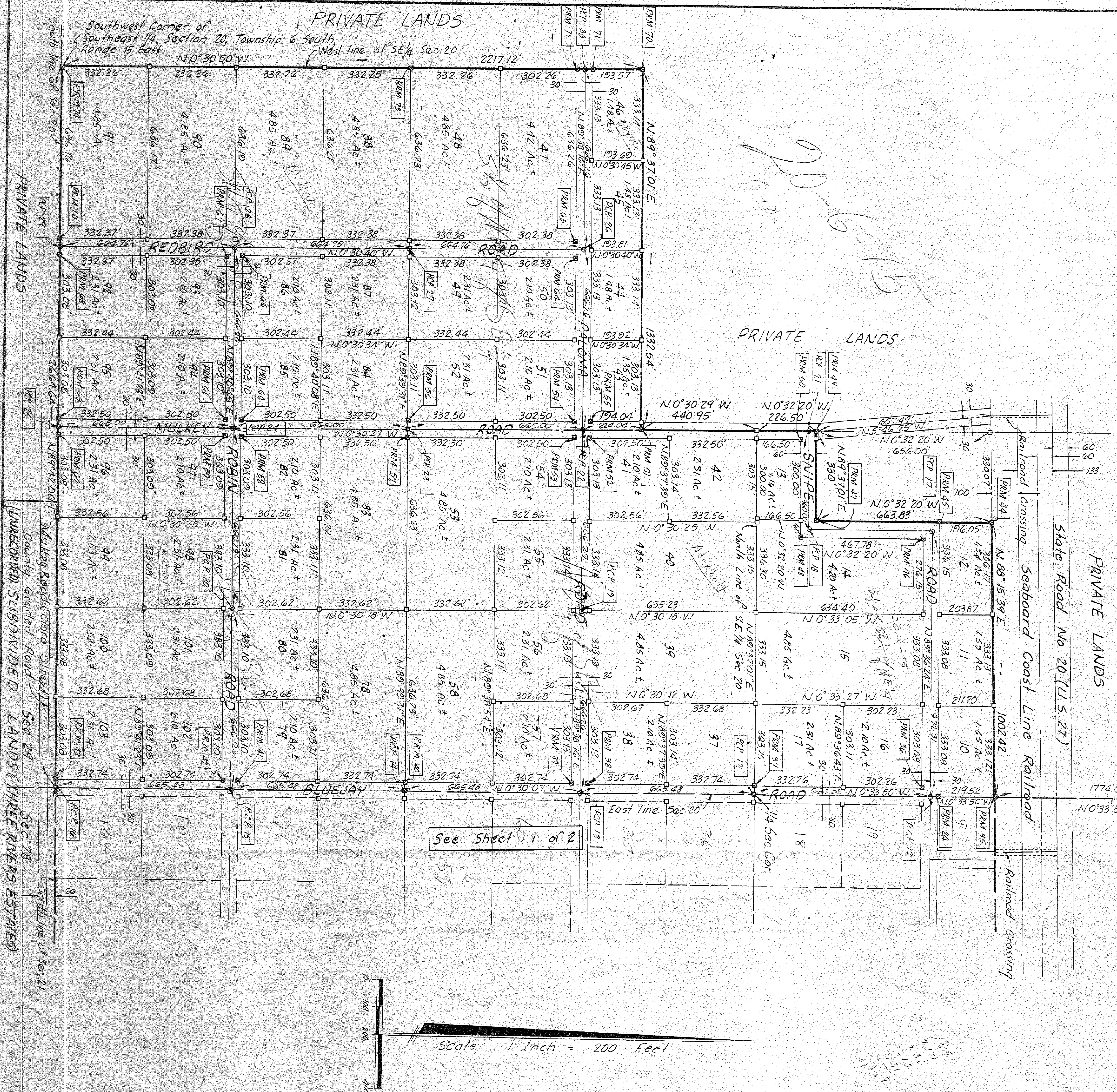


TRI-RIVER FARMS

OF A PART OF
SECTION 20 & 21
TOWNSHIP 6 SOUTH, RANGE 15 EAST
SUWANNEE COUNTY, FLORIDA



ACKNOWLEDGEMENT

STATE OF FLORIDA
COUNTY OF SUWANNEE
I HEREBY CERTIFY that on this 5th day of May, 1973, before me personally appeared LILLIE B. MULKEY, DICKS and LILLIE R. DICKS, to me known to be the president and secretary, respectively, of TRI-RIVER FARMS CORPORATION, a Florida corporation, the corporation described in my previous Notary Public Dedication and that, acknowledge execution hereof for and on behalf of said corporation and that the seal affixed thereto is the corporate seal of said corporation.

Witness my hand and official seal at Tallahassee, State of Florida, this 5th day of May, 1973.
Notary Public, State of Florida
My Commission Expires:
Dec. 20, 1974

ACKNOWLEDGEMENT

STATE OF FLORIDA
COUNTY OF SUWANNEE
I HEREBY CERTIFY that on this 5th day of May, 1973, before me personally appeared LILLIE B. MULKEY, DICKS and LILLIE R. DICKS, to me known to be the president and secretary, respectively, of TRI-RIVER FARMS CORPORATION, a Florida corporation, the corporation described in my previous Notary Public Dedication and that, acknowledge execution hereof for and on behalf of said corporation and that the seal affixed thereto is the corporate seal of said corporation.

Witness my hand and official seal at Branford, State of Florida, this 5th day of May, 1973.
Notary Public, State of Florida
My Commission Expires:
Oct. 2, 1976

CERTIFICATE OF CLERK

FILE NO. _____
NAME _____
I HEREBY CERTIFY that I have examined the foregoing plat and find that it complies in form with Chapter 177, Florida Statutes, and was filed in my office this 17th day of Dec. AD 1973 in Plat Book _____ of the Public Records of Suwannee County, Florida.
Signed: _____, Clerk
Attest: _____, Chairman
Date: December 3, 1973

APPROVED BY BOARD OF COUNTY COMMISSIONERS, SUWANNEE COUNTY, FLORIDA

SURVEYORS CERTIFICATION

I HEREBY CERTIFY that I am a duly authorized Land Surveyor and that this plat is a true and correct representation of the lands surveyed. I further certify that the survey was made under my responsible direction and supervision and that the survey data complies with all of the requirements of Chapter 177, Florida Statutes.

Signed: _____
Lorraine L. Lee, P.L.S.
Via Reg. Cert. No. 1950
Date: Nov. 2, 1973