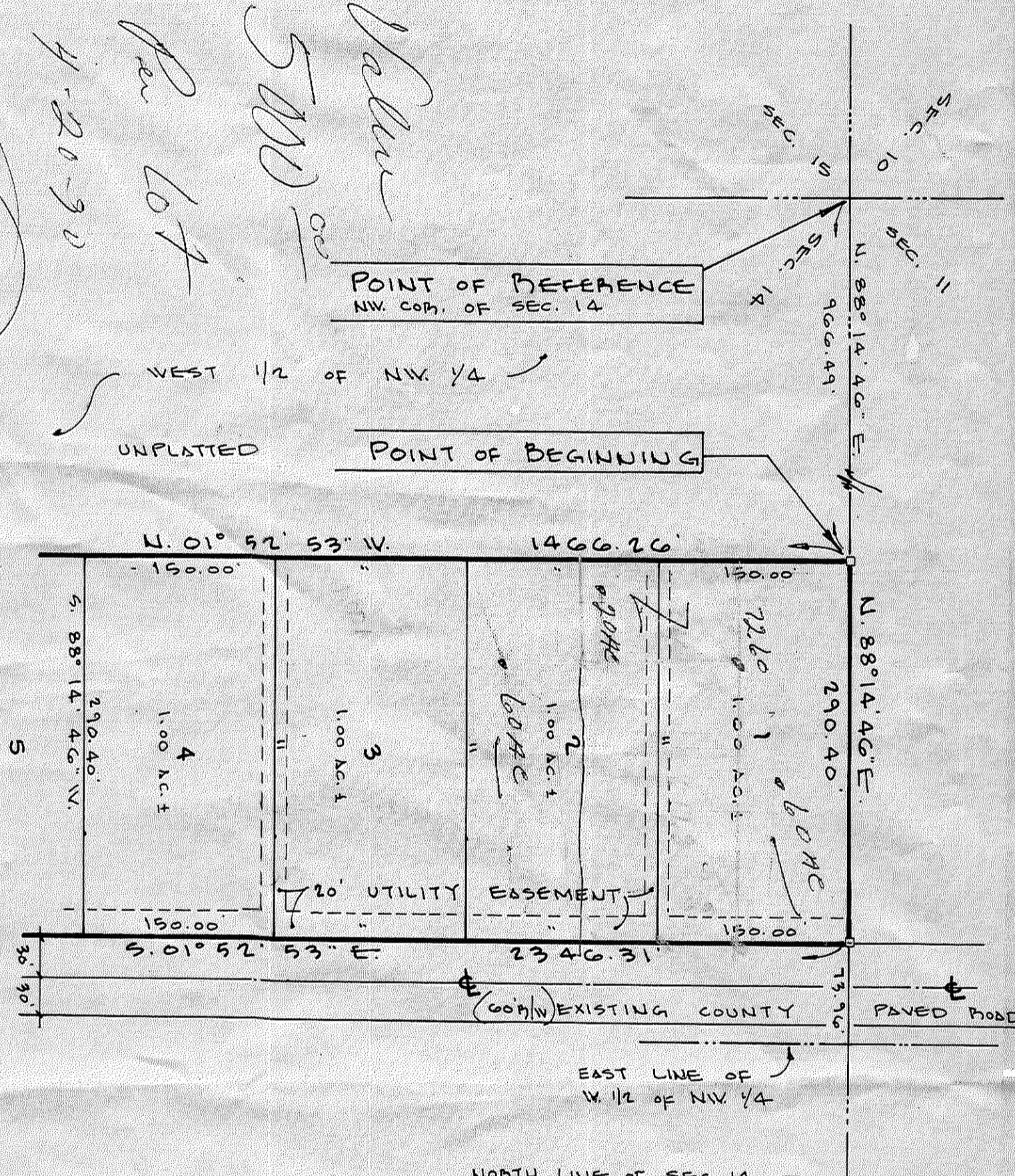
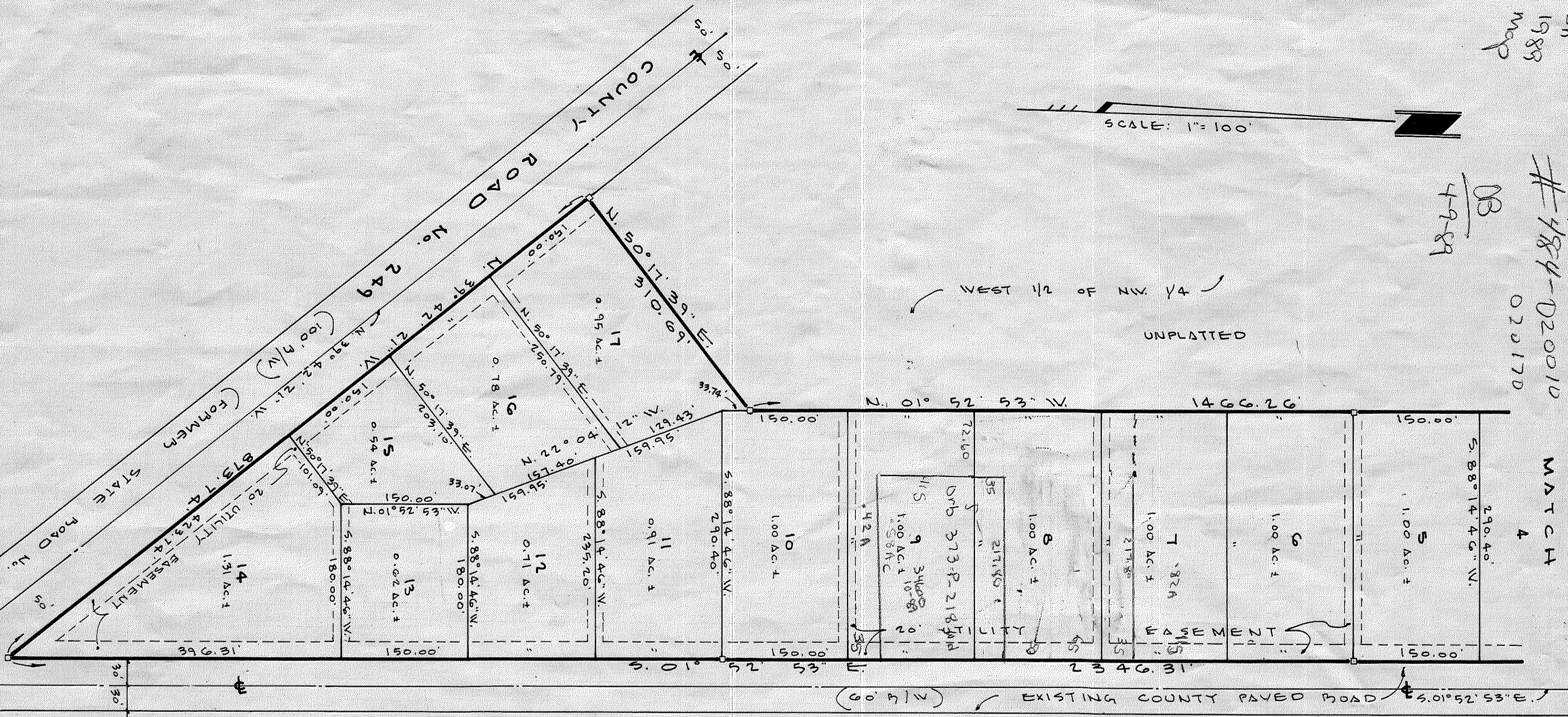


TOWNSHEND MEADOW UNIT TWO

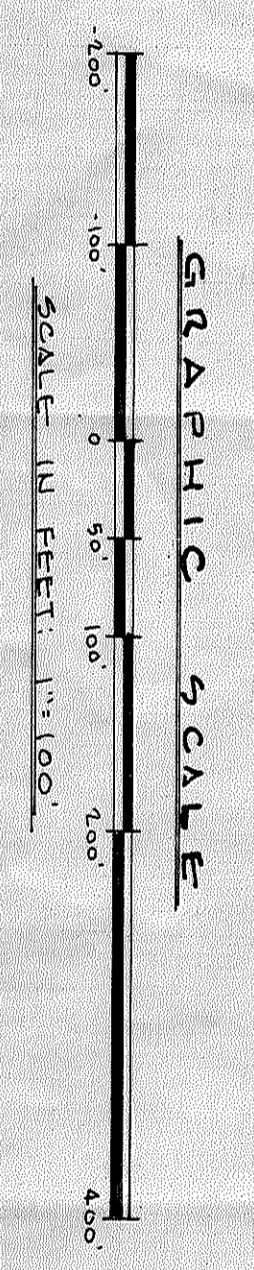
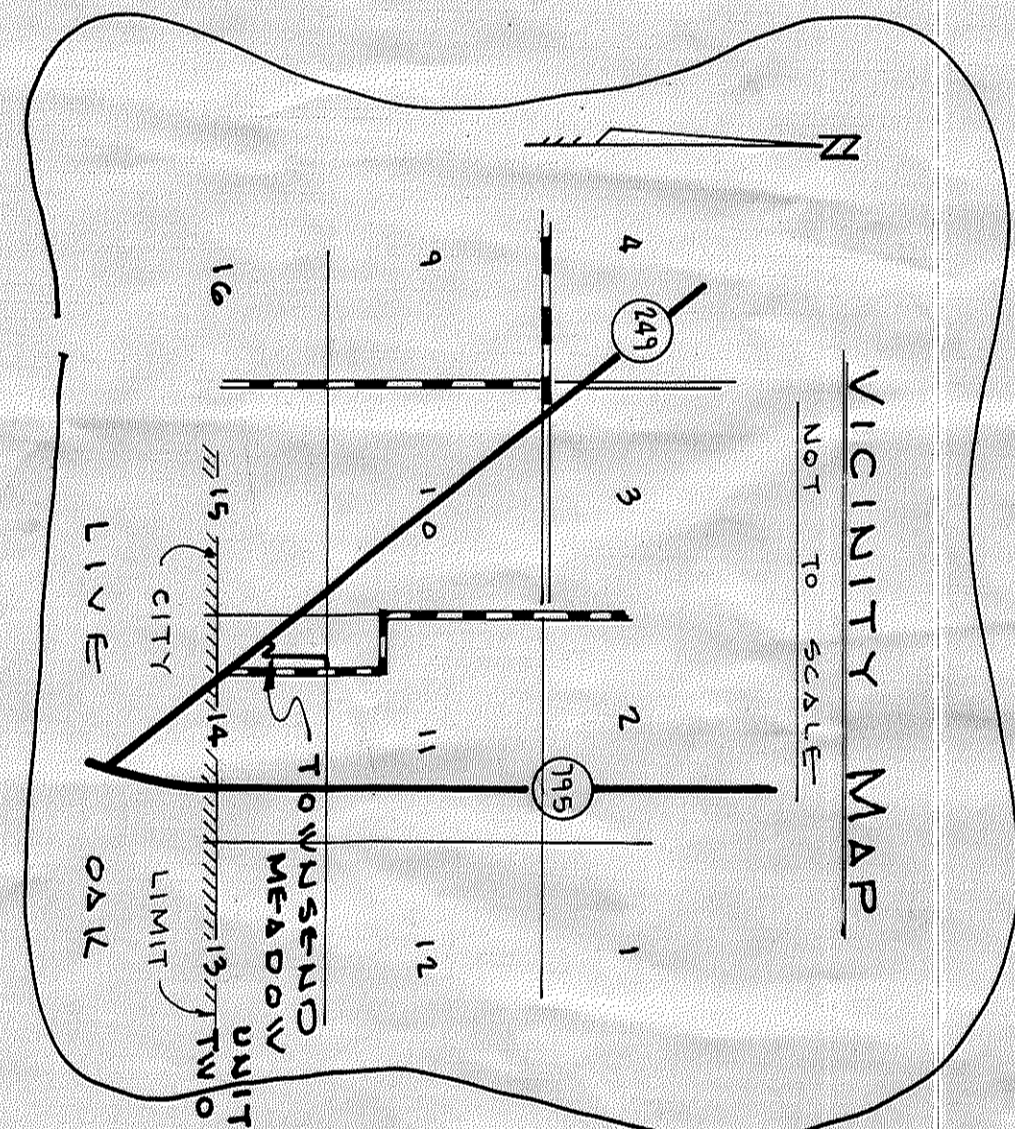
8th 1985 Map
484-020010
02017D
MATCH 4

4989

SCALE: 1"=100'



Ruled May 5-8-90
SK



LEGEND & NOTES
 O Denotes permanent reference monument (P.R.M.)
 D Denotes 20' utility easement
 D Denotes datum projected from intersection to centerline of county road No. 249 ± N. 37° 42' 21\"/>

SITUATED IN: THE WEST 1/2 OF THE NORTHWEST 1/4 OF SECTION 14, TOWNSHIP 2 SOUTH, RANGE 19 EAST, SUWANNEE COUNTY, FLORIDA.

DESCRIPTION: PART OF THE WEST 1/2 OF THE NORTHWEST 1/4 OF SECTION 14, TOWNSHIP 2 SOUTH, RANGE 19 EAST, SUWANNEE COUNTY, FLORIDA BEING MORE PARTICULARLY DESCRIBED AS FOLLOWS: FOR POINT OF REFERENCE CORNER MORE PARTICULARLY CORNER OF SAID SECTION 14, THENCE RUN NORTH 00° 14' 40\"/>

ADOPTION AND DEDICATION:
 KNOW ALL MEN BY THESE PRESENTS THAT ARUE K. TOWNSEND AND ROSSIE L. TOWNSEND AS OWNERS, HAVE CAUSED THE LANDS HEREIN DESCRIBED TO BE SURVEYED, SUBDIVIDED AND PLATTED TO BE KNOWN AS "TOWNSHEND MEADOW, UNIT TWO," AND THAT THE ROAD AND EASEMENTS AS SHOWN ARE HEREBY DEDICATED TO THE PERPETUAL USE OF THE PUBLIC FOR PROPER USES AND PURPOSES HEREON STATED.

Arue K. Townsend
 Arue K. TOWNSEND
 Witness: *Rossie L. Townsend*
 Rossie L. TOWNSEND

STATE OF FLORIDA, COUNTY OF SUWANNEE:
 I HEREBY CERTIFY THAT ON THIS 10th DAY OF March, A.D., 1986, BEFORE ME PERSONALLY APPEARED, ARUE K. TOWNSEND AND ROSSIE L. TOWNSEND, AS OWNERS TO ME KNOWN TO BE THE INDIVIDUALS DESCRIBED IN AND WHO EXECUTED THE FOREGOING DEDICATION AND THEIR ACKNOWLEDGE EXECUTION THEREOF.

WITNESS MY HAND AND SEAL AT Lake Park, STATE OF FLORIDA, THIS 10th DAY OF March, A. D., 1986.

APPROVED BY BOARD OF COUNTY COMMISSIONERS
 SUWANNEE COUNTY, FLORIDA:

SIGNED: *W. C. Smith* CHAIRMAN
 DATE: July 15, 1986
 ATTEST: *Jerry C. Schuchman* CLERK
My Comm. Expires: 7-25-90
My Comm. Expires: 7-25-90

CERTIFICATE OF CLERK:
 I HEREBY CERTIFY THAT THE FOREGOING PLAT HAVING BEEN DULY APPROVED BY THE BOARD OF COUNTY COMMISSIONERS OF SUWANNEE COUNTY, FLORIDA, WAS ACCEPTED AND FILED FOR RECORD THIS 15th DAY OF July, 1986 IN PLAT BOOK 1, PAGE 355 OF THE PUBLIC RECORDS OF SAID SUWANNEE COUNTY, FLORIDA.

Jerry C. Schuchman
 CLERK OF CIRCUIT COURT, SUWANNEE COUNTY, FLORIDA.

SURVEYOR'S CERTIFICATE:

I HEREBY CERTIFY THAT THIS A TRUE AND CORRECT REPRESENTATION OF THE LANDS SURVEYED STRONGLY BELIEVED THAT PERMANENT REFERENCE MONUMENTS, AND P.C.P.'S PERMANENT REFERENCE MONUMENTS HAD BEEN PLACED AS SHOWN AND THAT THE SURVEY DATA SHOWN COMPLIES WITH THE REQUIREMENTS OF CHAPTER 177, FLORIDA STATUTES.

Sherman Frier
 SHERMAN FRIER, P.L.C.

PLA. CERT. No. 2245
 DATE: Dec 5, 1985