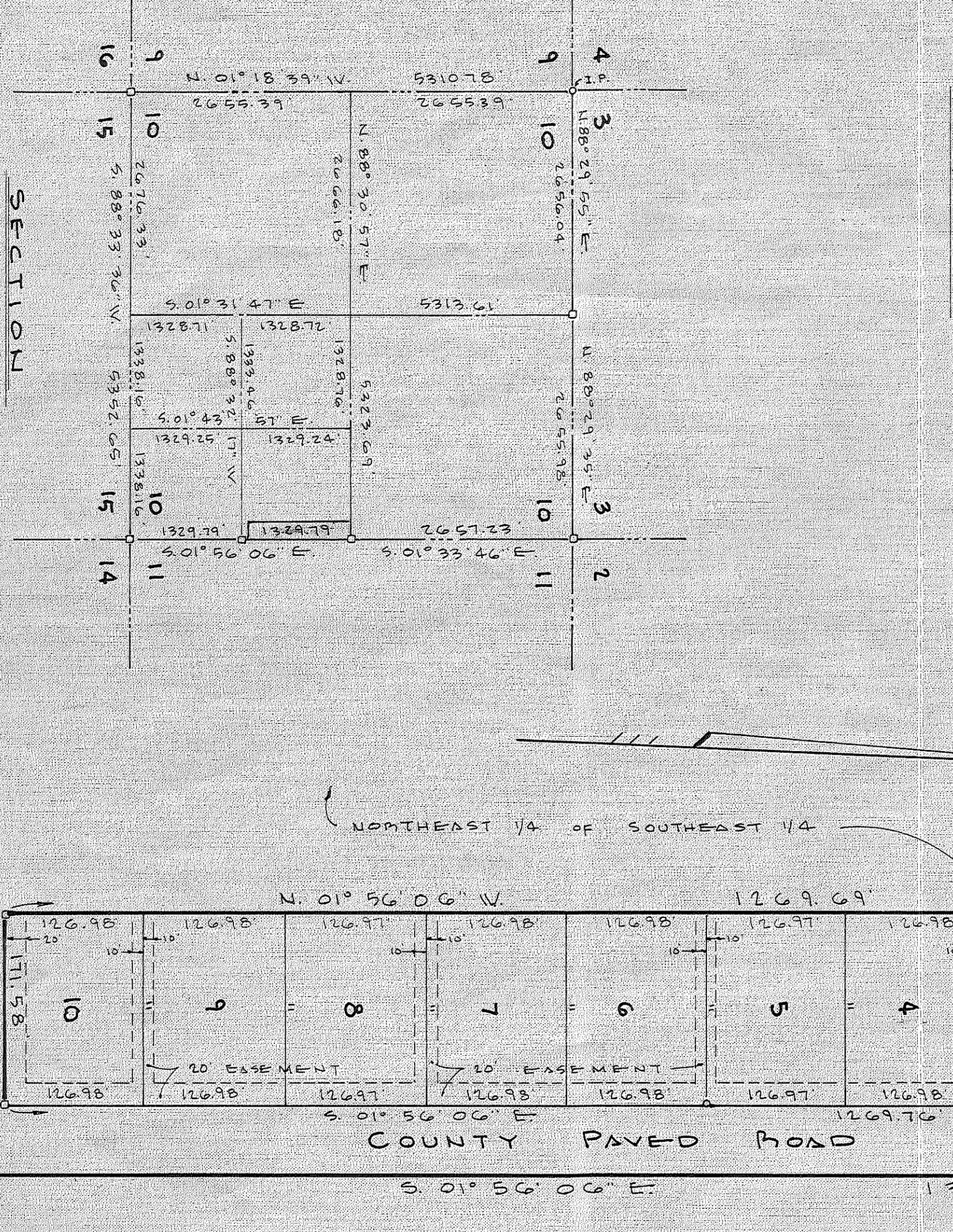
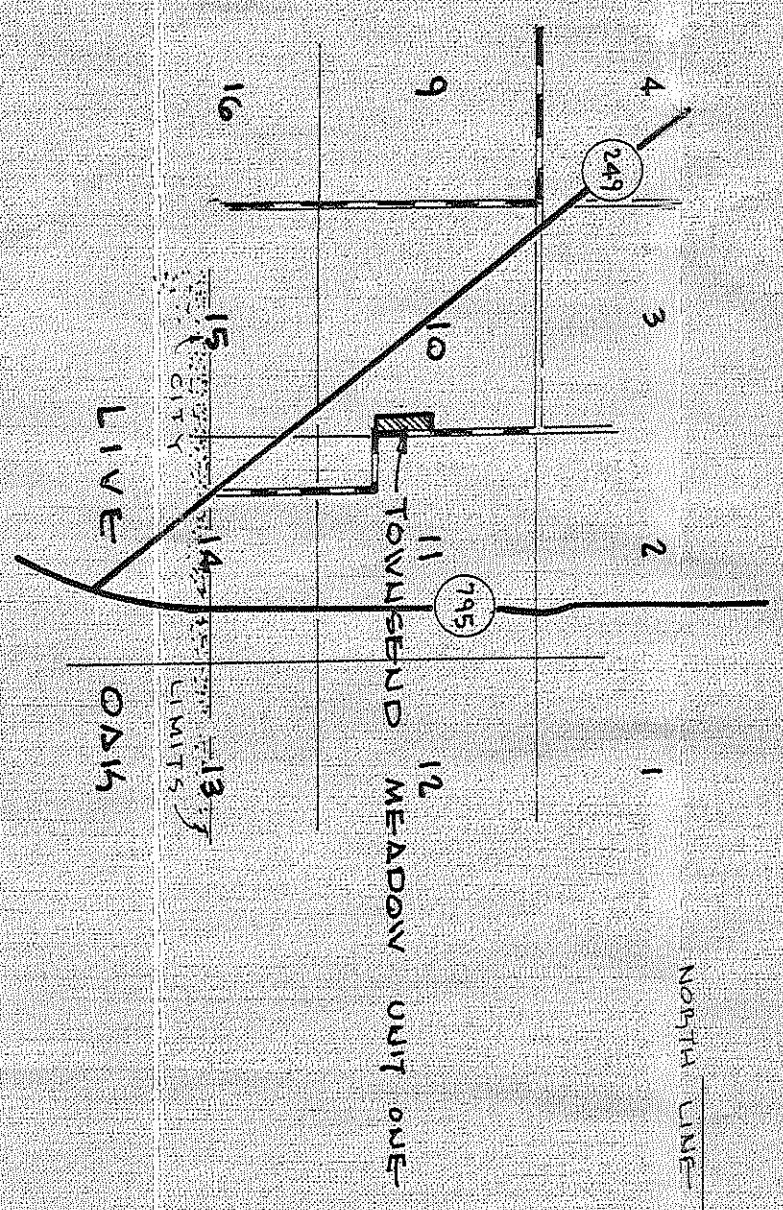


# TOWNSSEND MEADOW UNIT ONE

SITUATED IN: THE NORTHEAST 1/4 OF SECTION 10,  
TOWNSHIP 2 SOUTH, RANGE 13 EAST, SUWANNEE COUNTY, FLORIDA.

**DESCRIPTION:**  
PART OF THE NORTHEAST 1/4 OF THE SOUTHWEST 1/4 OF SECTION 10, TOWNSHIP 2 SOUTH, RANGE 13 EAST, SUWANNEE COUNTY, FLORIDA, BEING MORE PARTICULARLY DESCRIBED AS FOLLOWS: FROM POINT OF BEGINNING COMMENCE AT THE SOUTHWEST CORNER OF SAID NORTH-EAST 1/4 OF THE SOUTHWEST 1/4, THENCE RUN SOUTH 88° 32' 17" WEST ALONG THE SOUTH LINE OF SAID NORTHEAST 1/4 OF THE SOUTHWEST 1/4 A DISTANCE OF 60.00 FEET; THENCE RUN SOUTH 88° 32' 17" WEST A DISTANCE OF 60.00 FEET; THENCE RUN SOUTH 88° 32' 17" WEST A DISTANCE OF 111.58 FEET; THENCE RUN NORTH 01° 56' 06" WEST A DISTANCE OF 111.58 FEET TO THE NORTH LINE OF SAID SOUTHWEST 1/4 OF THE SOUTHWEST 1/4; THENCE RUN NORTH 88° 30' 57" EAST ALONG SAID NORTH LINE A DISTANCE OF 231.58 FEET; THENCE RUN SOUTH 01° 56' 06" WEST ALONG THE EAST LINE OF SAID NORTHEAST 1/4, A DISTANCE OF 111.58 FEET TO THE POINT OF BEGINNING.



**LEGEND:**  
O P.M. DENOTES PERMANENT REFERENCE MONUMENT  
R.C.P. DENOTES REMANENT CONTROL POINT  
BEARING FROM MODIFIED CONTROL POINT  
AS SHOWN ON SECTION BEGAINING  
EXEMPTIONS SHOWN HEREON ARE FOR UTILITIES  
NOTE: EACH LOT IS 60.00 ACRES.

**APPROVED BY:**  
BOARD OF COUNTY COMMISSIONERS  
SUWANNEE COUNTY, FLORIDA:

**SIGNED:** \_\_\_\_\_, CHAIRMAN  
**ATTEST:** \_\_\_\_\_, CLERK  
**DATE:** February 29, 1987

**ADOPTION AND DEDICATION**

KNOW ALL MEN BY THESE PRESENTS THAT ABILE H. TOWNSEND, AS OWNER HAS CAUSED THE LOTS HEREIN DESCRIBED TO BE SUBMITTED, SUBDIVIDED AND PLATTED TO BE KNOWN AS TOWNSSEND MEADOW UNIT ONE AND THAT THE ROAD AND EASEMENTS AS SHOWN ARE HEREBY DEDICATED TO THE PERPETUAL USE OF THE PUBLIC FOR PROPER USES AND PURPOSES HEREON STATED.

WITNESSES:  
ABILE H. TOWNSEND;  
BOSSIE L. TOWNSEND;

**STATE OF FLORIDA, COUNTY OF SUWANNEE:**

I HEREBY CERTIFY THAT ON THIS \_\_\_\_\_ DAY OF \_\_\_\_\_ A.D. 1987, BEFORE ME PERSONALLY APPEARED, ABILE H. TOWNSEND AND BOSSIE L. TOWNSEND, AS OWNERS TO BE KNOWN AS TOWNSSEND MEADOW UNIT ONE AND THAT DEDICATION AND THEY ACKNOWLEDGE EXECUTION THEREOF, STATE OF FLORIDA, THIS \_\_\_\_\_ DAY OF \_\_\_\_\_ A.D. 1987.

**DEDICATION FOR MORTGAGEE:**

THIS IS TO CERTIFY THAT THE SUWANNEE COUNTY CREDIT ASSOCIATION, A CORPORATION UNDER THE LAWS OF THE STATE OF FLORIDA, BEING A MORTGAGEE OF THE LANDS DESCRIBED IN THE FOREGOING, SECTION OF THIS PLAT DO HEREBY JOIN IN AND MAKE THEMSELVES A PARTY OF THE DEDICATION OF SAID LANDS AND PLAT KNOWN AS "TOWNSSEND MEADOW UNIT ONE" FOR THE USES AND PURPOSES THEREIN EXPRESSED AND DEICATE THE ROAD AND EASEMENTS, SHOWN ON THIS PLAT TO THE PUBLIC.

IN WITNESS WHEREOF THE SUWANNEE COUNTY CREDIT ASSOCIATION HAS CAUSED THESE PRESENTS TO BE SIGNED BY ITS PRESIDENT, CALVIN B. THOMAS, AND ITS VICE PRESIDENT, WILSON J. BARNETTE, BY AND WITH THE AUTHORITY OF ITS BOARD OF DIRECTORS, IN ITS NAME AND WITH ITS CORPORATE SEAL AFFIXED THIS \_\_\_\_\_ DAY OF \_\_\_\_\_ A.D. 1987.

THE SUWANNEE COUNTY CREDIT ASSOCIATION:

WITNESSES:  
CALVIN B. THOMAS, PRESIDENT  
WILSON J. BARNETTE, VICE PRESIDENT

**STATE OF FLORIDA, COUNTY OF SUWANNEE:**

I HEREBY CERTIFY THAT ON THIS \_\_\_\_\_ DAY OF \_\_\_\_\_ A.D. 1987, BEFORE ME PERSONALLY APPEARED CLIENTS IN THOMAS, PRESIDENT, AND WILSON J. BARNETTE, VICE PRESIDENT, OF THE SUWANNEE COUNTY CREDIT ASSOCIATION, A CORPORATION UNDER THE LAWS OF THE STATE OF FLORIDA, TO BE KNOWN AS TOWNSSEND MEADOW UNIT ONE AND THAT DEDICATION AND THEY ACKNOWLEDGE EXECUTION THEREOF, STATE OF FLORIDA, THIS \_\_\_\_\_ DAY OF \_\_\_\_\_ A.D. 1987.

**DEDICATION FOR MORTGAGEE:**

THIS IS TO CERTIFY THAT THE FEDERAL LAND BANK OF COLUMBIA, OF COLUMBIA SOUTH CAROLINA, A CORPORATION UNDER THE LAWS OF THE UNITED STATES OF AMERICA, BEING A MORTGAGEE OF THE LANDS DESCRIBED IN THE FOREGOING, SECTION OF THIS PLAT, DO HEREBY JOIN IN AND MAKE THEMSELVES A PARTY OF THE DEDICATION OF SAID LANDS AND PLAT KNOWN AS "TOWNSSEND MEADOW UNIT ONE" FOR THE USES AND PURPOSES THEREIN EXPRESSED AND DEICATE THE ROAD AND EASEMENTS, SHOWN ON THIS PLAT TO THE PUBLIC.

IN WITNESS WHEREOF THE FEDERAL LAND BANK OF COLUMBIA, HAS CAUSED THESE PRESENTS TO BE SIGNED BY ITS VICE PRESIDENT, WALTER R. LAUGHLIN, JR., AND ITS ASSISTANT SECRETARY, FRIZZEL E. JAMES, BY AND WITH THE AUTHORITY OF ITS BOARD OF DIRECTORS IN ITS NAME AND WITH ITS CORPORATE SEAL AFFIXED THIS 12 DAY OF January A.D. 1987.

THE FEDERAL LAND BANK OF COLUMBIA:

WALTER R. LAUGHLIN, JR., VICE PRESIDENT  
FRIZZEL E. JAMES, ASSISTANT SECRETARY

**STATE OF SOUTH CAROLINA, COUNTY OF RICHLAND:**

I HEREBY CERTIFY THAT ON THIS 12 DAY OF January A.D. 1987 BEFORE ME PERSONALLY APPEARED Walter R. Laughlin, Jr. AND FRIZZEL E. JAMES, OF THE FEDERAL LAND BANK OF COLUMBIA, A CORPORATION UNDER THE LAWS OF THE UNITED STATES OF AMERICA, TO BE KNOWN AS TOWNSSEND MEADOW UNIT ONE AND THAT DEDICATION AND THEY ACKNOWLEDGE EXECUTION THEREOF, STATE OF SOUTH CAROLINA, THIS 12 DAY OF January A.D. 1987.

WALTER R. LAUGHLIN, JR., VICE PRESIDENT  
FRIZZEL E. JAMES, ASSISTANT SECRETARY

**CERTIFICATE OF CLERK:**

I HEREBY CERTIFY THAT THE FOREGOING PLAT HAVING BEEN DULY APPROVED BY THE BOARD OF COUNTY COMMISSIONERS OF SUWANNEE COUNTY, FLORIDA, WAS ACCEPTED AND FILED FOR RECORD THIS 22nd DAY OF March A.D. 1987 IN PLAT BOOK 2 PAGE 332 OF THE PUBLIC RECORDS OF SUWANNEE COUNTY, FLORIDA.

\_\_\_\_\_  
Clerk of the Court

**SURVEYOR'S CERTIFICATE:**

I HEREBY CERTIFY THAT THIS PLAT IS A TRUE AND CORRECT REPRESENTATION OF THE LANDS SHOWN AND SHOWN HEREON, THAT PERMANENT REFERENCE MONUMENTS AND REMANENT CONTROL POINTS HAVE BEEN PLACED AS SHOWN, AND THAT THE SURVEY WAS ACCORDING TO THE INSTRUMENTS WITH THE REQUIREMENTS OF CHAPTER 111, FLORIDA STATUTES.

\_\_\_\_\_  
Surveyor