

# THREE RIVERS ESTATES

## SECTION NUMBER 1-5

A SUBDIVISION OF A PART OF GOVERNMENT LOTS 6 AND 7, SECTION 28, GOVERNMENT LOT 2, SECTION 33 AND GOVERNMENT LOT 1 AND 7, SECTION 32, TOWNSHIP 5 SOUTH, RANGE 15 EAST SWANNEE COUNTY, FLORIDA

### DESCRIPTION

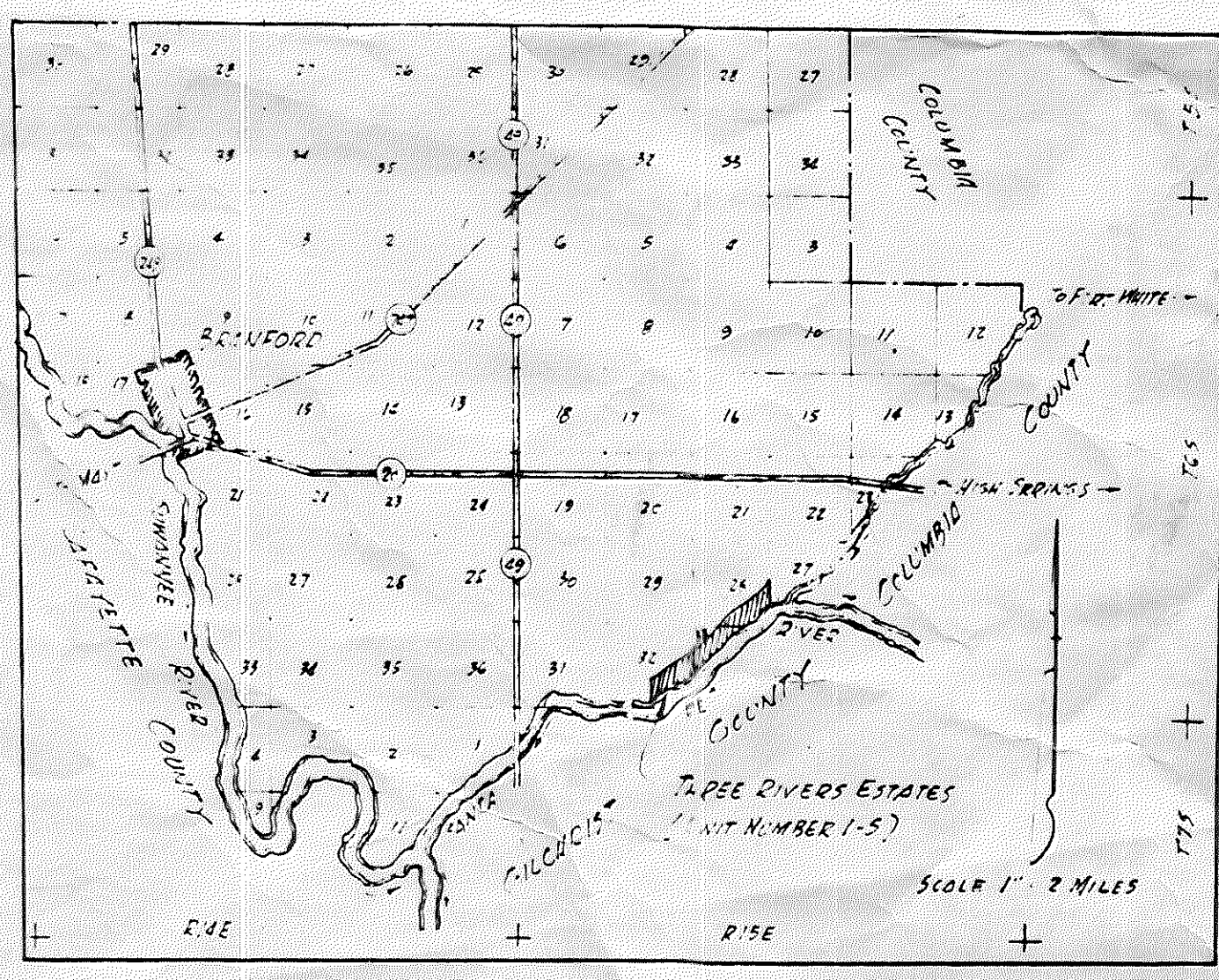
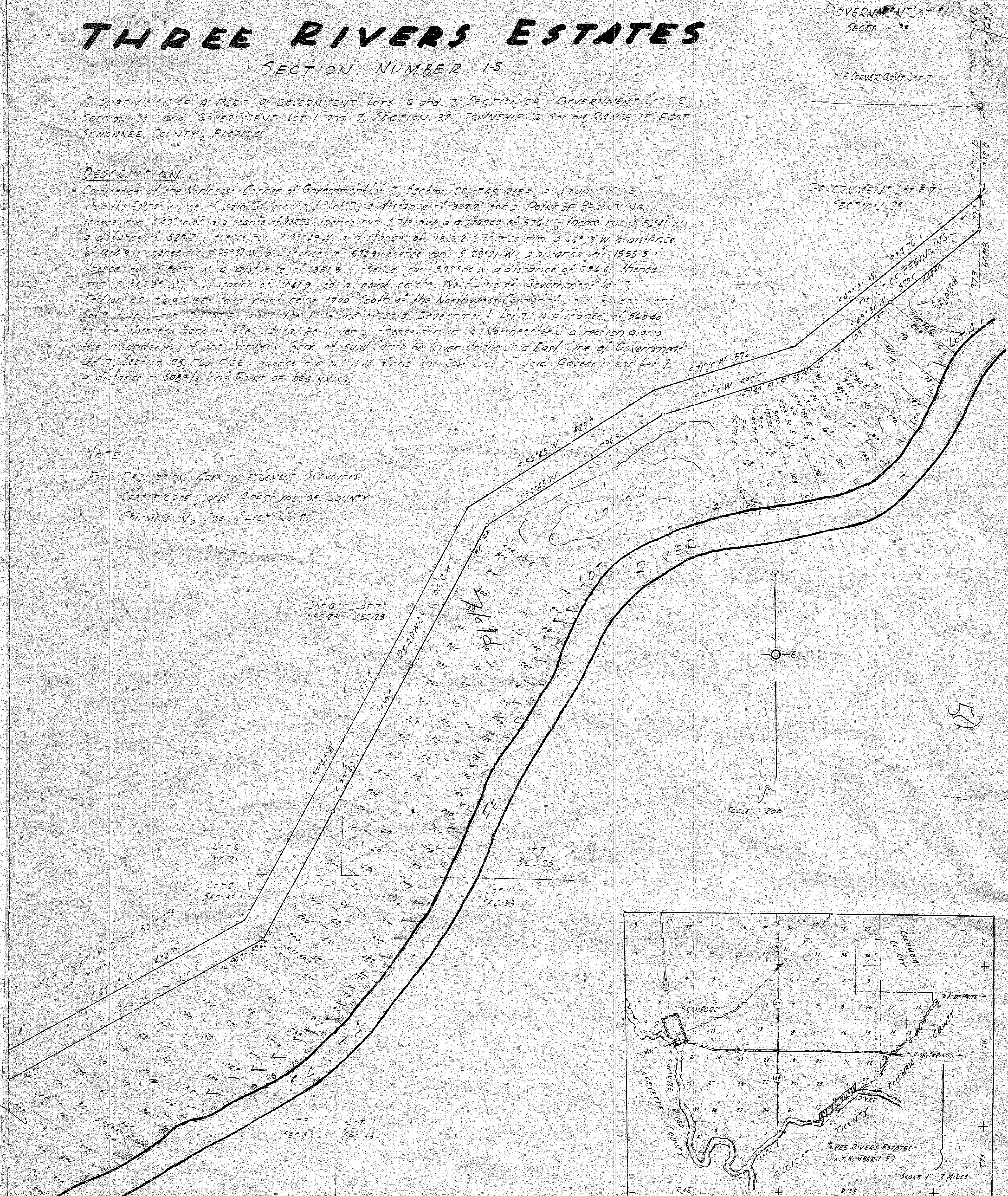
Commence at the Northeast Corner of Government Lot 7, Section 28, T. 5 S., R. 15 E., and run S 71° 15' E, along the Eastern Line of said Government Lot 7, a distance of 382.2 for a POINT OF BEGINNING; thence run S 40° 15' W a distance of 937.5; thence run S 71° 15' W a distance of 570.1; thence run S 65° 45' W a distance of 520.7; thence run S 33° 45' W a distance of 1810.2; thence run S 40° 15' W a distance of 1462.9; thence run S 45° 21' W a distance of 572.9; thence run S 23° 21' W a distance of 1555.5; thence run S 26° 27' W a distance of 1351.3; thence run S 77° 10' W a distance of 594.6; thence run S 44° 25' W a distance of 1041.9 to a point on the West Line of Government Lot 7, Section 28, T. 5 S., R. 15 E., said point being 1700' South of the Northwest Corner of said Government Lot 7; thence run S 1° 55' E, along the West Line of said Government Lot 7, a distance of 560.0 to the Northern Bank of the Santa Fe River; thence run in a Meandering direction along the meandering of the Northern Bank of said Santa Fe River to the said East Line of Government Lot 7, Section 28, T. 5 S., R. 15 E.; thence run N 15° 15' W along the East Line of said Government Lot 7 a distance of 508.3 to the POINT OF BEGINNING.

### NOTE

FOR DEDICATION, ACKNOWLEDGMENT, SURVEYOR'S CERTIFICATE, AND APPROVAL OF COUNTY COMMISSION, SEE SHEET NO. 2

GOVERNMENT LOT #1  
SECTION 28  
N.E. CORNER GOV. LOT 7

GOVERNMENT LOT #7  
SECTION 28



PLAN SHOWING GENERAL LOCATION OF THREE RIVERS ESTATES, UNIT NO. 1-5

Three Rivers Estates  
Section 1-5

PAGE 53(A)