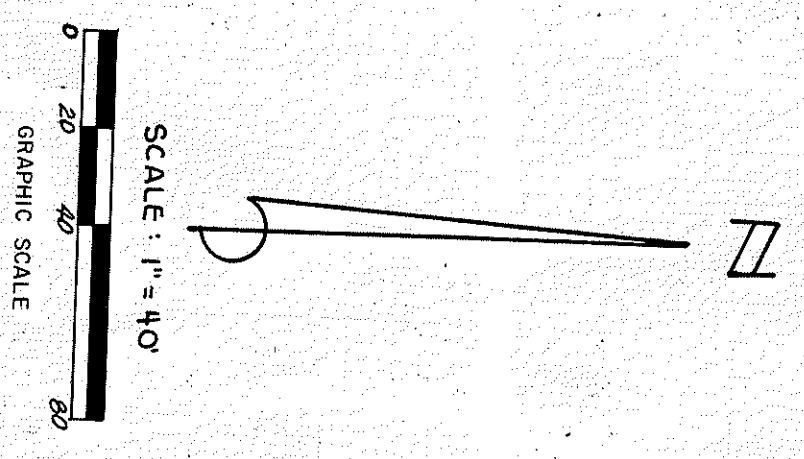
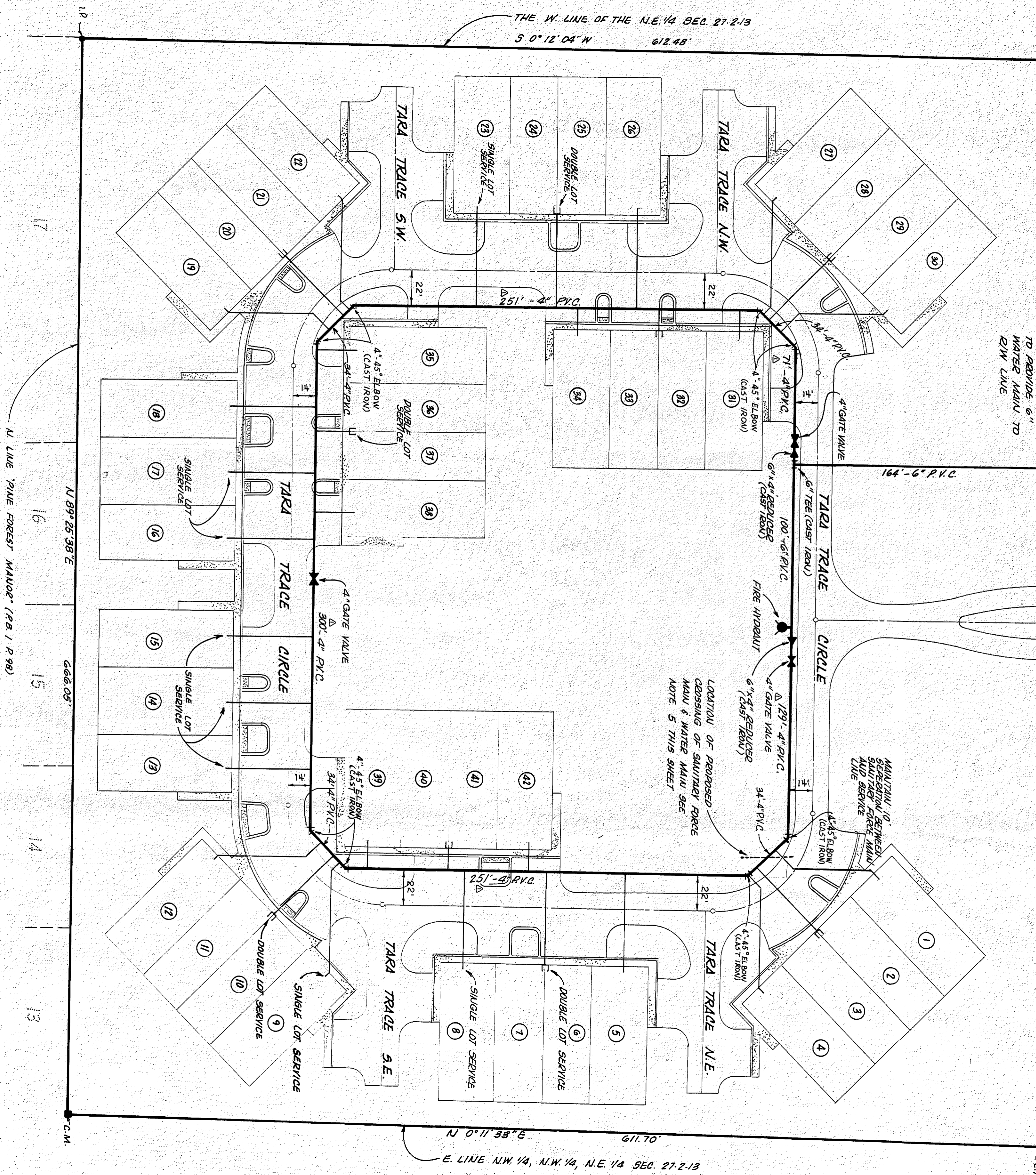
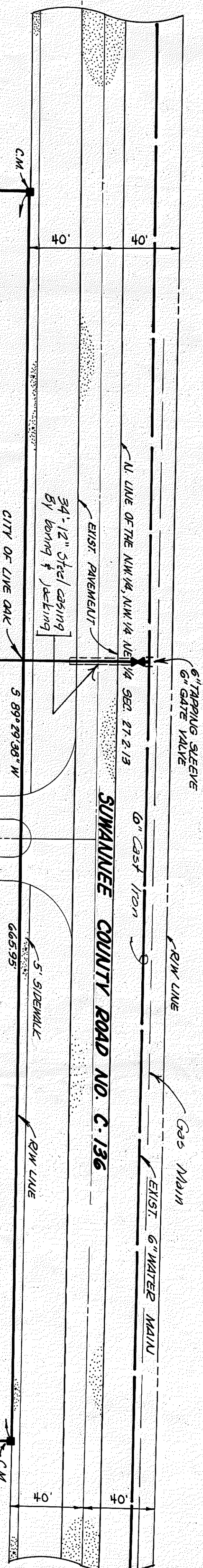


NOTE:
 The locations of the existing water main & gas main have not been field verified by the Engineer. The contractor shall have locations verified.



ENGINEER'S NOTES

- 1 SERVICE LINE SHALL BE EITHER SINGLE LOT SERVICE LINES TERMINATING AT THE FRONT LOT LINE MIDWAY BETWEEN SIDE LOT LINES OR DOUBLE LOT SERVICE LINES TERMINATING AT THE FRONT LOT LINE ALONG SIDE LOT LINES. SERVICE LINES ARE INDICATED ON THE PLAN.
- 2 SUMMARY OF SERVICES
 A. SINGLE LOT SERVICES - 24
 B. DOUBLE LOT SERVICES - 9
- 3 THE 4"-90° ELBOWS (QUARTER BENDS) AND THE 6"x4" REDUCERS SHALL BE CAST IRON. MEETING ALL APPLICABLE REQUIREMENTS OF ANY A.C.I. SPECIFICATIONS OR THEIR EQUAL.
- 4 THE FIRE HYDRANT INDICATED SHALL BE A 3-WAY HYDRANT WITH 2 1/2" HOSE NOZZLES AND 1-4 1/2" FFWER NOZZLE AND SHALL COMPLY WITH ANY A.C.I. SPECIFICATIONS. WHEELER CENTRIFUGAL FIRE HYDRANT A-423 OR EQUAL.
- 5 WHERE THE SANITARY FORCE MAIN AND THE WATER MAIN CROSS, THE WATER MAIN SHALL PASS OVER THE FORCE MAIN WITH A MINIMUM OF 18 INCHES SEPARATION. AT THE POINT OF CROSSING, 20 FOOT SECTIONS OF WATER MAIN AND SANITARY FORCE MAIN SHALL BE DERIVED TO PROVIDE UNITS EQUIVALENT AND AT MAXIMUM SEPARATION (70').
- 6 ALL LINES SHALL HAVE AT LEAST 30 INCHES OF EARTH COVER EXCEPT THE ENDS OF SERVICE LINES WHICH SHALL TERMINATE AT A POINT 12 INCHES BELOW FINISHED GRADE.

This is Sheet 6 of 25.
 Taken from proposed construction drawings submitted to the City of Live Oak.

TARA TRACE
 WATER MASTER
 RCMCCRAY AND ASSOCIATES, INC.