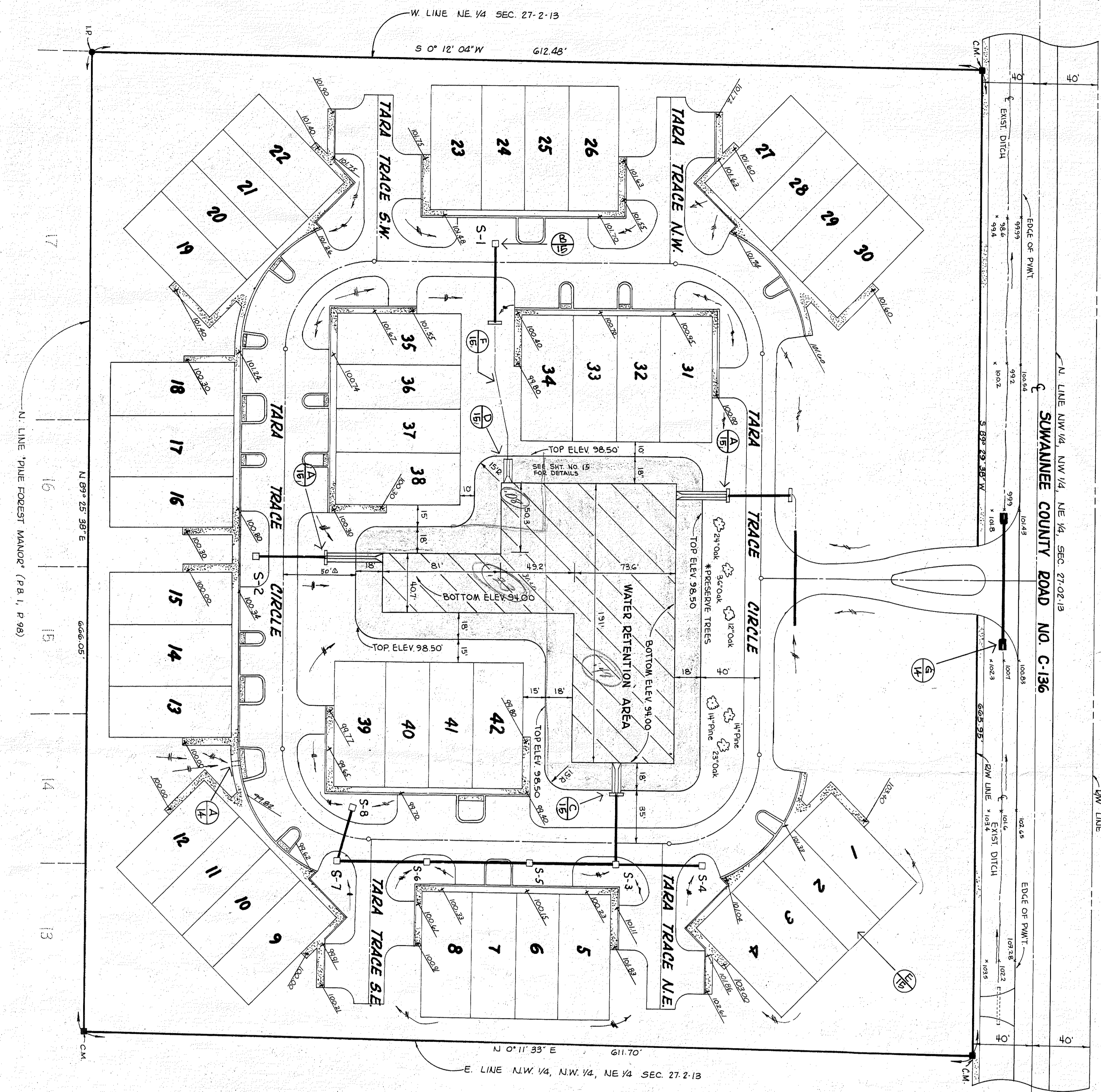
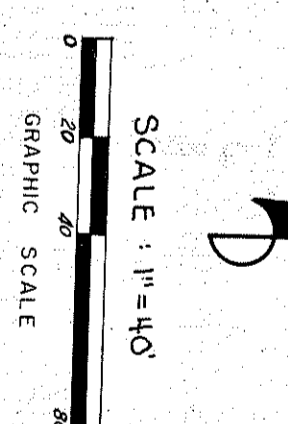


Tara Trace

TARA TRACE  
 SECTION 27, TOWNSHIP 2 SOUTH, RANGE 13 EAST  
 LINE OAK, SUMANNEE COUNTY, FLORIDA  
 SHEET 3 OF 7  
 PLAT BOOK PAGE 325



- ENGINEER'S NOTES**
1. THE FINISHED GRADES SHALL BE SUCH THAT THE SLOPE (DRAIN) IS IN THE DIRECTION OF THE ARROWS SHOWN (--->).
  2. FOR ADDITIONAL DETAIL, SEE FULL AND PARTIAL SHEETS.
  3. FINAL GRADES MAY BE FIELD ADJUSTED AS REQUIRED.



*John R. ...*  
 0.8  
 1.3  
 1.8  
 1.9 ft

**SUMMARY OF INLETS**

STRUCTURE	TYPE	LOCATION	DESCRIPTION
S-1	TYPE C	15+60.00, 12.00' Lt.	GDATE ELEV. 100.50 FL. ELEV. 97.08
S-2	TYPE C	18+80.35, 16.21' Lt.	GDATE ELEV. 99.40 FL. ELEV. 96.00
S-3	TYPE C	20+11.53, 32.71' Rt.	TOP ELEV. 99.89 SLOT ELEV. (S) 98.50 FL. ELEV. 97.07
S-3	TYPE C	22+72.91, 15.40' Lt.	GDATE ELEV. 98.80 SLOT ELEV. (S) 98.50 FL. ELEV. 95.92
S-4	TYPE C	23+66.00, 17.60' Lt.	GDATE ELEV. 99.00 SLOT ELEV. (S) 98.50 FL. ELEV. 95.43
S-5	TYPE C	22+15.00, 15.00' Lt.	GDATE ELEV. 98.80 FL. ELEV. 95.44
S-6	TYPE C	21+57.21, 15.46' Lt.	GDATE ELEV. 98.80 SLOT ELEV. (S) 98.30 FL. ELEV. 95.60
S-7	TYPE C	20+98.28, 17.75' Lt.	GDATE ELEV. 99.00 SLOT ELEV. (S) 98.50 FL. ELEV. 95.70
S-8	TYPE C	20+98.28, 16.67' Lt.	GDATE ELEV. 98.80 SLOT ELEV. (S) 98.30 FL. ELEV. 95.00

- LEGEND**
- INDICATES FINISHED ELEVATION ON TOP OF CURB OR WALK AS SHOWN
  - INDICATES DETAIL A, SHEET 15
  - INDICATES CURB AND WALK CONC.
  - INDICATES THE SLOPE OF FINISHED GRADE.

This is Sheet 3 of 25.  
 Taken from proposed construction drawings submitted to the City of Live Oak.

**TARA TRACE**  
**DRAINAGE MASTER**

BC McCRAY & ASSOCIATES, INC.  
 ENGINEERING & LAND SURVEYING & SITE PLANNING  
 P.O. BOX 1371, MAVO, FLORIDA 32064, PH. (904) 294-1233

DATE: \_\_\_\_\_ DRAWN BY: ELK APPROVED BY: H.L.M. PROJECT NO. 8233  
 FIELD WORK COMPLETED: \_\_\_\_\_ NOS: \_\_\_\_\_ SHEET 3 OF 25

REVISED 2/13