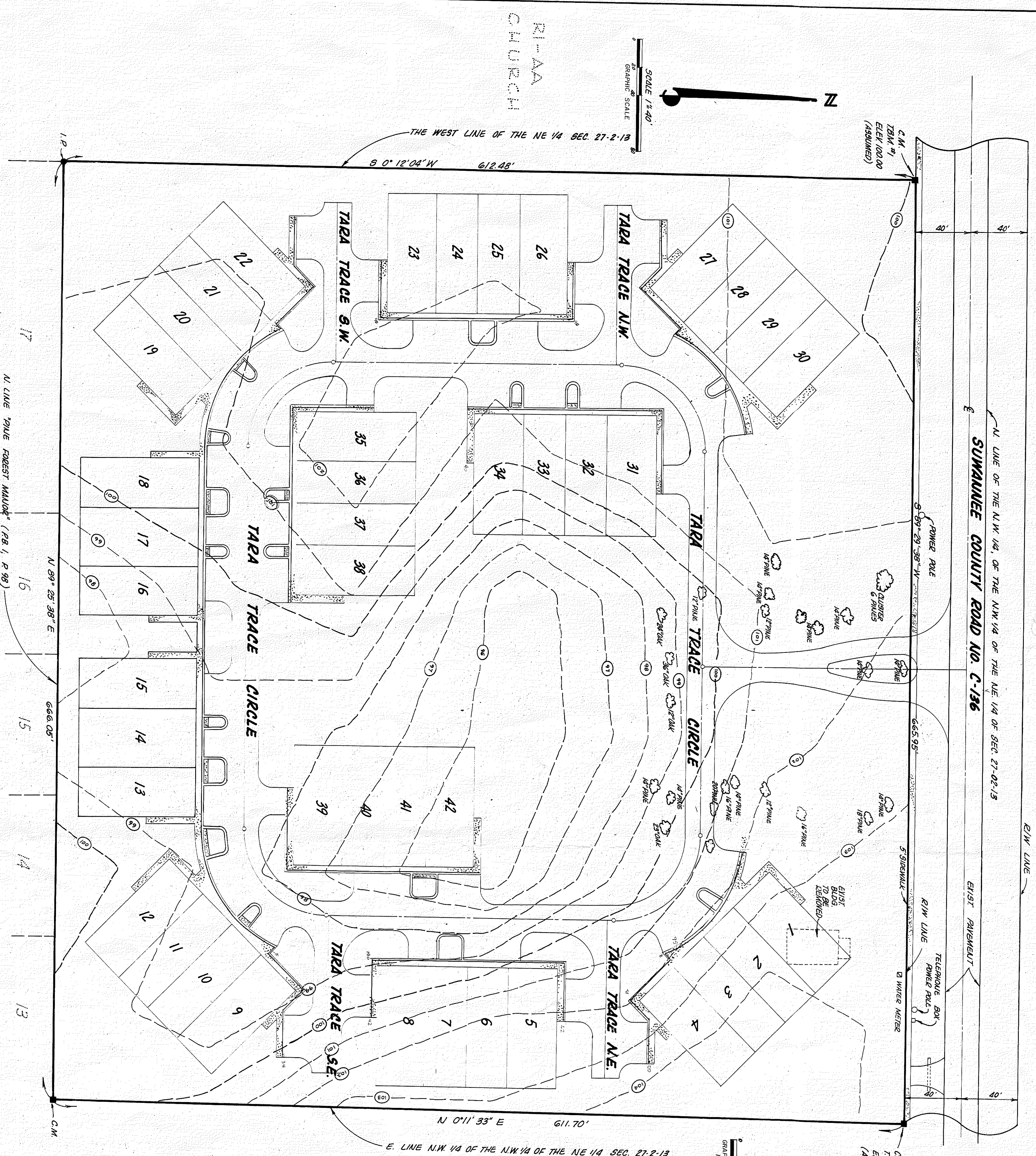


Tara Trace

TARA TRACE
SECTION 27, TOWNSHIP 2 SOUTH, RANGE 13 EAST
LINE OAK, SUWANNEE COUNTY, FLORIDA
SHEET 2 OF 2

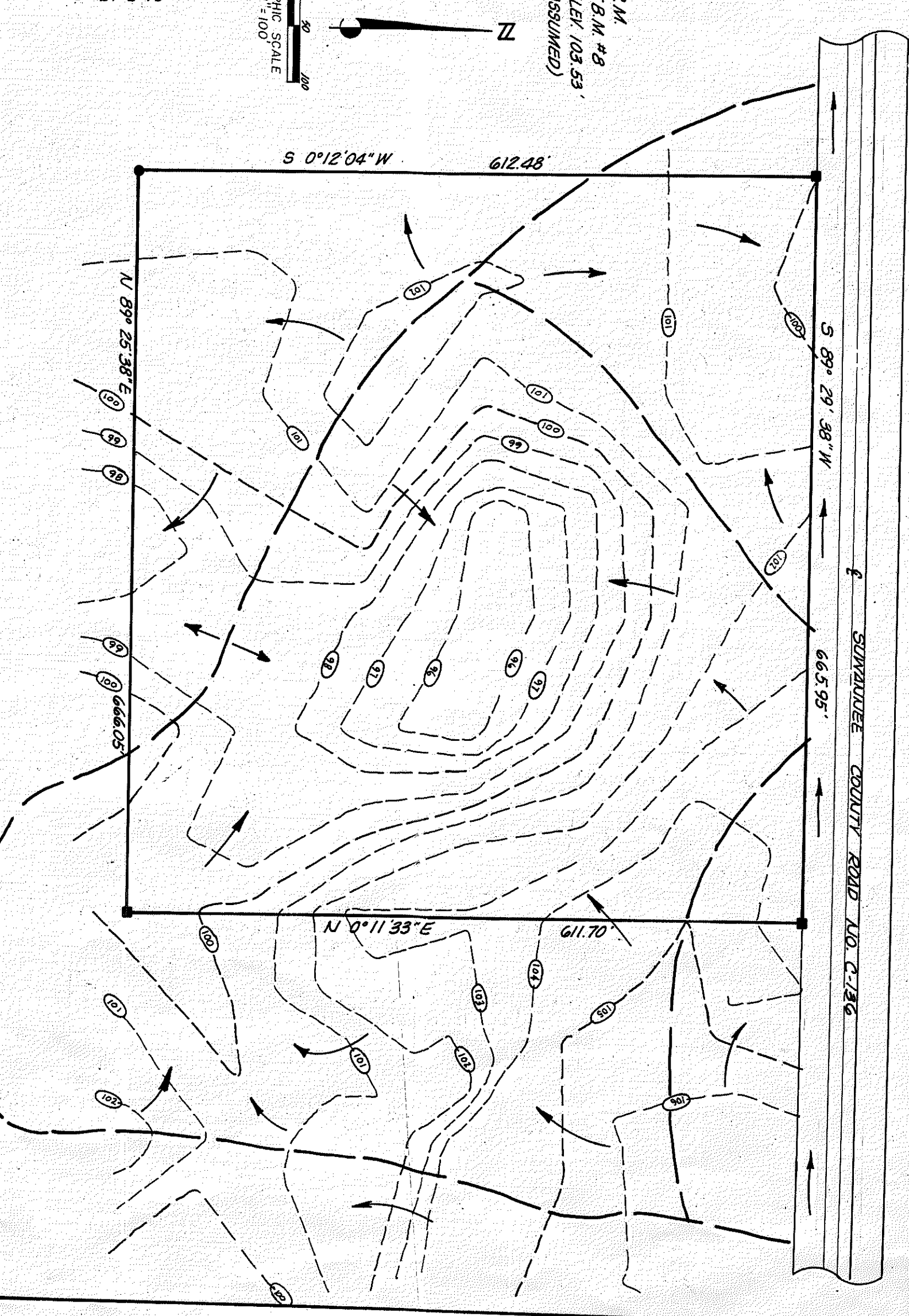
PLAT BOOK PAGE 334



R1-AA RESIDENTIAL
PINE FOREST MANOR

R1-AA VACANT
RESIDENTIAL

EXISTING DRAINAGE AREAS



ENGINEER'S NOTES

1. THE TOP SHOWN HEREON HAS BEEN PROJECTED FROM AN ASSUMED DATUM; ELEVATION 100.00 ASSUMED AT NORTHWEST CORNER OF PARCELS.
2. TERRAIN DATA MADE (T.B.M.) (ASSUMED DATUM)
 - A. T.B.M. #1 ELEVATION 100.00
 - B. C.D.M. #9 ELEVATION 103.33
 CONCRETE MONUMENT AT NORTHWEST CORNER OF PROPERTY.

This is Sheet 2 of 25.
Taken from proposed construction
drawings submitted to the
City of Line Oak.

TARA TRACE

EXISTING TOPO

B.C. MCCRAY & ASSOCIATES INC.
ENGINEERING - LAND SURVEYING - SITE PLANNING

FO. BOX 137, MAKO, FLORIDA 32066, PH (904) 294-1233
DATE: SEPT. 13, 1982, FOR RECORD, PG. 34 OF 34 SHEET 2 OF 25
DRAWN BY: E.W.K. APPROVED BY: E.L.H. PROJECT NO. 8223
FIELD WORK COMPLETED