

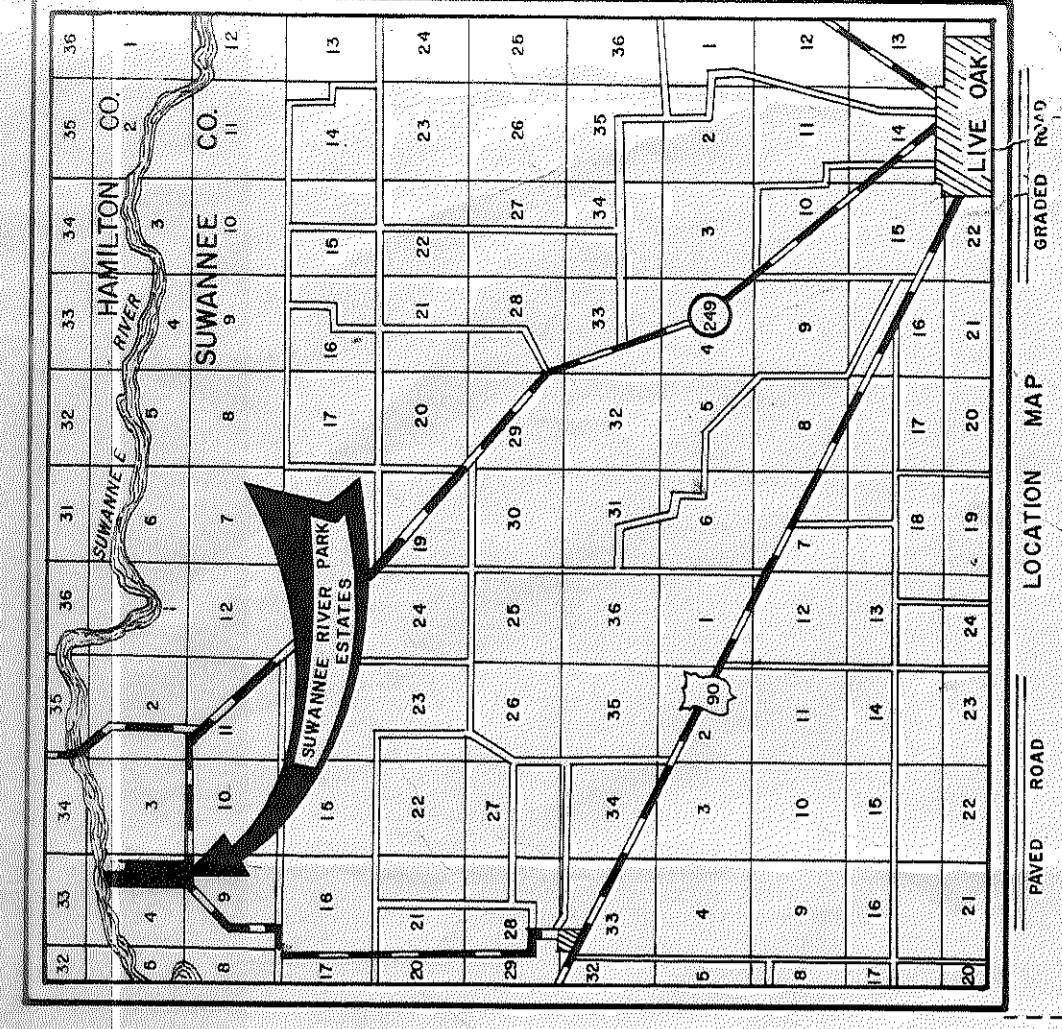
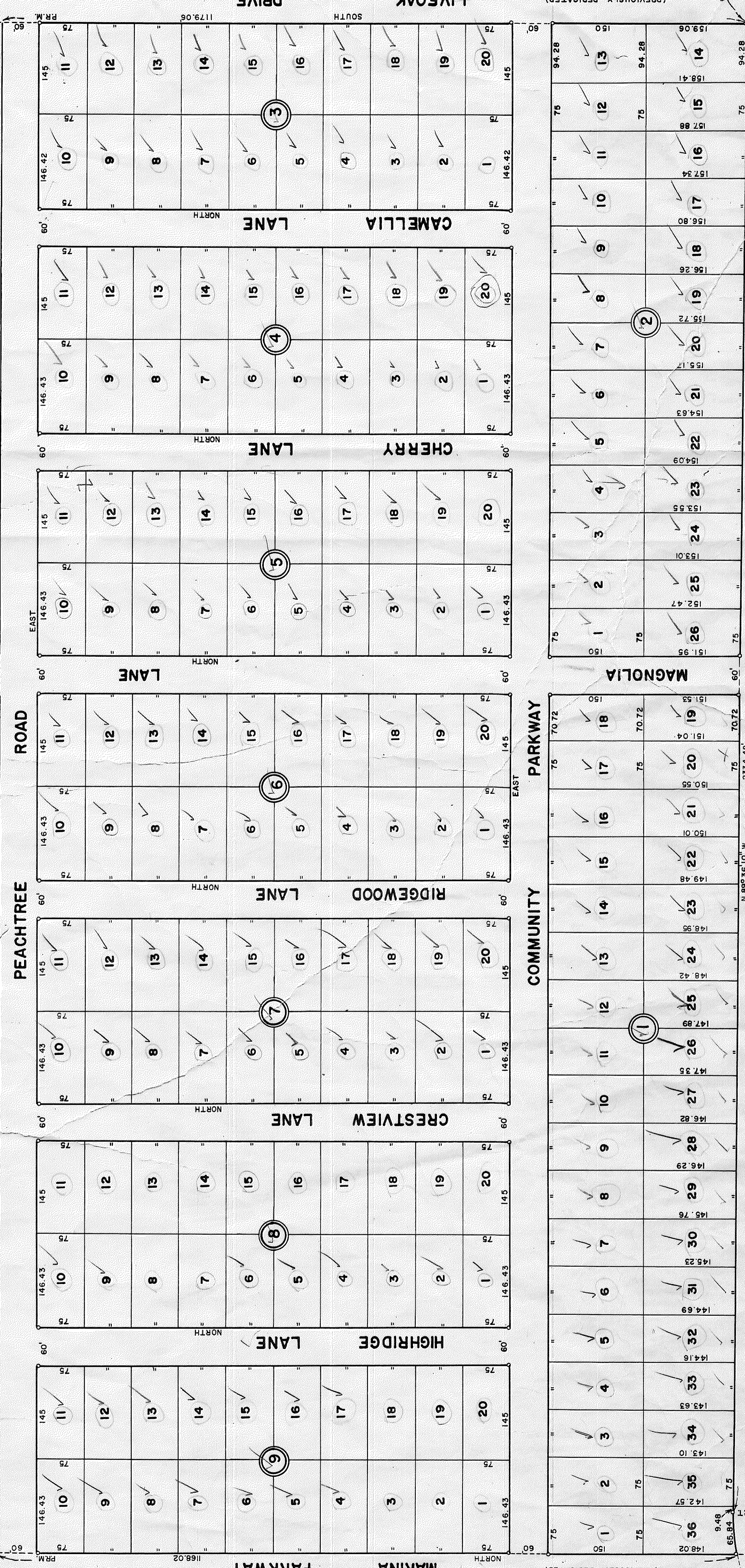
Suwannee River Park Estates Unit 3 1 of 3

SUWANNEE RIVER PARK ESTATES

UNIT NO. 3
SUWANNEE COUNTY, FLORIDA
SHEET 1 OF 3 SHEETS

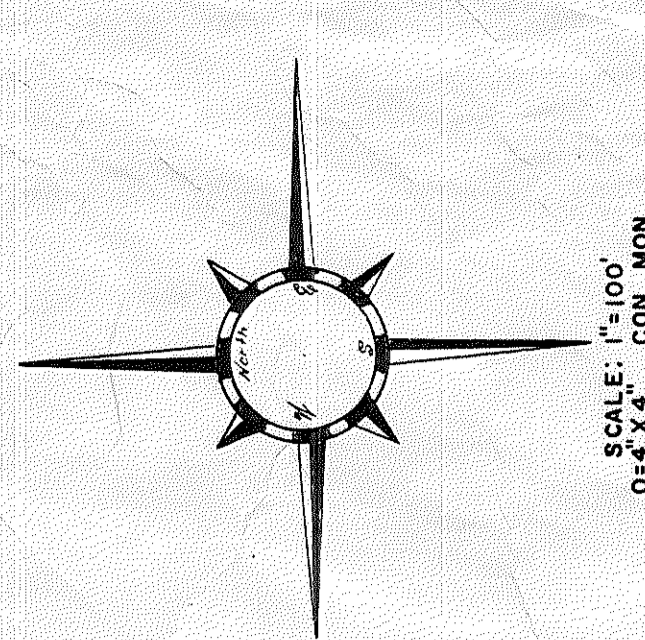
DESCRIPTION: A PORTION OF SECTION 4, TOWNSHIP 1 SOUTH, RANGE 12 EAST, SUWANNEE COUNTY, FLORIDA, BEING MORE PARTICULARLY DESCRIBED AS FOLLOWS: COMMENCING AT THE S.E. CORNER OF SECTION 4, TOWNSHIP 1 SOUTH, RANGE 12 EAST, THENCE N. 89° 31' 51" W. ALONG THE SOUTH BOUNDARY OF SAID SECTION 193.32 FT., THENCE NORTH 37.51 FT. TO A POINT IN THE NORTH RIGHT-OF-WAY LINE OF A PAVED COUNTY ROAD CALLED STEPHEN FOSTER DRIVE (60 FT. WIDE), FOR THE POINT OF BEGINNING. FROM THE POINT OF BEGINNING THUS DESCRIBED RUN N. 89° 36' 10" W. ALONG SAID NORTH RIGHT-OF-WAY LINE 2334.48 FT. TO A POINT ON SAID CURVED RIGHT-OF-WAY LINE HAVING A DELTA ANGLE OF 47° 26' 11" AND A RADIUS OF 361.68 FT., THENCE SOUTHWESTERLY ALONG THE ARC OF SAID CURVED RIGHT-OF-WAY LINE 65.64 FT. TO A POINT ON SAID CURVED RIGHT-OF-WAY LINE, THENCE NORTH 3152.67 FT., THENCE N. 89° 26' 10" W. 61.08 FT., THENCE N. 47° 17' 28" W. ALONG THE NORTHEASTERLY BOUNDARY OF LOT 49, BLOCK 18, OF SUWANNEE RIVER PARK ESTATES UNIT NO. 1 AS RECORDED IN THE PUBLIC RECORDS OF SAID SUWANNEE COUNTY, 213 FT., MORE OR LESS, TO THE WATERS EDGE OF THE SUWANNEE RIVER, THENCE NORTHEASTERLY AND SOUTHEASTERLY ALONG THE WATERS EDGE OF SAID RIVER TO AN INTERSECTION WITH THE WEST BOUNDARY OF LOT 14, BLOCK 14, OF SUWANNEE RIVER PARK ESTATES UNIT NO. 2 AS RECORDED IN THE PUBLIC RECORDS OF SAID SUWANNEE COUNTY, THENCE S. 13° 46' 01" W. ALONG THE WEST BOUNDARY OF SAID LOT 14, BLOCK 14, A DISTANCE OF 197 FT., MORE OR LESS, TO THE S.W. CORNER OF SAID LOT, THENCE S. 12° 57' 02" E. 67.17 FT., THENCE SOUTH 1024.37 FT., THENCE EAST 1054.28 FT., THENCE SOUTH 2439.06 FT. TO THE POINT OF BEGINNING.

JOHN SHEET NO. 2



SUWANNEE RIVER PARK ESTATES UNIT NO. 1

SUWANNEE RIVER PARK ESTATES UNIT NO. 2



PREPARED BY
MARION ENGINEERING ASSOCIATES, INC.
220 N. MAGNOLIA ST.
OCALA, FLORIDA
JANUARY, 1982

NOTE:
ALL DISTANCES SHOWN ALONG CURVED
LOT LINES ARE ARC DISTANCES

S.E. COR. OF
SEC. 4, T. 1 S., R. 12 E.
S 89° 31' 51" E
193.32'
S 89° 31' 51" E

N.E. COR. OF
SEC. 9, T. 1 S., R. 12 E.

THIS CERTIFIES THAT THIS PLAT WAS PRESENTED TO THE BOARD OF COUNTY COMMISSIONERS OF SUWANNEE COUNTY, FLORIDA AND APPROVED BY THEM FOR RECORD ON THE 21ST DAY OF February, A.D., 1982.

ATTEST: *Heather G. Starnes*
CLERK OF THE CIRCUIT COURT

Leonard F. Starnes
CHAIRMAN

STATE OF FLORIDA
COUNTY OF MARION

BEFORE ME THIS DAY, PERSONALLY APPEARED WILLIAM T. MOORE AND EDMUND L. WOOD, VICE PRESIDENT AND SECRETARY RESPECTIVELY OF SUWANNEE RIVER HOMESTIES, INC., FLORIDA CORPORATION, AND ACKNOWLEDGED BEFORE ME THAT THEY EXECUTED THE DEDICATION HEREBY SHOWN FOR THE USES AND PURPOSES THEREIN STATED ON BEHALF OF SAID SUWANNEE RIVER HOMESTIES, INC. AS ITS FREE ACT AND DEED AND HAVE BEEN DULY AUTHORIZED SO TO DO BY THE BOARD OF DIRECTORS THEREOF.

WITNESS MY HAND AND OFFICIAL SEAL AT Ocala, County of Marion, State of Florida, THIS 21ST DAY OF February, A.D., 1982.

MY COMMISSION EXPIRES: December 1, 1983

William T. Moore
WILLIAM T. MOORE, VICE PRESIDENT

Edmund L. Wood
EDMUND L. WOOD, VICE PRESIDENT

STATE OF FLORIDA
COUNTY OF MARION

THE UNDERSIGNED CORPORATION, WHICH IS DULY ORGANIZED UNDER THE LAWS OF THE STATE OF FLORIDA AND THE OWNER OF THE REAL ESTATE INCLUDED IN THIS PLAT DOES HEREBY AUTHORIZE THE SAME TO BE RECORDED IN THE PUBLIC RECORDS SUWANNEE COUNTY, FLORIDA, AND DOES HEREBY DEDICATE TO THE PUBLIC, FOREVER, THE STREETS SHOWN HEREON.

WITNESS WHEREOF SAID CORPORATION HAS CAUSED ITS SEAL TO BE AFFIXED BY THE UNDERSIGNED OFFICIALS, DULY AUTHORIZED BY THE BOARD OF DIRECTORS THIS 21ST DAY OF February, A.D. 1982.

SIGNED, SEALED, AND DELIVERED IN THE PRESENCE OF:

Carl E. Brown
WITNESS

I, LAVARRAH A. SESSIONS, CLERK OF CIRCUIT COURT OF SUWANNEE COUNTY, FLORIDA DO HEREBY CERTIFY THAT THIS FOREGOING PLAT CONFORMS TO THE PROVISIONS OF CHAPTER 177, FLORIDA STATUTES, WAS FILED IN MY OFFICE FOR RECORD ON THE 21ST DAY OF February, A.D., 1982, AND RECORDED IN THE PUBLIC RECORDS OF SAID COUNTY ON THE 21ST DAY OF February, A.D., 1982, IN PLAT BOOK 1 PAGES 1-3.