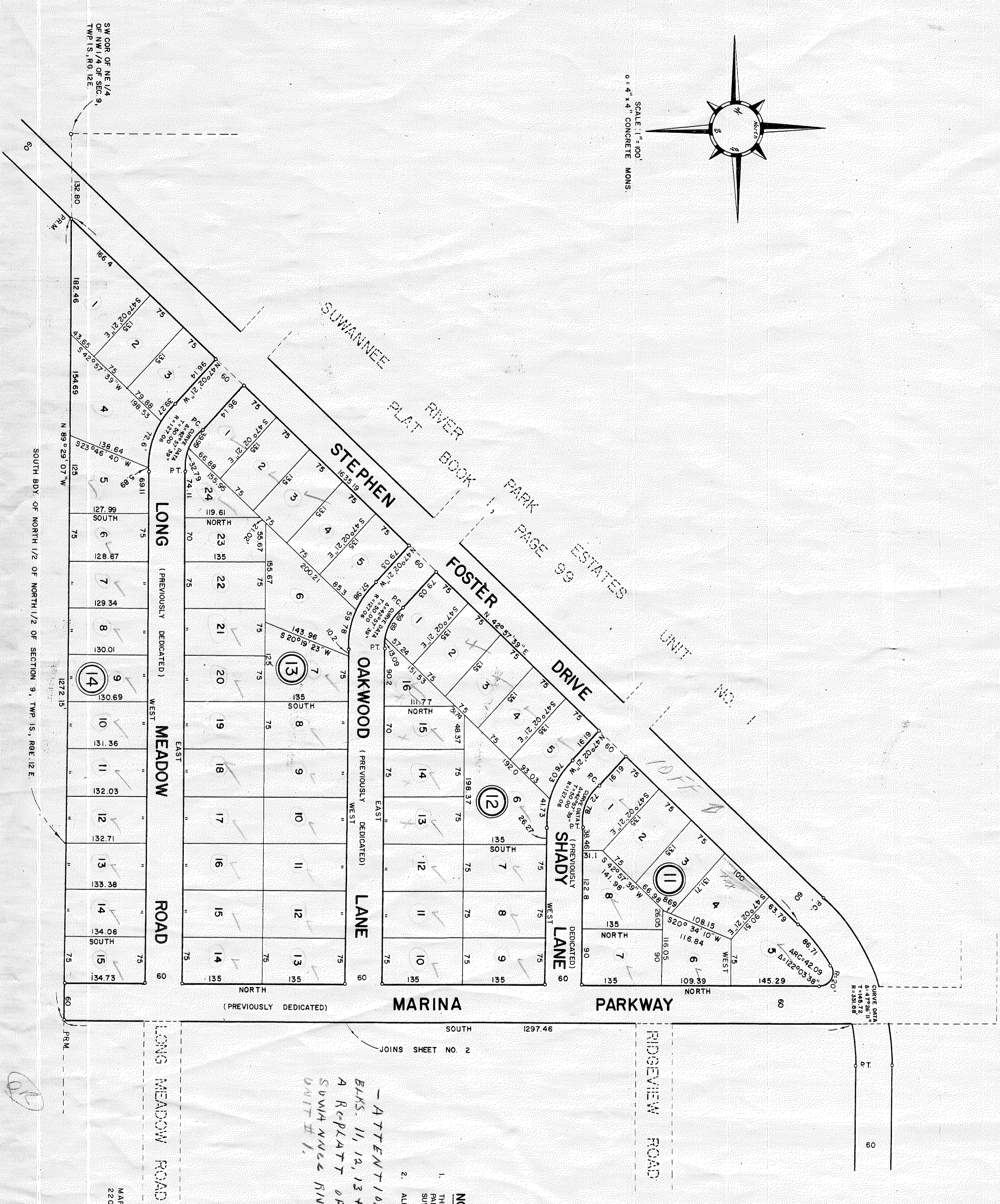
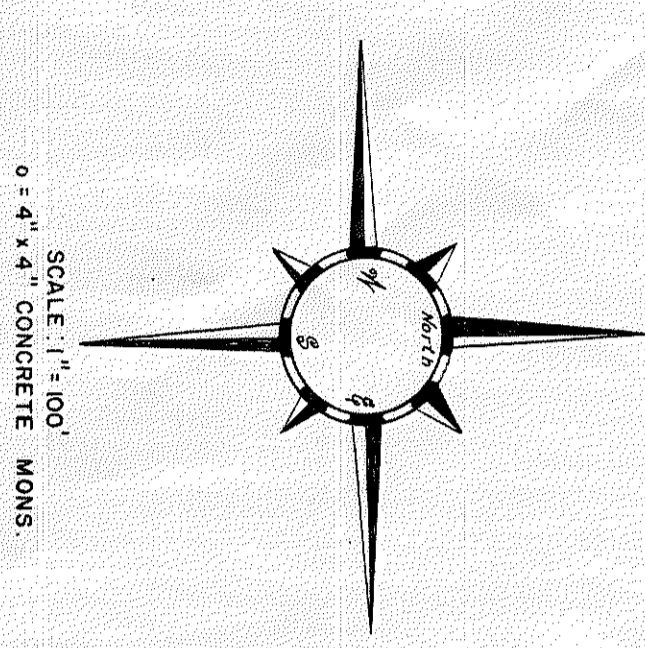


SUWANNEE RIVER MOBILE ESTATES

SUWANNEE COUNTY, FLORIDA
SHEET 3 OF 3 SHEETS



*ATTENTION - see attached log
BLKS 11, 12, 13 + 1/4 OF THIS SUB. DIV. IS
A REPLATT OF BLKS. 1, 2, 3, 4 OF
SUWANNEE RIVER PARK ESTATES.
DUNIT II.*

- NOTES:**
1. THE BLOCKS SHOWN ON THIS SHEET WERE ORIGINALLY BLOCKS 1, 2, 3 AND 4 OF SUWANNEE RIVER PARK ESTATES UNIT NO. 1 AS RECORDED IN PLAT BOOK 11, PAGE 99 OF THE PUBLIC RECORDS OF SUWANNEE COUNTY, FLORIDA.
 2. ALL DISTANCES SHOWN ALONG CURVED LOT LINES ARE ARC DISTANCES.

PREPARED BY
MARION ENGINEERING ASSOCIATES, INC.
220 N. MAGNOLIA STREET, OCALA, FLORIDA
OCTOBER, 1982