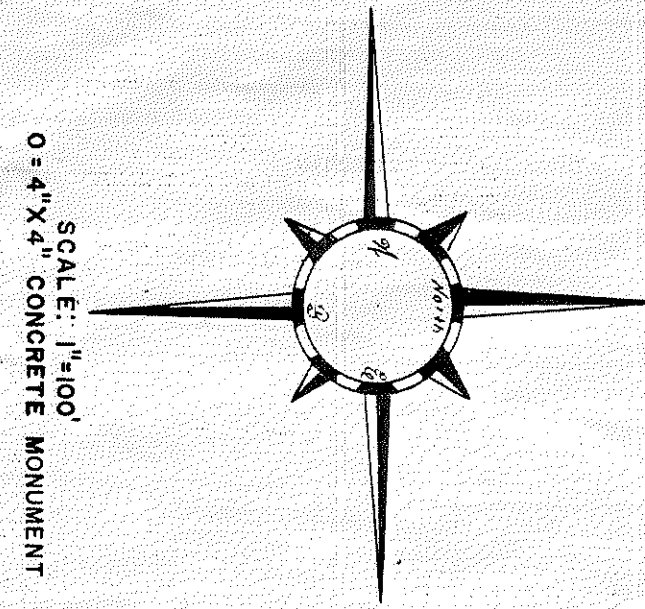
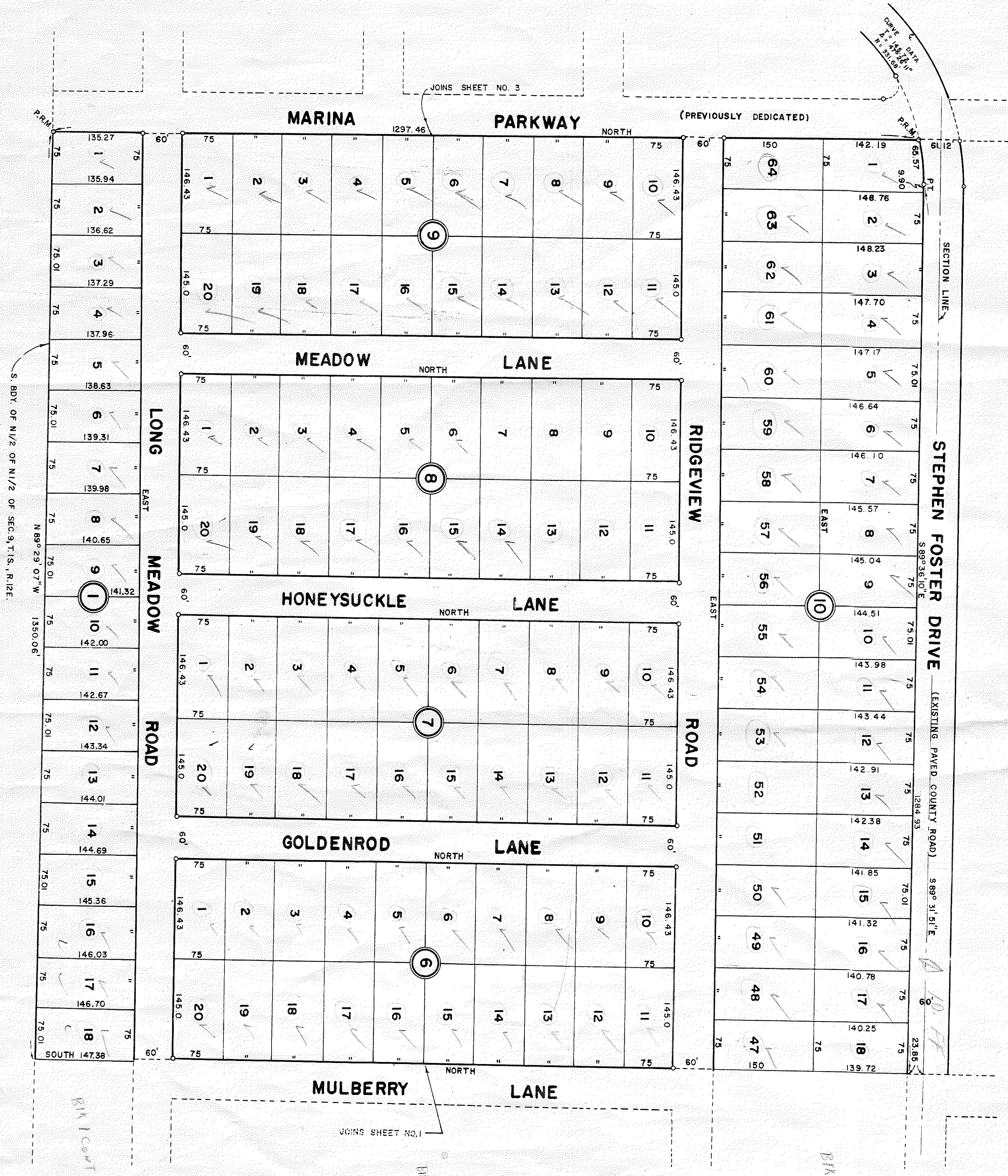


SUWANNEE RIVER MOBILE ESTATES

SUWANNEE COUNTY, FLORIDA
SHEET 2 OF 3 SHEETS



NOTE:
ALL DISTANCES SHOWN ALONG CURVED LOT LINES ARE ARC DISTANCES

PREPARED BY
MARION ENGINEERING ASSOCIATES, INC.
220 N. MAGNOLIA ST.
OCALA, FLORIDA
OCTOBER, 1982

M/E 83(B) 91-2