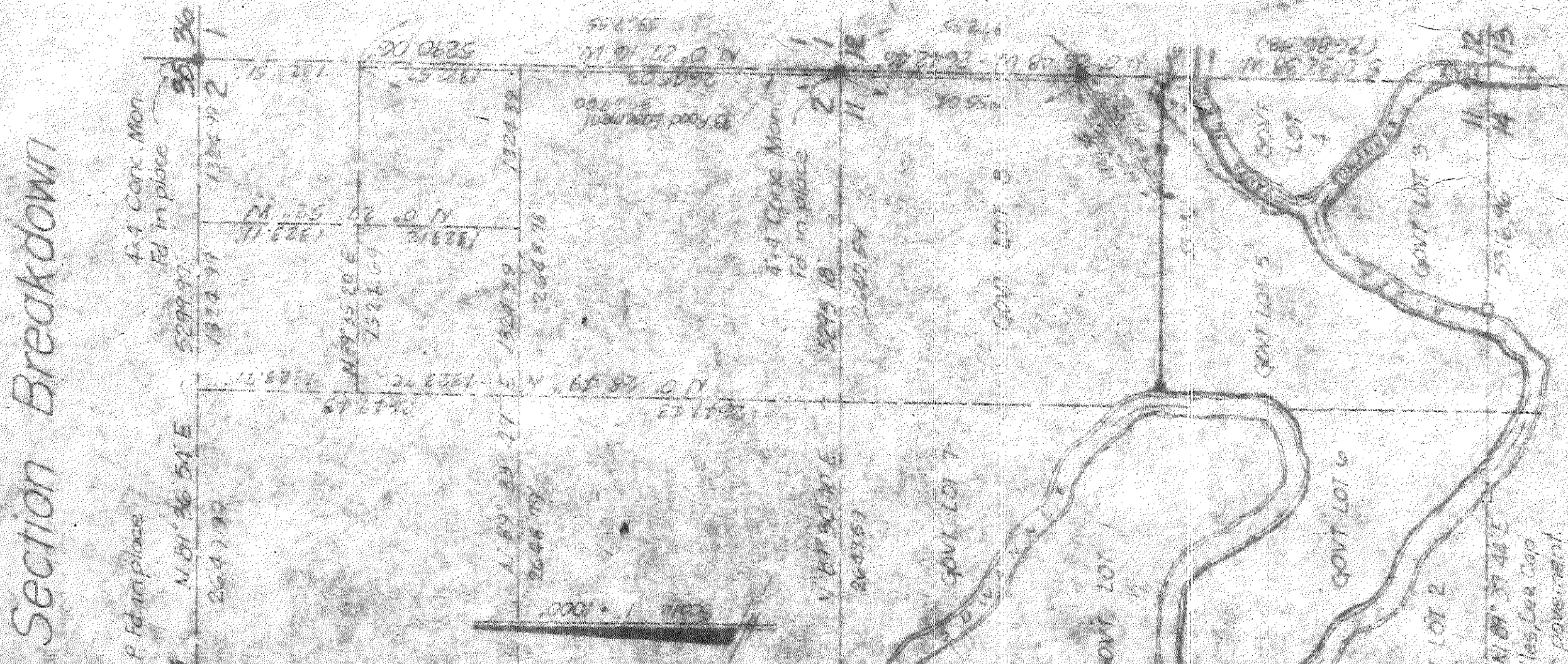
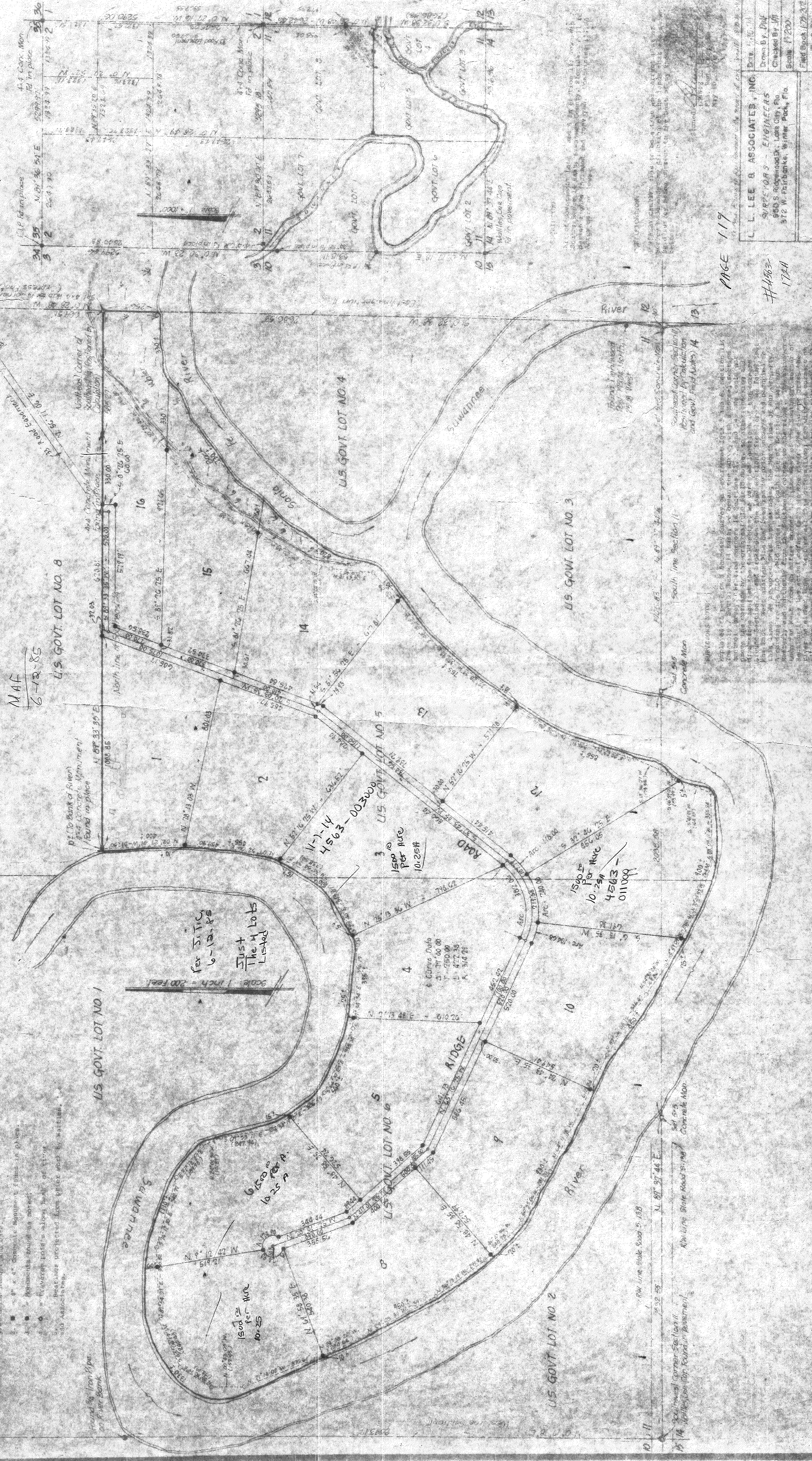


SUWANNEE FOREST

AN UNRECORDED SUBDIVISION IN
SECTION 11, TOWNSHIP 7 SOUTH, RANGE 14 EAST
SUWANNEE COUNTY, FLORIDA



Section Breakdown



MAF
6-12-85

U.S. GOVT. LOT NO. 8

U.S. GOVT. LOT NO. 1

U.S. GOVT. LOT NO. 5

U.S. GOVT. LOT NO. 3

U.S. GOVT. LOT NO. 4

for 3.14
9-12-85
Just
The 4 Lots
Locked

Scale: 1 inch = 200 feet

1. All bearings and distances were checked by the Surveyor.
2. All bearings and distances were checked by the Surveyor.
3. All bearings and distances were checked by the Surveyor.
4. All bearings and distances were checked by the Surveyor.
5. All bearings and distances were checked by the Surveyor.
6. All bearings and distances were checked by the Surveyor.
7. All bearings and distances were checked by the Surveyor.
8. All bearings and distances were checked by the Surveyor.
9. All bearings and distances were checked by the Surveyor.
10. All bearings and distances were checked by the Surveyor.
11. All bearings and distances were checked by the Surveyor.
12. All bearings and distances were checked by the Surveyor.
13. All bearings and distances were checked by the Surveyor.
14. All bearings and distances were checked by the Surveyor.
15. All bearings and distances were checked by the Surveyor.
16. All bearings and distances were checked by the Surveyor.

L. LEE & ASSOCIATES, INC.	DATE: 11-11-85
SURVEYORS ENGINEERS	DRAWN BY: DJW
5835 S. RIDGEWAY, LAKELAND, FLA.	CHECKED BY: JFW
572 W. PALMBOULEVARD, SIMPSONVILLE, FLA.	SCALE: 1"=200'
	FIELD BOOK: 128, 129
	FILE: 5-17-85
	REVERSE SIDE

#4563-1744

(11-30-85) Revised to divide and show lots 1 thru 16