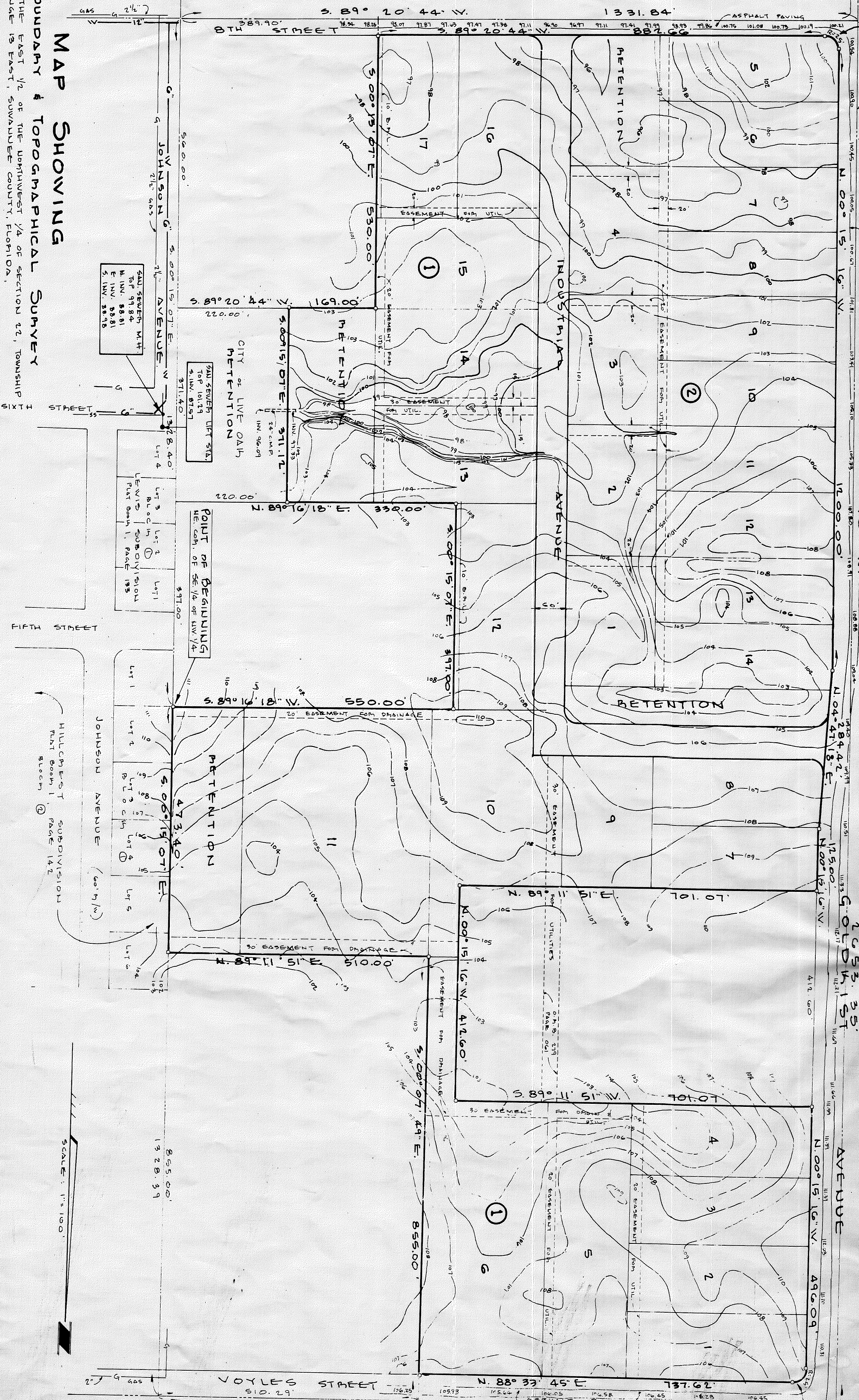


Suwannee County Industrial Park

# SUWANNEE COUNTY INDUSTRIAL PARK

SITUATED IN THE EAST 1/2 OF THE NORTHWEST 1/4 OF SECTION 12, TOWNSHIP 2 SOUTH, RANGE 13 EAST, SUWANNEE COUNTY, FLORIDA. CITY OF LIVE OAK, FLORIDA.



**MAP SHOWING**  
**BOUNDARY & TOPOGRAPHICAL SURVEY**  
 PART OF THE EAST 1/2 OF THE NORTHWEST 1/4 OF SECTION 12, TOWNSHIP 2 SOUTH, RANGE 13 EAST, SUWANNEE COUNTY, FLORIDA.

I HEREBY CERTIFY THAT THIS SURVEY MEETS THE MINIMUM TECHNICAL STANDARDS SET FORTH BY THE FLORIDA BOARD OF LAND SURVEYORS.

*J. Sherman Fish*  
 J. SHERMAN FISH & ASSOCIATES  
 LAND SURVEYORS  
 PHONE: 304.362.4529

SUWANNEE COUNTY INDUSTRIAL PARK	
FORM: SUWANNEE COUNTY DEVELOPMENT	DATE: 10/21/85
SCALE: 1" = 100'	APPROVED BY: [Signature]
DATE: 10/21/85	DRAWN BY: J.S.F.
PROJECT: 580 LIVE OAK, FLA 32000	PHONE: 304.362.4529
DRAWING NUMBER: 5-1A1-84	

PLAT Book 1 Page 338  
 SHEET 2 of 2