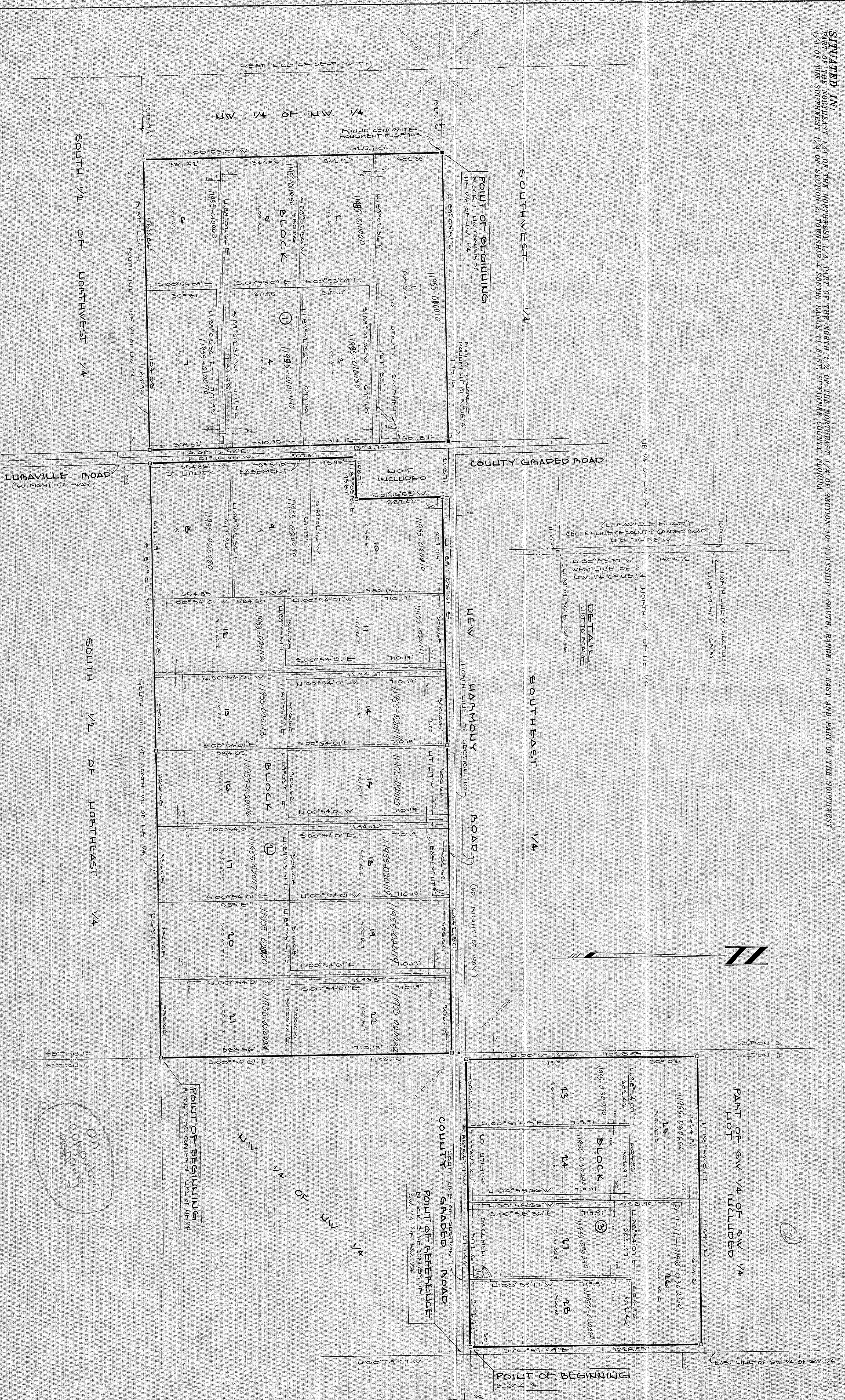


J.P.R.N.E. WALK

SITUATED IN: PART OF THE NORTHWEST 1/4 OF THE NORTHWEST 1/4, PART OF THE NORTH 1/2 OF THE NORTHWEST 1/4 OF SECTION 10, TOWNSHIP 4 SOUTH, RANGE 11 EAST AND PART OF THE SOUTHWEST 1/4 OF THE SOUTHWEST 1/4 OF SECTION 2, TOWNSHIP 4 SOUTH, RANGE 11 EAST, STANWATER COUNTY, FLORIDA.



11955

11955001

ON Computer Mapping

POINT OF BEGINNING
BLOCK 1 SEE COMPLETION OF
11/21/87 1/4

POINT OF REFERENCE
BLOCK 3 SEE COMPLETION OF
SW 1/4 OF SW 1/4

POINT OF BEGINNING
BLOCK 3