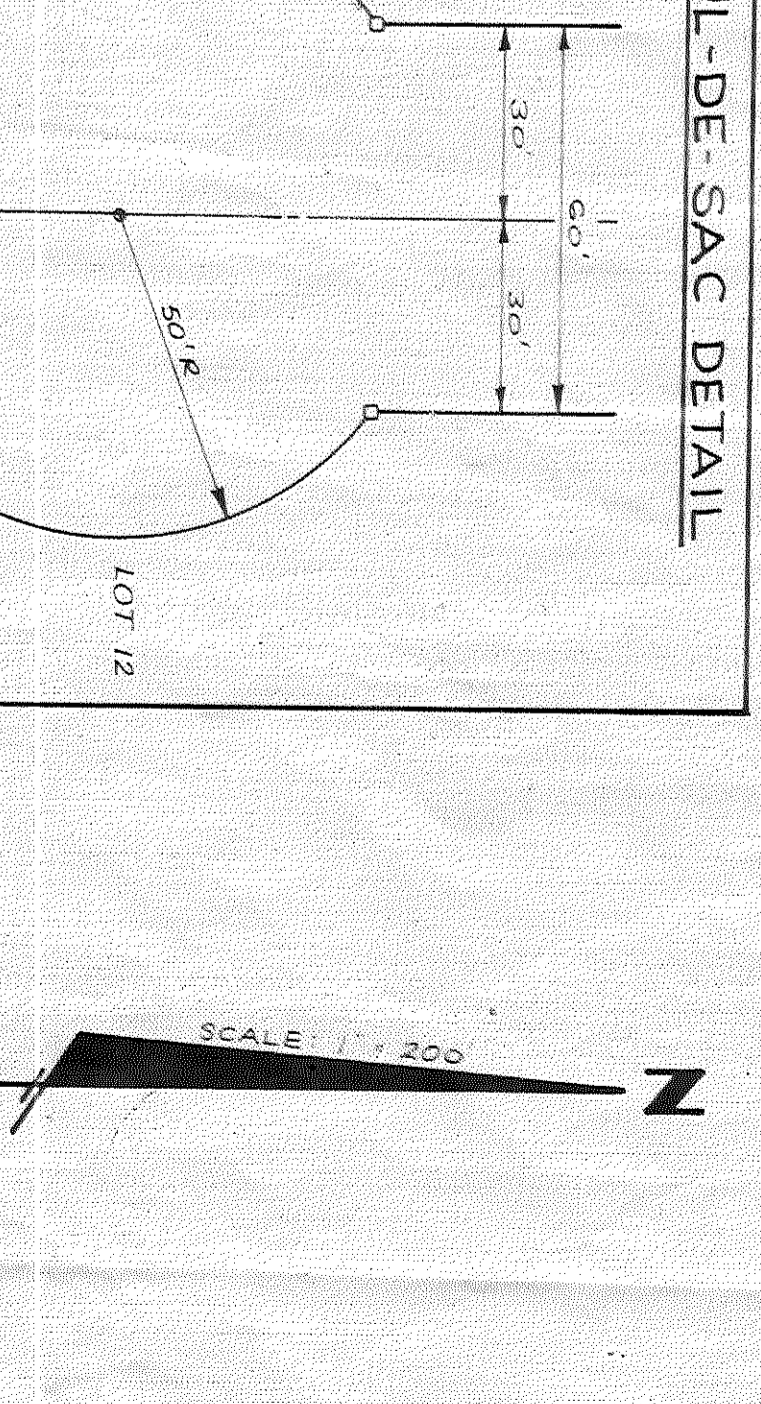
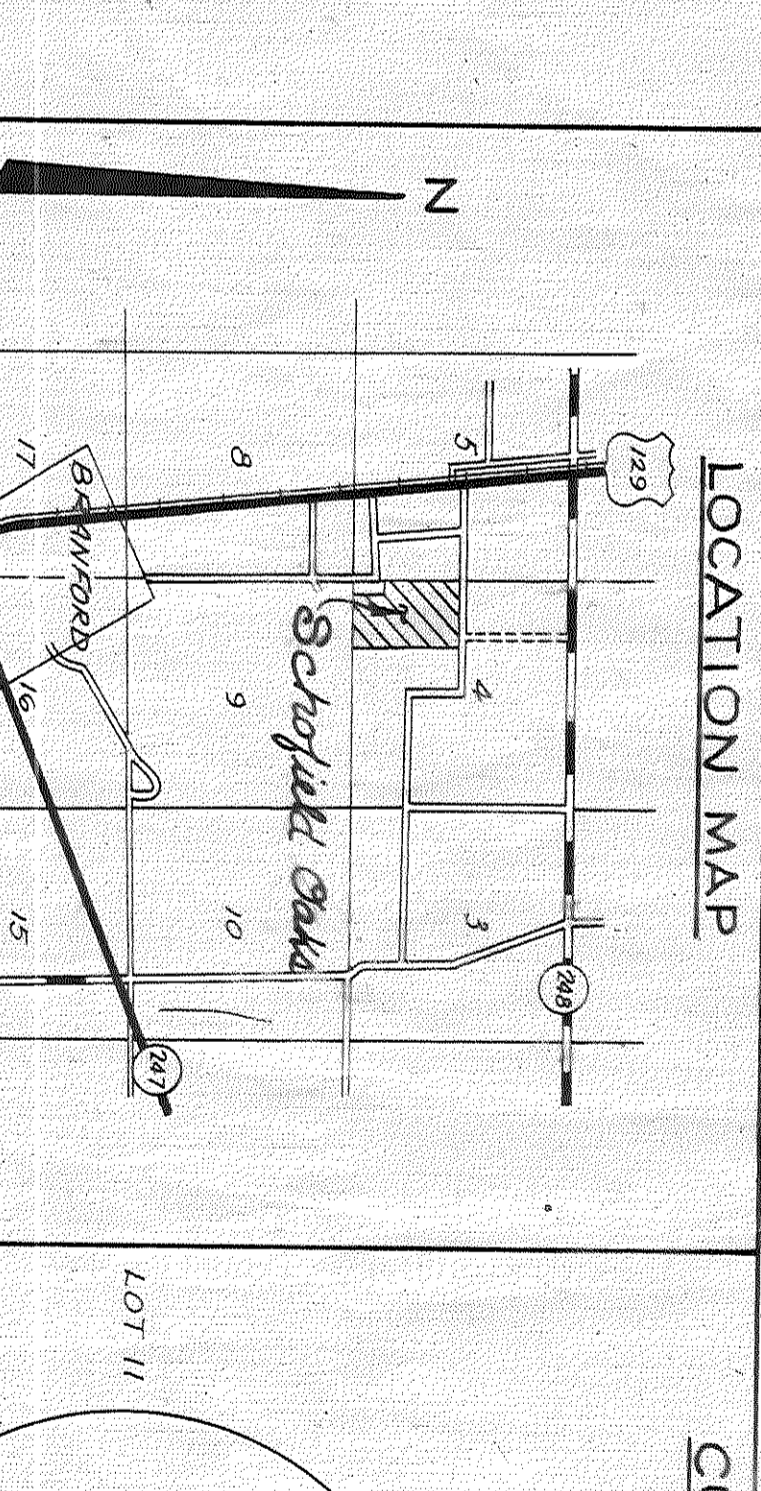
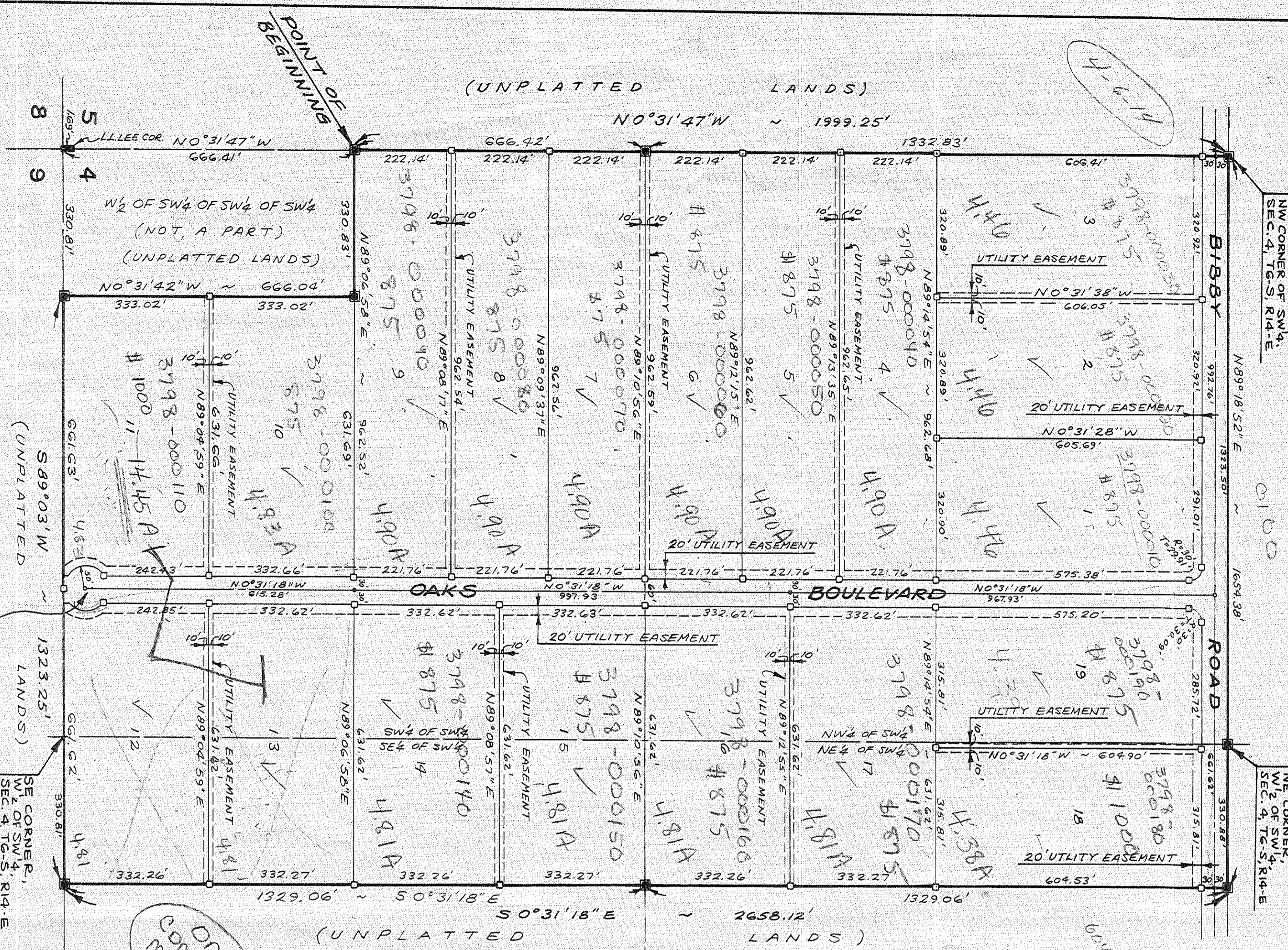


Schofield Oaks

Schofield Oaks

A SUBDIVISION IN SECTION 4, TOWNSHIP 6 SOUTH, RANGE 14 EAST SUWANNEE COUNTY, FLORIDA

(UNPLATTED LANDS)



DESCRIPTION:

COMMENCE AT THE SOUTHWEST CORNER OF SECTION 4, TOWNSHIP 6 SOUTH, RANGE 14 EAST, SUWANNEE COUNTY, FLORIDA, AND RUN N 0° 31' 47" W ALONG THE WEST LINE OF SAID SECTION 666.41 FEET TO THE POINT-OF-BEGINNING, THENCE CONTINUE N 0° 31' 47" W ALONG SAID WEST LINE 666.41 FEET TO THE POINT-OF-BEGINNING, THENCE S 89° 03' 18" E 265.42 FEET TO THE POINT-OF-BEGINNING, THENCE S 89° 03' 18" E ALONG SAID SOUTH LINE 666.41 FEET TO THE POINT-OF-BEGINNING, BEING THE SAME AS THE W 1/2 OF THE SW 1/4 LESS AND EXCEPT THE W 1/2 OF THE SW 1/4 OF SAID SECTION AND THE W 1/2 OF THE SW 1/4 ALL LOTS AND BEING IN SECTION 4, TOWNSHIP 6 SOUTH, RANGE 14 EAST, SUWANNEE COUNTY, FLORIDA.

DEDICATION:

KNOW ALL MEN BY THESE PRESENTS THAT MAURICE R. SCHOFIELD AND FRANCES V. SCHOFIELD, HIS WIFE, AS OWNERS, AND THE NORTH FLORIDA PRODUCTION CREDIT ASSOCIATION, LIVE OAK FLORIDA, AS MORTGAGEE, HAVE CAUSED THE LANDS HEREBY DESCRIBED TO BE SURVEYED, Laid Out, SUBDIVIDED AND PLATTED TO BE KNOWN AS "SCHOFIELD OAKS" AND THAT THE ROADS AND EASEMENTS ARE HEREBY DEDICATED TO THE PUBLIC.

OWNERS:

SIGNED Maurice R. Schofield WITNESS Francis V. Schofield
 SIGNED Francis V. Schofield WITNESS Maurice R. Schofield

DATE:

DATE January 4, 1980

MORTGAGEE: NORTH FLORIDA PRODUCTION CREDIT ASSOCIATION

SIGNED:

SIGNED Charles R. Thomas, Pres. WITNESS Francis V. Schofield
 SIGNED Walter J. Annette, Vice Pres. WITNESS Maurice R. Schofield

DATE:

DATE January 4, 1980

DEDICATION CONT:

ALSO KNOW ALL MEN BY THESE PRESENTS THAT LEON D. HATCH, JR. AND DEBRA H. HATCH, HIS WIFE AND ANNE GOBLE FULLER, AS OWNERS OF CERTAIN PARCELS OF LAND AND ANNE GOBLE FULLER, AS OWNER OF A SURVEYED, Laid Out, SUBDIVIDED AND PLATTED TO BE KNOWN AS "SCHOFIELD OAKS" AND THAT THE ROADS AND EASEMENTS ARE HEREBY DEDICATED TO THE PUBLIC.

OWNERS:

SIGNED Leon D. Hatch, Jr. WITNESS Debra H. Hatch
 SIGNED Debra H. Hatch WITNESS Leon D. Hatch, Jr.
 SIGNED Anne Goble Fuller WITNESS Francis V. Schofield

DATE:

DATE January 3, 1980

ACKNOWLEDGEMENT:

ON THIS 03 DAY OF January, A.D. 1980, THE FOREGOING INSTRUMENT WAS ACKNOWLEDGED BEFORE ME BY LEON D. HATCH, JR. AND DEBRA H. HATCH, HIS WIFE.

SIGNED:

SIGNED Francis V. Schofield NOTARY PUBLIC, STATE OF FLORIDA
 MY COMMISSION EXPIRES 1982

ACKNOWLEDGEMENT:

STATE OF FLORIDA
 COUNTY OF DADE
 ON THIS 03 DAY OF January, A.D. 1980, THE FOREGOING INSTRUMENT WAS ACKNOWLEDGED BEFORE ME BY ANNE GOBLE FULLER.

SIGNED:

SIGNED Francis V. Schofield NOTARY PUBLIC, STATE OF FLORIDA
 MY COMMISSION EXPIRES 1982

ACKNOWLEDGEMENT:

STATE OF FLORIDA
 COUNTY OF SUWANNEE
 ON THIS 03 DAY OF January, A.D. 1980, THE FOREGOING INSTRUMENT WAS ACKNOWLEDGED BEFORE ME BY MAURICE R. SCHOFIELD AND FRANCES V. SCHOFIELD, HIS WIFE.

SIGNED:

SIGNED Maurice R. Schofield NOTARY PUBLIC, STATE OF FLORIDA
 MY COMMISSION EXPIRES 1982

ACKNOWLEDGEMENT:

STATE OF FLORIDA
 COUNTY OF SUWANNEE
 ON THIS 03 DAY OF January, A.D. 1980, THE FOREGOING INSTRUMENT WAS ACKNOWLEDGED BEFORE ME BY CHARLES R. THOMAS, PRES. AND WALTER J. ANNETTE, VICE PRES., OF THE NORTH FLORIDA PRODUCTION CREDIT ASSOCIATION, MORTGAGEE.

SIGNED:

SIGNED Charles R. Thomas NOTARY PUBLIC, STATE OF FLORIDA
 MY COMMISSION EXPIRES 1982

SURVEYOR'S CERTIFICATE:

I HEREBY CERTIFY THAT THIS PLAT IS A TRUE AND CORRECT REPRESENTATION OF THE LANDS SURVEYED AND SHOWN HEREON, THAT THE SURVEY WAS MADE UNDER MY RESPONSIBLE DIRECTION AND SUPERVISION, THAT PERMANENT REFERENCE MONUMENTS AND PERMANENT CONTROL POINTS HAVE BEEN PLACED AS SHOWN, AND THAT THE SURVEY DATA SHOWN HEREON COMPLIES WITH ALL THE REQUIREMENTS OF CHAPTER 177, FLORIDA STATUTES.

DATE:

DATE January 4, 1980 SIGNED W.C. Hale
 W.C. HALE, LAND SURVEYOR
 FLORIDA CERTIFICATE NO. 1519

APPROVED BY THE COUNTY COMMISSION

SUWANNEE COUNTY, FLORIDA:
 SIGNED Harold C. Hines, CHAIRMAN
 ATTEST Francis V. Schofield, CLERK

CERTIFICATE OF THE CLERK:

I HEREBY CERTIFY THAT THE FOREGOING PLAT HAVING BEEN DULY APPROVED BY THE COUNTY COMMISSION OF SUWANNEE COUNTY, FLORIDA, WAS ACCEPTED BY ME AND FILED FOR RECORD THIS 03 DAY OF January, A.D. 1980, IN PLAT BOOK 179 OF THE PUBLIC RECORDS OF SUWANNEE COUNTY, FLORIDA.

SIGNED:

SIGNED Francis V. Schofield CLERK OF COUNTY COURT
 SUWANNEE COUNTY, FLORIDA

PERMANENT REFERENCE MONUMENT 4"x4" CONCRETE MONUMENT FOUND 4"x4" CONCRETE MONUMENT SET P.C.D. SET (4"x4" CONC. MON. BURIED)

GRAPHIC SCALE: 1" = 200'