

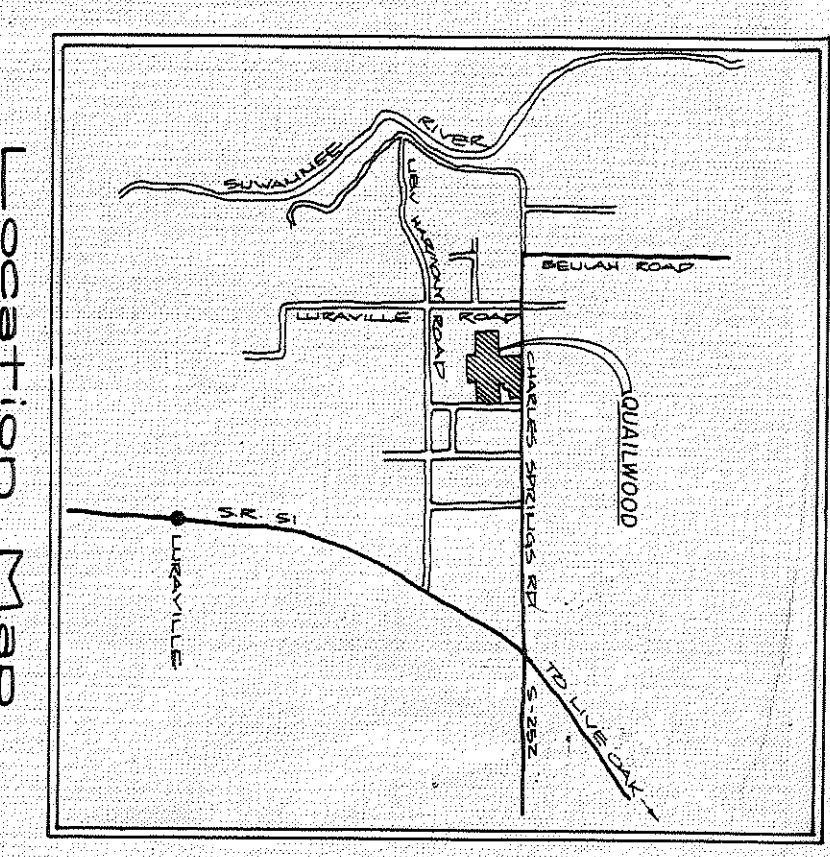
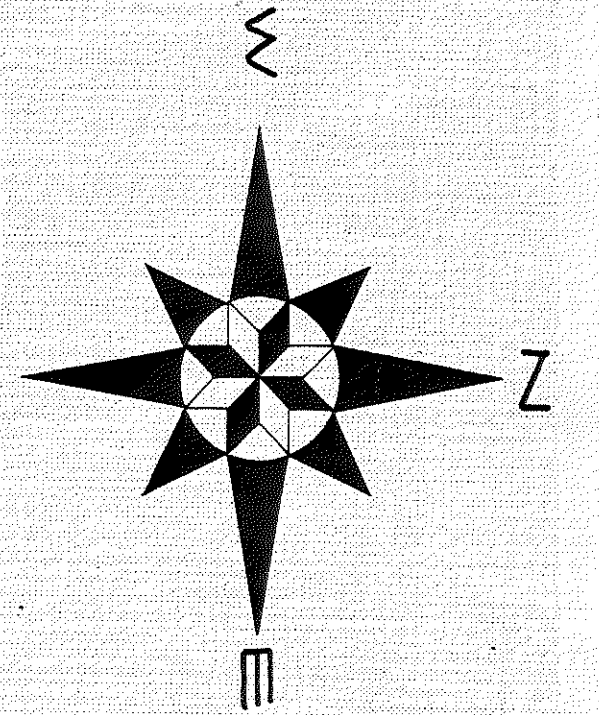
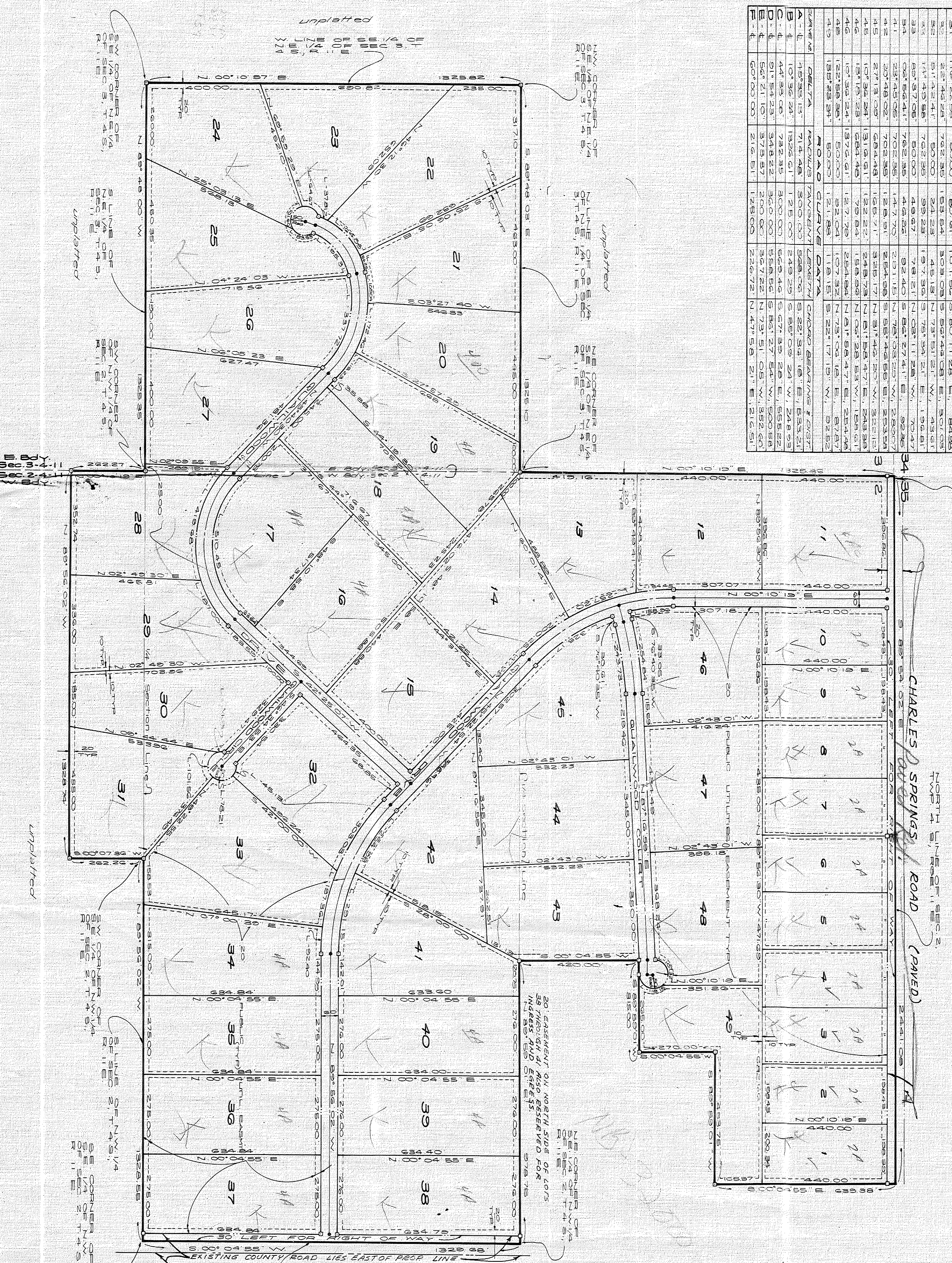
AP-08 1982
 Sold 29th Feb @ \$ 1,000 Per A/c
 \$ 1,200 (17150)
 \$ 1,000 (17150)
 \$ 1,200 (17150)
 \$ 1,000 (17150)

QUAILWOOD

A SUBDIVISION IN SECTIONS 2, 8, 3,
 TOWNSHIP 4 SOUTH, RANGE 11 EAST,
 SUWANNEE COUNTY, FLORIDA.

LOT CURVE DATA

LOT NO.	CURVE DATA
1	1.000000 1.000000 1.000000 1.000000
2	1.000000 1.000000 1.000000 1.000000
3	1.000000 1.000000 1.000000 1.000000
4	1.000000 1.000000 1.000000 1.000000
5	1.000000 1.000000 1.000000 1.000000
6	1.000000 1.000000 1.000000 1.000000
7	1.000000 1.000000 1.000000 1.000000
8	1.000000 1.000000 1.000000 1.000000
9	1.000000 1.000000 1.000000 1.000000
10	1.000000 1.000000 1.000000 1.000000
11	1.000000 1.000000 1.000000 1.000000
12	1.000000 1.000000 1.000000 1.000000
13	1.000000 1.000000 1.000000 1.000000
14	1.000000 1.000000 1.000000 1.000000
15	1.000000 1.000000 1.000000 1.000000
16	1.000000 1.000000 1.000000 1.000000
17	1.000000 1.000000 1.000000 1.000000
18	1.000000 1.000000 1.000000 1.000000
19	1.000000 1.000000 1.000000 1.000000
20	1.000000 1.000000 1.000000 1.000000
21	1.000000 1.000000 1.000000 1.000000
22	1.000000 1.000000 1.000000 1.000000
23	1.000000 1.000000 1.000000 1.000000
24	1.000000 1.000000 1.000000 1.000000
25	1.000000 1.000000 1.000000 1.000000
26	1.000000 1.000000 1.000000 1.000000
27	1.000000 1.000000 1.000000 1.000000
28	1.000000 1.000000 1.000000 1.000000
29	1.000000 1.000000 1.000000 1.000000
30	1.000000 1.000000 1.000000 1.000000
31	1.000000 1.000000 1.000000 1.000000
32	1.000000 1.000000 1.000000 1.000000
33	1.000000 1.000000 1.000000 1.000000
34	1.000000 1.000000 1.000000 1.000000
35	1.000000 1.000000 1.000000 1.000000
36	1.000000 1.000000 1.000000 1.000000
37	1.000000 1.000000 1.000000 1.000000
38	1.000000 1.000000 1.000000 1.000000
39	1.000000 1.000000 1.000000 1.000000
40	1.000000 1.000000 1.000000 1.000000
41	1.000000 1.000000 1.000000 1.000000
42	1.000000 1.000000 1.000000 1.000000
43	1.000000 1.000000 1.000000 1.000000
44	1.000000 1.000000 1.000000 1.000000
45	1.000000 1.000000 1.000000 1.000000
46	1.000000 1.000000 1.000000 1.000000
47	1.000000 1.000000 1.000000 1.000000
48	1.000000 1.000000 1.000000 1.000000
49	1.000000 1.000000 1.000000 1.000000
50	1.000000 1.000000 1.000000 1.000000
51	1.000000 1.000000 1.000000 1.000000
52	1.000000 1.000000 1.000000 1.000000
53	1.000000 1.000000 1.000000 1.000000
54	1.000000 1.000000 1.000000 1.000000
55	1.000000 1.000000 1.000000 1.000000
56	1.000000 1.000000 1.000000 1.000000
57	1.000000 1.000000 1.000000 1.000000
58	1.000000 1.000000 1.000000 1.000000
59	1.000000 1.000000 1.000000 1.000000
60	1.000000 1.000000 1.000000 1.000000



Legal Description:

A PORTION OF SECTIONS 2 AND 3, TOWNSHIP 4 SOUTH, RANGE 11 EAST, SUWANNEE COUNTY, FLORIDA, BEING MORE PARTICULARLY DESCRIBED AS SET FORTH IN THE SURVEY OF SAID SECTIONS 2 AND 3, MADE BY JACK MOTT, SURVEYOR, AND HEREBY DECIDED TO THE PUBLIC FOREVER BY THE BOARD OF COUNTY COMMISSIONERS OF SUWANNEE COUNTY, FLORIDA, ON BEHALF OF THE CORPORATION.

Adoption and Dedication:

SUWANNEE PROPERTIES, INC., A FLORIDA CORPORATION, DOES HEREBY CERTIFY THAT IT IS THE OWNER OF QUAILWOOD, AS DESCRIBED HEREON AND HEREBY DEDICATE TO THE PUBLIC FOREVER THE STREETS AND EASEMENTS SHOWN ON THIS PLAT OF QUAILWOOD.

Acknowledgement:

THE FOREGOING INSTRUMENT WAS ACKNOWLEDGED BEFORE ME THIS DAY OF APRIL, A.D. 1980 BY JACK MOTT, PRESIDENT OF SUWANNEE PROPERTIES, INC., ON BEHALF OF THE CORPORATION.

Suwannee County Commissioner's Approval:

APPROVED BY THE BOARD OF COUNTY COMMISSIONERS OF SUWANNEE COUNTY, FLORIDA THIS 15th DAY OF APRIL, A.D. 1980.

Suwannee County Clerk's Certificate of Filing:

THIS PLAT HAS BEEN FILED FOR RECORD AND RECORDED IN THE PUBLIC RECORDS OF SUWANNEE COUNTY, FLORIDA THIS 15th DAY OF APRIL, A.D. 1980.

Surveyor's Certificate:

I DO HEREBY CERTIFY THAT THIS PLAT OF QUAILWOOD IS A TRUE AND CORRECT REPRESENTATION OF THE HERSON AS DESCRIBED LANDS ACCORDING TO A SURVEY MADE UNDER MY RESPONSIBLE DIRECTION AND SUPERVISION AND THAT THE REMANENT REFERENCE POINTS (R.P.'S) AND PERMANENT POINTS (P.P.'S) HAVE BEEN SET AS CALLED FOR UNDER CHAPTER 177, SECTION 091 (7.48) LAWS OF FLORIDA AND THAT THE SURVEY DATA COMPLES WITH ALL THE REQUIREMENTS OF CHAPTER 177, FS 1979.

March 11, 1980
 36B
 37