

QUAIL HOLLOW

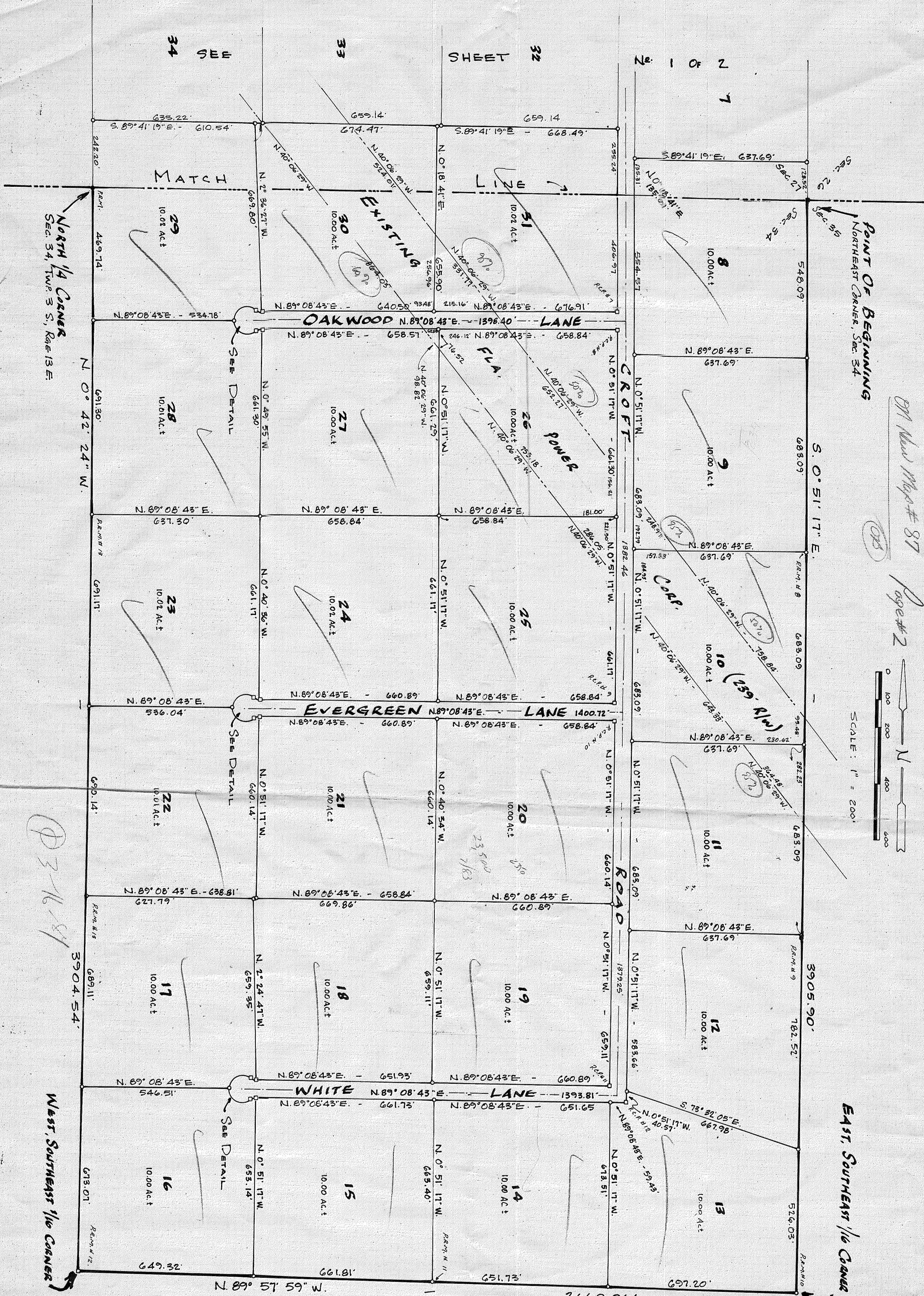
A SUBDIVISION IN SECTION 27, AND SECTION 34,
TOWNSHIP 3 SOUTH, RANGE 13 EAST,
SUWANNEE COUNTY, FLORIDA

No. S-78

Plat Map # 87

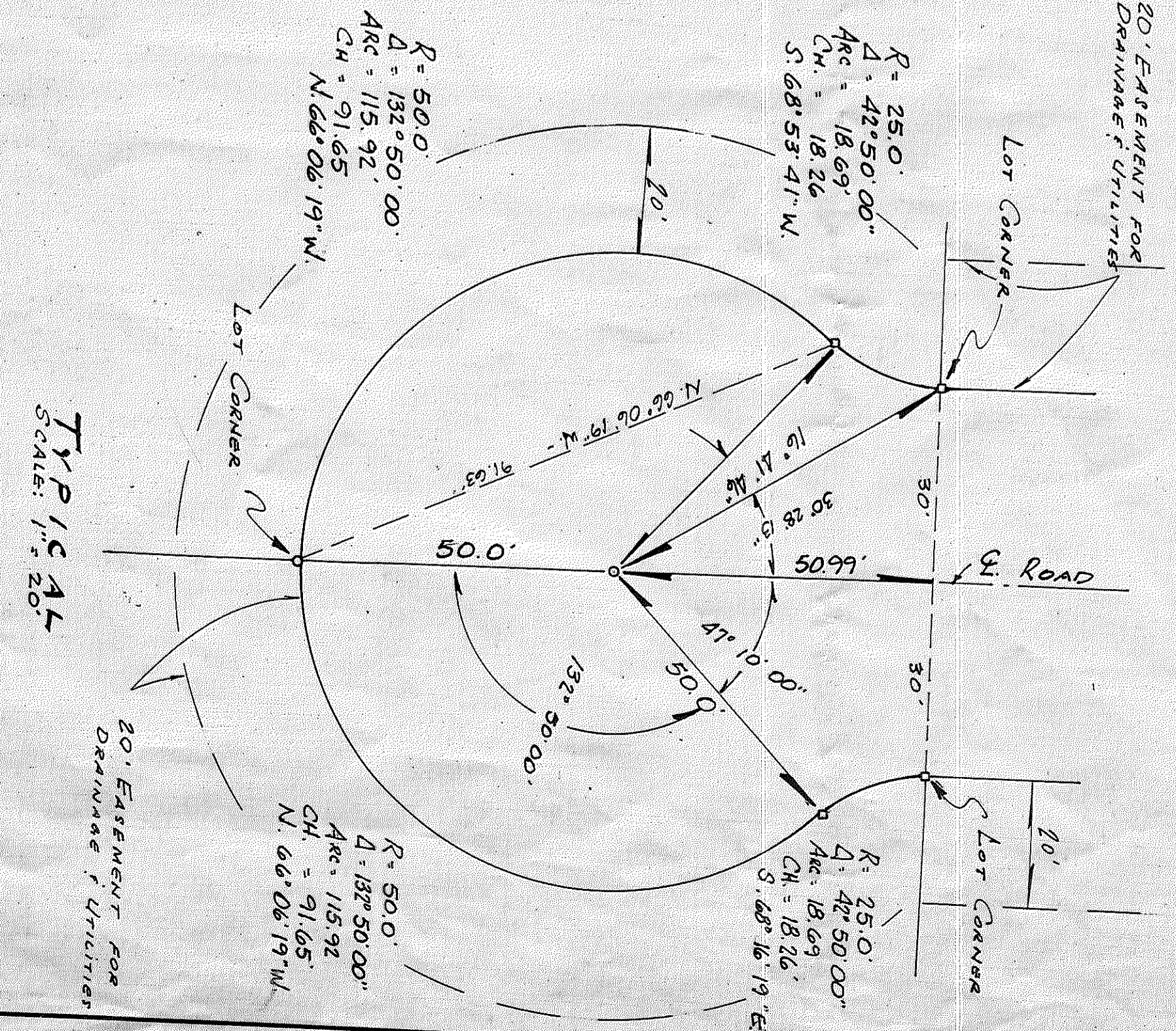
Page # 2

SCALE: 1" = 200'



- LEGEND:**
1. 4" x 4" CONCRETE MONUMENT FOUND IN PLACE;
 2. 4" x 4" CONCRETE MONUMENT SET IN PLACE;
 3. 1/2" IRON PIPES (SER);
 4. 1/2" IRON PIPES FOUND;
 5. ALL LOT LINES SUBJECT TO A 10' UTILITY EASEMENT.

DETAIL:



REVISED: APRIL 21, 1992