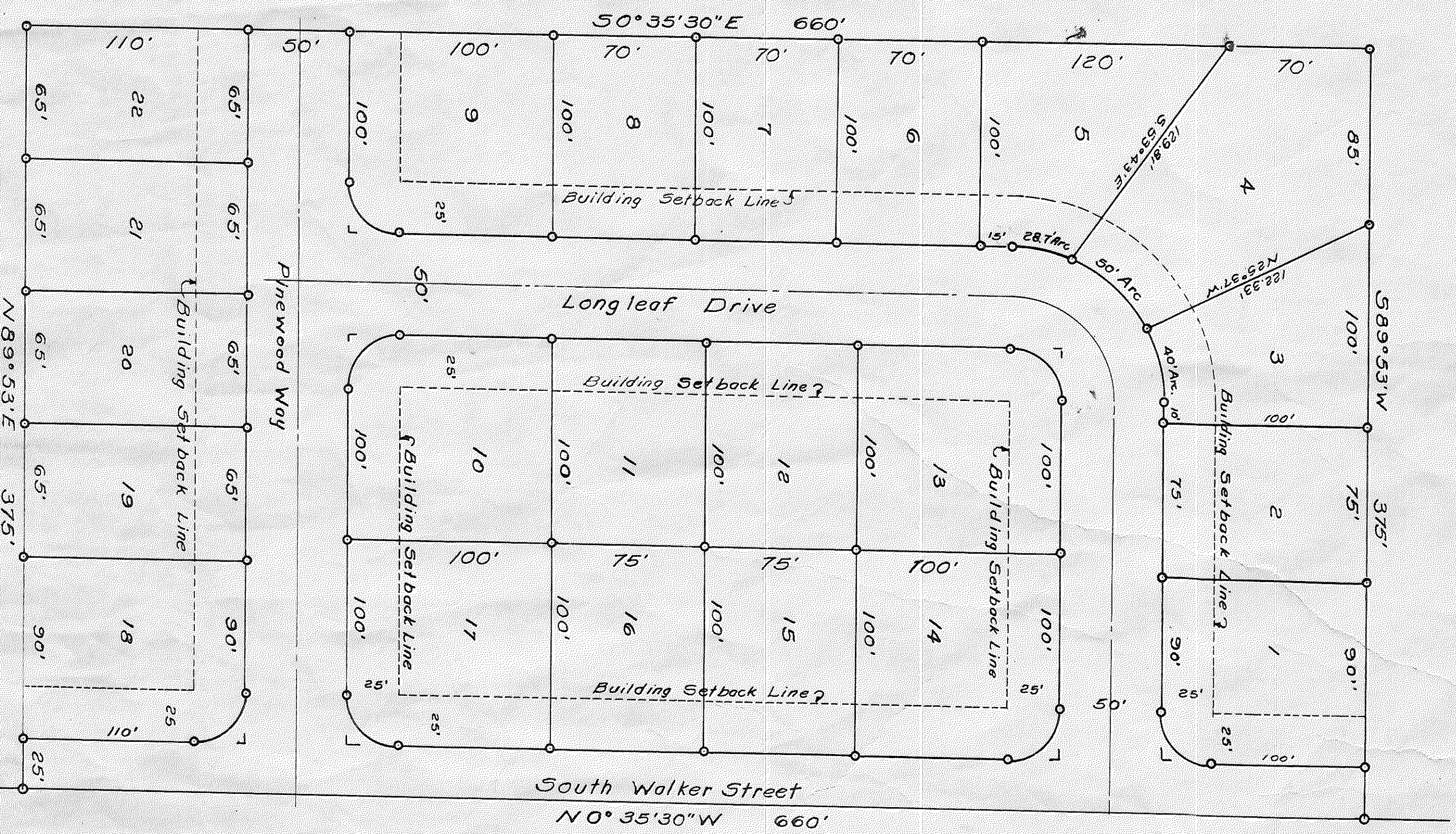
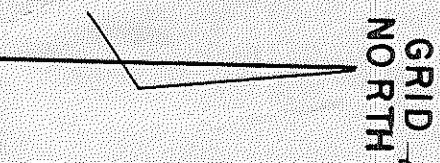


# PINWOOD SECTION 27, TWP. 2 SOUTH, RGE. 13 EAST SUWANNEE COUNTY, FLORIDA



SCALE 1" = 50'  
INDICATES P.R.M.



**DESCRIPTION:**  
BEGIN AT THE N.E. CORNER OF SECTION 27 T2S R13E SUWANNEE COUNTY, FLORIDA, AND RUN S 0° 35' 30" W ALONG THE EAST LINE OF SAID SECTION 27 1983' TO THE P.O.B., RUN THENCE S 89° 53' W 375.0', RUN THENCE S 0° 35' 30" W 660.0', RUN THENCE N 89° 53' E 375.0' TO THE EAST LINE OF SAID SECTION 27, RUN THENCE N 0° 35' 30" E ALONG EAST LINE OF SAID SECTION 27 660.0' TO THE P.O.B. ALL BEING AND LYING IN THE S.E. 1/4 OF THE N.E. 1/4 OF SECTION 27 T2S R13E SUWANNEE COUNTY, FLORIDA.

**DEDICATION:**  
KNOW ALL MEN BY THESE PRESENT THAT THE "NORMANDIE LAND CORP.", A FLORIDA CORPORATION, OWNERS HAVE CAUSED THE LANDS HEREIN DESCRIBED TO BE SURVEYED, LAID OUT, AND SUBDIVIDED AND PLATTED, TO BE KNOWN AS "PINWOOD'S SUBDIVISION", IN WITNESS WHEREOF, THE SAID "NORMANDIE LAND CORP." HAS CAUSED THESE PRESENT TO BE SIGNED IN ITS NAME BY ITS PRESIDENT AND ITS SECRETARY AND ITS CORPORATE SEAL AFFIXED AND THE STREETS AND BOULEVARDS ARE HEREBY DEDICATED TO THE USE OF THE PUBLIC FOREVER.

SIGNED *Virginia M. Couess* PRESIDENT  
SIGNED *Theresa L. Couess* SECRETARY  
DATE March 15<sup>th</sup> 1958

**ACKNOWLEDGE:**  
STATE OF FLORIDA  
COUNTY OF Suwannee  
I HEREBY CERTIFY THAT ON THIS 15<sup>th</sup> DAY OF March, 1958, BEFORE ME PERSONALLY APPEARED *G. J. Knowlton* AND *Virginia M. Couess*, PRESIDENT AND SECRETARY RESPECTIVELY OF THE "NORMANDIE LAND CORP.", A FLORIDA CORPORATION, TO ME WELL KNOWN AND KNOWN TO ME TO BE THE OFFICERS DESCRIBED HEREIN AND WHO EXECUTED THE FOREGOING DEDICATION AND SEVERALLY ACKNOWLEDGED THE EXECUTION THERE-UNTO TO BE THEIR FREE ACT AND DEED AS OFFICERS DULY AUTHORIZED AND THAT THE OFFICIAL SEAL OF SAID CORPORATION IS DULY AFFIXED THERETO AND THE SAID DEDICATION IS THE ACT AND DEED OF THE SAID CORPORATION.

WITNESS MY HAND AND OFFICIAL SEAL THIS 15<sup>th</sup> DAY OF March, 1958  
SIGNED *Sharon J. Farrell*  
NOTARY PUBLIC, STATE OF FLORIDA  
MY COMMISSION EXPIRES April 18, 1959

**SURVEYORS CERTIFICATE:**  
I HEREBY CERTIFY THAT I AM A DULY AUTHORIZED LAND SURVEYOR AND THAT THE LANDS HEREON DESCRIBED HAVE BEEN SURVEYED, LAID OUT, AND SUBDIVIDED AS SHOWN ON THIS PLAT AND PERMIMENT MARKERS HAVE BEEN PLACED AS INDICATED.

SIGNED *B. G. Moore*  
B. G. MOORE, LAND SURVEYOR  
FLORIDA CERTIFICATE NO. 439  
APPROVED BY BOARD OF COUNTY COMMISSIONERS, SUWANNEE COUNTY, FLORIDA  
SIGNED *James A. Kasperman*, CHAIRMAN  
SIGNED *Stewart*, CLERK  
DATE March 15<sup>th</sup> 1958

**FILING CERTIFICATE:**  
I, *Stewart*, CLERK OF THE CIRCUIT COURT OF SUWANNEE COUNTY, FLORIDA, DO HEREBY CERTIFY THAT THIS PLAT COMPLIES WITH CHAPTER 10275, 1925 LAWS OF STATE OF FLORIDA, AND WAS FILED IN MY OFFICE AND PLACED IN PUBLIC RECORDS OF SAID COUNTY THIS 15<sup>th</sup> DAY OF March, 1958, IN PLAT BOOK *Stewart* AT PAGE *Stewart*.  
WITNESS MY HAND AND OFFICIAL SEAL  
CLERK OF THE CIRCUIT COURT  
SUWANNEE COUNTY, FLORIDA