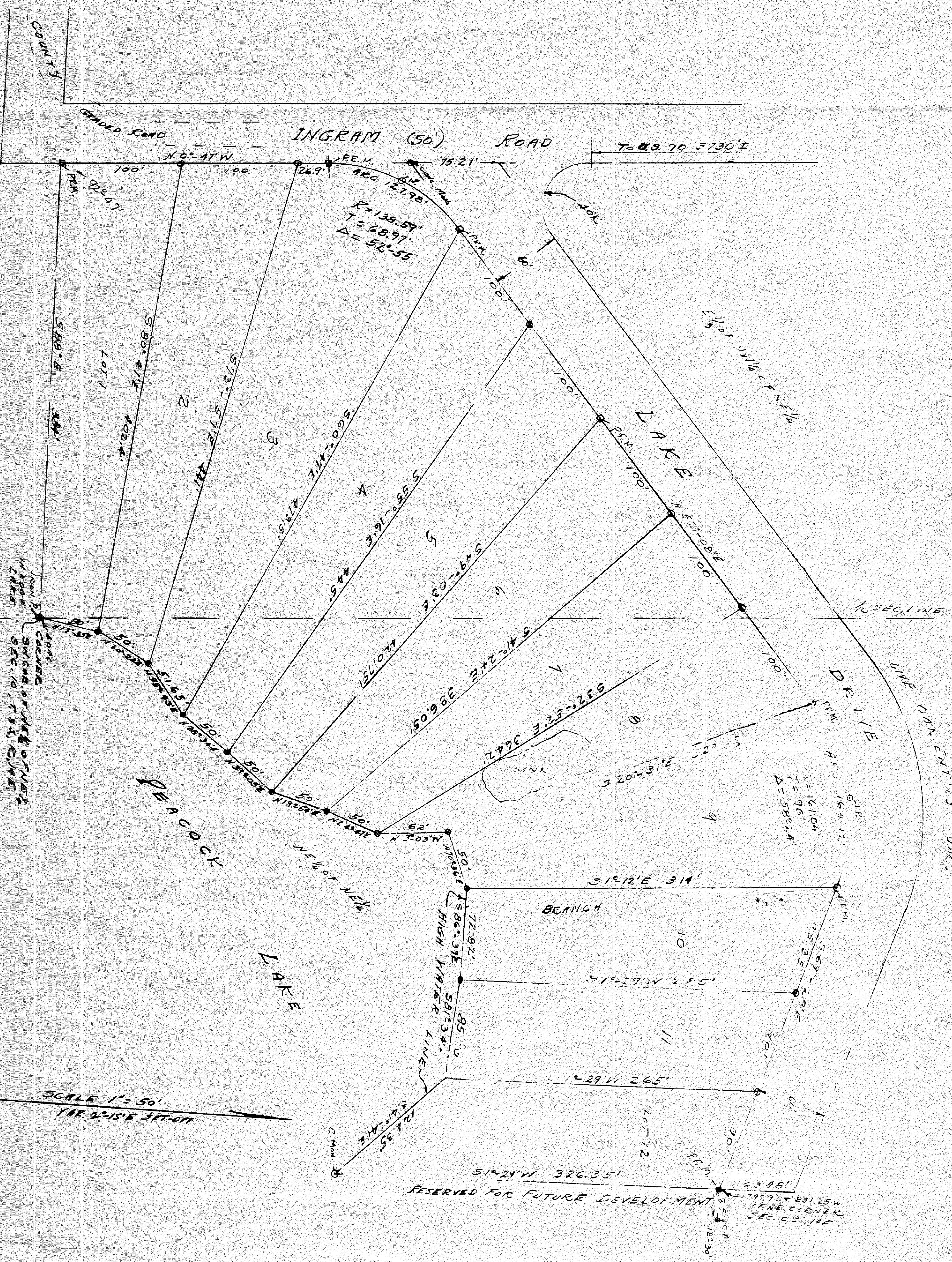


PEACOCK LAKE SUBDIVISION
 PART OF NE 1/4 OF NE 1/4 AND PART OF E 1/2 OF NW 1/4 OF NE 1/4
 SECTION 10, T.35, R.14E, SUWANNEE COUNTY, FLORIDA



STATE OF FLORIDA
 COUNTY OF SUWANNEE
 I, DAVID M. SCHWARTZ, Surveyor, do hereby certify that the above plat is a true and correct copy of the original filed in my office on 10/10/1961.

STATE OF FLORIDA
 COUNTY OF SUWANNEE
 I, DAVID M. SCHWARTZ, Surveyor, do hereby certify that the above plat is a true and correct copy of the original filed in my office on 10/10/1961.

STATE OF FLORIDA
 COUNTY OF SUWANNEE
 I, DAVID M. SCHWARTZ, Surveyor, do hereby certify that the above plat is a true and correct copy of the original filed in my office on 10/10/1961.

STATE OF FLORIDA
 COUNTY OF SUWANNEE
 I, DAVID M. SCHWARTZ, Surveyor, do hereby certify that the above plat is a true and correct copy of the original filed in my office on 10/10/1961.

STATE OF FLORIDA
 COUNTY OF SUWANNEE
 I, DAVID M. SCHWARTZ, Surveyor, do hereby certify that the above plat is a true and correct copy of the original filed in my office on 10/10/1961.