



LEGEND AND NOTES:

- 1) WATER SUPPLIED BY INDIVIDUAL WELL.
- 2) SEWAGE DISPOSAL SUPPLIED BY INDIVIDUAL SEPTIC TANKS.
- 3) SET 4" X 4" CONCRETE MONUMENTS (STAMPED L.B.# 7170) ON ALL LOT CORNERS, UNLESS NOTED OTHERWISE.
- 4) BASE BEARINGS ON THE EAST LINE OF SECTION 32.

ZONING
 RSR-1 - RESIDENTIAL SINGLE FAMILY 1
BUILDING SET BACKS:
 FRONT: 30 FEET
 SIDE: 15 FEET
 REAR: 15 FEET

ADDITIONS
 1. NORTH
 2. SOUTH
 3. EAST
 4. WEST
 5. CENTER
 6. CORNER
 7. POINT
 8. POINT OF BEGINNING
 9. POINT OF ENDING
 10. POINT OF INTERSECTION
 11. POINT OF TANGENCY
 12. POINT OF CURVATURE
 13. POINT OF BEGINNING OF CURVE
 14. POINT OF ENDING OF CURVE
 15. POINT OF INTERSECTION OF CURVES
 16. POINT OF TANGENCY OF CURVES
 17. POINT OF BEGINNING OF STRAIGHT LINE
 18. POINT OF ENDING OF STRAIGHT LINE
 19. POINT OF BEGINNING OF ARC
 20. POINT OF ENDING OF ARC
 21. POINT OF BEGINNING OF CHORD
 22. POINT OF ENDING OF CHORD
 23. POINT OF BEGINNING OF TANGENT
 24. POINT OF ENDING OF TANGENT
 25. POINT OF BEGINNING OF SECANT
 26. POINT OF ENDING OF SECANT
 27. POINT OF BEGINNING OF NORMAL
 28. POINT OF ENDING OF NORMAL
 29. POINT OF BEGINNING OF SUBTANGENT
 30. POINT OF ENDING OF SUBTANGENT
 31. POINT OF BEGINNING OF SUBSECANT
 32. POINT OF ENDING OF SUBSECANT
 33. POINT OF BEGINNING OF SUBNORMAL
 34. POINT OF ENDING OF SUBNORMAL
 35. POINT OF BEGINNING OF SUBTANGENT
 36. POINT OF ENDING OF SUBTANGENT
 37. POINT OF BEGINNING OF SUBSECANT
 38. POINT OF ENDING OF SUBSECANT
 39. POINT OF BEGINNING OF SUBNORMAL
 40. POINT OF ENDING OF SUBNORMAL

OLD SUGAR MILL FARMS, PHASE 5

NOTICE:
 This plat, as recorded in its graphic form, is the official depiction of the subdivided lands described herein and will be the basis for the determination of the location of any utility or other public facility that may be located on this plat. There may be additional utility or other public facilities that are not shown on this plat but are shown on the official records of the county.

NOTICE:
 All public utility easements shall provide that such easement shall also be easements for the collection, transmission, distribution, and operation of cable television services, provided, however, no such construction, installation, maintenance, and operation of cable television services shall interfere with the operation of any other public utility. In the event a cable television company damages the facilities of a public utility, it shall be solely responsible for the damages.

NOTICE:
 FINISHED FLOOR CRITERIA:
 NO PORTION OF THE SITE RESERVING DESIGNATED FLOOR PROJECTIONS OR DEPRESSIONS, WHEN ESTABLISHING A FINISHED FLOOR ELEVATION OR STRUCTURE, THE CONTRACTOR SHALL SET THE FINISHED FLOOR PROJECTIONS OR DEPRESSIONS TO THE FINISHED FLOOR ELEVATION OF THE NATURAL DRAINAGE SHALL BE DIRECTED AROUND STRUCTURES WITH SLOPES

NOTICE:
 This plat, as recorded in its graphic form, is the official depiction of the subdivided lands described herein and will be the basis for the determination of the location of any utility or other public facility that may be located on this plat. There may be additional utility or other public facilities that are not shown on this plat but are shown on the official records of the county.

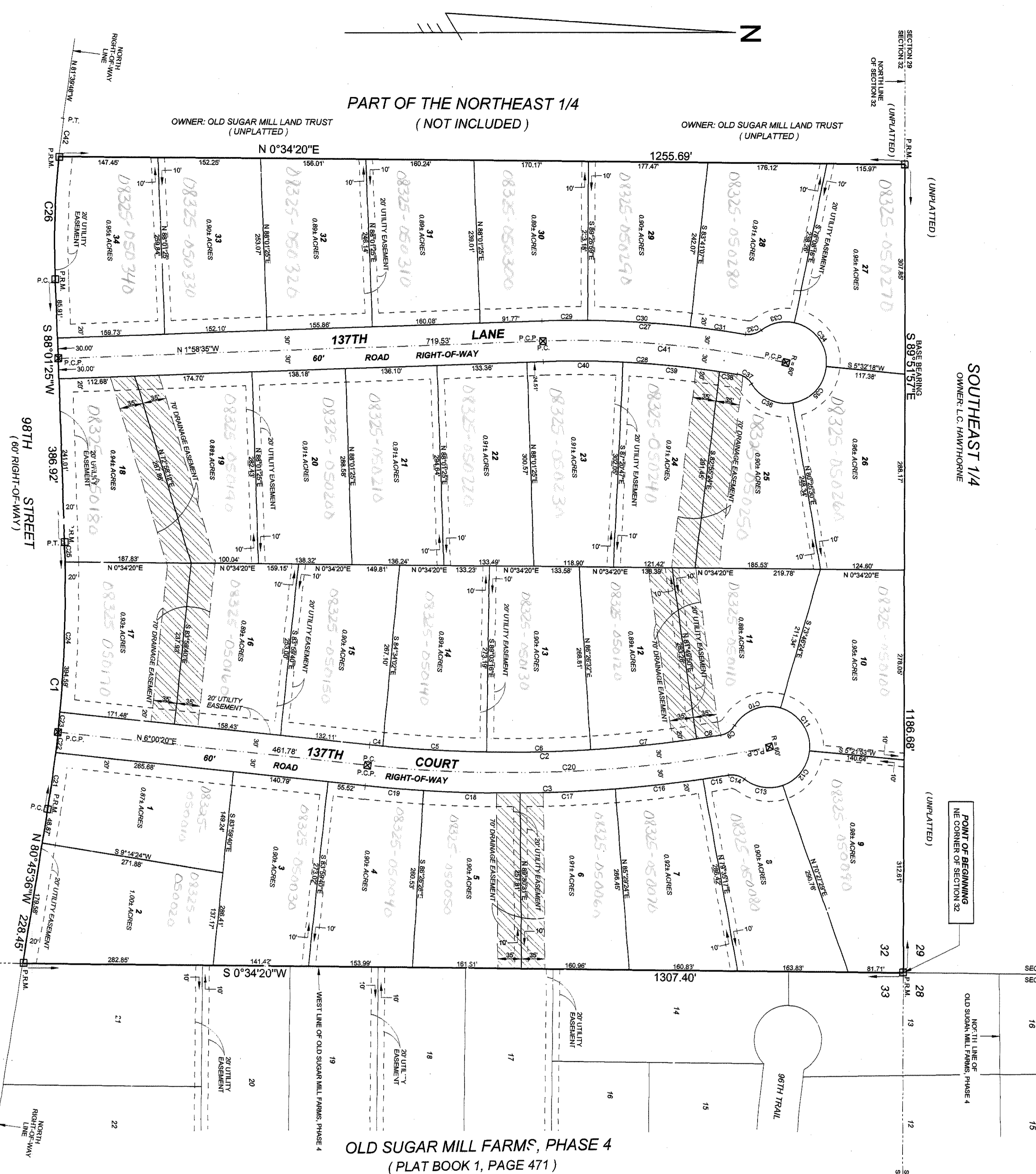
NOTICE:
 All public utility easements shall provide that such easement shall also be easements for the collection, transmission, distribution, and operation of cable television services, provided, however, no such construction, installation, maintenance, and operation of cable television services shall interfere with the operation of any other public utility. In the event a cable television company damages the facilities of a public utility, it shall be solely responsible for the damages.

NOTICE:
 FINISHED FLOOR CRITERIA:
 NO PORTION OF THE SITE RESERVING DESIGNATED FLOOR PROJECTIONS OR DEPRESSIONS, WHEN ESTABLISHING A FINISHED FLOOR ELEVATION OR STRUCTURE, THE CONTRACTOR SHALL SET THE FINISHED FLOOR PROJECTIONS OR DEPRESSIONS TO THE FINISHED FLOOR ELEVATION OF THE NATURAL DRAINAGE SHALL BE DIRECTED AROUND STRUCTURES WITH SLOPES

NOTICE:
 This plat, as recorded in its graphic form, is the official depiction of the subdivided lands described herein and will be the basis for the determination of the location of any utility or other public facility that may be located on this plat. There may be additional utility or other public facilities that are not shown on this plat but are shown on the official records of the county.

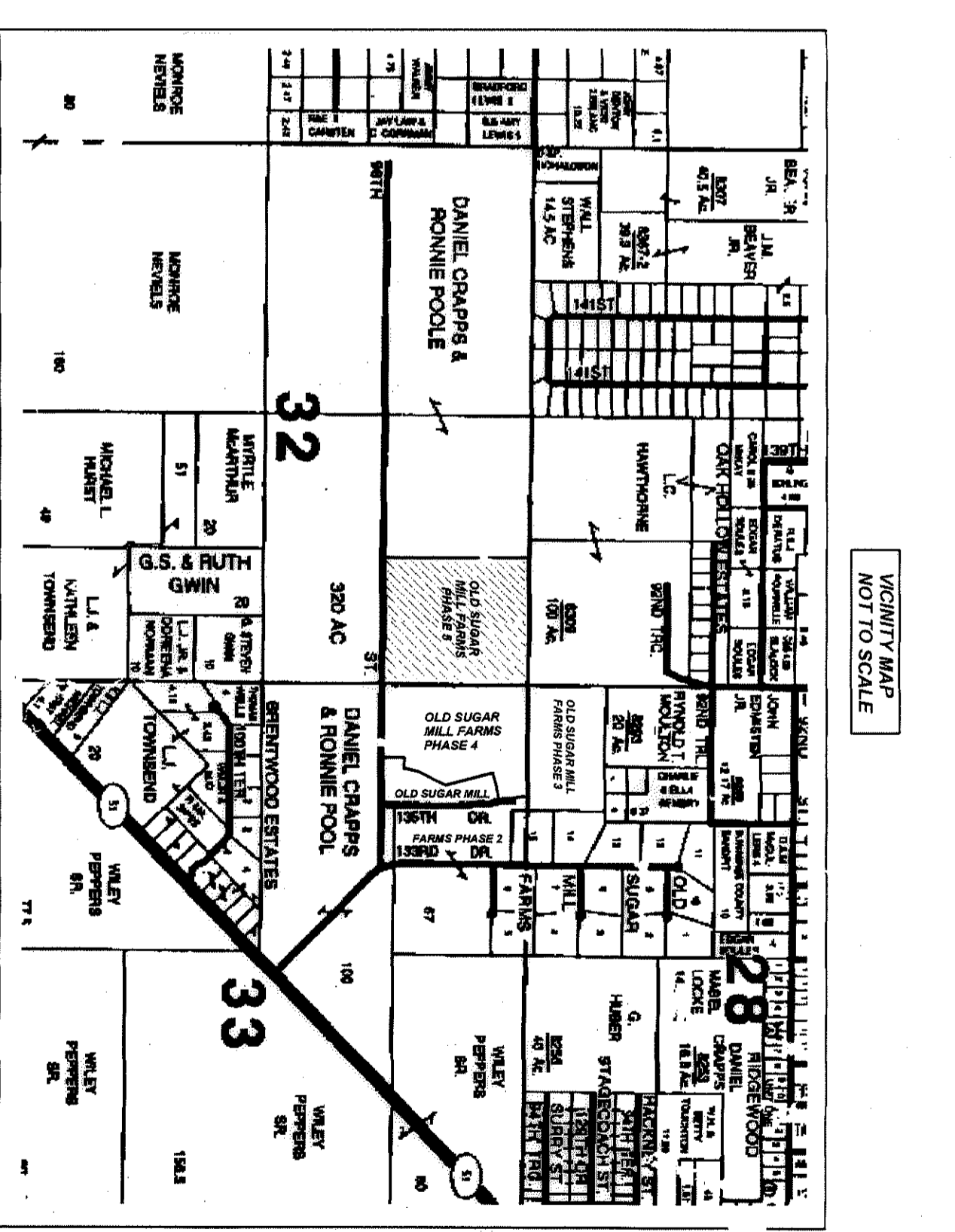
NOTICE:
 All public utility easements shall provide that such easement shall also be easements for the collection, transmission, distribution, and operation of cable television services, provided, however, no such construction, installation, maintenance, and operation of cable television services shall interfere with the operation of any other public utility. In the event a cable television company damages the facilities of a public utility, it shall be solely responsible for the damages.

NOTICE:
 FINISHED FLOOR CRITERIA:
 NO PORTION OF THE SITE RESERVING DESIGNATED FLOOR PROJECTIONS OR DEPRESSIONS, WHEN ESTABLISHING A FINISHED FLOOR ELEVATION OR STRUCTURE, THE CONTRACTOR SHALL SET THE FINISHED FLOOR PROJECTIONS OR DEPRESSIONS TO THE FINISHED FLOOR ELEVATION OF THE NATURAL DRAINAGE SHALL BE DIRECTED AROUND STRUCTURES WITH SLOPES



CURVE DATA

Curve	Chain Angle	Radius	Area	Temp	Dist	Chord Bearing
1	111.12°	1000.00	78538.00	197.51	203.98	S 138.12° E 203.98
2	111.12°	1000.00	78538.00	197.51	203.98	S 138.12° E 203.98
3	111.12°	1000.00	78538.00	197.51	203.98	S 138.12° E 203.98
4	111.12°	1000.00	78538.00	197.51	203.98	S 138.12° E 203.98
5	111.12°	1000.00	78538.00	197.51	203.98	S 138.12° E 203.98
6	111.12°	1000.00	78538.00	197.51	203.98	S 138.12° E 203.98
7	111.12°	1000.00	78538.00	197.51	203.98	S 138.12° E 203.98
8	111.12°	1000.00	78538.00	197.51	203.98	S 138.12° E 203.98
9	111.12°	1000.00	78538.00	197.51	203.98	S 138.12° E 203.98
10	111.12°	1000.00	78538.00	197.51	203.98	S 138.12° E 203.98
11	111.12°	1000.00	78538.00	197.51	203.98	S 138.12° E 203.98
12	111.12°	1000.00	78538.00	197.51	203.98	S 138.12° E 203.98
13	111.12°	1000.00	78538.00	197.51	203.98	S 138.12° E 203.98
14	111.12°	1000.00	78538.00	197.51	203.98	S 138.12° E 203.98
15	111.12°	1000.00	78538.00	197.51	203.98	S 138.12° E 203.98
16	111.12°	1000.00	78538.00	197.51	203.98	S 138.12° E 203.98
17	111.12°	1000.00	78538.00	197.51	203.98	S 138.12° E 203.98
18	111.12°	1000.00	78538.00	197.51	203.98	S 138.12° E 203.98
19	111.12°	1000.00	78538.00	197.51	203.98	S 138.12° E 203.98
20	111.12°	1000.00	78538.00	197.51	203.98	S 138.12° E 203.98
21	111.12°	1000.00	78538.00	197.51	203.98	S 138.12° E 203.98
22	111.12°	1000.00	78538.00	197.51	203.98	S 138.12° E 203.98
23	111.12°	1000.00	78538.00	197.51	203.98	S 138.12° E 203.98
24	111.12°	1000.00	78538.00	197.51	203.98	S 138.12° E 203.98
25	111.12°	1000.00	78538.00	197.51	203.98	S 138.12° E 203.98
26	111.12°	1000.00	78538.00	197.51	203.98	S 138.12° E 203.98
27	111.12°	1000.00	78538.00	197.51	203.98	S 138.12° E 203.98
28	111.12°	1000.00	78538.00	197.51	203.98	S 138.12° E 203.98
29	111.12°	1000.00	78538.00	197.51	203.98	S 138.12° E 203.98
30	111.12°	1000.00	78538.00	197.51	203.98	S 138.12° E 203.98
31	111.12°	1000.00	78538.00	197.51	203.98	S 138.12° E 203.98
32	111.12°	1000.00	78538.00	197.51	203.98	S 138.12° E 203.98
33	111.12°	1000.00	78538.00	197.51	203.98	S 138.12° E 203.98
34	111.12°	1000.00	78538.00	197.51	203.98	S 138.12° E 203.98
35	111.12°	1000.00	78538.00	197.51	203.98	S 138.12° E 203.98
36	111.12°	1000.00	78538.00	197.51	203.98	S 138.12° E 203.98
37	111.12°	1000.00	78538.00	197.51	203.98	S 138.12° E 203.98
38	111.12°	1000.00	78538.00	197.51	203.98	S 138.12° E 203.98
39	111.12°	1000.00	78538.00	197.51	203.98	S 138.12° E 203.98
40	111.12°	1000.00	78538.00	197.51	203.98	S 138.12° E 203.98
41	111.12°	1000.00	78538.00	197.51	203.98	S 138.12° E 203.98



ADOPTION AND DEDICATION:
 KNOWN ALL MEN BY THESE PRESENTS THAT RONNIE POOLE AND DANIEL CHAPAS AS TRUSTEES OF OLD SUGAR MILL FARMS LAND TRUST HAS CAUSED THE LANDS HEREBY DESCRIBED TO BE SURVEYED AND PLATTED TO BE KNOWN AS OLD SUGAR MILL FARMS PHASE 5 AND THAT THE ROADS, STREETS AND EASEMENTS FOR UTILITIES HEREIN SHOWN ARE HEREBY DEDICATED TO THE PUBLIC USE OF THE COUNTY OF SUWANNEE, FLORIDA.

STATE OF FLORIDA, COUNTY OF SUWANNEE
 I, DANIEL CHAPAS, A.D. 2008, BEING HEREBY PERSONALLY AND TRUSTEDLY KNOWN TO BE THE INDIVIDUALS DESCRIBED IN AND WHO EXECUTED THE FOREGOING DEDICATION AND THEIR ACKNOWLEDGEMENT EXECUTION THEREOF.

WITNESS MY HAND AND SEAL, AT LALU, STATE OF FLORIDA,
 THIS 1st DAY OF August, A.D. 2008.

APPROVED BY BOARD OF COUNTY COMMISSIONERS, SUWANNEE COUNTY, FLORIDA.
 My Commission Expires: June 22, 2007

CERTIFICATE OF CLERK:
 I HEREBY CERTIFY THAT THE FOREGOING PLAT, HAVING BEEN DULY APPROVED BY THE BOARD OF COUNTY COMMISSIONERS, SUWANNEE COUNTY, FLORIDA, AND ACCEPTED AND FILED FOR RECORD THIS 22nd DAY OF August, A.D. 2008, IN PLAT BOOK 537 OF THE PUBLIC RECORDS OF SAID SUWANNEE COUNTY, FLORIDA.

ENGINEERS CERTIFICATE:
 WE, THE UNDERSIGNED, AS ENGINEERS, DO HEREBY CERTIFY THAT ALL REQUIRED STATUTES, LICENSE NO. 20888, DOES HEREBY CERTIFY THAT ALL REQUIRED CONSTRUCTION STANDARDS AND REGULATIONS HAVE BEEN OBSERVED AND COMPLIANCE WITH THE REQUIREMENTS OF THE BOARD OF COUNTY COMMISSIONERS OF SUWANNEE COUNTY, FLORIDA.

REGISTERED FLORIDA ENGINEER
 CURTIS REYN

SURVEYOR'S CERTIFICATE:
 I HEREBY CERTIFY THAT THIS IS A TRUE AND CORRECT REPRESENTATION OF THE LANDS SURVEYED AND SHOWN HEREON THAT THE PLAT'S PERMANENT REFERENCE POINTS HAVE BEEN PLACED AS SHOWN AND THAT THE SURVEY DATA AS SHOWN COMPLIES WITH THE REQUIREMENTS OF CHAPTER 117, F.S. (LOCAL SURVEYS).

NOT VALID WITHOUT THE SIGNATURE AND THE ORIGINAL RAISED SEAL OF A FLORIDA LICENSED SURVEYOR AND MAPPER

T. J. SHERMAN FRIER & ASSOCIATES, INC.
 LAND SURVEYORS
 1301 WEST HOWARD STREET, P.O. BOX 590, LALU, OKLAHOMA 73054
 PHONE: 361-282-4829 FAX: 361-282-5270

THIS PLAT HAS BEEN PREPARED FOR COMPANION TO CHAPTER 177 BY:
 STUART P. MOORE
 SURVEYOR AND MAPPER
 FLORIDA CERTIFICATE NO. 2899

SCALE: 1"=100'
 DATE SURVEYED: []
 DATE DRAWN: 08/31/08
 J. SHERMAN FRIER & ASSOCIATES, INC.
 LAND SURVEYORS
 1301 WEST HOWARD STREET, P.O. BOX 590, LALU, OKLAHOMA 73054
 PHONE: 361-282-4829 FAX: 361-282-5270