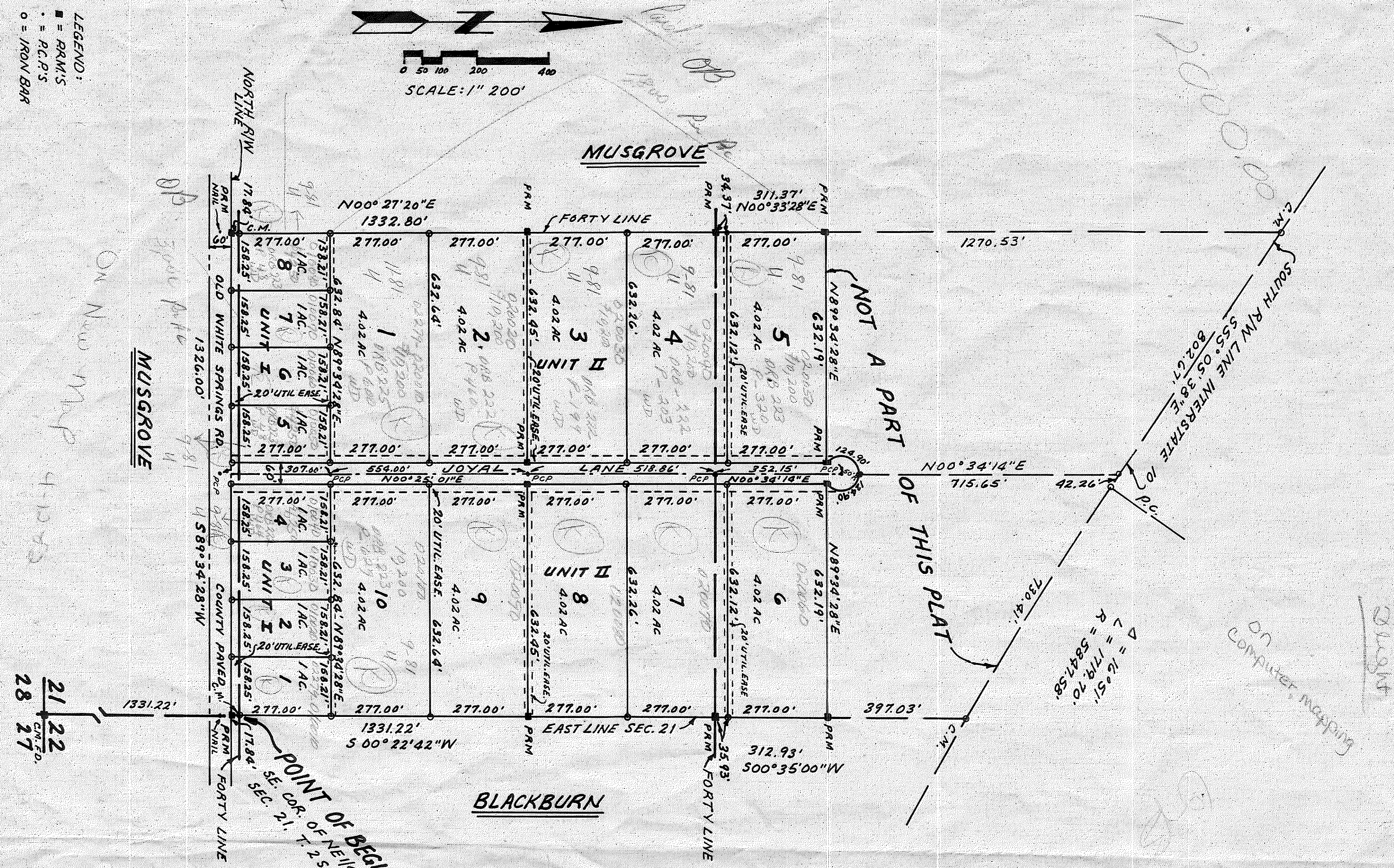


Oakwood Estates
Units I & II

OAKWOOD ESTATES UNITS I AND II
A SUBDIVISION OF A PART OF THE N1/4 OF THE E1/4 OF SECTION 21, TOWNSHIP 2 SOUTH, RANGE 14 EAST, SUWANNEE COUNTY, FLA

Parcel # 02279-01000 thru 020080-Unit 1
02279-02000 thru 020180-Unit 2
02279-03000 thru 020280-Unit 3
02279-04000 thru 020380-Unit 4
02279-05000 thru 020480-Unit 5
02279-06000 thru 020580-Unit 6
02279-07000 thru 020680-Unit 7
02279-08000 thru 020780-Unit 8
02279-09000 thru 020880-Unit 9
02279-10000 thru 020980-Unit 10
02279-11000 thru 021080-Unit 11
02279-12000 thru 021180-Unit 12
02279-13000 thru 021280-Unit 13
02279-14000 thru 021380-Unit 14
02279-15000 thru 021480-Unit 15
02279-16000 thru 021580-Unit 16
02279-17000 thru 021680-Unit 17
02279-18000 thru 021780-Unit 18
02279-19000 thru 021880-Unit 19
02279-20000 thru 021980-Unit 20
02279-21000 thru 022080-Unit 21
02279-22000 thru 022180-Unit 22
02279-23000 thru 022280-Unit 23
02279-24000 thru 022380-Unit 24
02279-25000 thru 022480-Unit 25
02279-26000 thru 022580-Unit 26
02279-27000 thru 022680-Unit 27
02279-28000 thru 022780-Unit 28
02279-29000 thru 022880-Unit 29
02279-30000 thru 022980-Unit 30
02279-31000 thru 023080-Unit 31
02279-32000 thru 023180-Unit 32
02279-33000 thru 023280-Unit 33
02279-34000 thru 023380-Unit 34
02279-35000 thru 023480-Unit 35
02279-36000 thru 023580-Unit 36
02279-37000 thru 023680-Unit 37
02279-38000 thru 023780-Unit 38
02279-39000 thru 023880-Unit 39
02279-40000 thru 023980-Unit 40
02279-41000 thru 024080-Unit 41
02279-42000 thru 024180-Unit 42
02279-43000 thru 024280-Unit 43
02279-44000 thru 024380-Unit 44
02279-45000 thru 024480-Unit 45
02279-46000 thru 024580-Unit 46
02279-47000 thru 024680-Unit 47
02279-48000 thru 024780-Unit 48
02279-49000 thru 024880-Unit 49
02279-50000 thru 024980-Unit 50
02279-51000 thru 025080-Unit 51
02279-52000 thru 025180-Unit 52
02279-53000 thru 025280-Unit 53
02279-54000 thru 025380-Unit 54
02279-55000 thru 025480-Unit 55
02279-56000 thru 025580-Unit 56
02279-57000 thru 025680-Unit 57
02279-58000 thru 025780-Unit 58
02279-59000 thru 025880-Unit 59
02279-60000 thru 025980-Unit 60
02279-61000 thru 026080-Unit 61
02279-62000 thru 026180-Unit 62
02279-63000 thru 026280-Unit 63
02279-64000 thru 026380-Unit 64
02279-65000 thru 026480-Unit 65
02279-66000 thru 026580-Unit 66
02279-67000 thru 026680-Unit 67
02279-68000 thru 026780-Unit 68
02279-69000 thru 026880-Unit 69
02279-70000 thru 026980-Unit 70
02279-71000 thru 027080-Unit 71
02279-72000 thru 027180-Unit 72
02279-73000 thru 027280-Unit 73
02279-74000 thru 027380-Unit 74
02279-75000 thru 027480-Unit 75
02279-76000 thru 027580-Unit 76
02279-77000 thru 027680-Unit 77
02279-78000 thru 027780-Unit 78
02279-79000 thru 027880-Unit 79
02279-80000 thru 027980-Unit 80
02279-81000 thru 028080-Unit 81
02279-82000 thru 028180-Unit 82
02279-83000 thru 028280-Unit 83
02279-84000 thru 028380-Unit 84
02279-85000 thru 028480-Unit 85
02279-86000 thru 028580-Unit 86
02279-87000 thru 028680-Unit 87
02279-88000 thru 028780-Unit 88
02279-89000 thru 028880-Unit 89
02279-90000 thru 028980-Unit 90
02279-91000 thru 029080-Unit 91
02279-92000 thru 029180-Unit 92
02279-93000 thru 029280-Unit 93
02279-94000 thru 029380-Unit 94
02279-95000 thru 029480-Unit 95
02279-96000 thru 029580-Unit 96
02279-97000 thru 029680-Unit 97
02279-98000 thru 029780-Unit 98
02279-99000 thru 029880-Unit 99
02279-100000 thru 029980-Unit 100

LEGEND:
■ = P.M.M.S.
● = R.C.P.S.
○ = IRON BAR



DESCRIPTION:

THE NORTH 3/4 OF THE EAST 1/4 LYING SOUTH OF INTERSTATE 10 R/W, ALSO THAT PORTION OF THE SE 1/4 OF SE 1/4 LYING NORTH OF OLD WHITE SPRINGS ROAD IN SECTION 21, TOWNSHIP 2 SOUTH, RANGE 14 EAST, SUWANNEE COUNTY, FLORIDA, BEING MORE PARTICULARLY DESCRIBED AS FOLLOWS: BEGIN AT THE SOUTHWEST CORNER OF THE NE 1/4 OF SE 1/4, SECTION 21, TOWNSHIP 2 SOUTH, RANGE 14 EAST, SUWANNEE COUNTY, FLA, AND RUN THENCE 500' 22' 42" W 17.84 FEET TO THE NORTH RIGHT-OF-WAY LINE OF OLD WHITE SPRINGS ROAD BEING 60 FEET IN WIDTH, THENCE RUN S89°34'28"W ALONG SAID NORTH RIGHT-OF-WAY LINE 132.60 FEET, THENCE RUN N00°27'20"E ALONG THE WEST LINE OF THE E 1/2 OF SE 1/4 OF SAID SECTION 21, 1350.64 FEET, THENCE N00°33'12"E ALONG THE WEST LINE OF SE 1/4 OF SAID SECTION 21, 1350.64 FEET, THENCE WEST R/W LINE OF ROAD AND THE BEGINNING OF A 50 FEET RADIUS CURVE-SAC, THENCE RUN N89°34'28"E, 632.19 FEET TO THE ARC OF SAID CURVE-SAC 248.80 FEET, THENCE N89°34'28"E, 632.19 FEET TO THE EAST LINE OF SECTION 21, THENCE RUN S00°35'00"W ALONG SAID EAST LINE OF SECTION 21, 312.93 FEET, THENCE RUN S00°21'42"W ALONG EAST LINE OF SECTION 21, 1331.22 FEET TO THE POINT OF BEGINNING.

DEDICATION:

ALLEN FRITZ, JOYCE FRITZ, AND JAMES FRITZ DO HEREBY CERTIFY THAT THEY ARE THE OWNERS OF THE ABOVE DESCRIBED PROPERTY AND DO HEREBY DEDICATE TO THE PUBLIC FOREVER THE STREETS AND EASEMENTS AS SHOWN ON THIS PLAT OF "OAKWOOD ESTATES" UNITS NO. I AND II.

ALLEN FRITZ

WITNESS

WITNESS

JOYCE FRITZ

WITNESS

WITNESS

JAMES FRITZ

WITNESS

WITNESS

ACKNOWLEDGEMENT:

COUNTY OF SUWANNEE:

BEFORE ME PERSONALLY APPEARED ALLEN FRITZ, JOYCE FRITZ, AND JAMES FRITZ, WHO ARE TO ME WELL KNOWN AND KNOWN TO ME TO BE THE INDIVIDUALS DESCRIBED IN AND WHO EXECUTED THE FOREGOING DEDICATION AND WHO ACKNOWLEDGED TO AND BEFORE ME THAT THEY EXECUTED SAID DEDICATION FOR THE USES AND PURPOSES THEREIN EXPRESSED. WITNESS MY HAND AND OFFICIAL SEAL THIS _____ DAY OF _____, 1981 A.D.

SURVEYORS CERTIFICATE:

I DO HEREBY CERTIFY THAT THIS PLAT OF OAKWOOD ESTATES UNITS NO. I AND II IS A TRUE AND CORRECT REPRESENTATION OF HEREIN DESCRIBED LANDS ACCORDING TO A SURVEY MADE UNDER MY RESPONSIBLE DIRECTION AND SUPERVISION AND THAT PERMANENT REFERENCE MONUMENTS (GRAN) AND PERMANENT CONTROL POINTS (COP) HAVE BEEN SET AS CALLED FOR UNDER CHAPTER 177, SECTION .091 (7 & 8) LAWS OF FLORIDA, AND THE SURVEY DATA COMPILES WITH ALL THE REQUIREMENTS OF CHAPTER 177 F.S. 1975.

DATE 10 June 1981

U.D. SCRUGGS REG. P.M. LAND SURVEYOR NO. 963

SUWANNEE COUNTY COMMISSIONER'S APPROVAL:

APPROVED BY THE BOARD OF COUNTY COMMISSIONERS OF SUWANNEE COUNTY, FLORIDA
CHAIRMAN *Raymond G. Pace* CLERK ATTORNEY *John A. Ladd* DATE 7/27/81

CLERK'S CERTIFICATE OF APPROVAL:

THIS PLAT HAS BEEN FILED FOR RECORD AND RECORDED IN THE PUBLIC RECORDS OF SUWANNEE COUNTY, FLORIDA, THIS 27 DAY OF July, 1981 A.D. CLERK _____ DEPUTY CLERK *John Bennett*

POINT OF BEGINNING
SE COR. OF NE 1/4 OF SE 1/4, T. 2 S., R. 14 E.

21 22
28 27