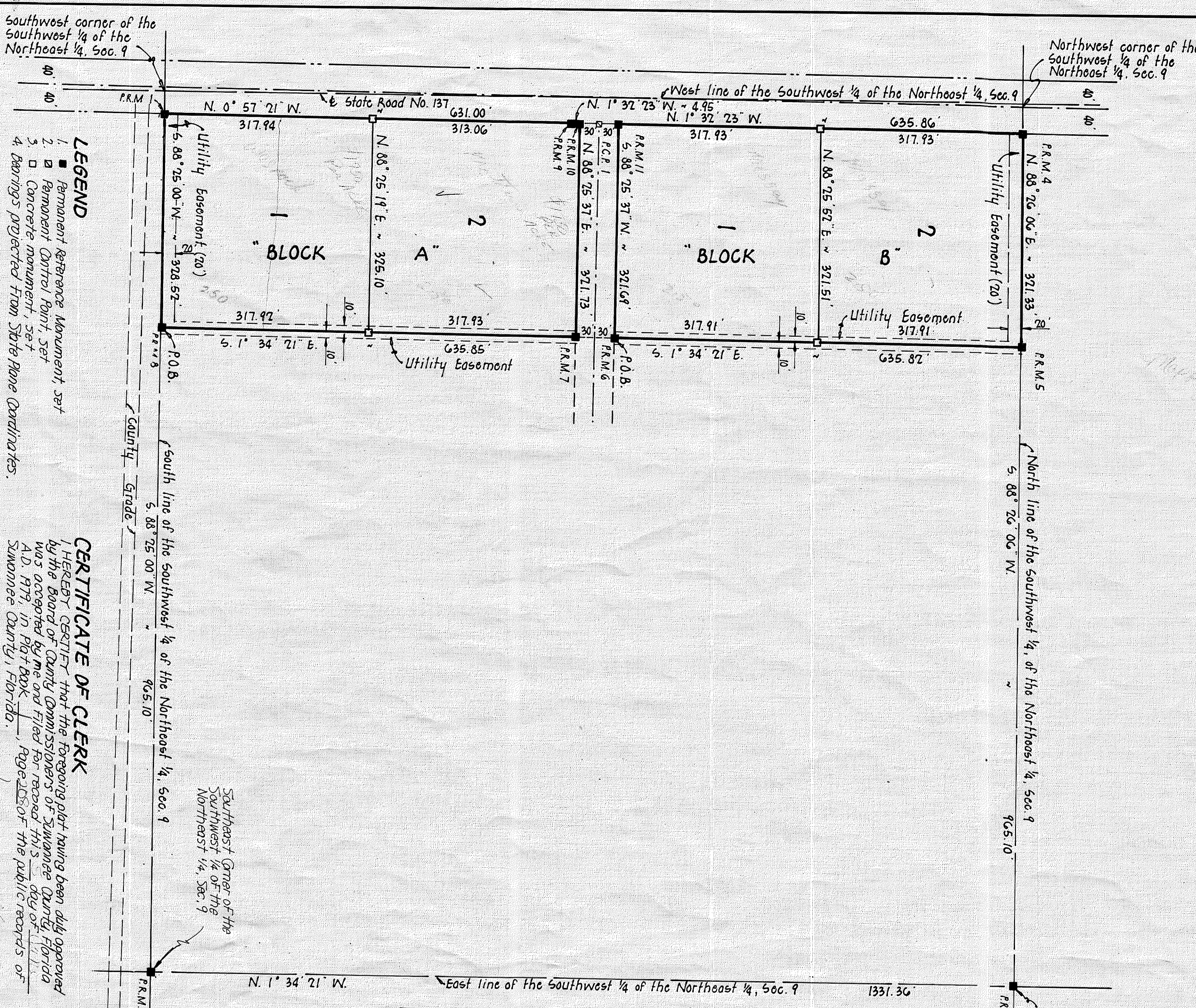
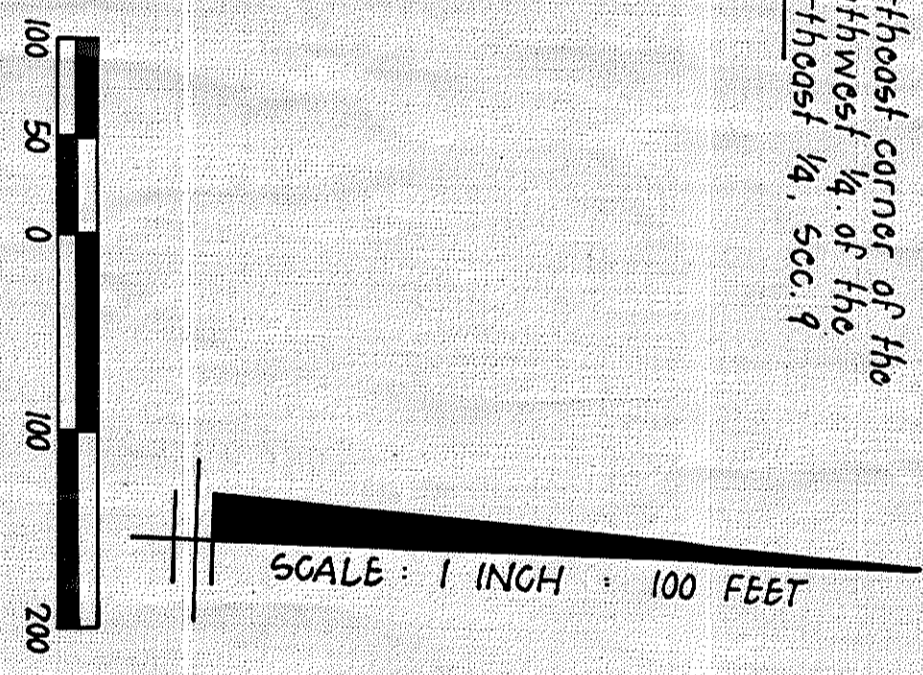


OAKWOOD ACRES IN SECTION 9, TOWNSHIP 5 SOUTH, RANGE 15 EAST SUWANNEE COUNTY, FLORIDA



- LEGEND
1. Permanent Reference Monument, set
2. Permanent Control Point, set
3. Concrete monument, set
4. Bearings projected from State Plane Coordinates.

CERTIFICATE OF CLERK
I HEREBY CERTIFY that the foregoing plat having been duly prepared by the Board of County Commissioners of Suwannee County, Florida...



DESCRIPTION
CONVENGE of the southeast corner of the southwest 1/4 of the Northeast 1/4, Township 5 South, Range 15 East, Suwannee County, Florida and run 5.88' 25.00" W. along the south line of said southwest 1/4 of the Northeast 1/4, section 9, a distance of 95.10 feet to the POINT OF BEGINNING; thence continue 5.88' 25.00" W. still along said south line 328.52 feet to the East right of way line of State Road No. 137; thence N. 0' 57' 21.00" W. along said East right of way line 631.00 feet to the POINT OF BEGINNING.

ACKNOWLEDGEMENT STATE OF FLORIDA COUNTY OF COLUMBIA
The foregoing instrument was acknowledged before me this 15th day of August, 1979, by HENRY L. MASSEY, JR. and MARGARET B. MASSEY, husband and wife, and SECRETARY OF MASSSEY ASSOCIATES, INC.

ACKNOWLEDGEMENT STATE OF FLORIDA COUNTY OF SUWANNEE
The foregoing instrument was acknowledged before me this 15th day of August, 1979, by LULLY DALE FARMS, LTD., a Florida Limited Partnership, and FIRST FEDERAL SAVINGS AND LOAN ASSOCIATION OF LAKE CITY, a Florida Corporation, and their respective partners and SECRETARY OF MASSSEY ASSOCIATES, INC.

ACKNOWLEDGEMENT STATE OF FLORIDA COUNTY OF SUWANNEE
The foregoing instrument was acknowledged before me this 15th day of August, 1979, by LULLY DALE FARMS, LTD., a Florida Limited Partnership, and FIRST FEDERAL SAVINGS AND LOAN ASSOCIATION OF LAKE CITY, a Florida Corporation, and their respective partners and SECRETARY OF MASSSEY ASSOCIATES, INC.

Signed: [Signature]
Fid. Reg. Cert. No. 1253
Date: Aug. 15, 1979