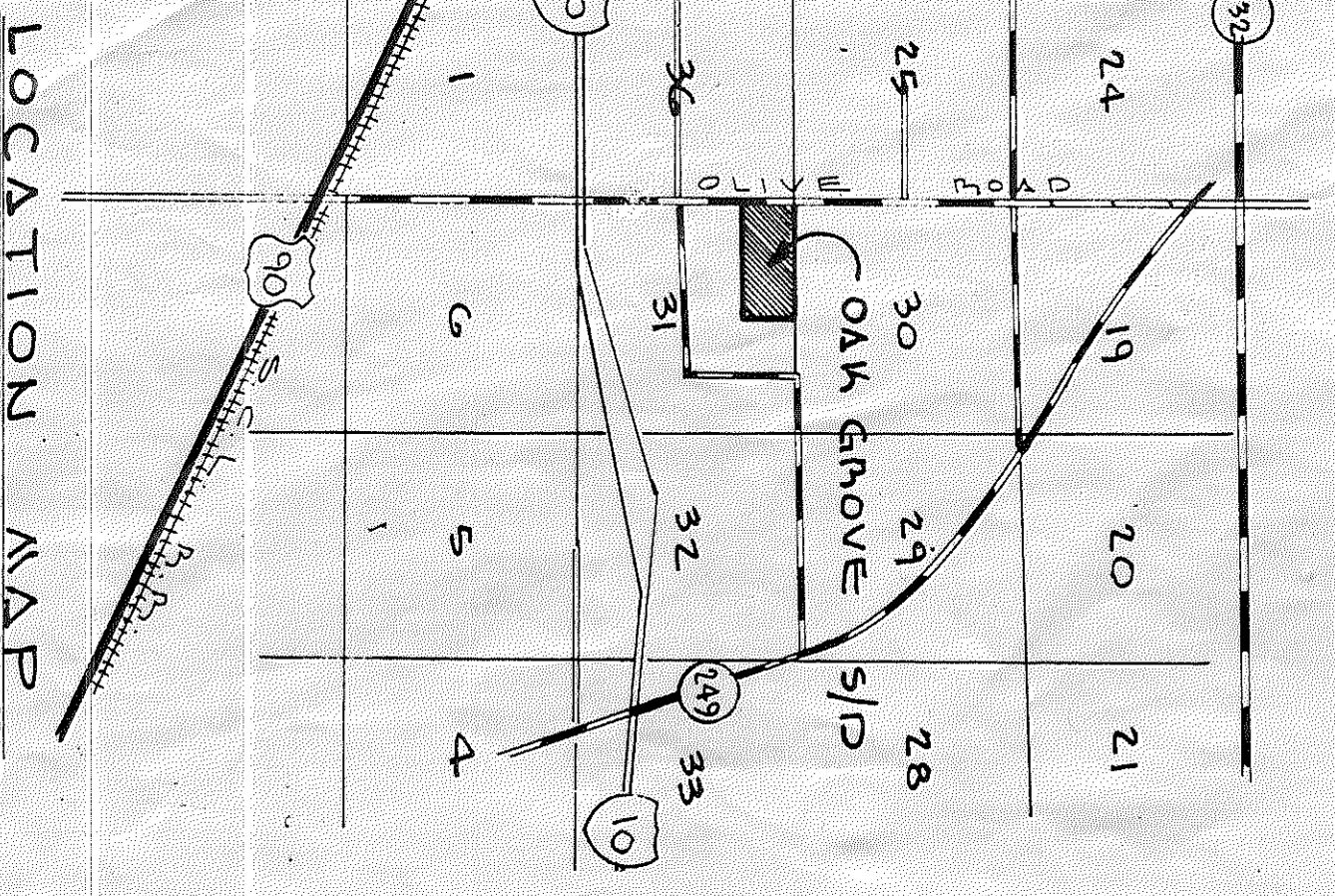
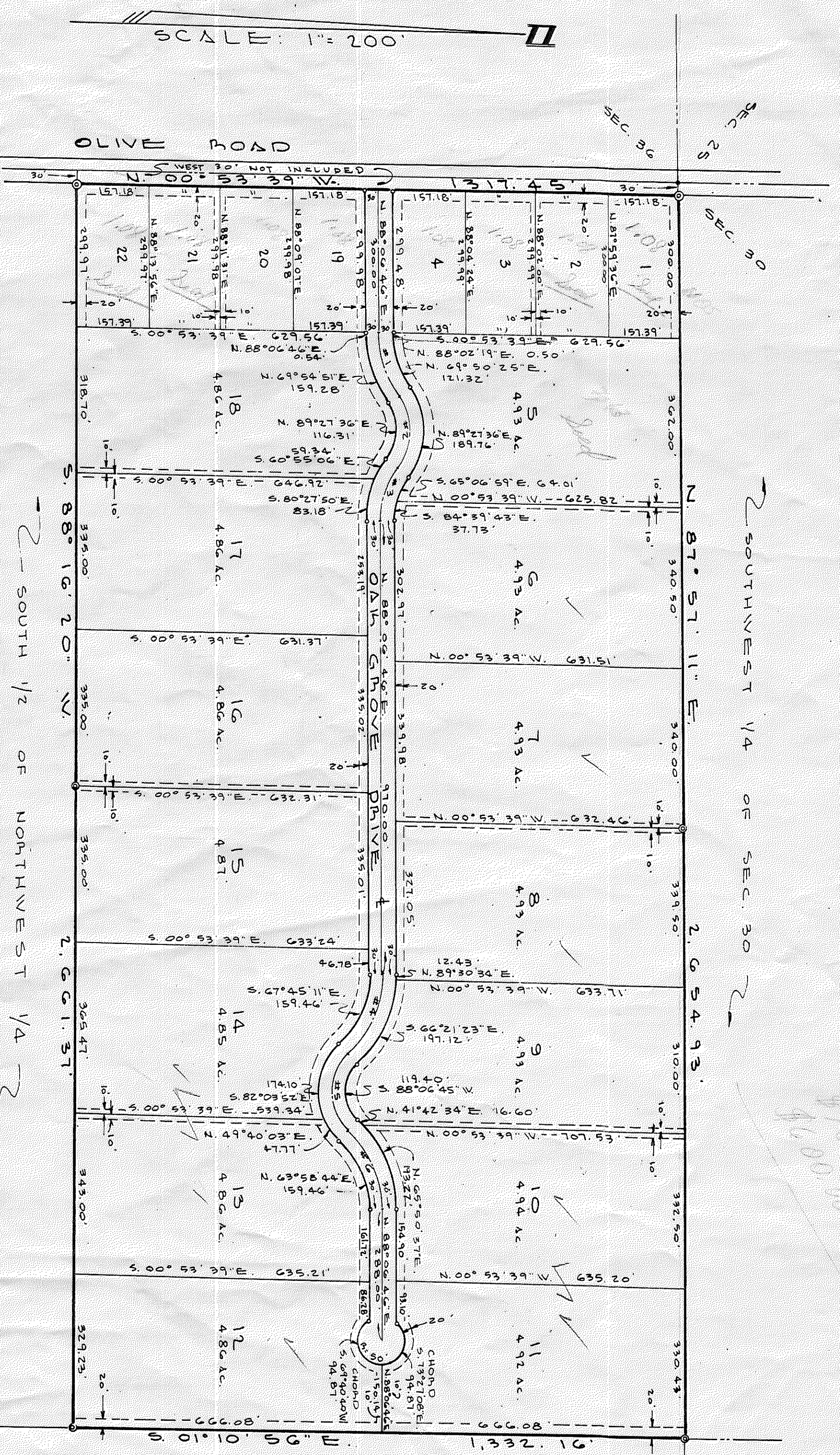
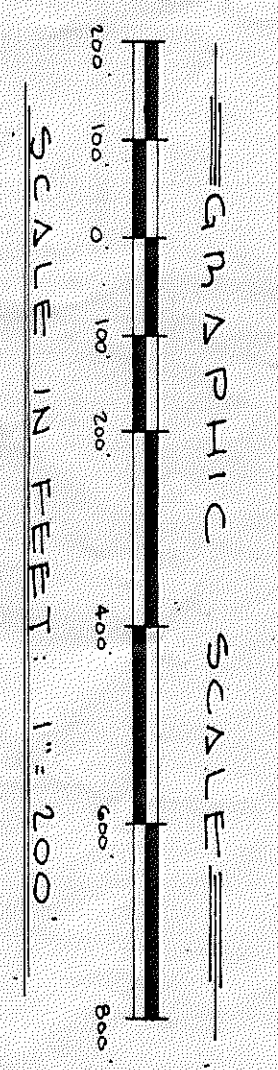


OAK GROVE SUBDIVISION

SITUATED IN THE NORTH 1/2 OF THE NORTHWEST 1/4 OF SECTION 31, TOWNSHIP 1 SOUTH, RANGE 13 EAST, SUWANNEE COUNTY, FLORIDA.



CURVE #	DELTA	RADIUS	TANGENT	CHORD BEARING & DISTANCE
1	3° 23' 43"	225.00'	142.930'	N 64° 54' 51" E - 140.591'
2	15° 23' 16"	145.00'	164.681'	N 89° 21' 30" E - 153.093'
3	31° 05' 27"	180.00'	122.808'	S 12° 25' 30" E - 126.040'
4	48° 16' 06"	225.00'	181.547'	S 67° 45' 11" E - 183.115'
5	96° 32' 11"	110.00'	123.321'	N 83° 02' 44" E - 164.111'
6	48° 16' 06"	225.00'	181.547'	N 07° 58' 43" E - 183.115'

LEGEND:

- DENOTES P.M. (PERMANENT REFERENCE MONUMENTS)
- DENOTES P.C.P. (PERMANENT CONTROL POINT)
- ==== DENOTES UTILITY EASEMENT, WIDTH AS SHOWN. (20')
- ==== DENOTES SHOW ARE PROJECTED FROM INTERSTATE 10 DATA.

DESCRIPTION

THE NORTH 1/2 OF THE NORTHWEST 1/4 OF SECTION 31, TOWNSHIP 1 SOUTH, RANGE 13 EAST, SUWANNEE COUNTY, FLORIDA, LESS AND EXCEPT THE WEST 30 FEET THEREOF.

ADOPTION AND DEDICATION

WE HEREBY CERTIFY THAT WE ARE THE LAWFUL OWNERS OF THE LANDS DESCRIBED IN THE CAPTION ABOVE AND THAT WE HAVE CAUSED THE SAME TO BE SURVEYED AND SUBDIVIDED AND THIS PLAN, OAK GROVE SUBDIVISION IS MADE IN ACCORDANCE WITH SAID SURVEY, IS HEREBY ADOPTED AS THE TRUE AND CORRECT PLAN OF SAID LANDS AND THAT ALL DRIVES AND EASEMENTS SHOWN UPON THIS PLAN ARE IRREVOCABLY AND WITHOUT RESERVATION DEDICATED TO THE PUBLIC.

IN WITNESS SIGNED THIS 26th DAY OF November, A.D. 1979.

OWNER: GRACE HARRELL NORMAN
 MARY KATHY GATHLENE WALL

STATE OF FLORIDA, COUNTY OF SUWANNEE

I HEREBY CERTIFY THAT ON THIS DAY PERSONALLY APPEARED BEFORE ME, AN OFFICER DULY AUTHORIZED TO ADMINISTER OATHS AND TAKE ACKNOWLEDGMENTS, GRACE HARRELL NORMAN AND MARY KATHY GATHLENE WALL, TO ME WELL KNOWN TO BE THE PERSONS DESCRIBED IN AND WHO EXECUTED THE FOREGOING DEDICATION AND ACKNOWLEDGED BEFORE ME THAT THEY EXECUTED THE SAME FOR THE USES AND PURPOSES THEREIN EXPRESSED.

DEDICATION FOR MORTGAGEE

THIS IS TO CERTIFY THAT THE FIRST NATIONAL BANK OF LIVE OAK, A CORPORATION UNDER THE LAWS OF THE UNITED STATES OF AMERICA, BEING A MORTGAGEE OF THE LANDS DESCRIBED IN THE FOREGOING CAPTION OF THIS PLAN DO HEREBY JOIN IN AND MAKE THEMSELVES A PARTY OF THE DEDICATION OF SAID LANDS AND PLAN KNOWN AS OAK GROVE SUBDIVISION FOR THE USES AND PURPOSES THEREIN EXPRESSED AND DEDICATE ALL DRIVES AND EASEMENTS SHOWN ON THIS PLAN TO THE PUBLIC.

IN WITNESS WHEREOF, THE FIRST NATIONAL BANK OF LIVE OAK, HAS CAUSED THESE PRESENT TO BE SIGNED BY ITS VICE PRESIDENT, CLARK P. GRAPS, AND ITS ASSISTANT CASHIER, CAROL A. BENNETT, BY AND WITH THE AUTHORITY OF ITS BOARD OF DIRECTORS IN ITS NAME AND WITH ITS CORPORATE SEAL AFFIXED THIS 30th DAY OF December, A.D. 1979.

CLARK P. GRAPS, VICE PRESIDENT
 CAROL A. BENNETT, ASSISTANT CASHIER

STATE OF FLORIDA, COUNTY OF SUWANNEE

I HEREBY CERTIFY THAT ON THIS DAY PERSONALLY APPEARED BEFORE ME, AN OFFICER DULY AUTHORIZED TO ADMINISTER OATHS AND TAKE ACKNOWLEDGMENTS, CLARK P. GRAPS, VICE PRESIDENT, AND CAROL A. BENNETT, ASSISTANT CASHIER OF THE FIRST NATIONAL BANK OF LIVE OAK, A CORPORATION UNDER THE LAWS OF THE UNITED STATES OF AMERICA, TO ME WELL KNOWN TO BE THE PERSONS WHO EXECUTED THE SAME FREELY AND VOLUNTARILY AS THE ACT AND DEED OF SAID CORPORATION WITH THE OFFICIAL SEAL OF SAID CORPORATION AFFIXED THERETO.

IN WITNESS WHEREOF, THE NORTH FLORIDA PRODUCTION CREDIT ASSOCIATION, HAS CAUSED THESE PRESENT TO BE SIGNED BY ITS PRESIDENT, CHARLES R. THOMAS AND VICE PRESIDENT, WILBUR J. ARNETT, BY AND WITH THE AUTHORITY OF ITS BOARD OF DIRECTORS IN ITS NAME AND WITH ITS CORPORATE SEAL AFFIXED, THIS 30th DAY OF December, A.D. 1979.

CHARLES R. THOMAS, PRESIDENT
 WILBUR J. ARNETT, VICE PRESIDENT

DEDICATION FOR MORTGAGEE

THIS IS TO CERTIFY THAT THE NORTH FLORIDA PRODUCTION CREDIT ASSOCIATION, A CORPORATION UNDER THE LAWS OF THE STATE OF FLORIDA, BEING A MORTGAGEE OF THE LANDS DESCRIBED IN THE FOREGOING CAPTION OF THIS PLAN DO HEREBY JOIN IN AND MAKE THEMSELVES A PARTY OF THE DEDICATION OF SAID LANDS AND PLAN KNOWN AS OAK GROVE SUBDIVISION FOR THE USES AND PURPOSES THEREIN EXPRESSED AND DEDICATE ALL DRIVES AND EASEMENTS SHOWN ON THIS PLAN TO THE PUBLIC.

IN WITNESS WHEREOF, THE NORTH FLORIDA PRODUCTION CREDIT ASSOCIATION, HAS CAUSED THESE PRESENT TO BE SIGNED BY ITS PRESIDENT, CHARLES R. THOMAS AND VICE PRESIDENT, WILBUR J. ARNETT, BY AND WITH THE AUTHORITY OF ITS BOARD OF DIRECTORS IN ITS NAME AND WITH ITS CORPORATE SEAL AFFIXED, THIS 30th DAY OF December, A.D. 1979.

CHARLES R. THOMAS, PRESIDENT
 WILBUR J. ARNETT, VICE PRESIDENT

STATE OF FLORIDA, COUNTY OF SUWANNEE

I HEREBY CERTIFY THAT ON THIS DAY PERSONALLY APPEARED BEFORE ME, AN OFFICER DULY AUTHORIZED TO ADMINISTER OATHS AND TAKE ACKNOWLEDGMENTS, CHARLES R. THOMAS, PRESIDENT AND WILBUR J. ARNETT, VICE PRESIDENT, OF THE NORTH FLORIDA PRODUCTION CREDIT ASSOCIATION, A CORPORATION UNDER THE LAWS OF THE STATE OF FLORIDA, TO ME WELL KNOWN TO BE THE PERSONS WHO EXECUTED THE SAME FREELY AND VOLUNTARILY AS THE ACT AND DEED OF SAID CORPORATION WITH THE OFFICIAL SEAL OF SAID CORPORATION AFFIXED THERETO.

IN WITNESS MY SIGNATURE AND OFFICIAL SEAL AT LIVE OAK, IN THE COUNTY OF SUWANNEE AND THE STATE OF FLORIDA, THIS 30th DAY OF December, A.D. 1979.

COUNTY COMMISSION APPROVAL

EXAMINED AND APPROVED BY THE COUNTY COMMISSION OF SUWANNEE COUNTY, FLORIDA, THIS 30th DAY OF December, A.D. 1979.

CLERK'S CERTIFICATE
 THIS IS TO CERTIFY THAT THIS PLAN HAS BEEN FILED FOR RECORD AND RECORDED IN THE PLAT BOOK _____ PAGE _____ OF THE PUBLIC RECORDS OF SUWANNEE COUNTY, FLORIDA, THIS 30th DAY OF December, A.D. 1979.

SURVEYOR'S CERTIFICATE
 I HEREBY CERTIFY THAT THIS PLAN IS A CORRECT REPRESENTATION OF THE LAND AS SURVEYED UNDER MY DIRECTION AND SUPERVISION AND THAT THE SURVEY DATA COMPLIES WITH THE REQUIREMENTS OF CHAPTER NO. 177 OF THE LAWS OF THE STATE OF FLORIDA, AND THAT PERMANENT REFERENCE MONUMENTS AND PERMANENT CONTROL POINTS HAVE BEEN SET ACCORDING TO THE ABOVE REFERENCED LAWS SHOWN. SIGNED THIS 26th DAY OF November, A.D. 1979.

SIGNED: J. Sherman Frier, F.L.S.
 FLORIDA CERTIFICATE NO. 2245
 ALL STATE LAND SURVEYORS, INC.
 P.O. BOX 580
 LIVE OAK, FLORIDA 32060