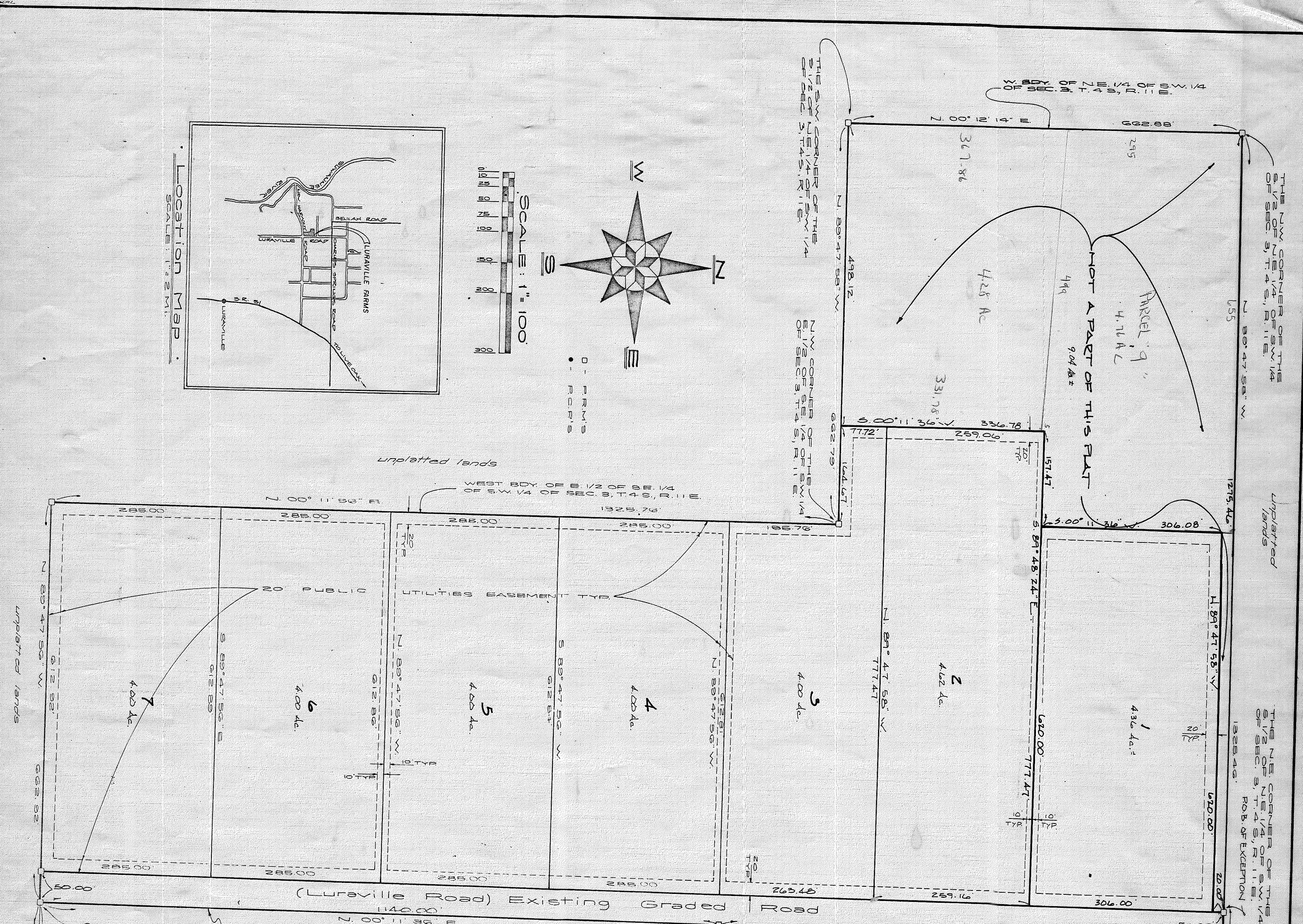


Luraville Farms



1600th RA
04-0885

LURAVILLE FARMS
A SUBDIVISION IN THE SW 1/4 OF
SECTION 3, TOWNSHIP 4 SOUTH,
RANGE 11 EAST, SUWANNEE
COUNTY, FLORIDA

LEGAL DESCRIPTION:

THE SW 1/2 OF THE SE 1/4 OF THE SW 1/4 AND THE SW 1/2 OF THE NE 1/4 OF THE SW 1/4 LESS AN INTEREST IN TOWNSHIP 4 SOUTH, RANGE 11 EAST, SUWANNEE COUNTY, FLORIDA

ADOPTION AND DEDICATION:

THE COURT AND I HEREBY CERTIFY THAT THE SURVEY AND DEDICATION OF THE LURAVILLE FARMS AS DESCRIBED ABOVE IS IN ACCORDANCE WITH THE PROVISIONS OF THE CONSTITUTION AND LAWS OF THE STATE OF FLORIDA.

Jack Nutt
Deputy Clerk
Suwannee County
1987

ACKNOWLEDGEMENT:

I, JACK NUTT, DEPUTY CLERK OF SUWANNEE COUNTY, FLORIDA, DO HEREBY CERTIFY THAT THE SURVEY AND DEDICATION OF THE LURAVILLE FARMS AS DESCRIBED ABOVE IS IN ACCORDANCE WITH THE PROVISIONS OF THE CONSTITUTION AND LAWS OF THE STATE OF FLORIDA.

SUWANNEE COUNTY COMMISSIONER'S APPROVAL:

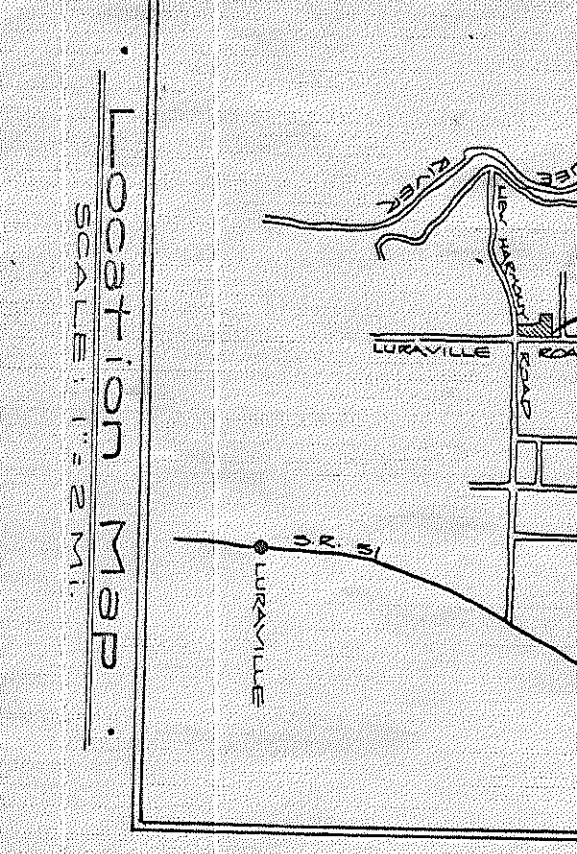
Approved by the Board of County Commissioners of Suwannee County, Florida, this 12th day of September, 1987.
Susan
Chairman

SUWANNEE COUNTY CLERK'S CERTIFICATE:

This plat has been filed for record and recorded in the Public Records of Suwannee County, Florida, this 14th day of October, 1987.
Jack Nutt
Deputy Clerk

SURVEYOR'S CERTIFICATE:

I, WAYS CLAUSS, SURVEYOR, DO HEREBY CERTIFY THAT THIS PLAT OF "LURAVILLE FARMS" IS A TRUE AND CORRECT REPRESENTATION OF THE HEREON DESCRIBED TRACT AND ACCORDS TO A SURVEY MADE BY ME OR MY DEPUTY OR ASSISTANT (F.R.S.) AND THAT THE PERMANENT POINTS AND MONUMENTS DESCRIBED HEREON AS CALLED FOR UNDER THE POINTS (C.S. 2) AND LINE MONUMENTS (C.S. 3) ARE LOCATED AND THE SURVEY IS IN ACCORDANCE WITH ALL THE REQUIREMENTS OF CHAPTER 177, F.S., AND CHAPTER 214, F.S., RESULTING TO FC 42-087.
Ways Clauss
Surveyor
1987



NOTE:
THIS LINE IS A MINIMUM OF
10 FEET WIDE OR MORE LINE OF
LURAVILLE FARMS.

1987

Oct 14

There may be additional restrictions that are not recorded on this plat that may be found in the Public Records of this county.