

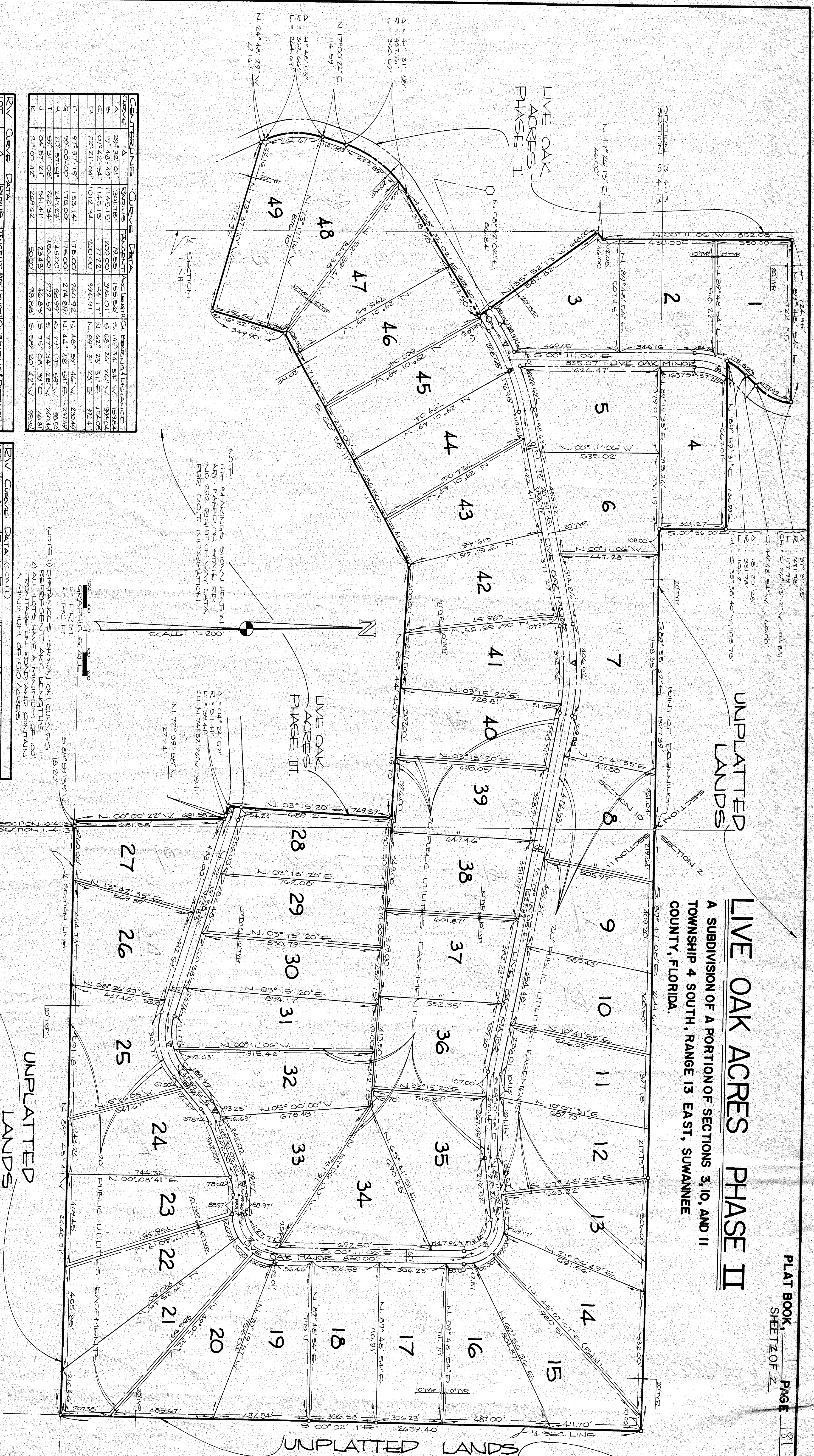
Live Oak Acres Phase II

UNPLATTED LANDS

LIVE OAK ACRES PHASE II

A SUBDIVISION OF A PORTION OF SECTIONS 3, 10, AND 11 TOWNSHIP 4 SOUTH, RANGE 13 EAST, SUWANNEE COUNTY, FLORIDA.

PLAT BOOK PAGE 18
SHEET 2 OF 2



CURVE	DATA	BEARING	LENGTH	CHORD	BEARING	CHORD	BEARING	CHORD
A	31° 31' 25"	171.78	92.32	171.78	N 171° 02' 10" E	171.78	171.78	171.78
B	104° 38' 17"	331.78	43.41	331.78	N 101° 06' 09" E	331.78	331.78	331.78
C	33° 09' 28"	211.18	82.91	211.18	N 101° 06' 09" E	211.18	211.18	211.18
D	09° 52' 57"	115.15	101.00	115.15	N 173° 24' 23" E	115.15	115.15	115.15
E	21° 48' 25"	183.14	68.17	183.14	S 85° 59' 13" E	183.14	183.14	183.14
F	34° 17' 07"	183.14	68.17	183.14	S 52° 29' 14" E	183.14	183.14	183.14
G	04° 09' 07"	208.00	11.92	208.00	S 89° 51' 52" E	208.00	208.00	208.00
H	21° 48' 25"	208.00	61.02	208.00	S 41° 53' 28" E	208.00	208.00	208.00
I	21° 48' 25"	208.00	61.02	208.00	S 41° 53' 28" E	208.00	208.00	208.00
J	20° 51' 51"	213.23	29.45	213.23	N 75° 15' 52" E	213.23	213.23	213.23
K	20° 51' 51"	213.23	29.45	213.23	N 75° 15' 52" E	213.23	213.23	213.23

CURVE	DATA	BEARING	LENGTH	CHORD	BEARING	CHORD	BEARING	CHORD
1	21° 48' 25"	171.78	92.32	171.78	N 171° 02' 10" E	171.78	171.78	171.78
2	104° 38' 17"	331.78	43.41	331.78	N 101° 06' 09" E	331.78	331.78	331.78
3	33° 09' 28"	211.18	82.91	211.18	N 101° 06' 09" E	211.18	211.18	211.18
4	09° 52' 57"	115.15	101.00	115.15	N 173° 24' 23" E	115.15	115.15	115.15
5	21° 48' 25"	183.14	68.17	183.14	S 85° 59' 13" E	183.14	183.14	183.14
6	34° 17' 07"	183.14	68.17	183.14	S 52° 29' 14" E	183.14	183.14	183.14
7	04° 09' 07"	208.00	11.92	208.00	S 89° 51' 52" E	208.00	208.00	208.00
8	21° 48' 25"	208.00	61.02	208.00	S 41° 53' 28" E	208.00	208.00	208.00
9	21° 48' 25"	208.00	61.02	208.00	S 41° 53' 28" E	208.00	208.00	208.00
10	20° 51' 51"	213.23	29.45	213.23	N 75° 15' 52" E	213.23	213.23	213.23
11	20° 51' 51"	213.23	29.45	213.23	N 75° 15' 52" E	213.23	213.23	213.23

NOTE: 1) DISTANCES SHOWN ON CURVES REPRESENT ARC LENGTHS.
2) ALL LOTS HAVE A MINIMUM OF 100' FRONTAGE ON ROAD AND CONTAIN A MINIMUM OF 350 ACRES.

NOTE: THE BEARINGS SHOWN HEREIN ARE BASED ON STATE PLAT NO. 252 SIGHT OF NAVY DATA PERM. DOC. NUMBER KNOWN.