

Lewis Subdivision

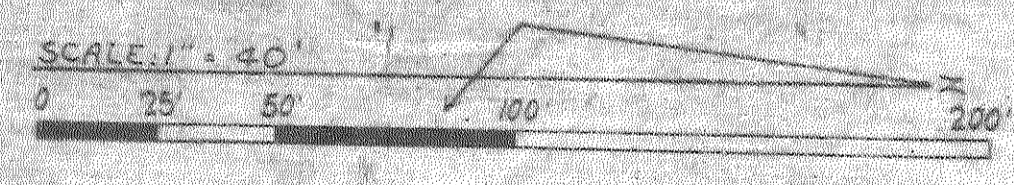
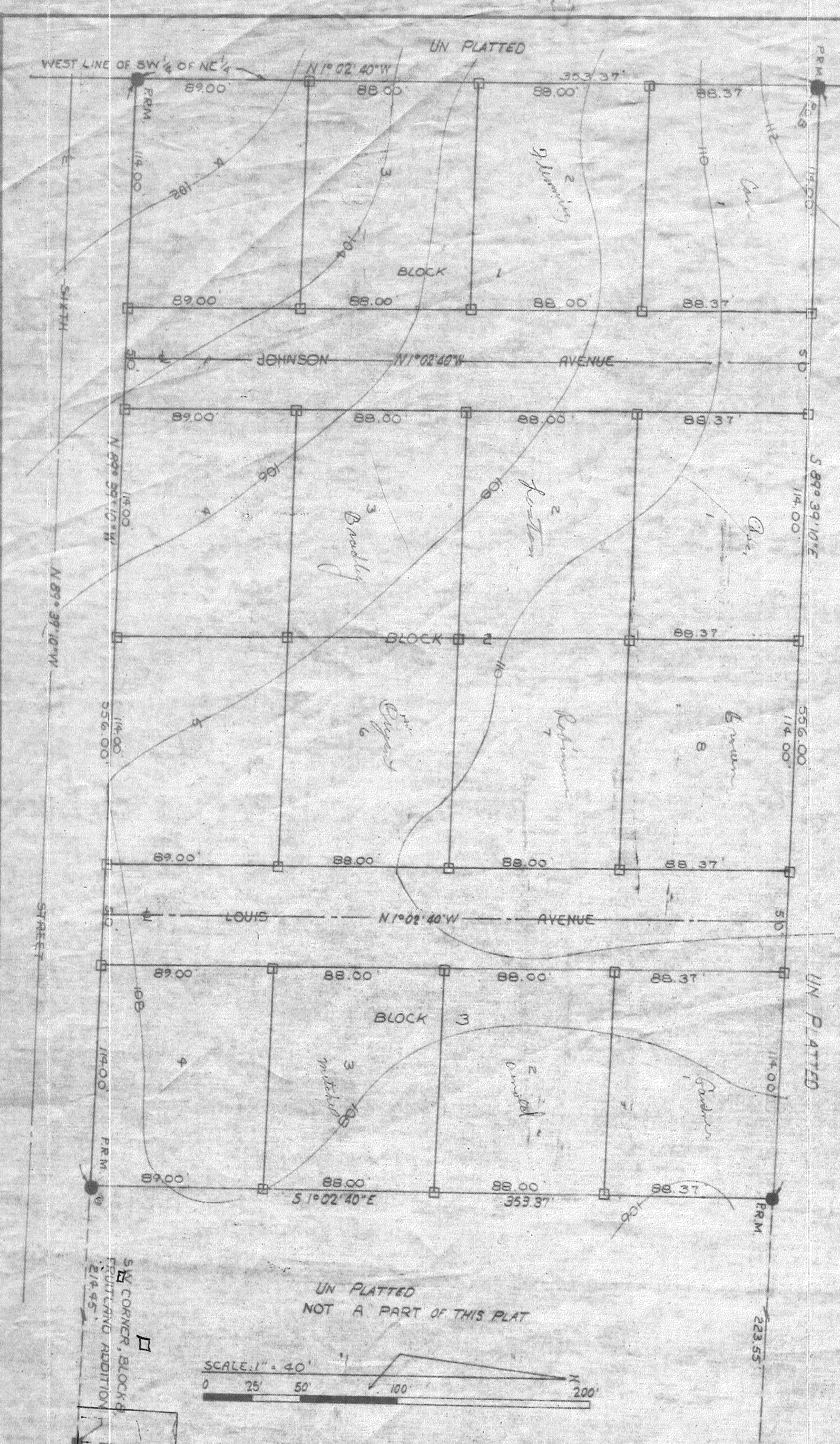
LEWIS SUBDIVISION

CITY OF LIVE OAK, SUWANNEE COUNTY, FLORIDA

A SUBDIVISION OF THE WEST 556 FEET OF THAT PART OF THE SW 1/4 OF NE 1/4, SECTION 22, TOWNSHIP 2-SOUTH, RANGE 13-EAST CITY OF LIVE OAK, SUWANNEE COUNTY, FLORIDA

DESCRIPTION: COMMENCE AT THE NW CORNER OF THE SW 1/4 OF THE NE 1/4, SECTION 22, TOWNSHIP 2-SOUTH, RANGE 13-EAST, AND RUN S 7° 02' 40" E, ALONG THE WEST LINE OF SAID SW 1/4 OF THE NE 1/4, 174.00 FEET TO A CONCRETE P.R.M. AND TO THE POINT OF BEGINNING, AND RUN THENCE S 89° 39' 10" E A DISTANCE OF 556.00 FEET TO A CONCRETE P.R.M., THENCE S 1° 02' 40" E, 353.37 FEET, TO THE NORTH LINE OF SIXTH STREET, AND TO A CONCRETE P.R.M., THENCE N 89° 39' 10" W, ALONG SAID NORTH LINE 556.00 FEET TO THE WEST LINE OF SAID SW 1/4 OF THE NE 1/4, TO A CONCRETE P.R.M., THENCE N 1° 02' 40" W SAID LAND LING IN A PART OF THE SW 1/4 OF THE NE 1/4, SECTION 22, TOWNSHIP 2-SOUTH, RANGE 13-EAST, CITY OF LIVE OAK, SUWANNEE COUNTY, FLORIDA.

- LEGEND
- 1. 6" DIA CONCRETE MONUMENT WITH METAL CAP IMBEDDED IN TOP - PERMANENT REFERENCE MONUMENT
 - 2. 3" CONCRETE MONUMENT FOUND
 - 3. 4" CONCRETE MONUMENT, SET
 - 4. P.R.M.'S PLACED AS SHOWN
 - 5. BEARINGS PROJECTED FROM FLORIDA STATE PLANE COORDINATE SYSTEM



DEDICATION:
 KNOW ALL MEN BY THESE PRESENTS THAT RALPH H. COX AND HIS WIFE, MELBA S. COX, OWNERS, HAVE CAUSED THE LANDS HEREON DESCRIBED TO BE SURVEYED, LAYED OUT, SUBDIVIDED AND PLATTED, TO BE KNOWN AS 'LEWIS SUBDIVISION' AND DEDICATE TO THE USE OF THE PUBLIC THE STREETS SHOWN HEREON

WITNESS _____ SIGNED _____
 WITNESS _____ SIGNED _____
 DATE _____

ACKNOWLEDGEMENT:
 STATE OF FLORIDA:
 COUNTY OF SUWANNEE:
 ON THIS _____ DAY OF _____, 1972, PERSONALLY APPEARED BEFORE ME RALPH H. COX AND HIS WIFE, MELBA S. COX, TO ME WELL KNOWN AND KNOWN TO ME TO BE THE PERSONS DESCRIBED IN AND WHO EXECUTED THE FOREGOING DEDICATION FOR THE PURPOSES THEREIN EXPRESSED.

SIGNED _____
 NOTARY PUBLIC, NY. COMMISSION EXPIRES _____

SURVEYOR'S CERTIFICATE:
 I HEREBY CERTIFY THAT I AM A DULY AUTHORIZED AND QUALIFIED LAND SURVEYOR AND THAT THIS PLAT IS A TRUE AND CORRECT REPRESENTATION OF THE LANDS SURVEYED UNDER MY DIRECTION. ALL DATA COMPILES WITH FLORIDA STATUTE CHAPTER 171. I FURTHER CERTIFY THAT CONCRETE P.R.M.'S HAVE BEEN PLACED AS SHOWN HERE ON.

DATE OF SURVEY, NOVEMBER 22, 1972. SIGNED *Zemuel Bell*
 NORMAND HODGES, SURVEYOR
 FLORIDA CERTIFICATE NO. 1827

APPROVED BY BOARD OF COUNTY COMMISSIONERS
 SUWANNEE COUNTY, FLORIDA
 SIGNED _____ CHAIRMAN
 ATTEST _____ CLERK
 DATE _____

APPROVED BY CITY COUNCIL, CITY OF LIVE OAK, FLORIDA
 SIGNED _____ MAYOR
 ATTEST _____ CLERK
 DATE _____

UN PLATTED
 NOT A PART OF THIS PLAT
 WEST LINE OF FRUITLAND ADDITION
 FRUITLAND ADDITION - PLATBOOK 1, PAGES 18 + 19
Block 8 Fruitland