

ICHETUCKNEE RIVER ESTATES.

FIRST ADDITION.

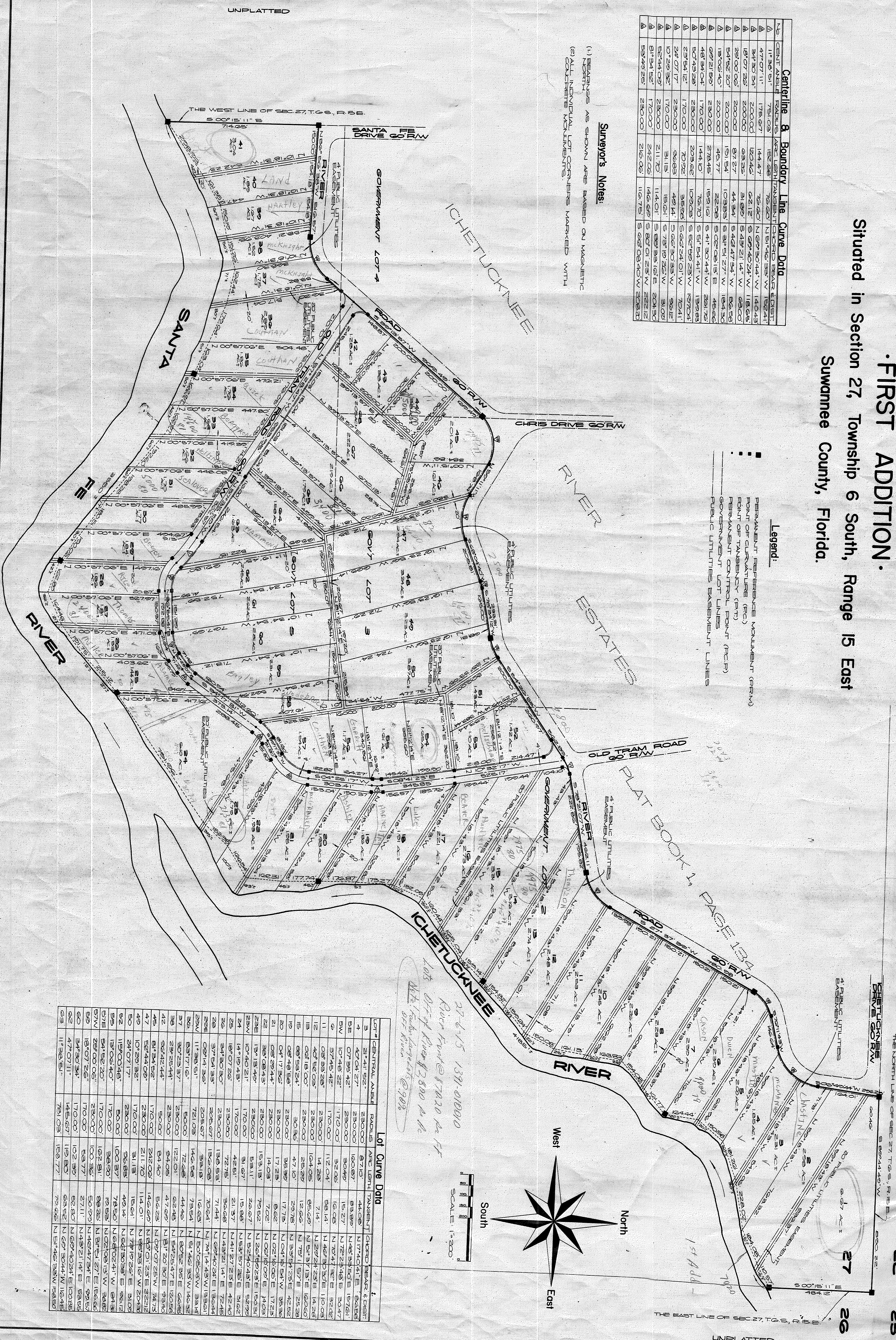
Situated in Section 27, Township 6 South, Range 15 East
Suwannee County, Florida.

Centerline & Boundary Line Curve Data

NO	CENT ANGLE	RADIUS	ARC LENGTH	TANGENT	CHORD BEAR	EXIST.
1	117°38'51"	751.03	152.28	75.60	N 51°42'33"W	152.21
2	47°07'11"	178.27	144.47	120.46	S 69°30'44"W	142.43
3	84°30'54"	200.00	120.46	62.12	S 49°40'24"W	118.62
4	18°07'28"	200.00	63.26	31.89	S 49°21'47"W	63.00
5	28°00'06"	200.00	87.27	44.24	S 48°47'34"W	86.93
6	54°52'20"	200.00	151.54	103.93	S 31°51'27"W	151.50
7	130°24'07"	200.00	228.28	159.12	S 02°08'18"E	228.28
8	18°06'40"	200.00	45.77	23.45	S 41°30'44"W	45.62
9	69°21'52"	230.00	144.10	78.70	S 51°54'41"W	139.93
10	48°34'04"	170.00	102.92	59.63	S 66°52'23"W	102.92
11	24°07'17"	170.00	51.13	29.81	S 66°30'33"W	51.13
12	10°22'32"	170.00	21.17	11.41	S 69°33'16"E	21.17
13	52°44'09"	170.00	21.17	11.41	S 80°01'25"W	21.17
14	51°24'52"	170.00	22.02	12.06	S 80°01'25"W	22.02
15	59°49'25"	230.00	216.06	116.75	S 66°08'40"W	208.32

Surveyor's Notes:
(1) BEARINGS AS SHOWN ARE BASED ON MAGNETIC NORTH.
(2) ALL INDIVIDUAL LOT CORNERS MARKED WITH CONCRETE MONUMENTS.

Legend:
 ■ PERMANENT REFERENCE MONUMENT (PRM)
 ● POINT OF CURVATURE (PC)
 ● POINT OF TANGENCY (PT)
 ● PERMANENT CONTROL POINT (PCP)
 --- GOVERNMENT LOT LINES
 --- PUBLIC UTILITIES BASEMENT LINES



Lot Curve Data

LOT #	CENTRAL ANGLE	RADIUS	ARC LENGTH	TANGENT	CHORD BEAR & DIST.
1	21°41'52"	230.00	87.07	44.03	N 17°40'41"E 86.62
2	47°07'11"	178.27	144.47	120.46	S 69°30'44"W 142.43
3	84°30'54"	200.00	120.46	62.12	S 49°40'24"W 118.62
4	18°07'28"	200.00	63.26	31.89	S 49°21'47"W 63.00
5	28°00'06"	200.00	87.27	44.24	S 48°47'34"W 86.93
6	54°52'20"	200.00	151.54	103.93	S 31°51'27"W 151.50
7	130°24'07"	200.00	228.28	159.12	S 02°08'18"E 228.28
8	18°06'40"	200.00	45.77	23.45	S 41°30'44"W 45.62
9	69°21'52"	230.00	144.10	78.70	S 51°54'41"W 139.93
10	48°34'04"	170.00	102.92	59.63	S 66°52'23"W 102.92
11	24°07'17"	170.00	51.13	29.81	S 66°30'33"W 51.13
12	10°22'32"	170.00	21.17	11.41	S 69°33'16"E 21.17
13	52°44'09"	170.00	21.17	11.41	S 80°01'25"W 21.17
14	51°24'52"	170.00	22.02	12.06	S 80°01'25"W 22.02
15	59°49'25"	230.00	216.06	116.75	S 66°08'40"W 208.32

27-6-15 1391-010010
 River front @ 1700 ft
 lots 1-15 along river @ 2500 ft
 W/F: [unclear]@999