

GOLDEN GLEN

SITUATED IN THE SOUTHEAST 1/4 AND IN THE EAST 1/2 OF THE EAST 1/2 OF THE SOUTHWEST 1/4 OF SECTION 20, TOWNSHIP 2 SOUTH, RANGE 12 EAST, SUWANNEE COUNTY, FLORIDA.

DESCRIPTION: BLOCK 1
 PART OF THE SOUTHWEST 1/4 OF SECTION 20, TOWNSHIP 2 SOUTH, RANGE 12 EAST, SUWANNEE COUNTY, FLORIDA, BEING MORE PARTICULARLY DESCRIBED AS FOLLOWS: FROM POINT OF REFERENCE COMMENCE AT THE SOUTHWEST CORNER OF SAID SECTION 20, THENCE RUN SOUTH 89° 07' 56" WEST ALONG THE SOUTH LINE OF SAID SECTION 20, A DISTANCE OF 1381 FEET; THENCE RUN NORTH 01° 06' 16" WEST, A DISTANCE OF 40.00 FEET TO THE POINT OF BEGINNING; THENCE RUN NORTH 89° 07' 56" WEST ALONG THE NORTH RIGHT-OF-WAY LINE OF SECTION 20, A DISTANCE OF 1490.28 FEET; THENCE RUN NORTH 01° 09' 42" WEST, A DISTANCE OF 68.79 FEET; THENCE RUN SOUTH 89° 07' 56" WEST ALONG THE SOUTH LINE OF SAID SECTION 20, A DISTANCE OF 617.04 FEET; THENCE RUN NORTH 89° 07' 56" WEST ALONG SAID SECTION 20, A DISTANCE OF 1976.25 FEET TO THE POINT OF BEGINNING; CONTAINING 47.915 ACRES MORE OR LESS.

DESCRIPTION: BLOCK 2
 PART OF THE SOUTHWEST 1/4 OF SECTION 20, TOWNSHIP 2 SOUTH, RANGE 12 EAST, SUWANNEE COUNTY, FLORIDA, BEING MORE PARTICULARLY DESCRIBED AS FOLLOWS: FROM POINT OF REFERENCE COMMENCE AT THE SOUTHWEST CORNER OF SAID SECTION 20, THENCE RUN SOUTH 89° 07' 56" WEST ALONG THE SOUTH LINE OF SAID SECTION 20, A DISTANCE OF 1381 FEET; THENCE RUN NORTH 01° 06' 16" WEST, A DISTANCE OF 41.25 FEET TO THE POINT OF BEGINNING; THENCE RUN NORTH 01° 09' 42" WEST, A DISTANCE OF 68.79 FEET; THENCE RUN SOUTH 89° 07' 56" WEST ALONG THE SOUTH LINE OF SAID SECTION 20, A DISTANCE OF 617.04 FEET; THENCE RUN NORTH 89° 07' 56" WEST ALONG SAID SECTION 20, A DISTANCE OF 1976.25 FEET TO THE POINT OF BEGINNING; CONTAINING 18.044 ACRES MORE OR LESS.

DESCRIPTION: BLOCK 3
 PART OF THE EAST 1/2 OF THE SOUTHWEST 1/4 OF SECTION 20, TOWNSHIP 2 SOUTH, RANGE 12 EAST, SUWANNEE COUNTY, FLORIDA, BEING MORE PARTICULARLY DESCRIBED AS FOLLOWS: FROM POINT OF REFERENCE COMMENCE AT THE SOUTHWEST CORNER OF SAID SECTION 20, THENCE RUN SOUTH 89° 07' 56" WEST ALONG THE SOUTH LINE OF SAID SECTION 20, A DISTANCE OF 1381 FEET; THENCE RUN NORTH 01° 06' 16" WEST, A DISTANCE OF 41.25 FEET TO THE POINT OF BEGINNING; THENCE RUN NORTH 01° 09' 42" WEST, A DISTANCE OF 68.79 FEET; THENCE RUN SOUTH 89° 07' 56" WEST ALONG THE SOUTH LINE OF SAID SECTION 20, A DISTANCE OF 617.04 FEET; THENCE RUN NORTH 89° 07' 56" WEST ALONG SAID SECTION 20, A DISTANCE OF 1976.25 FEET TO THE POINT OF BEGINNING; CONTAINING 1.01 ACRES MORE OR LESS.

ADOPTION AND DEDICATION:
 KNOW ALL MEN BY THESE PRESENTS, THAT PATTEN CORPORATION OF VIRGINIA, AN ATLANTIC TIMBER COMPANY, A CORPORATION INCORPORATED UNDER THE LAWS OF THE STATE OF VIRGINIA, HAS CAUSED THE LANDS HEREIN DESCRIBED TO BE SURVEYED, SUBDIVIDED AND PLATTED, TO BE KNOWN AS GOLDEN GLEN AND THAT THE EASEMENTS AS SHOWN ARE HEREBY DEDICATED TO THE PERPETUAL USE OF THE PUBLIC FOR PROPER USES AND PURPOSES HEREON STATED.

WITNESS MY HAND AND SEAL AT MIAMI CITY, STATE OF FLORIDA, THIS 20th DAY OF JANUARY, A.D. 1987.

STATE OF FLORIDA, COUNTY OF COLUMBIA:
 I HEREBY CERTIFY THAT ON THIS 20th DAY OF JANUARY, A.D. 1987, JERRY L. WILSON, VICE-PRESIDENT OF PATTEN CORPORATION OF VIRGINIA, THE ATLANTIC TIMBER COMPANY, TO ME KNOWN TO BE THE INDIVIDUAL DESCRIBED IN AND WHO EXECUTED THE FOREGOING DEDICATION, AND HE ACKNOWLEDGED EXECUTION THEREOF.

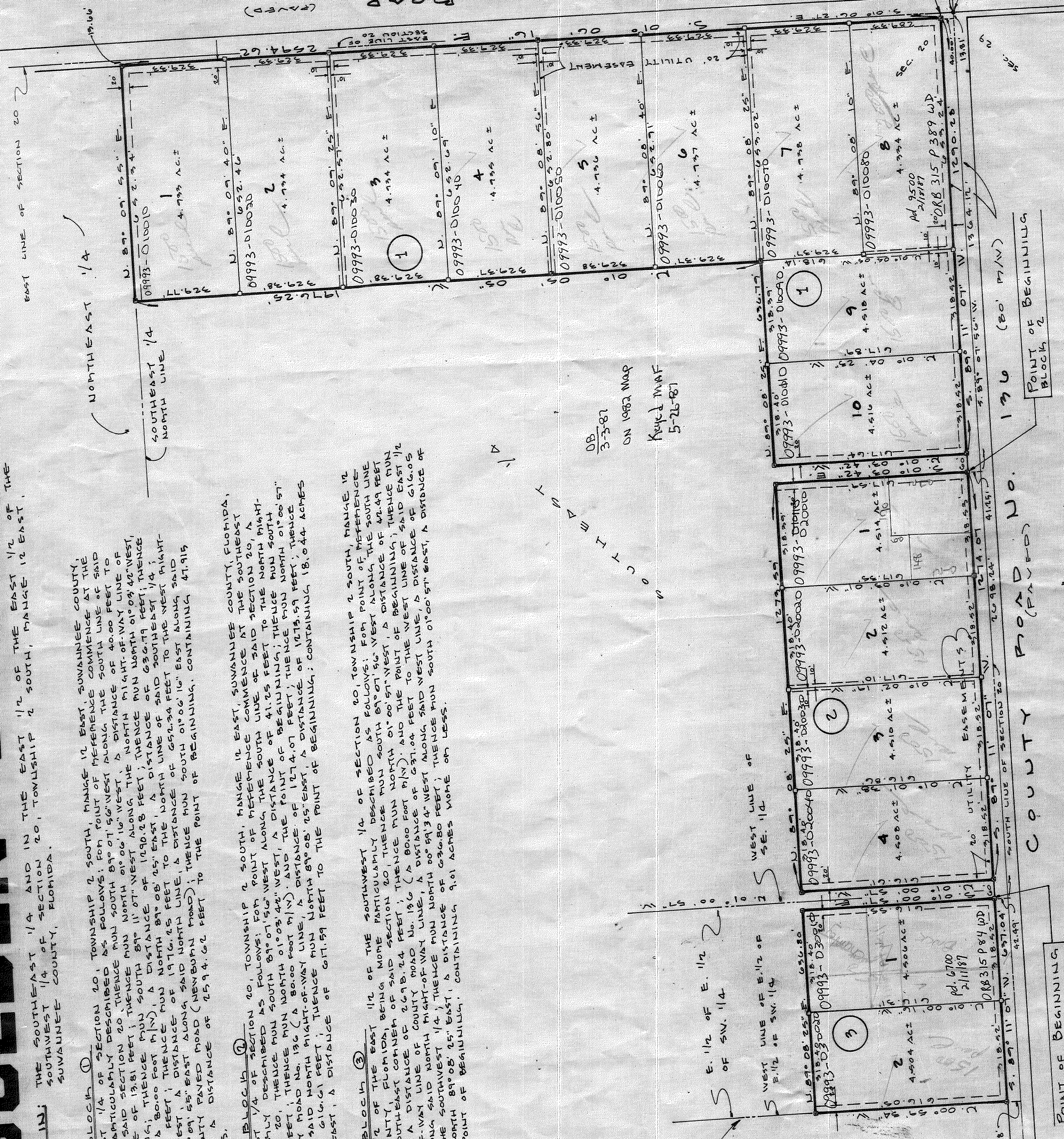
WITNESS MY HAND AND SEAL AT MIAMI CITY, STATE OF FLORIDA, THIS 20th DAY OF JANUARY, A.D. 1987.

APPROVED BY BOARD OF COUNTY COMMISSIONERS, SUWANNEE COUNTY, FLORIDA:
 SIGNED: *Charles Brown*, CHAIRMAN ATTEST: *J. Clemm*
 DATE: January 20, 1987

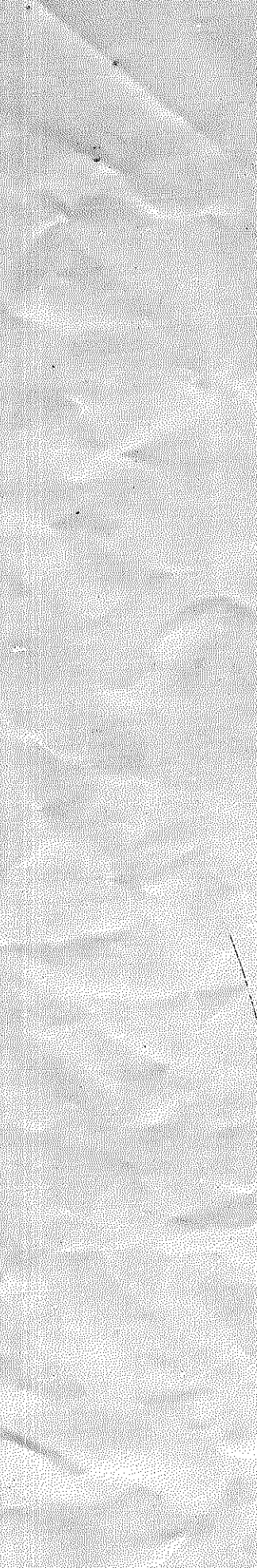
CERTIFICATE OF CLERK:
 I HEREBY CERTIFY THAT THE FOREGOING PLAT, HAVING BEEN DULY APPROVED BY THE BOARD OF COUNTY COMMISSIONERS OF SUWANNEE COUNTY, FLORIDA, WAS ACCEPTED AND FILED FOR RECORD THIS 20th DAY OF JANUARY, A.D. 1987 IN PLAT BOOK 1, PAGE 361 OF THE PUBLIC RECORDS OF SAID SUWANNEE COUNTY, FLORIDA.

SUBVEYOR'S CERTIFICATE:
 I HEREBY CERTIFY THAT THIS IS A TRUE AND CORRECT REPRESENTATION OF THE LANDS SURVEYED AND SHOWN HEREON THAT P. P. A. S. - PERMANENT EASEMENT POINTS AND P. C. P. S. - PERMANENT COUNTRY POINTS HAVE BEEN PLACED AS SHOWN AND THAT THE SURVEY DATA SHOWN COMPLIES WITH THE REQUIREMENTS OF CHAPTER 111, FLORIDA STATUTES.

DATE: January 20, 1987
 PROFESSIONAL LAND SURVEYOR
 F.L.A. CERT. NO. 2245
 DATE: January 5, 1987



LEGEND
 1) CONCRETE MONUMENT SET ON ALL CORNERS.
 2) CONCRETE MONUMENTS SET ON STATE PLANE CORNER SYSTEM.
 3) BEARING MONUMENTS ON STATE PLANE CORNER SYSTEM.
 4) BEARING MONUMENTS ON STATE PLANE CORNER SYSTEM.
 5) BEARING MONUMENTS ON STATE PLANE CORNER SYSTEM.
 6) BEARING MONUMENTS ON STATE PLANE CORNER SYSTEM.
 7) BEARING MONUMENTS ON STATE PLANE CORNER SYSTEM.
 8) BEARING MONUMENTS ON STATE PLANE CORNER SYSTEM.
 9) BEARING MONUMENTS ON STATE PLANE CORNER SYSTEM.
 10) BEARING MONUMENTS ON STATE PLANE CORNER SYSTEM.
 11) BEARING MONUMENTS ON STATE PLANE CORNER SYSTEM.
 12) BEARING MONUMENTS ON STATE PLANE CORNER SYSTEM.
 13) BEARING MONUMENTS ON STATE PLANE CORNER SYSTEM.
 14) BEARING MONUMENTS ON STATE PLANE CORNER SYSTEM.
 15) BEARING MONUMENTS ON STATE PLANE CORNER SYSTEM.
 16) BEARING MONUMENTS ON STATE PLANE CORNER SYSTEM.
 17) BEARING MONUMENTS ON STATE PLANE CORNER SYSTEM.
 18) BEARING MONUMENTS ON STATE PLANE CORNER SYSTEM.
 19) BEARING MONUMENTS ON STATE PLANE CORNER SYSTEM.
 20) BEARING MONUMENTS ON STATE PLANE CORNER SYSTEM.



GRAPHIC SCALE
 SCALE IN FEET: 1" = 200'

J. SHERMAN FRIER & ASSOCIATES
 LAND SURVEYORS
 P.O. BOX 280 LIVE OAK, FLORIDA 32060
 PHONE: 351-5161-4633