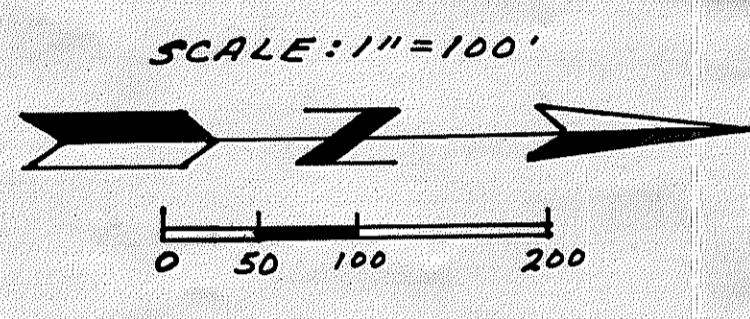
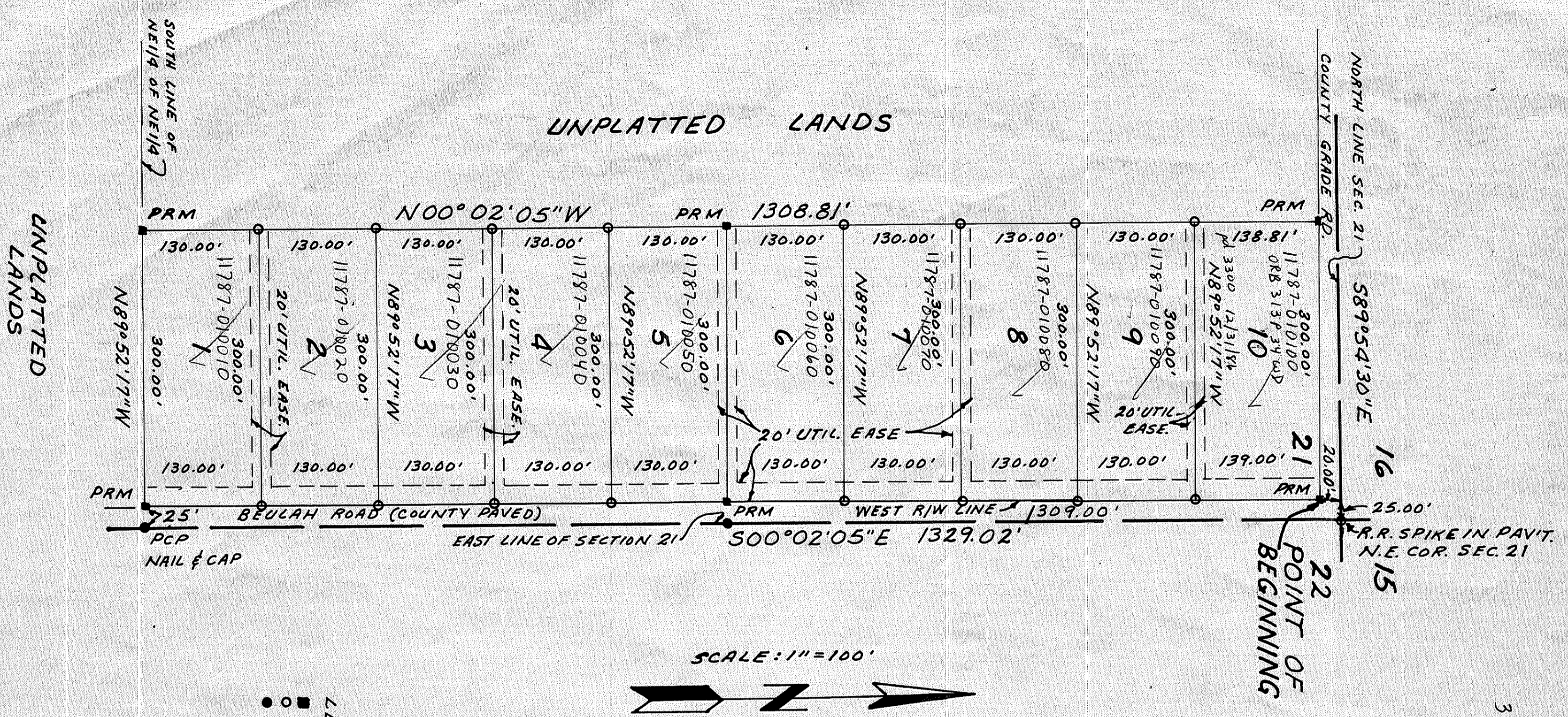


Foxridge Subdivision

**FOXBRIDGE SUBDIVISION**  
 A SUBDIVISION OF A PART OF NE1/4 OF SECTION 21, TOWNSHIP 3 SOUTH, RANGE 11 EAST, SUWANNEE COUNTY, FLORIDA

PLAT BOOK 1 PAGE 942



LEGEND:  
 ■ = CONCRETE MONUMENT (PRM)  
 ○ = IRON BARS  
 ● = NAIL & CAP (PCP)

21-035-11E-11787-010000 (Header)  
 3/9/87  
 18<sup>th</sup> Dec 77  
 For L.S.  
 5-26-87  
 MKR  
 5-28-87

On Computer Modified

**DESCRIPTION:**  
 COMMENCE AT THE NORTHEAST CORNER OF SECTION 21, TOWNSHIP 3 SOUTH, RANGE 11 EAST, SUWANNEE COUNTY, FLORIDA AND RUN THENCE N89°54'30\"/>

**DEDICATION:**

ROBERT W. POOLE CERTIFIES THAT HE IS THE OWNER OF THE ABOVE DESCRIBED PROPERTY AND DOES HEREBY DEDICATE TO THE PUBLIC FOREVER THE STREETS AND EASEMENTS AS SHOWN ON THIS PLAT OF "FOXBRIDGE SUBDIVISION".

**ACKNOWLEDGEMENT:**  
 STATE OF FLORIDA  
 COUNTY OF SUWANNEE

BEFORE ME PERSONALLY APPEARED ROBERT W. POOLE WHO TO ME IS WELL KNOWN AND KNOWN TO ME TO BE THE INDIVIDUAL DESCRIBED IN AND WHO EXECUTED THE FOREGOING DEDICATION AND WHO ACKNOWLEDGED TO AND BEFORE ME THAT HE EXECUTED SAID DEDICATION FOR THE USES AND PURPOSES THEREIN EXPRESSED.

NOTARY PUBLIC  
 MY COMMISSION EXPIRES \_\_\_\_\_

**SURVEYOR'S CERTIFICATE:**

I DO HEREBY CERTIFY THAT THIS PART OF "FOXBRIDGE SUBDIVISION" IS A TRUE AND CORRECT REPRESENTATION OF HEREON DESCRIBED LANDS ACCORDING TO A SURVEY MADE UNDER MY RESPONSIBLE DIRECTION AND SUPERVISION AND THAT PERMANENT REFERENCE MONUMENTS (P.R.M.'S) AND PERMANENT CONTROL POINTS (P.C.P.'S) HAVE BEEN SET AS CALLED FOR UNDER CHAPTER 177, SECTION 1, 091 (748) LAWS OF FLORIDA, AND THE SURVEY DATA COMPLETES WITH ALL THE REQUIREMENTS OF CHAPTER 177 F.S. 1975.

**COUNTY ATTORNEY'S APPROVAL:**  
 DATE: 24 Oct. 1985  
 APPROVED BY COUNTY ATTORNEY SUWANNEE COUNTY, FLORIDA

**COUNTY COMMISSIONERS APPROVAL:**  
 APPROVED BY BOARD OF COUNTY COMMISSIONERS SUWANNEE COUNTY, FLORIDA

**CLERK'S CERTIFICATE OF APPROVAL:**  
 THIS PLAT HAS BEEN FILED FOR RECORD AND RECORDED IN THE PUBLIC RECORDS OF SUWANNEE COUNTY, FLORIDA, THIS \_\_\_\_\_ DAY OF \_\_\_\_\_ 1985 A.D.

CLERK: \_\_\_\_\_ DEPUTY CLERK: \_\_\_\_\_