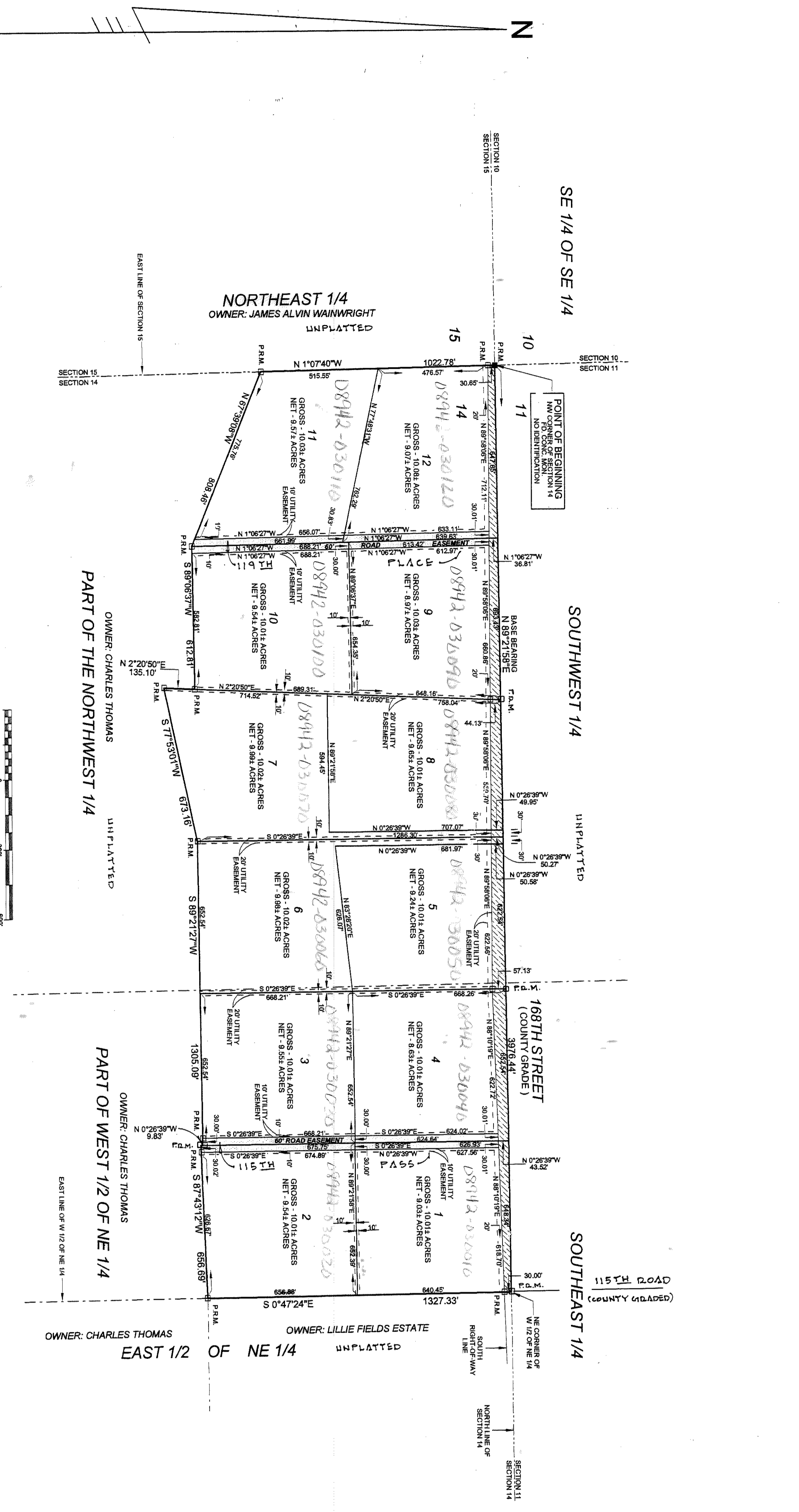


Fields of McAlpin Phase 3

FIELDS OF MCALPIN, PHASE THREE

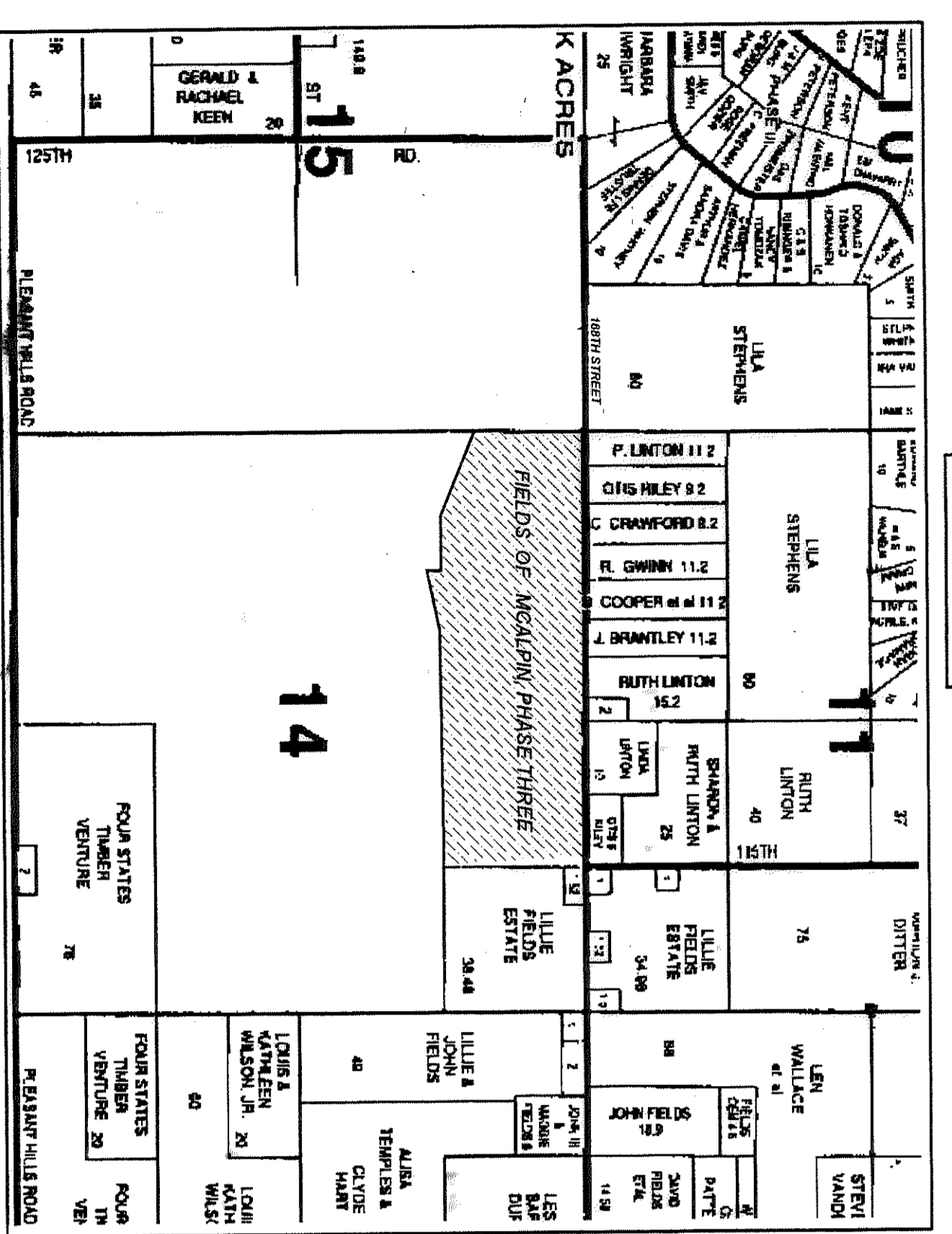
PART OF THE WEST 1/2 OF THE NORTHEAST 1/4 OF SECTION 14, TOWNSHIP 4 SOUTH, RANGE 13 EAST, SUWANNEE COUNTY, FLORIDA, BEING MORE PARTICULARLY DESCRIBED AS FOLLOWS: FOR POINT OF BEGINNING COMMENCE AT THE NORTHWEST CORNER OF SAID SECTION 14, THE EAST CORNER OF SAID SECTION 14 OF SAID SECTION 14, 0°52'24" EAST, A DISTANCE OF 666.69 FEET, THENCE RUN NORTH 0°28'39" WEST, A DISTANCE OF 9.83 FEET, THENCE RUN SOUTH 87°43'12" WEST, A DISTANCE OF 666.69 FEET, THENCE RUN NORTH 0°28'39" WEST, A DISTANCE OF 9.83 FEET, THENCE RUN SOUTH 89°21'27" WEST, A DISTANCE OF 1306.09 FEET, THENCE RUN SOUTH 77°53'01" WEST, A DISTANCE OF 673.16 FEET, THENCE RUN NORTH 02°20'50" EAST, A DISTANCE OF 135.10 FEET, THENCE RUN SOUTH 89°06'33" WEST, A DISTANCE OF 612.81 FEET, THENCE RUN NORTH 07°40' WEST, A DISTANCE OF 908.48 FEET TO THE WEST LINE OF SAID SECTION 14, THENCE RUN NORTH 07°40' WEST ALONG SAID WEST LINE, A DISTANCE OF 1022.78 FEET TO THE POINT OF BEGINNING, 120.24 ACRES, MORE OR LESS.

SUBJECT TO EXISTING COUNTY ROAD RIGHT-OF-WAY.



VICINITY MAP NOT TO SCALE

GRAPHIC SCALE SCALE IN FEET 1"=300 FEET



BUILDING SET BACKS:
 FRONT: 30 FEET
 REAR: 15 FEET
 SIDE: 15 FEET

ZONING:
 A-1 (RESIDENTIAL), ONE DWELLING UNIT PER A-1 (CONVENTIONAL), FIVE ACRES

BUILDING PERMIT NOTE:
 A BUILDING PERMIT FOR THE CONSTRUCTION OR LOCATION OF ANY RESIDENTIAL BUILDING OR STRUCTURE SHALL NOT BE ISSUED UNLESS THE APPLICANT HAS OBTAINED A FLOOD ZONE MAP FROM THE SUWANNEE COUNTY ENGINEER, ENGINEERED BY LAW.

SPECIAL EASEMENT NOTE:
 SPECIAL EASEMENTS WILL NOT BE MAINTAINED BY SUWANNEE COUNTY.

SPECIAL NOTE:
 THERE ARE LOTS IN THE SUBDIVISION WHICH ARE IN CLOSE PROXIMITY TO VARIOUS AGRICULTURAL OPERATIONS. BE AWARE THAT SUCH AGRICULTURAL OPERATIONS MAY CAUSE ODDORS, FLEAS POSSIBLE POLLUTANTS AND NOISES THAT MAY BE OFFENSIVE.

ASSURANCES:
 1. THE PLAT IS A TRUE AND CORRECT COPY OF THE ORIGINAL AS SUBMITTED TO THE SUWANNEE COUNTY ENGINEER.
 2. THE PLAT IS A TRUE AND CORRECT COPY OF THE ORIGINAL AS SUBMITTED TO THE SUWANNEE COUNTY ENGINEER.
 3. THE PLAT IS A TRUE AND CORRECT COPY OF THE ORIGINAL AS SUBMITTED TO THE SUWANNEE COUNTY ENGINEER.
 4. THE PLAT IS A TRUE AND CORRECT COPY OF THE ORIGINAL AS SUBMITTED TO THE SUWANNEE COUNTY ENGINEER.
 5. THE PLAT IS A TRUE AND CORRECT COPY OF THE ORIGINAL AS SUBMITTED TO THE SUWANNEE COUNTY ENGINEER.
 6. THE PLAT IS A TRUE AND CORRECT COPY OF THE ORIGINAL AS SUBMITTED TO THE SUWANNEE COUNTY ENGINEER.
 7. THE PLAT IS A TRUE AND CORRECT COPY OF THE ORIGINAL AS SUBMITTED TO THE SUWANNEE COUNTY ENGINEER.
 8. THE PLAT IS A TRUE AND CORRECT COPY OF THE ORIGINAL AS SUBMITTED TO THE SUWANNEE COUNTY ENGINEER.
 9. THE PLAT IS A TRUE AND CORRECT COPY OF THE ORIGINAL AS SUBMITTED TO THE SUWANNEE COUNTY ENGINEER.
 10. THE PLAT IS A TRUE AND CORRECT COPY OF THE ORIGINAL AS SUBMITTED TO THE SUWANNEE COUNTY ENGINEER.
 11. THE PLAT IS A TRUE AND CORRECT COPY OF THE ORIGINAL AS SUBMITTED TO THE SUWANNEE COUNTY ENGINEER.
 12. THE PLAT IS A TRUE AND CORRECT COPY OF THE ORIGINAL AS SUBMITTED TO THE SUWANNEE COUNTY ENGINEER.
 13. THE PLAT IS A TRUE AND CORRECT COPY OF THE ORIGINAL AS SUBMITTED TO THE SUWANNEE COUNTY ENGINEER.
 14. THE PLAT IS A TRUE AND CORRECT COPY OF THE ORIGINAL AS SUBMITTED TO THE SUWANNEE COUNTY ENGINEER.
 15. THE PLAT IS A TRUE AND CORRECT COPY OF THE ORIGINAL AS SUBMITTED TO THE SUWANNEE COUNTY ENGINEER.
 16. THE PLAT IS A TRUE AND CORRECT COPY OF THE ORIGINAL AS SUBMITTED TO THE SUWANNEE COUNTY ENGINEER.
 17. THE PLAT IS A TRUE AND CORRECT COPY OF THE ORIGINAL AS SUBMITTED TO THE SUWANNEE COUNTY ENGINEER.
 18. THE PLAT IS A TRUE AND CORRECT COPY OF THE ORIGINAL AS SUBMITTED TO THE SUWANNEE COUNTY ENGINEER.
 19. THE PLAT IS A TRUE AND CORRECT COPY OF THE ORIGINAL AS SUBMITTED TO THE SUWANNEE COUNTY ENGINEER.
 20. THE PLAT IS A TRUE AND CORRECT COPY OF THE ORIGINAL AS SUBMITTED TO THE SUWANNEE COUNTY ENGINEER.

UTILITY EASEMENT DETAIL:

NOTICE:
 DENOTES 20' EASEMENT AS SHOWN. EASEMENTS SHOWN HEREON FOR MAINTENANCE AND OPERATION OF CABLE, TELEVISION SERVICES AND INSTALLATION.

FLOOD ZONE INFORMATION:
 THE PROPERTY AS SHOWN IS IN FLOOD ZONE 'X'. AS PER THE FLOOD INSURANCE RATE MAP OF THE FEDERAL EMERGENCY MANAGEMENT AGENCY PANEL NO. 13000-0200A.

THIS PLAT HAS BEEN REVIEWED FOR CONFORMITY TO CHAPTER 171 BY: *Shirley Moore*
 REGISTERED SURVEYOR AND MAPPER
 FLORIDA CERTIFICATE NO. 2000

NOT VALID WITHOUT THE SIGNATURE AND THE ORIGINAL RAISED SEAL OF A FLORIDA LICENSED SURVEYOR.
 J. SHERMAN PRIER & ASSOCIATES, INC.
 LAND SURVEYORS
 130 WEST HOWARD STREET, P.O. BOX 560, LEE OAK, FLORIDA 32064
 PHONE: 386-392-4639 FAX: 386-392-5270

PLAT BOOK 1 PAGE 477

ADOPTION AND DEDICATION:
 KNOWN ALL MEN BY THESE PRESENTS THAT FIELDS OF MCALPIN, L.L.O. AS OWNER, TO BE KNOWN AS FIELDS OF MCALPIN, PHASE THREE, AND THAT THE ROADS, STREETS AND EASEMENTS FOR UTILITIES, ORNAMENTAL AND OTHER PURPOSES HEREBY SHOWN ARE HEREBY ADOPTED AND DEDICATED TO THE PUBLIC USE OF THE PEOPLE OF SUWANNEE COUNTY, FLORIDA.
 WITNESSES MY HAND AND SEAL AT LEE OAK, STATE OF FLORIDA, THIS 27 DAY OF January, A.D. 2004.
 NOTARY PUBLIC, STATE OF FLORIDA
 MY COMMISSION EXPIRES: June 20, 2007

DEDICATION OF MORTGAGEE:
 THIS IS TO CERTIFY THAT FIRST FEDERAL SAVINGS BANK OF FLORIDA, A CORPORATION UNDER THE LAWS OF THE STATE OF FLORIDA, HAS RECEIVED FROM THE SUWANNEE COUNTY ENGINEER, ENGINEERED BY LAW, A TRUE AND CORRECT COPY OF THE ORIGINAL AS SUBMITTED TO THE SUWANNEE COUNTY ENGINEER, ENGINEERED BY LAW, OF THE FIELDS OF MCALPIN, PHASE THREE, AND THAT THE ROADS, STREETS AND EASEMENTS FOR UTILITIES, ORNAMENTAL AND OTHER PURPOSES HEREBY SHOWN ARE HEREBY ADOPTED AND DEDICATED TO THE PUBLIC USE OF THE PEOPLE OF SUWANNEE COUNTY, FLORIDA.
 WITNESSES MY HAND AND SEAL AT LEE OAK, STATE OF FLORIDA, THIS 27 DAY OF January, A.D. 2004.
 NOTARY PUBLIC, STATE OF FLORIDA
 MY COMMISSION EXPIRES: June 20, 2007

STATE OF FLORIDA, COUNTY OF SUWANNEE
 I HEREBY CERTIFY ON THIS 27 DAY OF January, A.D. 2004, BEFORE ME PERSONALLY APPEARED AN OFFICER duly authorized to administer oaths and have acknowledged KENNETH C. LEBRETT, OF SUWANNEE COUNTY, FLORIDA, AS THE OWNER OF SAID COMPARISON WITH THE SEAL OF SAID SAID CORPORATION AFFIRED HERETO.
 WITNESSES MY HAND AND SEAL AT LEE OAK, STATE OF FLORIDA, THIS 27 DAY OF January, A.D. 2004.
 KENNETH C. LEBRETT, FIDELITY

APPROVED BY BOARD OF COUNTY COMMISSIONERS, SUWANNEE COUNTY, FLORIDA
 I HEREBY CERTIFY THAT THE FOREGOING PLAT HAVING BEEN DULY APPROVED BY THE BOARD OF COUNTY COMMISSIONERS OF SUWANNEE COUNTY, FLORIDA, AND THAT THE SAME IS A TRUE AND CORRECT COPY OF THE ORIGINAL AS SUBMITTED TO THE SUWANNEE COUNTY ENGINEER, ENGINEERED BY LAW, OF THE FIELDS OF MCALPIN, PHASE THREE, AND THAT THE ROADS, STREETS AND EASEMENTS FOR UTILITIES, ORNAMENTAL AND OTHER PURPOSES HEREBY SHOWN ARE HEREBY ADOPTED AND DEDICATED TO THE PUBLIC USE OF THE PEOPLE OF SUWANNEE COUNTY, FLORIDA.
 WITNESSES MY HAND AND SEAL AT LEE OAK, STATE OF FLORIDA, THIS 27 DAY OF January, A.D. 2004.
 NOTARY PUBLIC, STATE OF FLORIDA
 MY COMMISSION EXPIRES: June 20, 2007

CERTIFICATE OF CLERK:
 I HEREBY CERTIFY THAT THE FOREGOING PLAT HAVING BEEN DULY APPROVED BY THE BOARD OF COUNTY COMMISSIONERS OF SUWANNEE COUNTY, FLORIDA, AND THAT THE SAME IS A TRUE AND CORRECT COPY OF THE ORIGINAL AS SUBMITTED TO THE SUWANNEE COUNTY ENGINEER, ENGINEERED BY LAW, OF THE FIELDS OF MCALPIN, PHASE THREE, AND THAT THE ROADS, STREETS AND EASEMENTS FOR UTILITIES, ORNAMENTAL AND OTHER PURPOSES HEREBY SHOWN ARE HEREBY ADOPTED AND DEDICATED TO THE PUBLIC USE OF THE PEOPLE OF SUWANNEE COUNTY, FLORIDA.
 WITNESSES MY HAND AND SEAL AT LEE OAK, STATE OF FLORIDA, THIS 27 DAY OF January, A.D. 2004.
 CLERK OF COUNTY, SUWANNEE COUNTY, FLORIDA

LEGEND AND NOTES:
 DENOTES LINES DEDICATED AS ROAD RIGHT-OF-WAY BY THIS PLAT.
 DENOTES P.S.M. (PERMANENT REFERENCE MONUMENT) SET.
 1) SEE X-20' REBAR WITH CAP, STAMPED L.S. & J.T.S. SET ON ALL CORNERS AND INTERSECTIONS OF LINES AND ALONG THE EAST LINE OF SECTION 14.
 2) BEARINGS BASED ON THE NORTH LINE OF SECTION 14 (N 89°21'27" E).
 3) FOR SECTION BREAKDOWN, SEE JOB FILE THIS OFFICE.

THIS DIVISION OFFICE IS THE SUWANNEE COUNTY ENGINEER'S OFFICE AND IS LOCATED AT 130 WEST HOWARD STREET, SUWANNEE COUNTY, FLORIDA 32064. THE SUWANNEE COUNTY ENGINEER'S OFFICE IS OPEN FROM 8:00 AM TO 5:00 PM, MONDAY THROUGH FRIDAY. THE SUWANNEE COUNTY ENGINEER'S OFFICE IS CLOSED ON SATURDAY, SUNDAY, AND HOLIDAYS.
 REGISTERED LAND SURVEYOR
 DATE: JANUARY 20, 2004
 JOB NO. 277-20040193

NOT VALID WITHOUT THE SIGNATURE AND THE ORIGINAL RAISED SEAL OF A FLORIDA LICENSED SURVEYOR.
 J. SHERMAN PRIER & ASSOCIATES, INC.
 LAND SURVEYORS
 130 WEST HOWARD STREET, P.O. BOX 560, LEE OAK, FLORIDA 32064
 PHONE: 386-392-4639 FAX: 386-392-5270

Header
 14-413-
 08942-030000