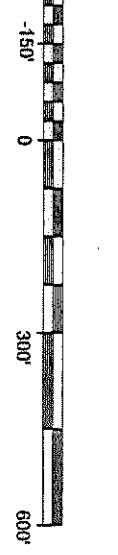
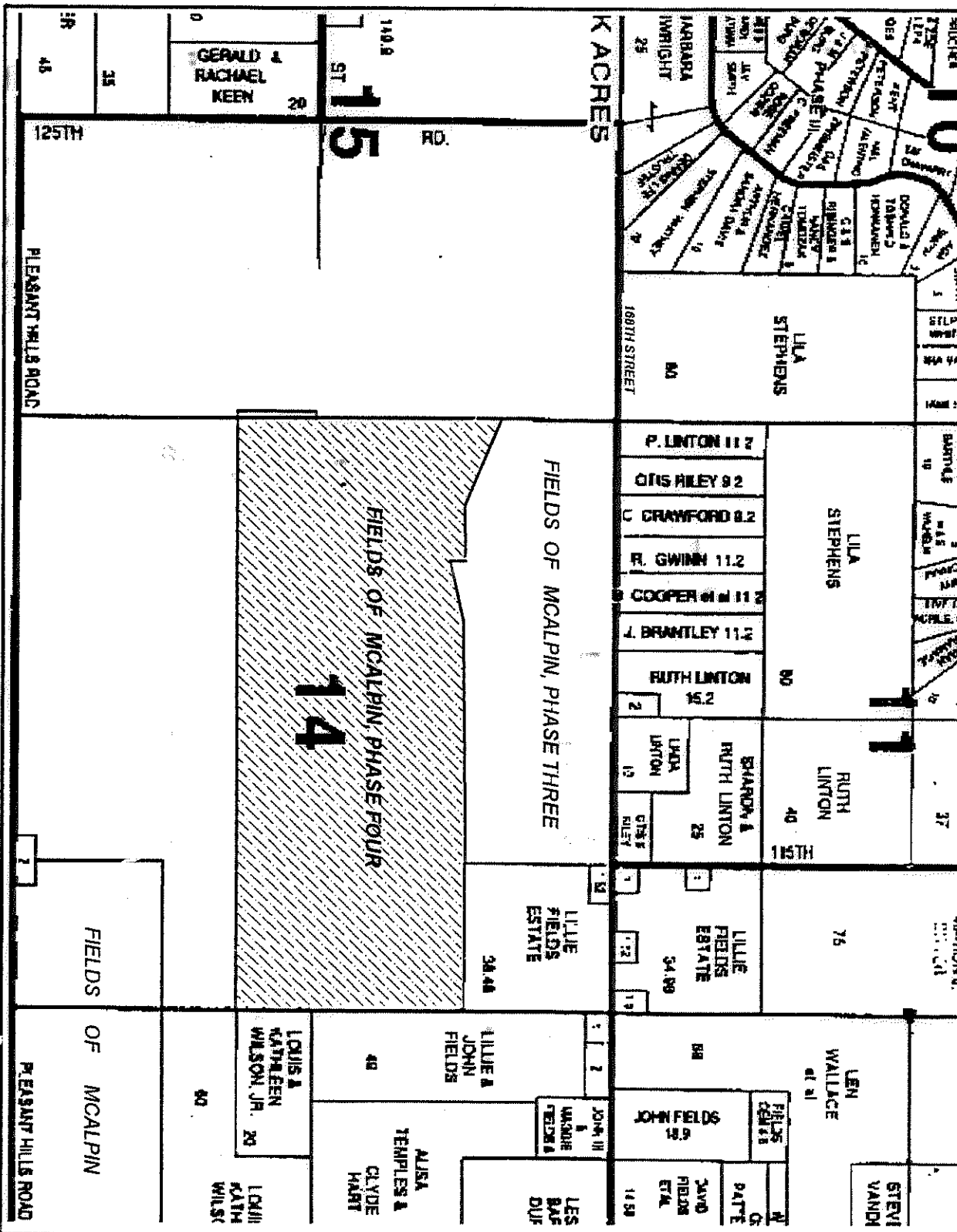
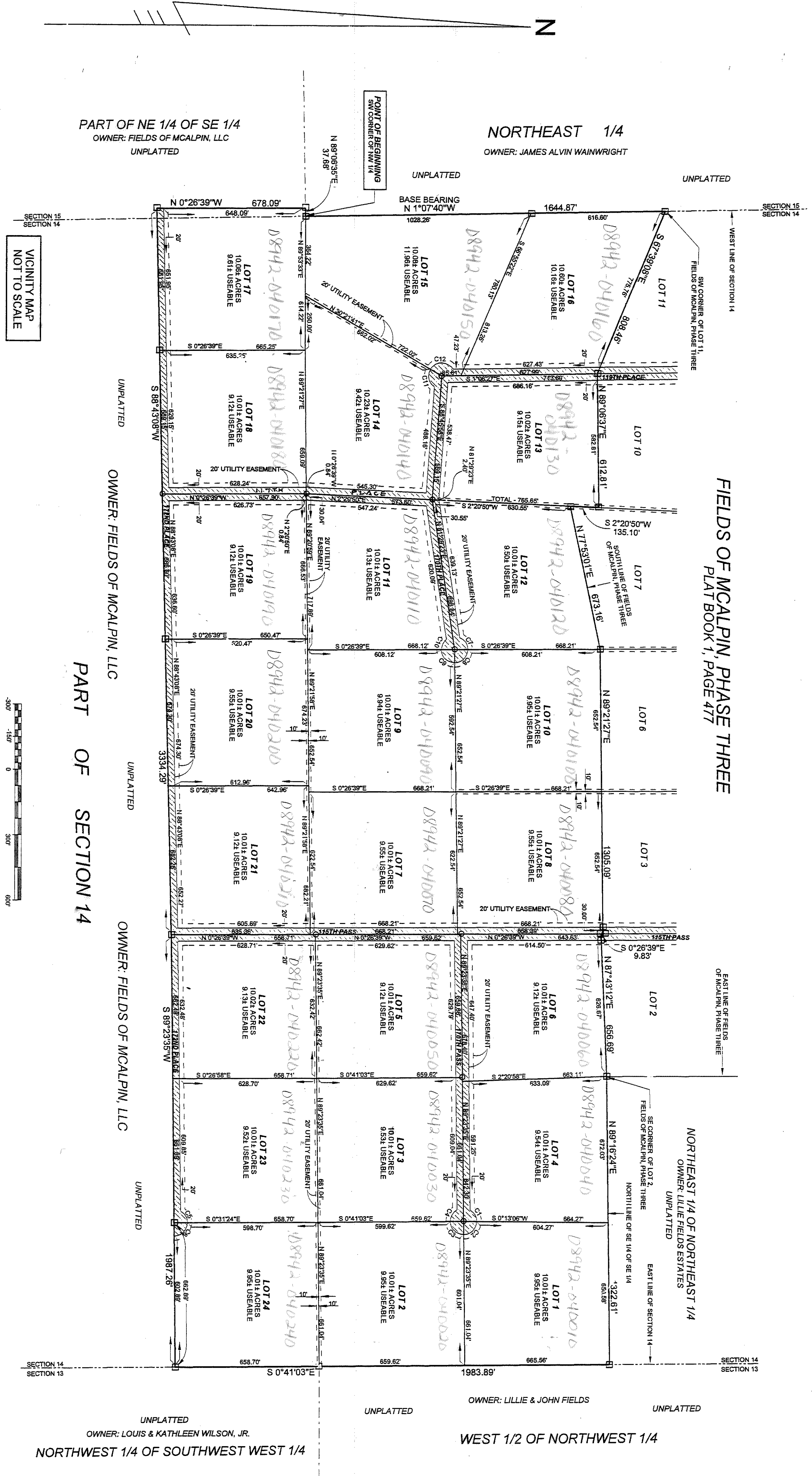
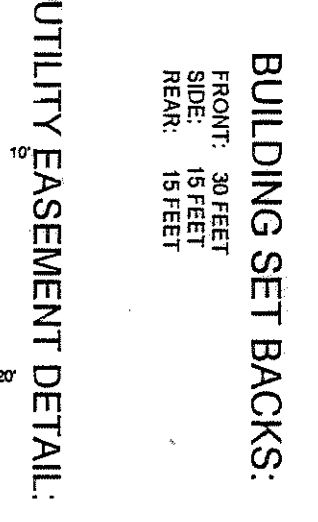


FIELDS OF MCALPIN, PHASE FOUR

PART OF SECTION 14 AND PART OF THE NORTHEAST 1/4 OF SECTION 15, TOWNSHIP 2 SOUTH, RANGE 13 EAST, SUWANNEE COUNTY, FLORIDA, BEING MORE PARTICULARLY DESCRIBED AS FOLLOWS...



CURVE DATA table with columns for Curve No., Chain, Radius, Arc, Tangent, Chord, and Stationing.



DEPOTES OR EASEMENTS AS SHOWN HEREON FOR UTILITIES SHALL ALSO BE EASEMENTS FOR THE CONSTRUCTION AND INSTALLATION OF TELEVISION ANTENNAE AND OPERATION OF CABLE TELEVISION SERVICE.

NOTICE: This plat, as recorded in the graphic form, is the official depiction of the subdivided lands described herein and will not be recorded on this plat unless accompanied by the original or a certified copy of the plat.

ADOPTION AND DEDICATION: KNOW ALL MEN BY THESE PRESENTS THAT THE FIELDS OF MCALPIN, PHASE FOUR, BEING MORE PARTICULARLY DESCRIBED AS FOLLOWS...

DEDICATION OF MORTGAGE: THIS IS TO CERTIFY THAT FIRST FEDERAL SAVINGS BANK OF FLORIDA, A CORPORATION UNDER THE LAWS OF THE STATE OF FLORIDA, HAS HEREBY DEDICATED TO THE PUBLIC THE FIELDS OF MCALPIN, PHASE FOUR...

CERTIFICATE OF CLERK: I HEREBY CERTIFY ON THIS 20th DAY OF February, 2004, BEFORE ME PERSONALLY APPEARED the following persons, who being duly sworn, depose and say that they are the owners of the property described in the foregoing plat...

APPROVED BY BOARD OF COUNTY COMMISSIONERS, SUWANNEE COUNTY, FLORIDA. Includes signatures of board members.

LEGEND AND NOTES: DENOTES LANDS DESIGNATED AS ROAD RIGHT OF WAY BY THIS PLAT. DENOTES PLAT (PERMANENT REFERENCE) NO. [] OF [].

NOTICE: This plat, as recorded in the graphic form, is the official depiction of the subdivided lands described herein and will not be recorded on this plat unless accompanied by the original or a certified copy of the plat.

Header 14-413 08942-040000