

Douling Oaks Unit Two

DOUHLING OAKS UNIT TWO

SITUATED IN THE NORTHEAST 1/4 OF THE NORTHWEST 1/4, AND THE WEST 1/2 OF THE NORTHWEST 1/4 OF SECTION 21, TOWNSHIP 3-SOUTH, RANGE 11 EAST, SUWANNEE COUNTY, FLORIDA.

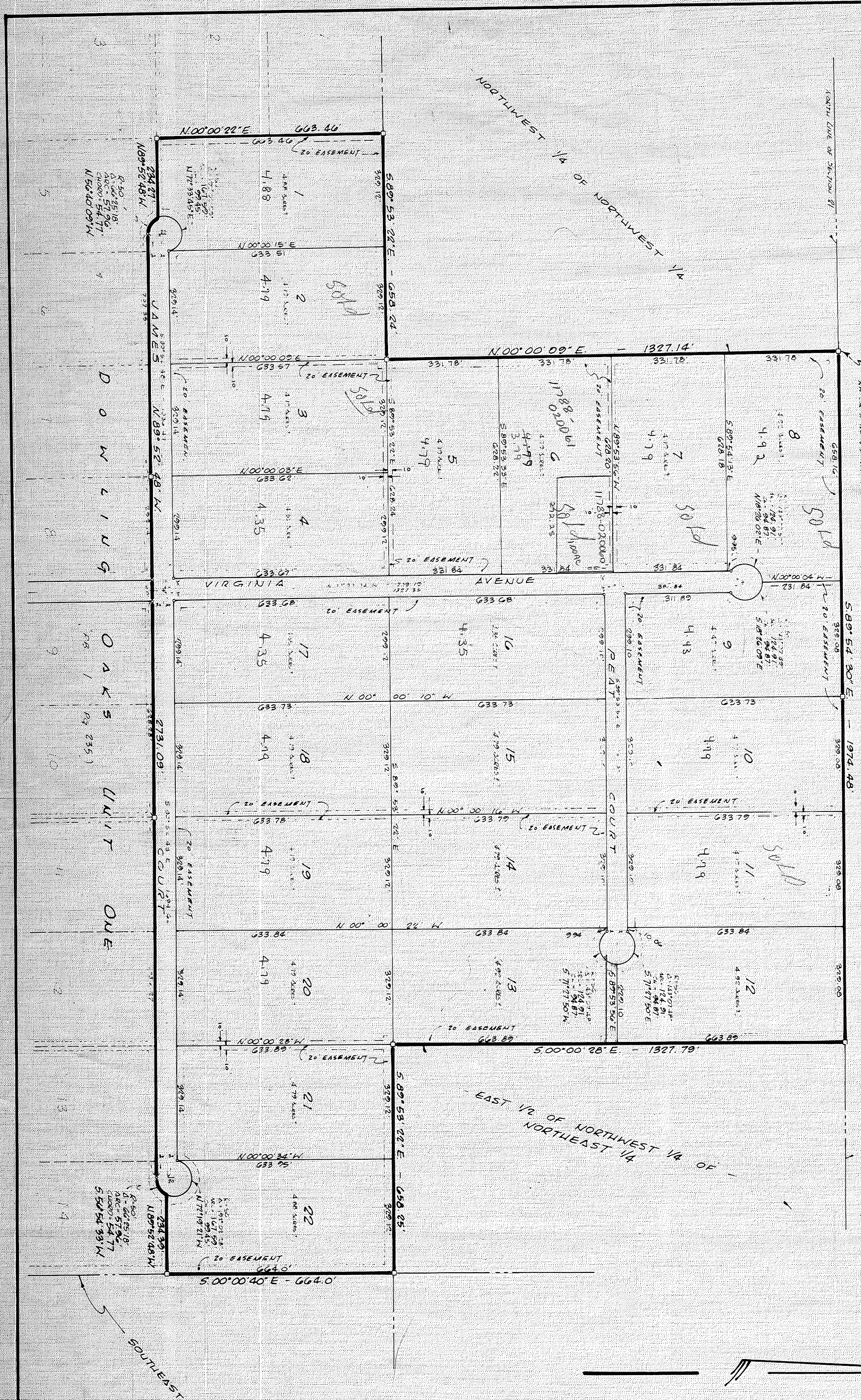
DESCRIPTION:
 BEING THE NORTHEAST 1/4 OF THE NORTHWEST 1/4 AND THE WEST 1/2 OF THE NORTHWEST 1/4 OF SECTION 21, TOWNSHIP 3 SOUTH, RANGE 11 EAST, SUWANNEE COUNTY, FLORIDA, BEING MORE PARTICULARLY DESCRIBED AS FOLLOWS:
 FOR A PART OF BEARING AND DISTANCE OF THE NORTH LINE OF SECTION 21, A DISTANCE OF 194.48 FEET; THENCE RUN SOUTH 00°00'18" EAST, 20.00 FEET; THENCE RUN SOUTH 89°53'22" EAST, A DISTANCE OF 638.25 FEET; THENCE RUN SOUTH 00°00'18" EAST, A DISTANCE OF 644.00 FEET TO THE NORTHEAST CORNER OF LOT 14, DOUHLING OAKS UNIT TWO AS RECORDED IN PLAT BOOK 1, PAGE 235 OF THE PUBLIC RECORDS OF SUWANNEE COUNTY, FLORIDA; THENCE RUN NORTH 89°52'48" WEST, ALONG THE NORTH LINE OF SAID DOUHLING OAKS UNIT ONE, A DISTANCE OF 234.39 FEET TO A CURVE CONVEXED NORTHEASTERLY, HAVING A RADIUS OF 50.00 FEET; THENCE ALONG SAID CURVE AN ARC DISTANCE OF 57.96 FEET; SAID CURVE BEING SUBTENDED BY A CHORD BEARING AND DISTANCE OF SOUTH 56°54'53" WEST, 54.77 FEET; THENCE RUN NORTH 89°52'48" WEST, A DISTANCE OF 2731.09 FEET TO THE POINT OF CURVE OR A CURVE CONVEXED NORTHEASTERLY HAVING A RADIUS OF 5000 FEET; THENCE ALONG SAID CURVE AN ARC DISTANCE OF 57.96 FEET; SAID CURVE BEING SUBTENDED BY A CHORD BEARING AND DISTANCE OF SOUTH 56°54'53" WEST, 54.77 FEET; THENCE RUN NORTH 89°52'48" WEST, A DISTANCE OF 234.27 FEET; THENCE RUN NORTH 00°00'22" EAST, A DISTANCE OF 605.46 FEET; THENCE RUN SOUTH 89°53'22" EAST, A DISTANCE OF 658.84 FEET; THENCE RUN NORTH 00°00'09" EAST, A DISTANCE OF 137.14 FEET TO THE POINT OF BEGINNING, CONTAINING 112.25 ACRES MORE OR LESS.

Maped
 in 1982
 G.C.B.

S
 E
 C
 T
 I
 O
 N
 2
 1

1900.00 per AC
 1900.00 per AC
 1900.00 per AC

On Annual Map
 1980



ADOPTION AND DEDICATION:
 KNOW ALL MEN BY THESE PRESENTS THAT DANIEL GRADYS, AN INDIVIDUAL, AS OWNED AND CAUSED THE LANDS HEREIN DESCRIBED TO BE SURVEYED, SUBDIVIDED AND PLATTED, TO BE KNOWN AS DOUHLING OAKS UNIT TWO AND THAT ALL STREETS, EASEMENTS AND EASEMENTS AS SHOWN ARE HEREBY DEDICATED TO THE PERPETUAL USE OF THE PUBLIC FOR PROPER USES AND PURPOSES HEREON STATED.

WITNESS: I, Walter H. Williams
 DANIEL GRADYS (OWNER)
David C. Foy

STATE OF FLORIDA, COUNTY OF SUWANNEE:
 I, HEREBY CERTIFY THAT ON THIS 11th DAY OF September, A.D. 1980 BEFORE ME PERSONALLY APPEARED DANIEL GRADYS, AS OWNER, TO ME KNOWN TO BE THE INDIVIDUAL DESCRIBED IN AND WHO EXECUTED THE FOREGOING DEDICATION, AND HE ACKNOWLEDGED EXECUTION THEREOF.
 WITNESS MY HAND AND SEAL AT WALTON, STATE OF FLORIDA,
 THIS 11th DAY OF September, 1980.

NOTARY PUBLIC, STATE OF FLORIDA
 MY COMMISSION EXPIRES September 23, 1983

APPROVED BY BOARD OF COUNTY COMMISSIONERS
 SUWANNEE COUNTY, FLORIDA
 SIGNED: Walter H. Williams, CHAIRMAN
 ATTEST: [Signature], CLERK
 DATE: 9/11/80

CERTIFICATE OF CLERK:
 I HEREBY CERTIFY THAT THE FOREGOING PLAT HAVING BEEN DULY APPROVED BY THE BOARD OF COUNTY COMMISSIONERS OF SUWANNEE COUNTY, FLORIDA WAS ACCEPTED AND FILED FOR RECORD THIS DAY OF September, A.D. 1980 IN PLAT BOOK I PAGE 245 OF THE PUBLIC RECORDS OF SUWANNEE COUNTY, FLORIDA.

[Signature]
 CLERK OF COUNTY COURT
 SUWANNEE COUNTY, FLORIDA

SURVEYORS CERTIFICATE:
 I HEREBY CERTIFY THAT THIS PLAT IS A TRUE AND CORRECT REPRESENTATION OF THE LANDS SURVEYED AND SHOWN HEREON, THAT THE SURVEY WAS MADE UNDER MY RESPONSIBLE DIRECTION AND SUPERVISION, THAT PERMANENT REFERENCE MONUMENTS AND PERMANENT CONTROL POINTS HAVE BEEN PLACED AS SHOWN, AND THAT THE SURVEY DATA SHOWS COMPLIES WITH THE REQUIREMENTS OF CHAPTER 177, FLORIDA STATUTES.

On Computer
 Mapping 11-1-96
 TR

LEGEND:
 1) 0 DENOTES PERMANENT REFERENCE MONUMENT FROM
 2) 0 DENOTES PERMANENT CONTROL POINT, PCP
 3) EASEMENTS SHOWN HEREON ARE FOR UTILITIES

SURVEYORS NOTE:
 BEARING DATA SHOWN HEREON PROJECTED FROM
 DOUHLING OAKS UNIT ONE, PG. 235

[Signature]
 SURVEYOR
 DATE: Sept. 8, 1980