

COUNTRY VILLAGE

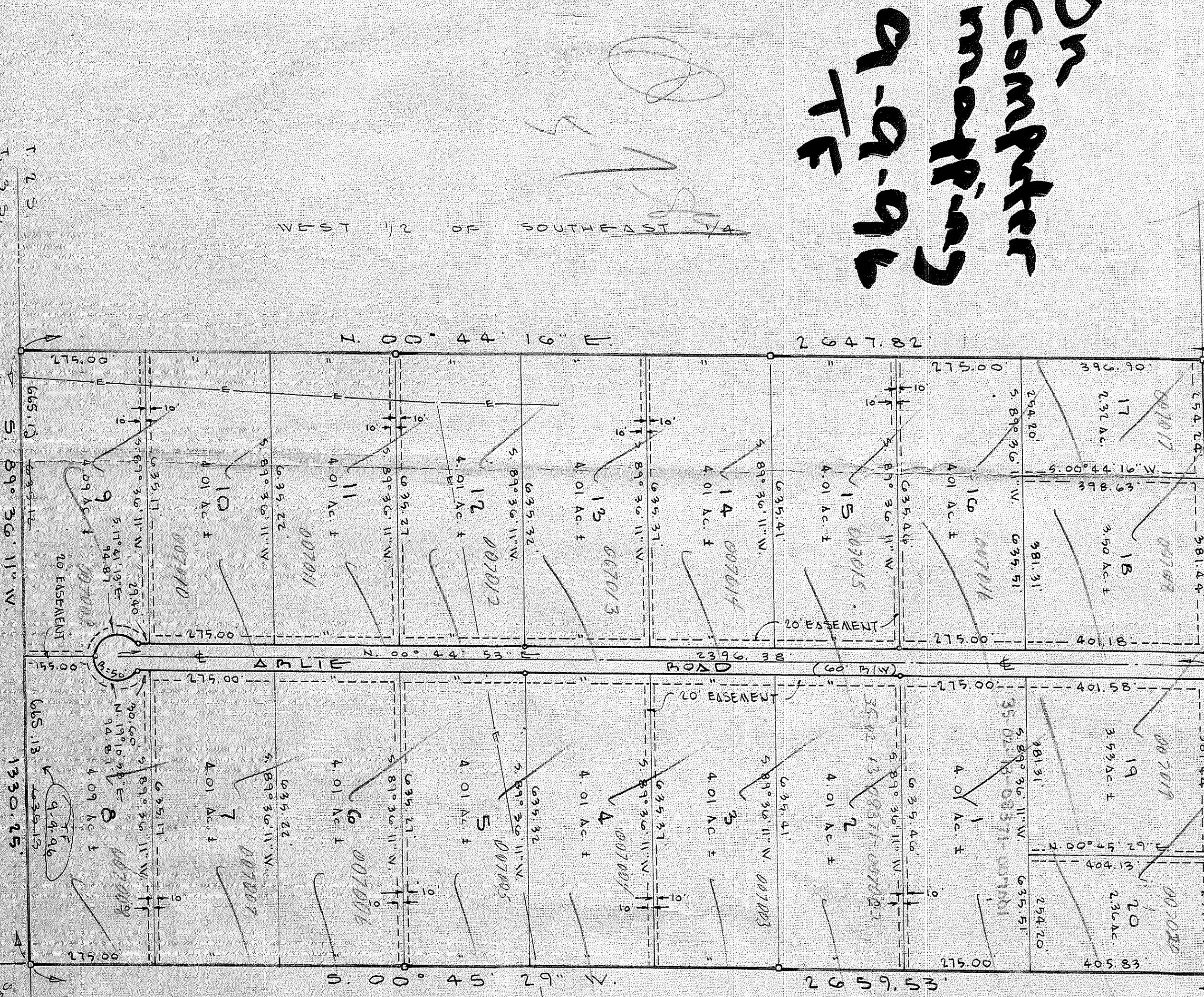
SITUATED IN SECTION 35 TOWNSHIP 2 SOUTH, RANGE 13 EAST, SUWANNEE COUNTY, FLORIDA.

DESCRIPTION:
THE EAST 1/2 OF THE SOUTHEAST 1/4 OF SECTION 35, TOWNSHIP 2 SOUTH, RANGE 13 EAST, SUWANNEE COUNTY, FLORIDA.

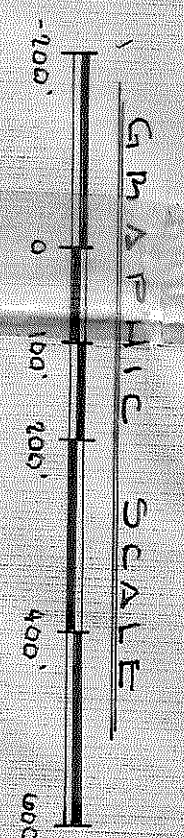
KEYED
6-29-85
MAY 12 1982
1/20/82 - 980
35-2-13 - 08371 - 00704-00702
Unsold lots @ \$125,000
Selling lots @ \$5000 per lot
17 & 20 Section 90%

SE 1/4 OF NE 1/4
NE 1/4 OF SE 1/4
K.T.C. U-15-85

EXTENDING COUNTY PAVED ROAD 1331.41' ±



T 2 S. SECTION 35
T 3 S. SECTION 35
NORTH EAST 1/4



LEGEND
○ DENOTES PERMANENT MEASURE POINT (P.M.P.)
○ DENOTES PERMANENT CONTROL POINT (C.P.P.)
○ DENOTES 20' UTILITY EASEMENT

ADOPTION AND DEDICATION

KNOW ALL MEN BY THESE PRESENTS THAT WALTER LAWSON AND HIS WIFE, NORA LAWSON AND LEVIE E. LAWSON AND HIS WIFE, FRANCES L. LAWSON, OWNERS, HAVE CAUSED THE LANDS HEREIN DESCRIBED TO BE SURVEYED, SUBDIVIDED AND PLATTED, TO BE KNOWN AS COUNTRY VILLAGE AND THAT THE ROAD AND EASEMENTS AS SHOWN ARE HEREBY DEDICATED TO THE PERPETUAL USE OF THE PUBLIC FOR HIGHWAY PURPOSES HEREON SET FORTH.

Walter Lawson
Nora Lawson
Witnesses: Charles M. Thomas, President; William J. Amette, Vice President; Charles R. Thomas, Secretary; Lewis E. Lawson, Treasurer; Frank L. Lawson, Secretary.

STATE OF FLORIDA COUNTY OF SUWANNEE:
I HEREBY CERTIFY THAT ON THIS 21st DAY OF August A.D. 1982, BEFORE ME, Notary Public, Walter Lawson and his wife, Nora Lawson, and LeVie E. Lawson and his wife, Frances L. Lawson, as owners, to be known to be the individuals described in and who executed the foregoing plat, and they acknowledged the execution thereof.

WITNESSE MY HAND AND SEAL AT Live Oak STATE OF FLORIDA, THIS 19th DAY OF August A.D. 1982.

DEDICATION FOR HIGHWAY:
THIS IS TO CERTIFY THAT THE NORTH FLORIDA PRODUCTION CREDIT ASSOCIATION, A CORPORATION UNDER THE LAWS OF THE STATE OF FLORIDA, BEING A NONPROFIT CORPORATION, HAS CAUSED THE LANDS DESCRIBED IN THE FOREGOING DESCRIPTION OF THIS PLAT, HEREBY JOINED AND MADE THESESELVES A PARTY OF THE DEDICATION AND PURPOSES THEREIN EXPRESSED AND DEDICATE THE ROAD AND EASEMENTS SHOWN ON THIS PLAT TO THE PUBLIC.

IN WITNESS WHEREOF THE NORTH FLORIDA PRODUCTION CREDIT ASSOCIATION HAS CAUSED THESE PRESENTS TO BE SIGNED BY ITS PRESIDENT, CHARLES M. THOMAS, AND HIS VICE PRESIDENT, WILLIAM J. AMETTE, BY AND WITH THE AUTHORITY OF ITS BOARD OF DIRECTORS IN ITS NAME AND WITH ITS CORPORATE SEAL AFFIXED THIS 19th DAY OF August A.D. 1982.

THE NORTH FLORIDA PRODUCTION CREDIT ASSOCIATION

APPROVED BY BOARD OF COUNTY COMMISSIONERS:
SUWANNEE COUNTY, FLORIDA.

CERTIFICATE OF CLERK:
I HEREBY CERTIFY THAT THE FOREGOING PLAT HAVING BEEN DULY APPROVED BY THE BOARD OF COUNTY COMMISSIONERS OF SUWANNEE COUNTY, FLORIDA, WAS ACCEPTED AND FILED FOR RECORD THIS 21st DAY OF August A.D. 1982, IN PLAT BOOK 1 OF THE PUBLIC RECORDS OF SUWANNEE COUNTY, FLORIDA.

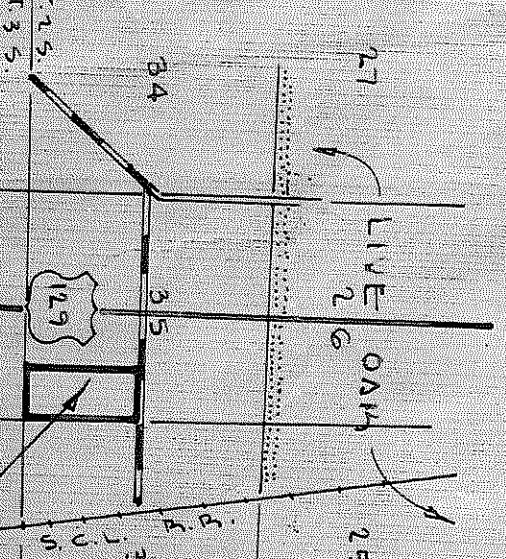
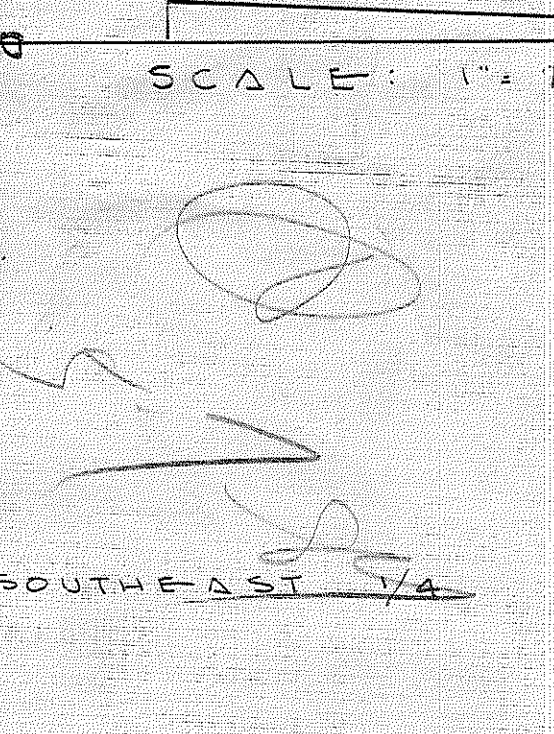
SURVEYOR'S CERTIFICATE:
I HEREBY CERTIFY THAT THIS PLAT IS A TRUE AND CORRECT REPRESENTATION OF THE LANDS SURVEYED AND SHOWN HEREON THAT PERMANENT MEASURE POINTS AND PERMANENT CONTROL POINTS HAVE BEEN PLACED AS SHOWN, AND THAT THE SURVEY DATA SHOWN, COMPLY WITH THE REQUIREMENTS OF CHAPTER 117, FLORIDA STATUTES.

VIICINITY MAP
SHOWING LOCATION OF SECTION 35 IN TOWNSHIP 2 SOUTH, RANGE 13 EAST, SUWANNEE COUNTY, FLORIDA.

SURVEYOR'S NOTES:
1) BEARINGS SHOWN HEREON, ARE PROTECTED FROM U.S. HIGHWAY No. 179.
2) FOR SECTION BREAKDOWN, SEE JOB FILE IN THIS OFFICE.

PREPARED BY
J. SHEPARD FRISCH & ASSOC.
LAND SURVEYORS
P.O. BOX 580
LIVE OAK, FLA. 32060
PHONE: 904-368-4881

FOR Computer mapping A-A-96



VIICINITY MAP
NET TO STATE

SURVEYOR'S NOTES:
1) BEARINGS SHOWN HEREON, ARE PROTECTED FROM U.S. HIGHWAY No. 179.
2) FOR SECTION BREAKDOWN, SEE JOB FILE IN THIS OFFICE.

PREPARED BY
J. SHEPARD FRISCH & ASSOC.
LAND SURVEYORS
P.O. BOX 580
LIVE OAK, FLA. 32060
PHONE: 904-368-4881