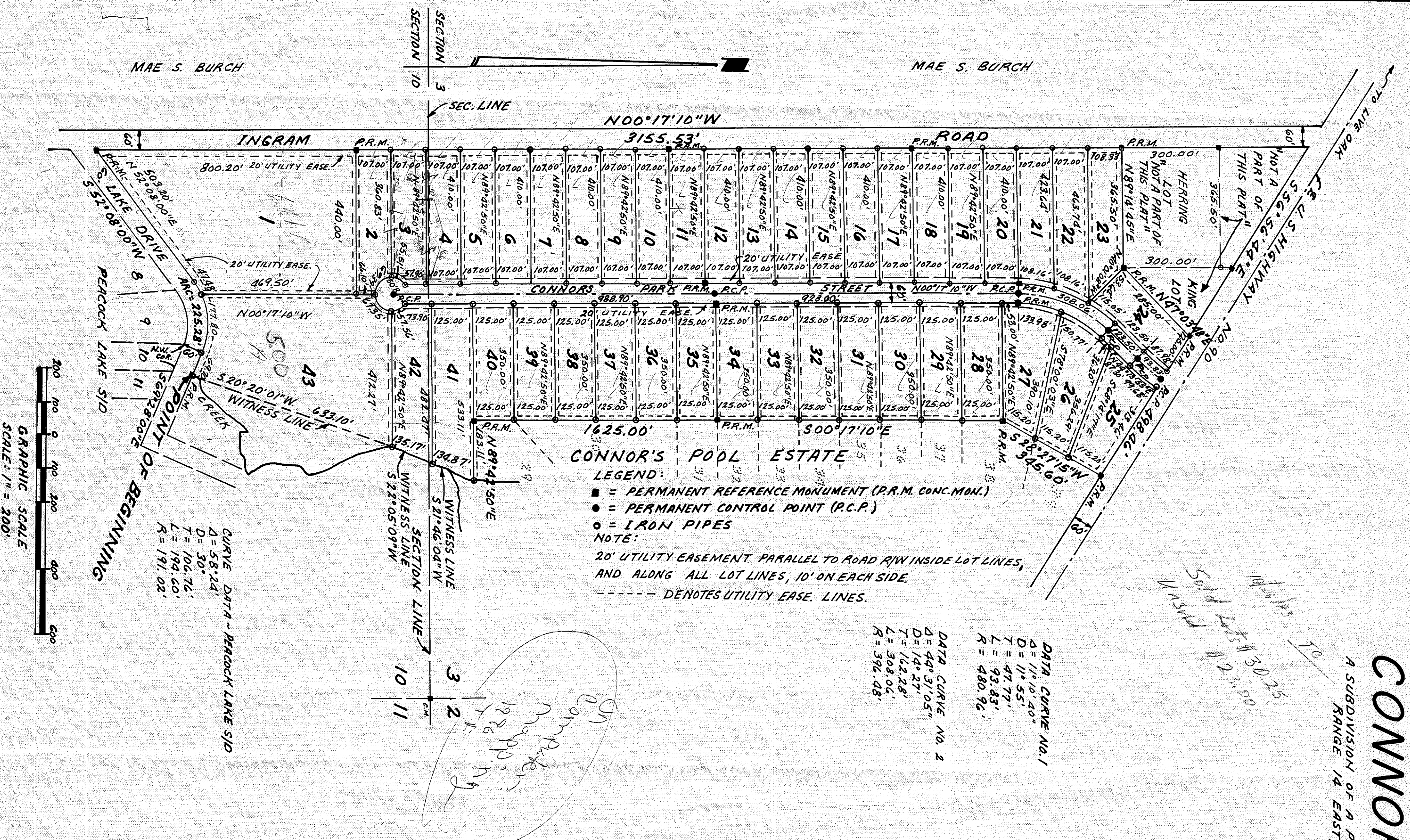


CONNOR'S PARK

A SUBDIVISION OF A PART OF SECTIONS 3 AND 10, TOWNSHIP 3 SOUTH, RANGE 14 EAST, SUWANNEE COUNTY, FLORIDA



DESCRIPTION:

COMMENCING AT THE NORTHWEST CORNER OF LOT 10 OF "PEACOCK LAKE SUBDIVISION," A RECORDED SUBDIVISION ON FILE IN CLERK'S OFFICE OF THE CIRCUIT COURT, SUWANNEE COUNTY, FLORIDA; BEING IN SECTION 10, TOWNSHIP 3 SOUTH, RANGE 14 EAST, SUWANNEE COUNTY, FLORIDA; THENCE RUN N 20° 32' E, 60.00 FEET TO THE NORTH RIGHT-OF-WAY LINE OF LAKE DRIVE; THENCE RUN S 69° 28' 00" E, ALONG SAID RIGHT-OF-WAY LINE 68.70 FEET TO A CONCRETE MARKER FOR THE POINT OF BEGINNING; THENCE RUN N 69° 28' 00" W, ALONG WITH AN ARC OF 235.28 FEET; THENCE CONTINUE ALONG THE CURVE; THENCE RUN ALONG THE CURVE CONCAVE TO THE LEFT, FEET TO A CONCRETE MARKER BEING THE INTERSECTION OF THE NORTH RIGHT-OF-WAY LINE OF LAKE DRIVE S 52° 08' 00" W, 503.20 FEET TO A CONCRETE MARKER; THENCE RUN N 00° 17' 10" W ALONG THE EAST R/W LINE OF INGRAM ROAD 3155.53 FEET TO A CONCRETE MARKER, BEING THE SOUTHWEST CORNER OF HERRING LOT; THENCE RUN N 89° 14' 45" E ALONG THE SOUTH BOUNDARY OF HERRING LOT, 365.50 FEET TO A CONCRETE MARKER; THENCE RUN N 47° 03' 48" E, 285.00 FEET TO A CONCRETE MARKER ON THE SOUTH RIGHT-OF-WAY LINE OF U.S. HIGHWAY NO. 90; THENCE RUN S 56° 56' 04" E ALONG SAID SOUTH R/W LINE, 498.46 FEET TO A CONCRETE MARKER; THENCE RUN S 18° 27' 15" W, 345.60 FEET TO A CONCRETE MARKER; THENCE RUN S 00° 17' 10" E, 1625.00 FEET TO A CONCRETE MARKER; THENCE RUN N 89° 42' 50" E, 183.11 FEET TO THE CENTER OF A CREEK OR RAUVINE BACK TO THE POINT OF BEGINNING; BEING AND LYING IN SECTIONS 3 AND 10, TOWNSHIP 3 SOUTH, RANGE 14 EAST, SUWANNEE COUNTY, FLORIDA.

DEDICATION:

KNOW ALL MEN BY THESE PRESENT THAT CONNOR'S PARK, INC., A FLORIDA CORPORATION AS OWNERS AND THE STATE EXCHANGE BANK A BANKING CORPORATION AS MORTGAGEES HAVE CAUSED THE LANDS HEREIN DESCRIBED TO BE SURVEYED, SUBDIVIDED AND PLATTED AS SHOWN ON THIS PLAT, TO BE KNOWN AS "CONNOR'S PARK" SUBDIVISION AND THAT THE DRIVES AS SHOWN HEREON ARE HEREBY DEDICATED TO THE PERPETUAL USE OF THE GENERAL PUBLIC, AND THE EASEMENTS AS SHOWN HEREON ARE HEREBY DEDICATED FOR THE PERPETUAL USE OF PUBLIC AND PRIVATE UTILITY COMPANIES FOR PROPER USES AND PURPOSES.

IN WITNESS WHEREOF THE ABOVE NAMED INDIVIDUALS HAVE HEREUNTO SET THEIR HANDS AND SEALS, AND HAVE CAUSED THESE PRESENT TO BE EXECUTED WITH THEIR SEALS AFFIXED HEREUNTO, THIS 20th DAY OF February, 1979 A.D.

WITNESSES
 BYRON EDWARDS, PRESIDENT
 SHEROD S. KEEN, SECRETARY
 CONNOR'S PARK, INC.

WITNESSES
 J. Edgar
 MORTGAGEES - STATE EXCHANGE BANK
 GILFORD I. CURRIE, VICE-PRESIDENT
 DONALD H. WILLIAMS, ASST. CASHIER

STATE OF FLORIDA:

COUNTY OF SUWANNEE:

I HEREBY CERTIFY THAT ON THIS DAY PERSONALLY APPEARED BEFORE ME, AN OFFICER DULY AUTHORIZED TO ADMINISTER OATHS AND TAKE ACKNOWLEDGMENTS, BYRON EDWARDS AS PRESIDENT, SHEROD S. KEEN AS SECRETARY, OF CONNOR'S PARK, INC., A FLORIDA CORPORATION, AND GILFORD I. CURRIE, VICE-PRESIDENT AND DONALD H. WILLIAMS, ASST. CASHIER, OF THE STATE EXCHANGE BANK, A BANKING CORPORATION, TO ME WELL KNOWN TO BE THE PERSONS DESCRIBED IN AND WHO EXECUTED THE FOREGOING DEDICATION AND ACKNOWLEDGED BEFOREME THAT THEY EXECUTED THE SAME FOR THE USES AND PURPOSES THEREIN EXPRESSED.

WITNESS MY SIGNATURE AND OFFICIAL SEAL AT LIVE OAK, IN THE COUNTY OF SUWANNEE AND STATE OF FLORIDA THIS 20th DAY OF February, A.D. 1979.

COUNTY COMMISSION APPROVAL:

EXAMINED AND APPROVED BY THE COUNTY COMMISSION OF SUWANNEE COUNTY, FLORIDA, THIS 15th DAY OF May, A.D. 1979.

SIGNED *[Signature]*, CHAIRMAN ATTEST *[Signature]*, CLERK

CLERK'S CERTIFICATE:
 THIS IS TO CERTIFY THAT THIS PLAT HAS BEEN FILED FOR RECORD IN PLAT BOOK 1, PAGE 205, OF THE PUBLIC RECORDS OF SUWANNEE COUNTY, FLORIDA THIS 19th DAY OF May, A.D. 1979.

SIGNED *[Signature]*, CLERK

SURVEYOR'S CERTIFICATE:
 I HEREBY CERTIFY THAT THIS PLAT IS A CORRECT REPRESENTATION OF THE LANDS AS SURVEYED UNDER MY DIRECTION AND SUPERVISION AND THAT THE SURVEY DATA COMPLIES WITH THE REQUIREMENTS OF CHAPTER NO. 177 OF THE LAWS OF THE STATE OF FLORIDA, AND THAT PERMANENT REFERENCE MONUMENTS AND PERMANENT CONTROL POINTS HAVE BEEN SET ACCORDING TO THE ABOVE REFERENCED LAWS AS SHOWN. SIGNED THIS 19th DAY OF Feb., A.D. 1979.

SIGNED *[Signature]*, REGISTERED LAND SURVEYOR FLORIDA REGISTRATION NO. 963

