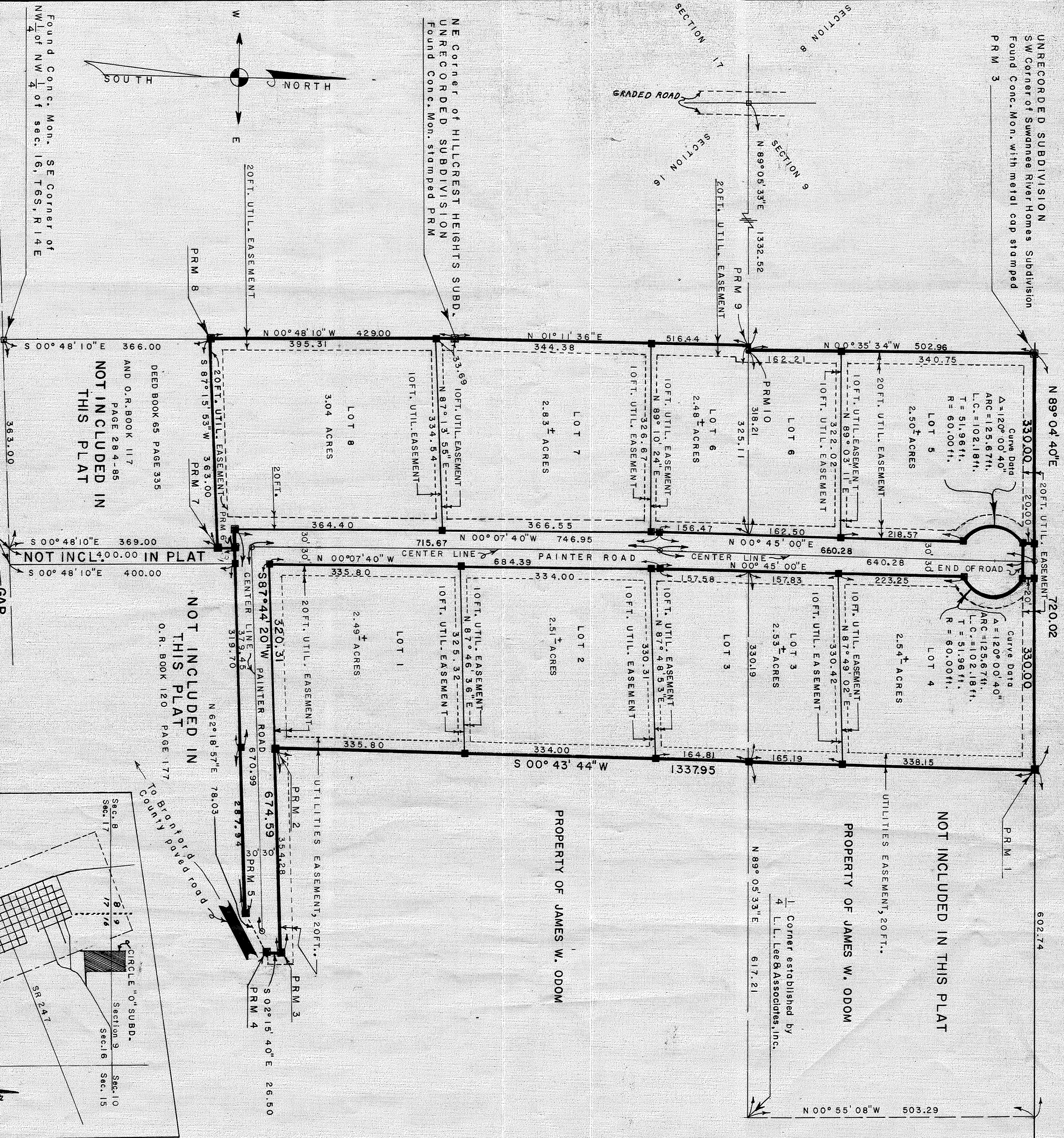


CIRCLE "O" SUBDIVISION

SUWANNEE COUNTY, FLORIDA

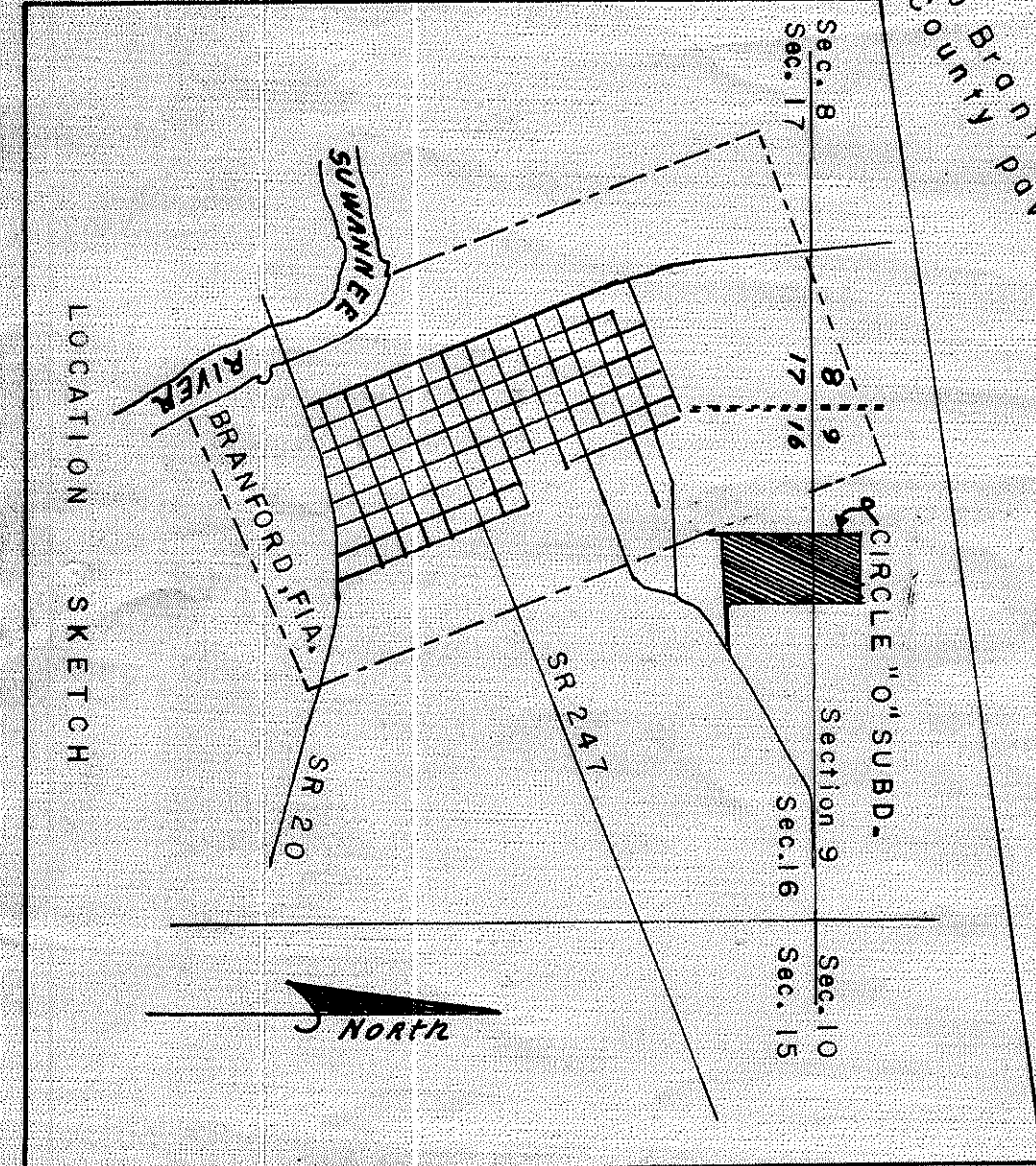
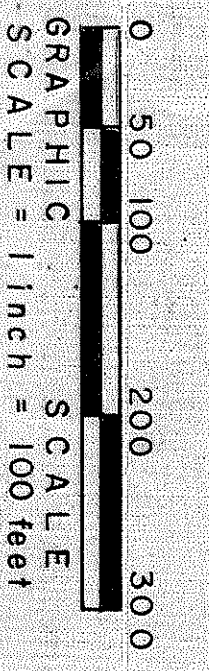
CAPTION: A parcel of land being situated in the SE $\frac{1}{4}$ of Section 9, T6S, R14E, Suwannee County, Florida, and being more particularly described as follows: Commence at the SW Corner of section 9, T6S, R14E, thence N89°05'33"E a distance of 1339.42 feet to a concrete monument being the SW Corner of the SE $\frac{1}{4}$ of SW $\frac{1}{4}$ of section 16, T6S, R14E, and being the Point of Beginning; thence S00°43'44"W a distance of 503.29 feet to a concrete monument; thence S89°05'33"E a distance of 708.41 ft. to the Point of Beginning and containing 8.25 acres more or less; and a parcel of land being situated in the NE $\frac{1}{4}$ of NW $\frac{1}{4}$ of section 16, T6S, R14E, and being the Point of Beginning; thence S01°11'36"E a distance of 516.44 ft. to a concrete monument; thence S00°48'10"E a distance of 429.00 ft. to a concrete monument thence N00°48'10"W a distance of 31.00 ft. to a concrete monument; thence N87°44'20"E a distance of 634.64 ft. to a concrete monument; thence N62°18'57"E a distance of 78.03 ft. to a concrete monument; thence N02°15'40"W a distance of 26.50 ft. to a concrete monument; thence S87°44'20"W a distance of 354.28 ft. to a concrete monument; thence N00°43'44"E a distance of 834.61 ft. to a concrete monument; thence S89°05'33"W a distance of 715.31 ft. to the Point of Beginning and containing 15.59 acres more or less.



UNRECORDED SUBDIVISION
 SW Corner of Suwannee River Homes Subdivision
 Found Conc. Mon. with metal cap stamped
 PRM 3

NOT INCLUDED IN THIS PLAT
 DEED BOOK 65 PAGE 335
 AND O.R. BOOK 117
 PAGE 284-85
 NOT INCLUDED IN THIS PLAT
 O.R. BOOK 120 PAGE 177

Legend
 Found Concrete Monument
 Set Concrete Monument or PRM
 Set P.C.P.
 Bearing projected from L.L. Lee & Associates, Inc. File B 17-43
 Road Right-of-Way shown on this plat is 60 feet.



DEDICATION
 This subdivision to be known as CIRCLE "O" and as described herein, has been made with the free consent and in accordance with the desires of the undersigned owner, all streets and easements as shown are dedicated to the public forever.
 Witness: James W. Odom
 Owner

STATE OF FLORIDA—COUNTY OF SUWANNEE
 I HEREBY CERTIFY that on this day personally appeared before me Mr. James Wallace Odom known to me to be the individual and they acknowledged the foregoing this 25th day of June, 1978 A.D.
 Notary Public
 My Commission Expires: _____
 My Signature: _____
 My Expiration: _____

SURVEYOR'S CERTIFICATE
 I HEREBY CERTIFY that this plat is a correct representation of the lands surveyed and described in the title hereof and said survey was made under my direct supervision and all PRM'S and PCP'S have been set and all the laws of chapter 177 have been complied with.
Walter B. Smith
 Registered Professional Land Surveyor No. 1995 FLORIDA
 DATE August 8, 1977
 2500 NW 55th Blvd.
 Gainesville, Florida 32601

COUNTY COMMISSIONER'S APPROVAL
 I HEREBY CERTIFY that this plat has been approved by the Board of County Commissioner's this 14th day of February, 1978 A.D.
 COUNTY CLERK'S APPROVAL
 THIS PLAT has been filed for record on the public records of Suwannee County, Florida, this 14th day of February, 1978 A.D.
 CLERK