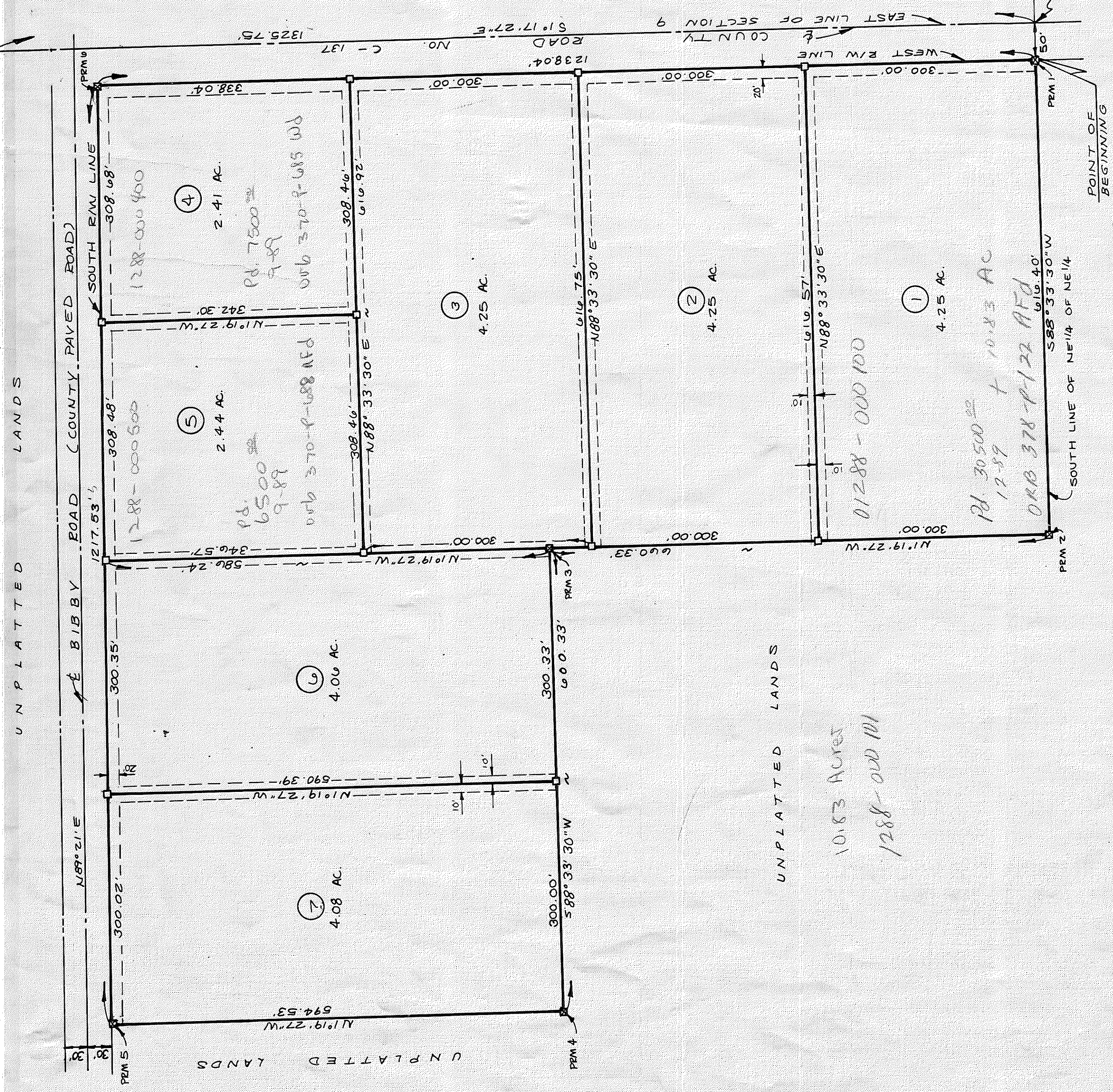


# BIBBY'S MEADOW

IN  
THE NE 1/4 OF NE 1/4, SECTION 9, T6-S, R15-E  
SUWANNEE COUNTY, FLORIDA

NE CORNER  
SEC. 9, T. 6-S, R. 15-E



# 01288-000100  
- 000 700  
OB  
3-26-90

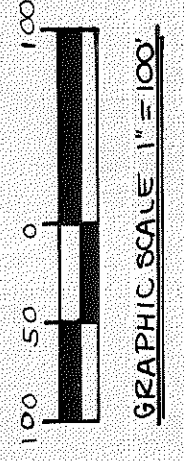
### DESCRIPTION

COMMENCE AT THE SOUTHEAST CORNER OF THE NE 1/4 OF THE NE 1/4, SECTION 9, TOWNSHIP 6 SOUTH, RANGE 15 EAST, SUWANNEE COUNTY, FLORIDA, THENCE RUN S88°33'30\"/>

Map Keyd 5-7-90

Lots 4 4 5 - 2250<sup>00</sup> Per AC.  
Lots 1, 2, 3, 6 & 7 - 2000<sup>00</sup> Per AC.  
10.83 AC - 1500<sup>00</sup> Per AC.

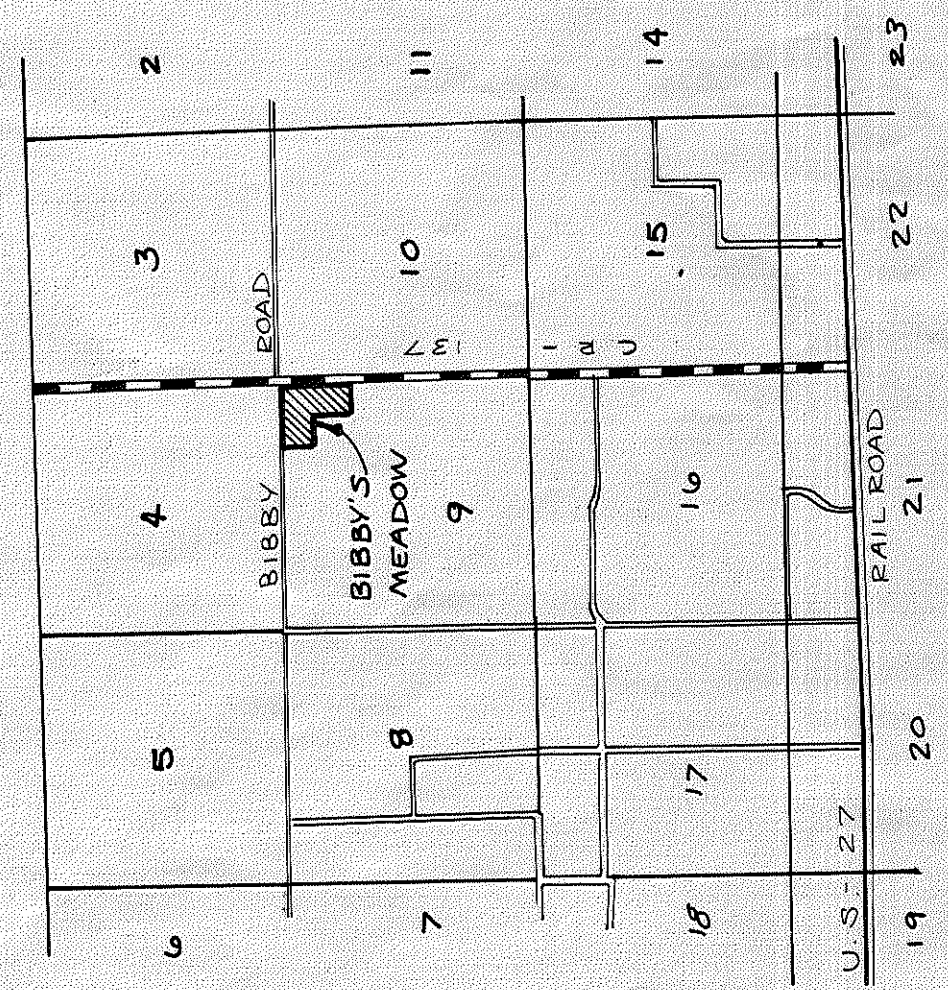
On Computer Mapping  
2-29-98  
17



LEGEND  
□ 4\"/>

- NOTES:  
1. PRELIMINARY PLAT APPROVED BY BOARD OF COUNTY COMMISSIONERS ON MAY 16, 1989.  
2. ERODE OF CLOSURE IS 1:1019.098  
3. TOTAL AREA IN SUBDIVISION IS 25.74 ACRES  
4. BEARINGS PROJECTED FROM CENTERLINE COUNTY ROAD NO. 137 ACCORDING TO D.O.T. R/W MAP

SE CORNER  
NE 1/4 OF NE 1/4  
SEC. 9, T. 6-S, R. 15-E



LOCATION MAP  
SECTION 9, T. 6-S, R. 15-E

### ADOPTION AND DEDICATION

KNOW ALL MEN BY THESE PRESENTS THAT H.O. AND HIS WIFE VIOLET BIBBY AS OWNERS HAVE CAUSED THE LANDS HEREIN DESCRIBED TO BE SURVEYED, SUBDIVIDED AND PLATTED TO BE KNOWN AS "BIBBY'S MEADOW" AND THAT ALL ROADS AND EASEMENTS AS SHOWN ARE HEREBY DEDICATED TO THE PERPETUAL USE OF THE PUBLIC FOR PROPER USES AND PURPOSES HEREON STATED.

H.O. BIBBY  
WITNESS  
VIOLET BIBBY  
WITNESS

STATE OF FLORIDA, COUNTY OF SUWANNEE  
I HEREBY CERTIFY THAT ON THIS DAY OF A.D. 1989, BEFORE ME PERSONALLY APPEARED H.O. BIBBY AND HIS WIFE VIOLET, AS OWNERS, TO ME KNOWN TO BE THE INDIVIDUALS DESCRIBED IN AND WHO EXECUTED THE FOREGOING DEDICATION AND THEY ACKNOWLEDGED THE EXECUTION THEREOF. WITNESS MY HAND AND SEAL AT COUNTY OF SUWANNEE, STATE OF FLORIDA THIS DAY OF A.D. 1989.

SIGNED  
NOTARY PUBLIC, STATE OF FLORIDA  
MY COMMISSION EXPIRES

### SURVEYORS CERTIFICATE

I HEREBY CERTIFY THAT THIS PLAT IS A TRUE AND CORRECT REPRESENTATION OF THE LANDS SURVEYED AND SHOWN HEREON, THAT THE SURVEY WAS MADE UNDER MY RESPONSIBLE DIRECTION AND SUPERVISION, THAT PERMANENT REFERENCE MONUMENTS (PRM'S) AND PERMANENT CONTROL POINTS (PCP'S) HAVE BEEN PLACED AS SHOWN AND THAT THE SURVEY DATA SHOWN HEREON COMPLIES WITH ALL OF THE REQUIREMENTS OF CHAPTER 177, FLORIDA STATUTES AND THAT THE PROPERTY PLATTED DOES NOT FALL WITHIN A FLOOD HAZARD AREA AS PER THE FLOOD INSURANCE RATE MAP OF THE FEDERAL EMERGENCY MANAGEMENT AGENCY, PANEL NO. 120300 0405 A EXCEPT AS SHOWN

SIGNED W. C. Hale  
N.C. HALE, LAND SURVEYOR  
FLORIDA CERT. NO. 1519  
DATE June 5, 1989

APPROVED BY BOARD OF COUNTY COMMISSIONERS SUWANNEE COUNTY, FL.

EXAMINED AND APPROVED BY THE BOARD OF COUNTY COMMISSIONERS, SUWANNEE COUNTY, FLORIDA THIS DAY OF June, A.D., 1989.  
SIGNED John S. Woodruff ATTEST John S. Woodruff  
CHAIRMAN Clerk by Elaine Johnson

### CERTIFICATE OF CLERK

I HEREBY CERTIFY THAT THE FOREGOING PLAT, HAVING BEEN DULY APPROVED BY THE BOARD OF COUNTY COMMISSIONERS OF SUWANNEE COUNTY, FLORIDA WAS ACCEPTED AND FILED FOR RECORD THIS DAY OF June, A.D., 1989 IN PLAT BOOK 1, PAGE 384 OF THE PUBLIC RECORDS OF SUWANNEE COUNTY, FLORIDA.

John S. Woodruff  
CLERK OF COUNTY COURT  
SUWANNEE COUNTY, FLORIDA

BUILDING PERMIT NOTE  
A BUILDING PERMIT FOR THE CONSTRUCTION OF ANY RESIDENTIAL BUILDING OR STRUCTURE SHALL NOT BE ISSUED FOR LESS THAN ONE ENTIRE LOT AS DESIGNATED ON THIS SUBDIVISION PLAT, EXCEPT AS OTHERWISE PROVIDED BY LAW.

NOTICE  
THERE MAY BE ADDITIONAL RESTRICTIONS THAT ARE NOT RECORDED ON THIS PLAT THAT MAY BE FOUND IN THE PUBLIC RECORDS OF THIS COUNTY.

EASEMENT NOTE  
THE EASEMENTS SHOWN HEREON FOR UTILITIES SHALL ALSO BE EASEMENTS FOR THE CONSTRUCTION, INSTALLATION, MAINTENANCE AND OPERATION OF CABLE TELEVISION SERVICES.