

NOTICE: This plat, as recorded in its graphic form, is the official depiction of the subdivided lands described herein and will be deemed as such, unless a surveyor or any other graphic professional is shown in the public records of the plat that they be found in the public records of the county.

NOTICE: All related utility assessments shall provide that each assessment shall also be an assessment for the construction, installation, maintenance, and operation of electric, gas, water, sewer, telephone, cable television, and other services. All such utility assessments shall be in accordance with the rules and regulations of the applicable utility and shall be the responsibility of a public utility, if applicable, and shall be solely responsible for the damages.

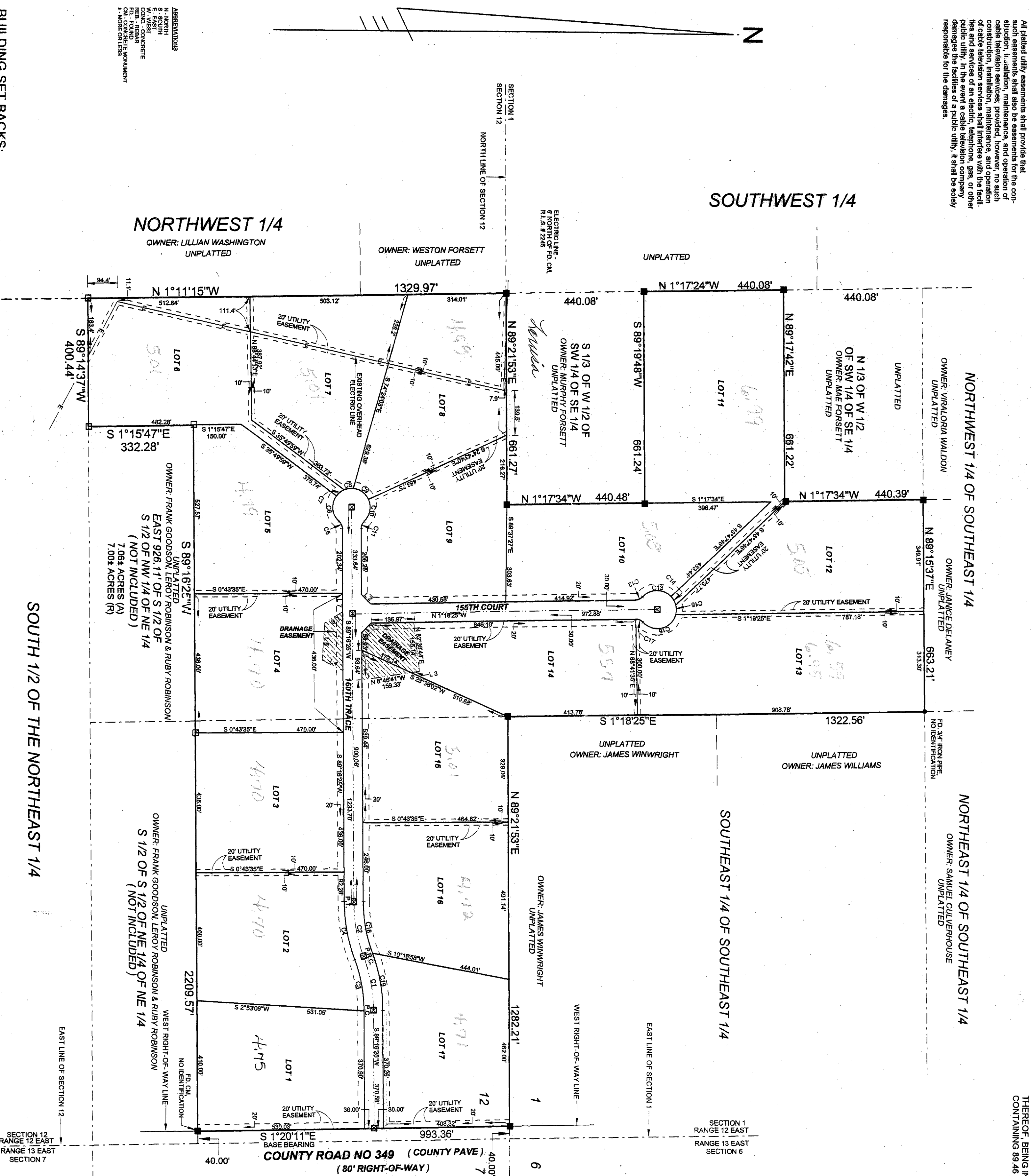
GRAPHIC SCALE  
SCALE IN FEET 1" = 200 FEET

200 0 200 400

# WINDING FOREST

PLAT BOOK 1 PAGE 522

THE EAST 1/2 OF THE SOUTHWEST 1/4 OF THE SOUTHEAST 1/4 OF SECTION 12, RANGE 12 EAST, TOWNSHIP 4 SOUTH, RANGE 12 EAST, THE NORTHWEST 1/4 OF THE SOUTHWEST 1/4, LESS THE EAST 828.11 FEET OF THE SOUTH 1/2 OF THE SOUTH 1/2 THEREOF, THAT PART OF THE SOUTHWEST 1/4 OF SECTION 12, TOWNSHIP 4 SOUTH, RANGE 12 EAST, SWANNEE COUNTY, FLORIDA, CONTAINING 89.46 ACRES MORE OR LESS.



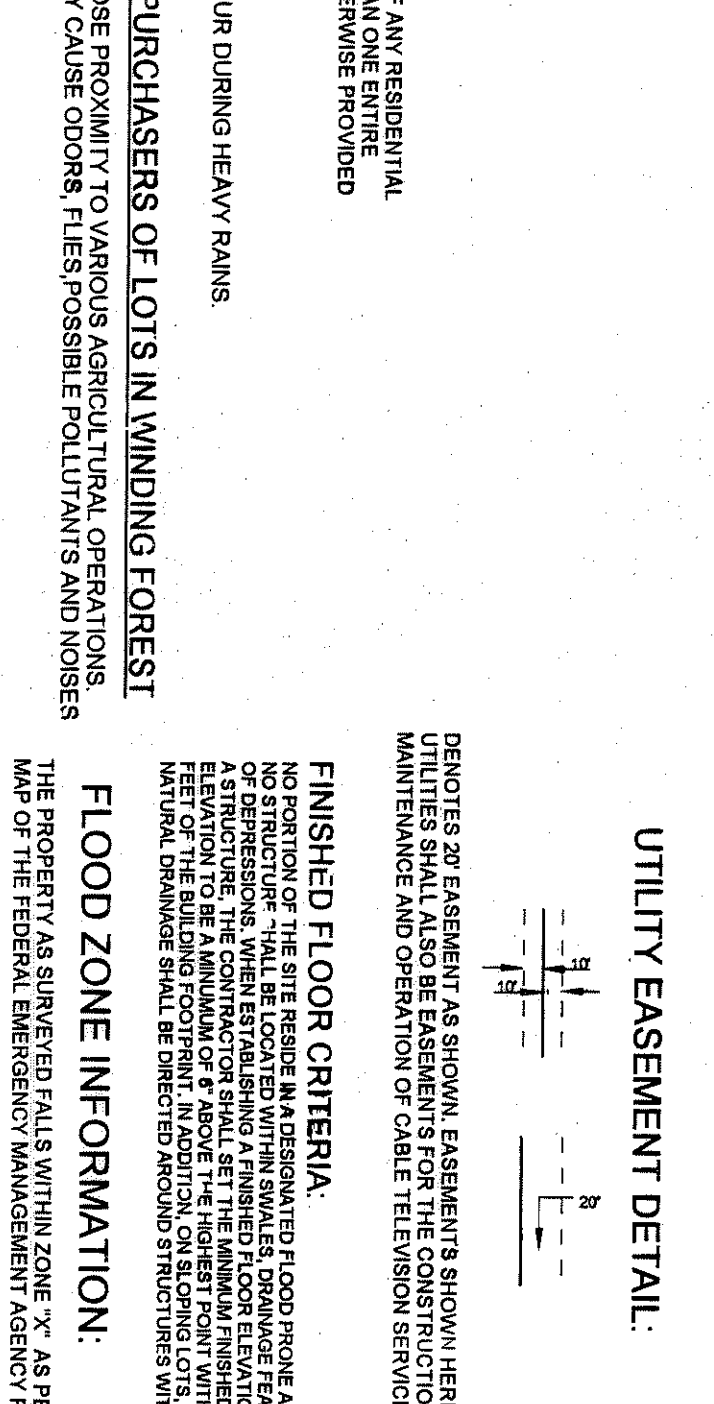
**ZONING:**  
A-1 (AGRICULTURAL 1) - ONE DWELLING UNIT PER FIVE ACRES

**BUILDING SET BACKS:**  
FRONT - 30 FEET  
REAR - 15 FEET

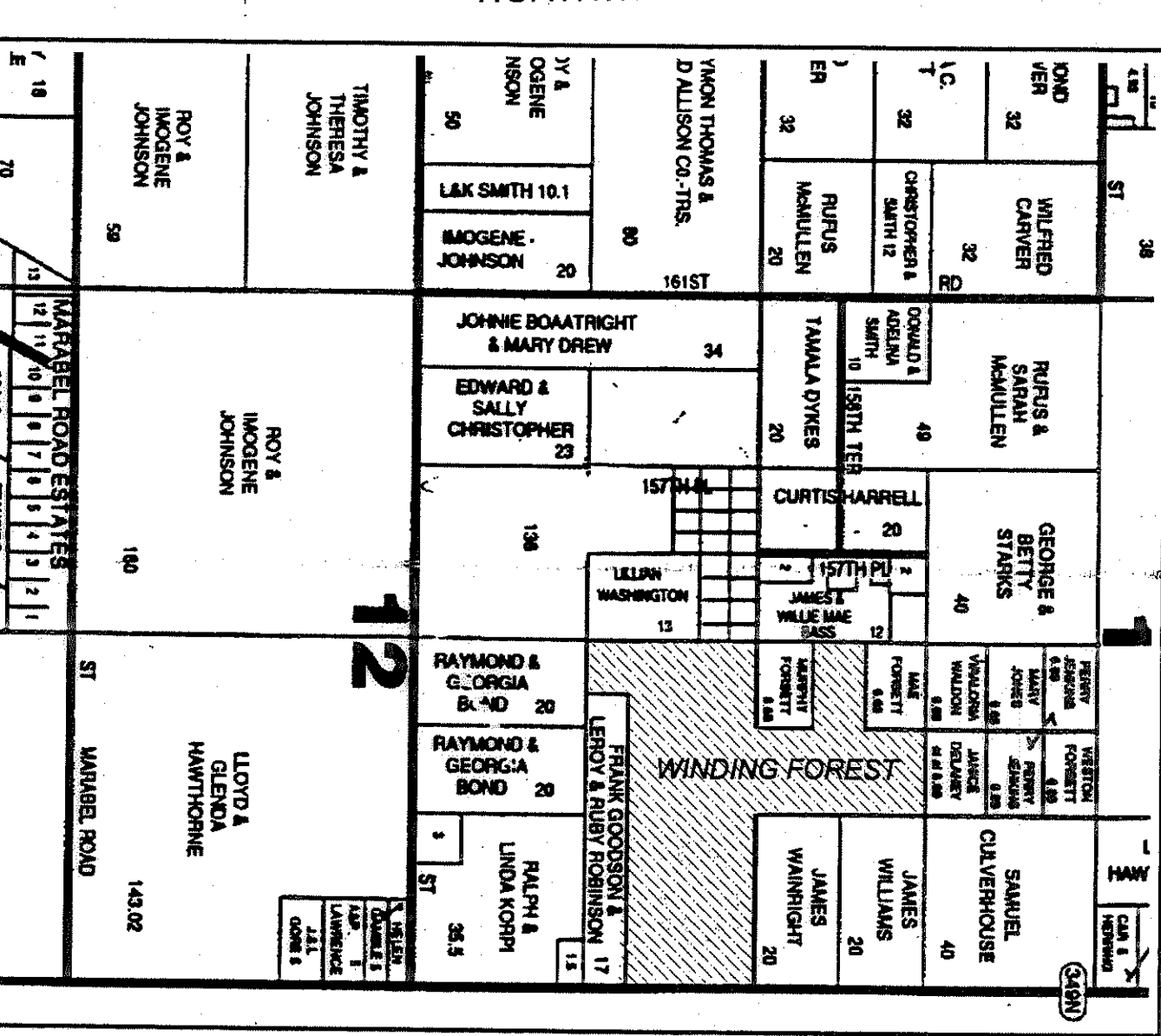
**BUILDING PERMIT NOTE:**  
A BUILDING PERMIT FOR THE CONSTRUCTION OR LOCATION OF ANY RESIDENTIAL LOT AS DEPICTED ON THIS SUBDIVISION PLAN, EXCEPT AS OTHERWISE PROVIDED BY LAW.

**SPECIAL NOTE:**  
VARIES FROM COUNTY ROAD NO. 349 MAY OCCUR DURING HEAVY RAINS.

**NOTICE AND WARNING TO PROSPECTIVE PURCHASERS OF LOTS IN WINDING FOREST:**  
THERE ARE LOTS IN THE SUBDIVISION WHICH ARE IN CLOSE PROXIMITY TO VARIOUS AGRICULTURAL OPERATIONS, THAT MAY BE OPERATING. FLOOD ZONE INFORMATION, AS PER THE FEDERAL BUREAU OF SURVEYING MAP OF THE FEDERAL BUREAU OF SURVEYING AGENCY PANEL NO. C23000225.



Curve	Bearing	Distance	Radius	Chord
1	S 89° 14' 37" W	400.44	500.00	239.82
2	S 89° 14' 37" W	400.44	500.00	239.82
3	N 89° 14' 37" E	400.44	500.00	239.82
4	N 89° 14' 37" E	400.44	500.00	239.82
5	S 89° 14' 37" W	400.44	500.00	239.82
6	S 89° 14' 37" W	400.44	500.00	239.82
7	S 89° 14' 37" W	400.44	500.00	239.82



**LEGEND AND NOTES:**

- DENOTES P.A.M. (PERMANENT REFERENCE MONUMENT) SET, 4" X 4" X 24" CONCRETE MONUMENT, STAMPED L.B. # 770
- DENOTES P.A.M. (PERMANENT REFERENCE MONUMENT) ROUND, 4" X 4" X 24" CONCRETE MONUMENT, L.B. # 770
- ▧ DENOTES 2" X 2" ALUMINUM PLATE (STAMPED L.B. # 770) SET (S 120° 11' E)
- 1) BEARINGS BASED ON THE EAST LINE OF SECTION 12 (S 120° 11' E)
- 2) FOR SECTION INFORMATION, SEE JOB FILE THIS OFFICE
- 3) 9" PIPES, UTILITY CO. STAGES, L.B. # 770, SET ON ALL LOT CORNERS, UNLESS NOTED OTHERWISE.

**ADoption AND DEDICATION:**

KNOW ALL MEN BY THESE PRESENTS THAT THE SWANNEE COUNTY, FLORIDA, HAS ADOPTED AND DEDICATED THE ABOVE DESCRIBED TRACT OF LAND AS SHOWN ON THE PLAT THEREOF AND THAT THE ROADS, STREETS AND EASEMENTS FOR UTILITIES, DRAINAGE AND OTHER PURPOSES HEREON SHOWN ARE HEREBY DEDICATED TO THE PUBLIC USE OF THE PEOPLE.

**STATE OF FLORIDA, COUNTY OF SWANNEE**

**DEDICATION OF MORTGAGE:**

THIS IS TO CERTIFY THAT MORTGAGE BANK AS SUCCESSOR BY MERGER WITH ONE BANK, BEING CORPORATELY UNDER THE CONTROL OF THE STATE OF FLORIDA, HAS ASSIGNED TO THE SWANNEE COUNTY, FLORIDA, THE MORTGAGE ON THE ABOVE DESCRIBED TRACT OF LAND AND THAT THE ROADS, STREETS AND EASEMENTS FOR UTILITIES, DRAINAGE AND OTHER PURPOSES HEREON SHOWN ARE HEREBY DEDICATED TO THE PUBLIC USE OF THE PEOPLE.

**NOTARY PUBLIC, STATE OF FLORIDA**

**MY COMMISSION EXPIRES:**

**ADoption AND DEDICATION:**

KNOW ALL MEN BY THESE PRESENTS THAT THE SWANNEE COUNTY, FLORIDA, HAS ADOPTED AND DEDICATED THE ABOVE DESCRIBED TRACT OF LAND AS SHOWN ON THE PLAT THEREOF AND THAT THE ROADS, STREETS AND EASEMENTS FOR UTILITIES, DRAINAGE AND OTHER PURPOSES HEREON SHOWN ARE HEREBY DEDICATED TO THE PUBLIC USE OF THE PEOPLE.

**CERTIFICATE OF CLERK:**

I HEREBY CERTIFY THAT THE FOREGOING HAS BEEN REVIEWED AND APPROVED BY THE BOARD OF COUNTY COMMISSIONERS OF SWANNEE COUNTY, FLORIDA, ON THE DAY OF OCT 21, 2005, IN ACCORDANCE WITH THE PUBLIC RECORDS OF SAID SWANNEE COUNTY, FLORIDA.

**APPROVED BY BOARD OF COUNTY COMMISSIONERS, SWANNEE COUNTY, FLORIDA.**

**DATE:** 10/21/05

**NOTARY PUBLIC, STATE OF FLORIDA**

**MY COMMISSION EXPIRES:**

**ADoption AND DEDICATION:**

KNOW ALL MEN BY THESE PRESENTS THAT THE SWANNEE COUNTY, FLORIDA, HAS ADOPTED AND DEDICATED THE ABOVE DESCRIBED TRACT OF LAND AS SHOWN ON THE PLAT THEREOF AND THAT THE ROADS, STREETS AND EASEMENTS FOR UTILITIES, DRAINAGE AND OTHER PURPOSES HEREON SHOWN ARE HEREBY DEDICATED TO THE PUBLIC USE OF THE PEOPLE.

**STATE OF FLORIDA, COUNTY OF SWANNEE**

**DEDICATION OF MORTGAGE:**

THIS IS TO CERTIFY THAT MORTGAGE BANK AS SUCCESSOR BY MERGER WITH ONE BANK, BEING CORPORATELY UNDER THE CONTROL OF THE STATE OF FLORIDA, HAS ASSIGNED TO THE SWANNEE COUNTY, FLORIDA, THE MORTGAGE ON THE ABOVE DESCRIBED TRACT OF LAND AND THAT THE ROADS, STREETS AND EASEMENTS FOR UTILITIES, DRAINAGE AND OTHER PURPOSES HEREON SHOWN ARE HEREBY DEDICATED TO THE PUBLIC USE OF THE PEOPLE.

**NOTARY PUBLIC, STATE OF FLORIDA**

**MY COMMISSION EXPIRES:**

**ADoption AND DEDICATION:**

KNOW ALL MEN BY THESE PRESENTS THAT THE SWANNEE COUNTY, FLORIDA, HAS ADOPTED AND DEDICATED THE ABOVE DESCRIBED TRACT OF LAND AS SHOWN ON THE PLAT THEREOF AND THAT THE ROADS, STREETS AND EASEMENTS FOR UTILITIES, DRAINAGE AND OTHER PURPOSES HEREON SHOWN ARE HEREBY DEDICATED TO THE PUBLIC USE OF THE PEOPLE.

**STATE OF FLORIDA, COUNTY OF SWANNEE**

**DEDICATION OF MORTGAGE:**

THIS IS TO CERTIFY THAT MORTGAGE BANK AS SUCCESSOR BY MERGER WITH ONE BANK, BEING CORPORATELY UNDER THE CONTROL OF THE STATE OF FLORIDA, HAS ASSIGNED TO THE SWANNEE COUNTY, FLORIDA, THE MORTGAGE ON THE ABOVE DESCRIBED TRACT OF LAND AND THAT THE ROADS, STREETS AND EASEMENTS FOR UTILITIES, DRAINAGE AND OTHER PURPOSES HEREON SHOWN ARE HEREBY DEDICATED TO THE PUBLIC USE OF THE PEOPLE.

**NOTARY PUBLIC, STATE OF FLORIDA**

**MY COMMISSION EXPIRES:**