

Jackson Heights

JACKSON HEIGHTS

PLAT BOOK 1 PAGE 526

THE SOUTH 1/2 OF THE NORTHEAST 1/4 OF SECTION 28 AND THAT PART OF THE SOUTHWEST 1/4 OF THE NORTHWEST 1/4 OF SECTION 27, LYING WEST OF 129TH ROAD RIGHT-OF-WAY, ALL BEING IN TOWNSHIP 3 SOUTH, RANGE 13 EAST, SUWANNEE COUNTY, FLORIDA, CONTAINING 80.75 ACRES MORE OR LESS.

LEGEND AND NOTES:

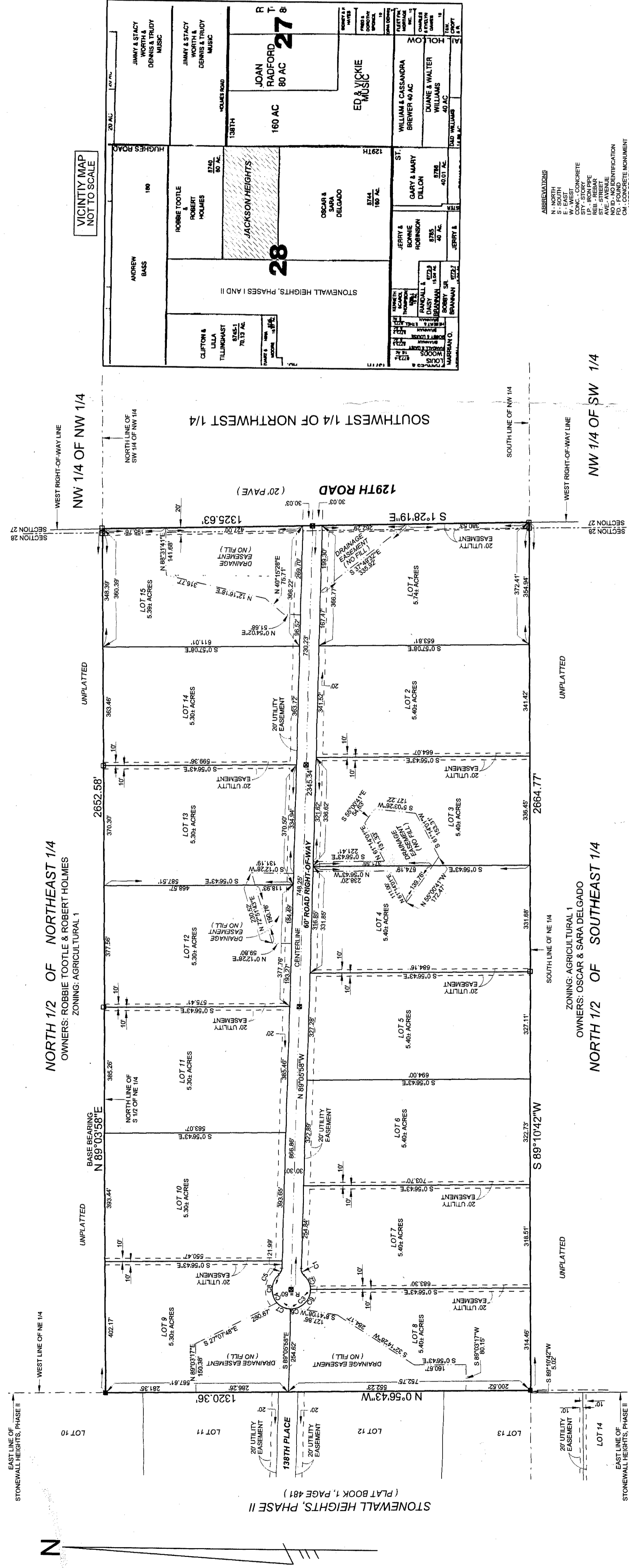
- DENOTES P.R.M. (PERMANENT REFERENCE MONUMENT) SET.
4" x 4" x 24" CONCRETE MONUMENT, STAMPED L.B. # 7170
■ DENOTES P.R.M. (PERMANENT REFERENCE MONUMENT) FOUND.
4" x 4" x 24" CONCRETE MONUMENT, L.B. # 7170
⊗ DENOTES P.C.P. (PERMANENT CONTROL POINT) 1.25" x 2" ALUMINUM PLATE
1" DIA. GALVANIZED IRON PIPE SET
1. 4" x 4" x 24" CONCRETE MONUMENT, STAMPED L.B. # 7170
2. 1/2" DIA. GALVANIZED IRON PIPE SET
3. 4" x 4" x 24" CONCRETE MONUMENT, STAMPED L.B. # 7170
SET ON ALL LOT CORNERS, UNLESS NOTED OTHERWISE.

NOTICE: This plat, as recorded in the graphic form, is the official...
All easements shown on this plat shall be as shown...
Such easements shall also be easements for the construction, installation, maintenance, and operation of...

NOTICE: All easements shown on this plat shall be as shown...
Such easements shall also be easements for the construction, installation, maintenance, and operation of...

GRAPHIC SCALE
SCALE IN FEET = 1" = 200 FEET

5-17-06
ON 2001 MAP
U8741-070010
U10150



- Lot 1 drainage easement - 1.19 AC
Lot 3 drainage easement - 1.28 AC
Lot 4 drainage easement - .18 AC
Lot 8 drainage easement - 3.41 AC
Lot 9 drainage easement - 1.87 AC
Lot 12 drainage easement - .34 AC
Lot 13 drainage easement - .13 AC
Lot 15 drainage easement - 2.84 AC

SPECIAL DRAINAGE EASEMENT NOTE:
THERE SHALL BE NO FILL IN DRAINAGE EASEMENT AREAS

UTILITY EASEMENT DETAIL:
Diagram showing utility easement width and location.

BUILDING SET BACKS:
FRONT: 30 FEET
SIDE: 15 FEET
REAR: 15 FEET

BUILDING PERMIT NOTE:
NO STRUCTURE SHALL BE LOCATED WITHIN SWALES, DRAINAGE FEATURES...
NO STRUCTURE SHALL BE LOCATED WITHIN SWALES, DRAINAGE FEATURES...

SPECIAL NOTE:
WATER RUN-OFF FROM COUNTY ROAD NO. 348 MAY OCCUR DURING HEAVY RAINS.

NOTICE AND WARNING TO PROSPECTIVE PURCHASERS OF LOTS IN JACKSON HEIGHTS:
THERE ARE LOTS IN THE SUBDIVISION WHICH ARE IN CLOSE PROXIMITY TO VARIOUS AGRICULTURAL OPERATIONS...

Table with columns: Curve, Chain, Station, Area, Total. Contains curve data for the subdivision.

ADOPTION AND DEDICATION:
KNOW ALL MEN BY THESE PRESENTS THAT I, JAMES CRIPPS, AS OWNER, HAVE CAUSED THE LINES HEREON DESCRIBED TO BE SURVEYED AND PLAT...

STATE OF FLORIDA, COUNTY OF SUWANNEE

HEREBY CERTIFY ON THIS 9th DAY OF JUNE, A.D. 2006, BEFORE ME PERSONALLY APPEARED...

WITNESS MY HAND AND SEAL AT LAKE CITY, FLORIDA, STATE OF FLORIDA, THIS 9th DAY OF JUNE, A.D. 2006.

DEDICATION OF MORTGAGEE:
THIS IS TO CERTIFY THAT SUWANNEE COUNTY HAS RECEIVED TITLE TO THE LAND DESCRIBED IN THE DEED...

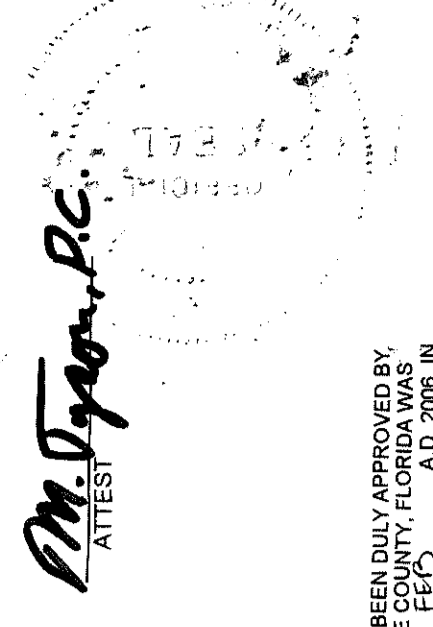
STATE OF FLORIDA, COUNTY OF COLUMBIA

HEREBY CERTIFY ON THIS 9th DAY OF JUNE, A.D. 2006, BEFORE ME PERSONALLY APPEARED...

WITNESS MY HAND AND SEAL AT LAKE CITY, FLORIDA, STATE OF FLORIDA, THIS 9th DAY OF JUNE, A.D. 2006.

APPROVED BY BOARD OF COUNTY COMMISSIONERS, SUWANNEE COUNTY, FLORIDA.

CERTIFICATE OF CLERK:
HEREBY CERTIFY THAT THE FOREGOING PLAT, HAVING BEEN DULY APPROVED BY THE BOARD OF COUNTY COMMISSIONERS...



NOTARY PUBLIC, STATE OF FLORIDA
MY COMMISSION EXPIRES: 2-23-06

NOTARY PUBLIC, STATE OF FLORIDA
MY COMMISSION EXPIRES: JUNE 20, 2007

APPROVED BY BOARD OF COUNTY COMMISSIONERS, SUWANNEE COUNTY, FLORIDA.

CERTIFICATE OF CLERK:
HEREBY CERTIFY THAT THE FOREGOING PLAT, HAVING BEEN DULY APPROVED BY THE BOARD OF COUNTY COMMISSIONERS...

NOT VALID WITHOUT THE SIGNATURE AND THE ORIGINAL RAISED SEAL OF A FLORIDA LICENSED SURVEYOR AND MAPPER.

DATE SURVEYED: 02-19-05
DATE DRAWN: 05-26-06

J. SHERMAN FRIER & ASSOCIATES, INC.
REGISTERED SURVEYOR AND MAPPER
130 WEST HOWARD STREET, F.O. BOX 880, LAKE OAK, FLORIDA 32864