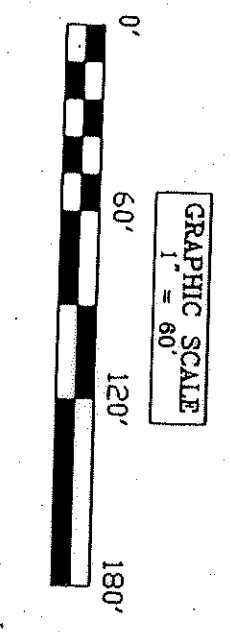


UTILITY EASEMENT DETAIL

DENOTES THE LOCATION OF UTILITY EASEMENTS FOR GROUND WATER MAINTENANCE AND OPERATION OF CABLE TELEVISION SERVICES.



OWNER: TSS DEVELOPMENT, LLC (UNPLATTED)

OWNER: TSS DEVELOPMENT, LLC (UNPLATTED)

OWNER: TSS DEVELOPMENT, LLC (UNPLATTED)

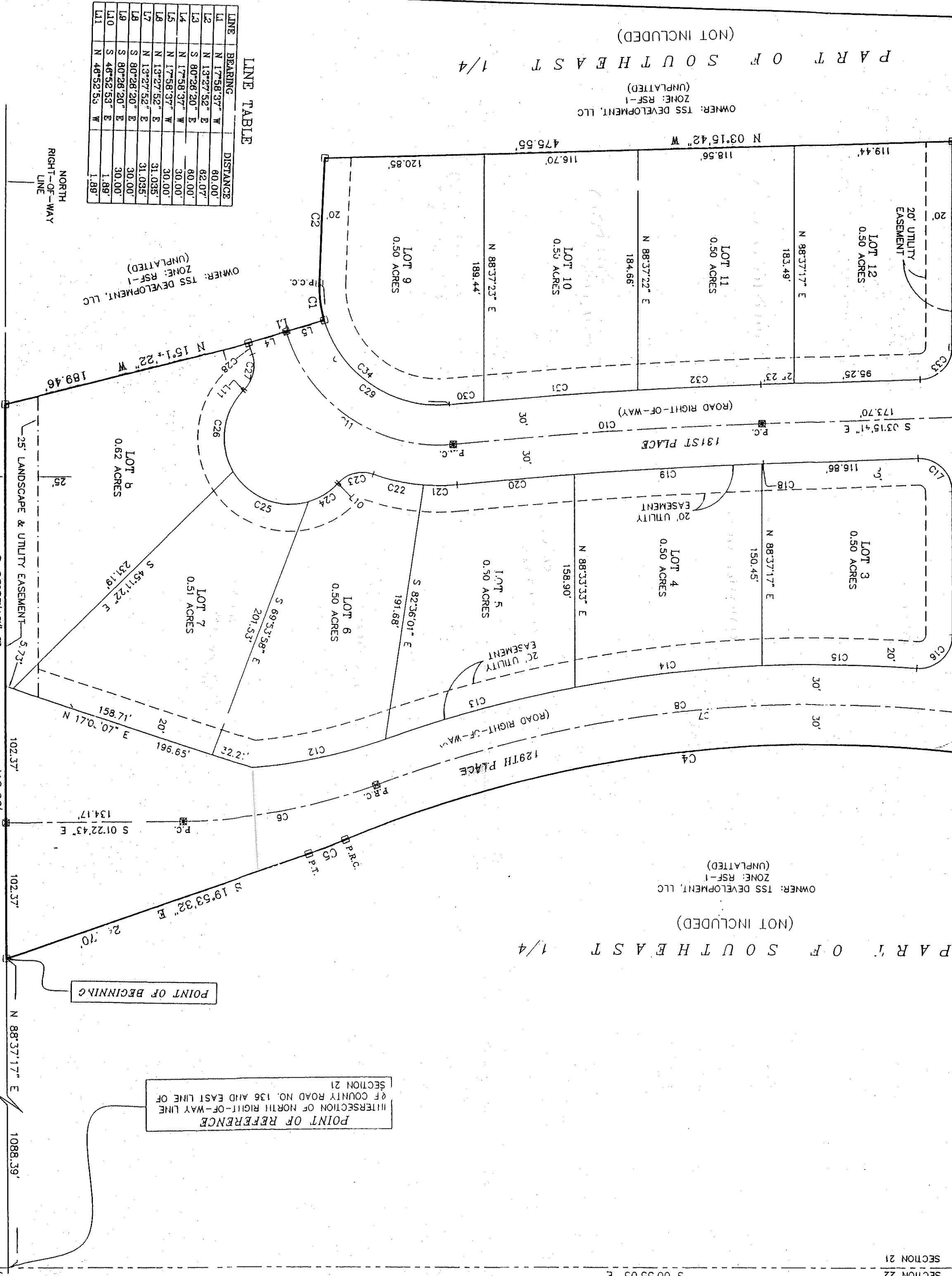
OWNER: TSS DEVELOPMENT, LLC (UNPLATTED)

OWNER: TSS DEVELOPMENT, LLC (UNPLATTED)

OWNER: TSS DEVELOPMENT, LLC (UNPLATTED)

PART OF SOUTH EAST 1/4 (NOT INCLUDED)

PART OF SOUTH EAST 1/4 (NOT INCLUDED)

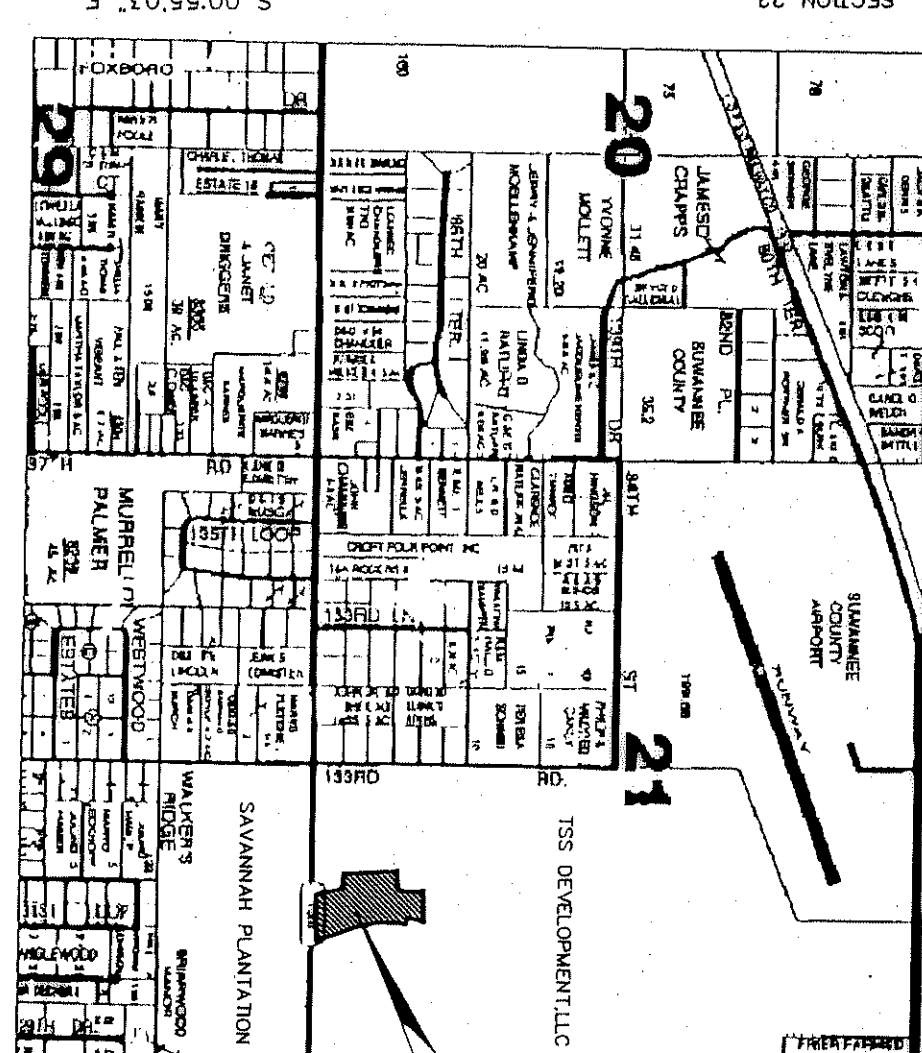


LINE TABLE

Table with 5 columns: LINE NUMBER, BEARING, DISTANCE, and POINTS.

CURVE TABLE with columns: CURVE DATA, ANGLE, BEARING, CHORD BEARING, CHORD LENGTH.

VICINITY MAP



PLANNED RESIDENTIAL DEVELOPMENT ARMSTRONG ESTATES, UNIT I AT SUWANNEE LANDING

SECTION 21 IN TOWNSHIP 02 SOUTH, RANGE 13 EAST SUWANNEE COUNTY, FLORIDA

DESCRIPTION: PART OF THE SOUTHEAST 1/4 OF SECTION 21, TOWNSHIP 02 SOUTH, RANGE 13 EAST SUWANNEE COUNTY, FLORIDA, BEING MORE PARTICULARLY DESCRIBED AS FOLLOWS: FOR POINT OF REFERENCE COMMENCE AT THE INTERSECTION OF THE EAST LINE OF SAID SECTION 21 AND THE SOUTH LINE OF SAID SECTION 21, THENCE RUN SOUTH 88°37'17" WEST ALONG THE NORTH RIGHT-OF-WAY LINE OF SAID SECTION 21, A DISTANCE OF 413.80 FEET TO A POINT OF BEGINNING...

STATEMENT OF OBJECTIVES: THE DEVELOPMENT CONTAINS APPROXIMATELY 8.81 ACRES LOCATED ON COUNTY ROAD 1404D, SECTION 21, TOWNSHIP 02 SOUTH, RANGE 13 EAST SUWANNEE COUNTY, FLORIDA.

RESIDENTIAL ZONING: RESIDENTIAL SINGLE FAMILY WITH ONE RESIDENCY PER LOT.

STATEMENT OF OBJECTIVES: THE DEVELOPMENT CONTAINS APPROXIMATELY 8.81 ACRES LOCATED ON COUNTY ROAD 1404D, SECTION 21, TOWNSHIP 02 SOUTH, RANGE 13 EAST SUWANNEE COUNTY, FLORIDA.

ADOPTION AND DEDICATION: I HEREBY CERTIFY THAT THE FOREGOING PLAT HAVING BEEN DULY APPROVED BY THE BOARD OF COUNTY COMMISSIONERS, SUWANNEE COUNTY, FLORIDA...

APPROVED BY BOARD OF COUNTY COMMISSIONERS, SUWANNEE COUNTY, FLORIDA. [Signatures]

CERTIFICATE OF CLERK: I HEREBY CERTIFY THAT THE FOREGOING PLAT HAVING BEEN DULY APPROVED BY THE BOARD OF COUNTY COMMISSIONERS, SUWANNEE COUNTY, FLORIDA...

CERTIFICATE OF SUBDIVIDER'S ENGINEER: THIS IS TO CERTIFY THAT THE SUBDIVIDER'S ENGINEER HAS REVIEWED THE PLAT AND FINDS IT ACCORDS TO THE REQUIREMENTS OF CHAPTER 177, FLORIDA STATUTES...

TASLAMENT AREAS NOTE: EXEMPT AREAS SHALL MEAN ALL REAL PROPERTY, RIGHTS OF WAY, TANKWAYS, INCLUDING ASSESSOR'S LOTS, WHICH HAVE BEEN OR WILL BE LATER DEDICATED TO THE USE OF WHICH HAS BEEN OR WILL BE LATER DEDICATED TO THE USE...

LAND USE: TOTAL LOT ACREAGE (RESIDENTIAL) - 8.81 ± TOTAL ROAD RIGHT-OF-WAY ACREAGE - 2.63 ± TOTAL ACREAGE - 9.81 ±

LEGEND AND NOTES: DENOTES P.I.A. (PERMANENT REFERENCE POINT) SET 4"X4"X24" CONCRETE MONUMENT STAMPED L.B.# 7170.

THOMAS B. ALBERT REGISTERED LAND SURVEYOR

THOMAS B. ALBERT REGISTERED LAND SURVEYOR

THOMAS B. ALBERT REGISTERED LAND SURVEYOR

THOMAS B. ALBERT REGISTERED LAND SURVEYOR

THOMAS B. ALBERT REGISTERED LAND SURVEYOR

THOMAS B. ALBERT REGISTERED LAND SURVEYOR

SHERMAN FRIER & ASSOCIATES, INC. REGISTERED SURVEYOR AND MAPPER

REGISTERED SURVEYOR AND MAPPER